

# Automotive Technology

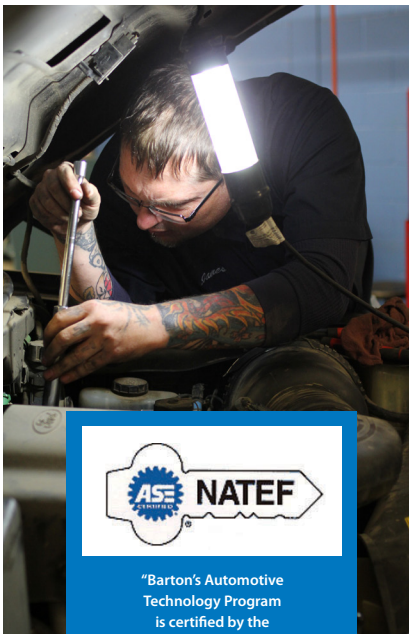
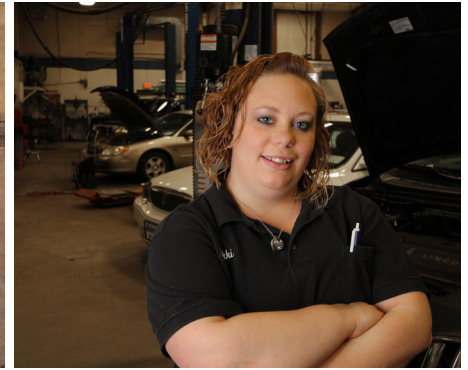
auto.bartonccc.edu

What drives you?  
**BARTON**  
COMMUNITY COLLEGE

For more information, contact:

**Ron Kirmer**

Instructor & Coordinator - Automotive  
kirmerr@bartonccc.edu  
(620) 792-9336



## Why Barton?

- State of the art facilities and training equipment:
  - o Computerized test equipment, high performance chassis dynamometer.
  - o Electrical training stations to facilitate hands-on learning.
- Instruction:
  - o Industry trained ASE Master Certified instructors.
  - o ASE student certificate available.
  - o Hands-on instruction in a "live-shop" environment.
  - o Interactive e-learning components.
  - o Certificate and Associate Degree options.
- Features of Coursework:
  - o NATEF certified courses: brakes, steering/suspension, electrical, engine performance, air conditioning, engines, manual drivetrains and automatic transmissions.
  - o Hybrid training.
  - o Auto Body elective course.
- Student support:
  - o Scholarships available for tools and tuition.
  - o Low interest student loans and Pell Grants.

## Occupational Outlook:

Automotive service careers opportunities are in high demand; projected to grow faster than average for all occupations over the next decade. Many skilled technicians are expected to retire in the next decade, creating many job opportunities.

- Auto Technicians can expect to earn \$37,680 annually and \$18.12 hourly.
- Auto Parts Specialists can expect to earn \$21,410 annually and \$10.29 hourly.

Source: US Bureau of Labor Statistics

## Job Possibilities:

- Salesman, Service Manager, Service Advisor, Parts Manager, General Manager, Pit Crew, Factory Representative Product Tester

**Non-discrimination Notice:** Barton Community College is an equal opportunity provider and employer. Visit [equal.bartonccc.edu](http://equal.bartonccc.edu) for more information.



"Barton's Automotive Technology Program is certified by the National Automotive Technicians Education Foundation (NATEF)"