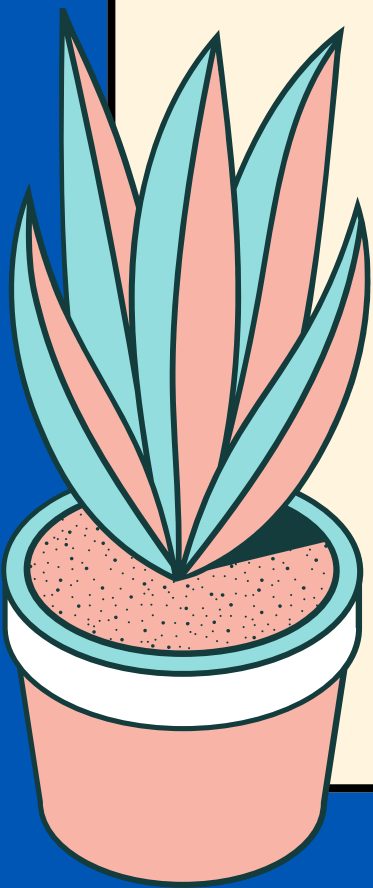


NOTICE

DEAR COUGARS!

**LSEC Cycle 5 official
schedule will be released
on April 24, 2024**

See below for our previous
cycle 5 as reference 📇



Barton Community College - Fort Riley Campus

LSEC (6 Week Day Classes) • Cycle 5
Monday, June 12 - Tuesday, July 25, 2023

Building 206 Custer Ave

Room 114	Course	Instructor	Materials	In-Person CRN	Live- Online
0900-1030 Hybrid	LANG 1908 Elementary Spanish I (5 CR)	Oviedo	Textbook Workbook	30583	30584

Building 211 Custer Ave

Room 113	Course	Instructor	Materials	In-Person CRN	Live- Online
0900-1030	BSTC 1036 Computer Concepts & Applications	Klinger	Textbook	30585	30588

LiveOnline

Via Zoom	Course	Instructor	Materials	LiveOnline CRN
1030-1200	ARTS 1203 Art History Survey II	Hanson, A.		30589
0900-1030	BUSI 1803 Principles of Management	Fullen		30590
0900-1200 Mon/Wed Hybrid	CHEM 1806 College Chemistry I (5 CR) • PREREQUISITE	Bradford-Clark	Lab Kit	30421
1330-1630 Mon/Wed Hybrid	CHEM 1814 Organic Chemistry I (5 CR) • PREREQUISITE	Bradford-Clark	Lab Kit	30591
1030-1200	COMM 1230 Public Speaking	Fullen		30422
1200-1330 Mon/Wed/Fri Hybrid	CRIM 1623 Criminal Profiling	Peoples-Howard		30592
0900-1030	ENGL 1204 English Composition I • PREREQUISITE	Hardwick		30593
1330-1500 Mon/Wed/Fri Hybrid	ENGL 1206 English Composition II • PREREQUISITE	Richards		30594
0900-1030	HIST 1408 Western Civilization to 1500	Hanson, A.		30596
1330-1630 Tues/Thurs Hybrid	LIFE 1402 Principles of Biology (5 CR) *Must attend Monday, June 12th and then Tues/Thur only	Cates		30430
1400-1630 Tues/Thurs Hybrid	LIFE 1409 Anatomy & Physiology II (4 CR) • PREREQUISITE *Must attend Monday, June 12th and then Tues/Thur only	Ravitskiy		30431
1400-1700 Mon/Wed Hybrid	LIFE 1412 Principles of Microbiology (5 CR)	Ravitskiy		30432
0900-1030	MATH 1821 Basic Algebra • PREREQUISITE	Kolembe	Calculator (Optional)	30595
1030-1200	MATH 1824 Intermediate Algebra • PREREQUISITE	Kolembe	Calculator (Optional)	30597
1200-1330	MATH 1828 College Algebra • PREREQUISITE	Kolembe	Calculator (Optional)	30598
1030-1200	MUSI 1015 Fundamentals of Music	Hooser		30599
0900-1030	MUSI 1095 History of Rock & Roll	Hooser		30433
1330-1500 Mon/Wed/Fri Hybrid	POLS 1801 Introduction to Political Science	Bergantz		30600
1200-1330	PSYC 1000 General Psychology	Campbell		30603
0900-1030	PSYC 1027 Coping with Stress	Campbell		30435
0900-1030	PSYC 1033 Psychology of Serial Killers	Ingala		30601
1030-1200	PSYC 1130 Death & Dying	Campbell		30602
1030-1200 Mon/Wed/Fri Hybrid	RELI 1311 World Religions	Harders		30604
1200-1330	SOCI 1100 Introduction to Sociology	Ingala		30605
1030-1200	SOCI 1102 Marriage & Family	Ingala		30606

Attendance is mandatory on the first day of the cycle.

All information is subject to change without notice.

Non-discrimination Notice: Barton Community College is an equal opportunity provider and employer. Visit equal.bartonccc.edu for more information.

LSEC

About LSEC

For detailed information regarding our LSEC classes, please visit our webpage at LSEC.bartonccc.edu to learn more. Or scan the QR code below with your phone:



Important Dates

Enrollment Begins

April 27, 2023

Last Day to Enroll

June 8, 2023

Non-Activity Drops

June 20, 2023

Last Day to Drop

June 20, 2023

Last Day to Withdraw

July 5, 2023

Holidays

June 19, 2023

July 3-4, 2023

Materials Pick-Up

Starting June 8, 2023 - you may pick up your Course Materials from the Barton Office, 211 Custer Ave, Room 211.

Materials Returns

If not returned by July 26, 2023 charges will be applied to your account.

LSEC 6 Schedule Release

June 20, 2023

On-Duty Enrollment Requests

Active Duty Soldiers are required to complete an On-Duty Enrollment Request with the Education Center in order to attend the LSEC classes. These forms must be signed by the soldiers' Commander.

By Close of Business June 8, SOLDIERS MUST:

- Return signed forms to the Education Center
- Be enrolled with Barton

Per DOD policy, the use of Zoom on a Government PC and/or Network is not authorized.

Prerequisites

Prerequisite course information can be found at <https://bartonccc.edu/enrollment/classes>. For questions, call us at 785-784-6606 and ask to speak to an advisor.



Find us on Facebook

facebook.com/bartonfr

Visit our Website

FR.bartonccc.edu

Contact Us

Phone: (785) 784-6606

Email: FortRiley@bartonccc.edu