



## *HLC Accreditation Evidence*

Title: Graduation Survey Results

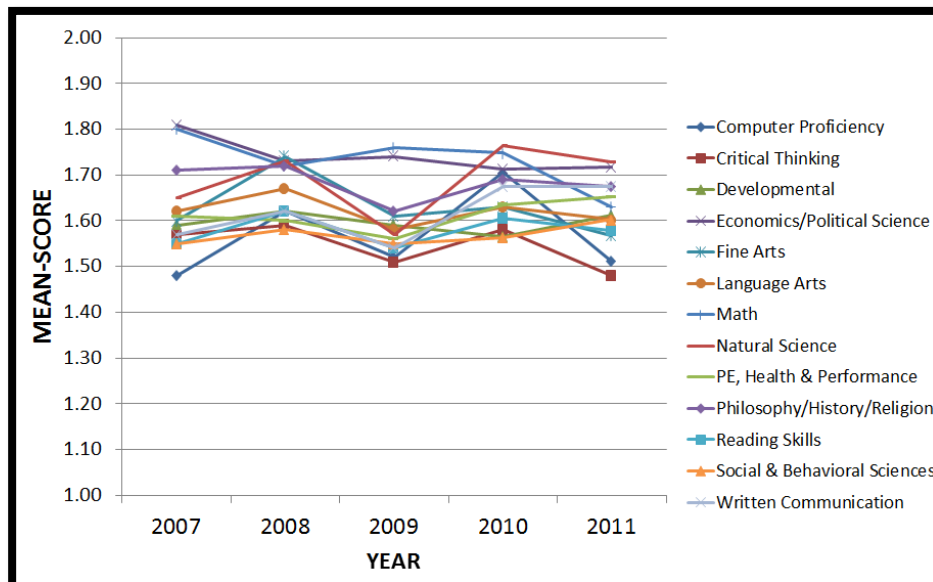
Office of Origin: President - Institutional Research

## GRADUATION SURVEY RESULTS

The graduation survey questions students about their academic preparation at Barton, focusing on general education coursework completed as part of an associates' degree. This gives Barton an indirect measure of the general education outcomes as part of degree level assessment tied to a Board of Trustee (BOT) ENDS statement.

Graduates are asked to rate how well they felt their Barton coursework had prepared them for the future using a five-point interval scale with scores ranging from "Very Well Prepared" (1) to "Poorly Prepared" (5). The respondents were asked to rate their preparedness in the listed areas. The results given are then the mean score response for each category as listed above by year.

Category	Year				
	2007	2008	2009	2010	2011
Natural Science	1.65	1.73	1.57	1.77	1.73
Economics/Political Science	1.81	1.73	1.74	1.71	1.72
Philosophy/History/Religion	1.71	1.72	1.62	1.69	1.68
Written Communication	1.57	1.62	1.54	1.68	1.68
PE, Health & Performance	1.61	1.60	1.56	1.64	1.65
Math	1.80	1.72	1.76	1.75	1.63
Developmental	1.59	1.62	1.59	1.57	1.61
Language Arts	1.62	1.67	1.58	1.63	1.60
Social & Behavioral Sciences	1.55	1.58	1.55	1.56	1.60
Reading Skills	1.55	1.62	1.54	1.61	1.58
Fine Arts	1.60	1.74	1.61	1.63	1.57
Computer Proficiency	1.48	1.62	1.52	1.71	1.51
Critical Thinking	1.57	1.59	1.51	1.58	1.48



**Comparisons of Spring 2007 and Spring 2008 Graduation Survey**

Coursework	Associate of Arts			Associate of Science			Associate of Applied Science			Associate of General Studies			Overall		
	Mean			Mean			Mean			Mean			Mean		
	SP 07	SP 08	Diff.	SP 07	SP 08	Diff.	SP 07	SP 08	Diff.	SP 07	SP 08	Diff.	SP 07	SP 08	Diff.
Written Communication	1.67	1.66	0.01	1.51	1.66	-0.15	1.64	1.74	-0.1	1.53	1.41	0.12	1.57	1.62	-0.05
Language Arts	1.69	1.6	0.09	1.59	1.7	-0.11	1.58	1.77	-0.19	1.69	1.52	0.17	1.62	1.67	-0.05
Math	1.97	1.78	0.19	1.74	1.68	0.06	1.7	1.89	-0.19	1.88	1.58	0.3	1.8	1.72	0.08
Social & Behavioral Sciences	1.53	1.57	-0.04	1.49	1.59	-0.1	1.63	1.7	-0.07	1.73	1.47	0.26	1.55	1.58	-0.03
Natural Science	1.86	1.95	-0.09	1.54	1.7	-0.16	1.8	1.75	0.05	1.67	1.61	0.06	1.65	1.73	-0.08
Fine Arts	1.78	1.62	0.16	1.51	1.75	-0.24	1.5	1.78	-0.28	1.67	1.77	-0.1	1.6	1.74	-0.14
Philosophy/History/Religion	1.94	1.73	0.21	1.63	1.69	-0.06	1.57	1.85	-0.28	1.71	1.7	0.01	1.71	1.72	-0.01
Economics/Political Science	1.95	2	-0.05	1.78	1.66	0.12	1.79	1.86	-0.07	1.77	1.62	0.15	1.81	1.73	0.08
Developmental	1.81	1.6	0.21	1.46	1.69	-0.23	1.74	1.59	0.15	1.62	1.5	0.12	1.59	1.62	-0.03
PE, Health & Performance	1.84	1.68	0.16	1.44	1.57	-0.13	1.76	1.65	0.11	1.85	1.55	0.3	1.61	1.6	0.01
Reading Skills	1.54	1.6	-0.06	1.55	1.62	-0.07	1.54	1.71	-0.17	1.6	1.52	0.08	1.55	1.62	-0.07
Computer Proficiency	1.75	1.64	0.11	1.38	1.62	-0.24	1.5	1.7	-0.2	1.5	1.51	-0.01	1.48	1.62	-0.14
Critical Thinking	1.81	1.63	0.18	1.47	1.62	-0.15	1.52	1.66	-0.14	1.69	1.43	0.26	1.57	1.59	-0.02

**Comparisons of Spring 2008 and Spring 2009 Graduation Survey**

Coursework	Associate of Arts			Associate of Science			Associate of Applied Science			Associate of General Studies			Overall		
	Mean			Mean			Mean			Mean			Mean		
	SP 08	SP 09	Diff.	SP 08	SP 09	Diff.	SP 08	SP 09	Diff.	SP 08	SP 09	Diff.	SP 08	SP 09	Diff.
Written Communication	1.66	1.45	0.21	1.66	1.55	0.11	1.74	1.66	0.08	1.41	1.51	-0.1	1.62	1.54	0.08
Language Arts	1.6	1.44	0.16	1.7	1.54	0.16	1.77	1.67	0.1	1.52	1.7	-0.18	1.67	1.58	0.09
Math	1.78	1.78	0	1.68	1.69	-0.01	1.89	1.74	0.15	1.58	1.89	-0.31	1.72	1.76	-0.04
Social & Behavioral Sciences	1.57	1.56	0.01	1.59	1.5	0.09	1.7	1.64	0.06	1.47	1.56	-0.09	1.58	1.55	0.03
Natural Science	1.95	1.56	0.39	1.7	1.52	0.18	1.75	1.55	0.2	1.61	1.7	-0.09	1.73	1.57	0.16
Fine Arts	1.62	1.4	0.22	1.75	1.61	0.14	1.78	1.94	-0.16	1.77	1.63	0.14	1.74	1.61	0.13
Philosophy/History/Religion	1.73	1.46	0.27	1.69	1.61	0.08	1.85	1.88	-0.03	1.7	1.64	0.06	1.72	1.62	0.1
Economics/Political Science	2	1.5	0.5	1.66	1.81	-0.15	1.86	1.76	0.1	1.62	1.78	-0.16	1.73	1.74	-0.01
Developmental	1.6	1.6	0	1.69	1.54	0.15	1.59	1.61	-0.02	1.5	1.67	-0.17	1.62	1.59	0.03
PE, Health & Performance	1.68	1.4	0.28	1.57	1.54	0.03	1.65	1.87	-0.22	1.55	1.52	0.03	1.6	1.56	0.04
Reading Skills	1.6	1.52	0.08	1.62	1.54	0.08	1.71	1.57	0.14	1.52	1.55	-0.03	1.62	1.54	0.08
Computer Proficiency	1.64	1.49	0.15	1.62	1.51	0.11	1.7	1.46	0.24	1.51	1.62	-0.11	1.62	1.52	0.1
Critical Thinking	1.63	1.44	0.19	1.62	1.52	0.1	1.66	1.65	0.01	1.43	1.43	0	1.59	1.51	0.08

**Comparisons of Spring 2009 and Spring 2010 Graduation Survey**

Coursework	Associate of Arts			Associate of Science			Associate of Applied Science			Associate of General Studies			Overall		
	Mean			Mean			Mean			Mean			Mean		
	SP 09	SP 10	Diff.	SP 09	SP 10	Diff.	SP 09	SP 10	Diff.	SP 09	SP 10	Diff.	SP 09	SP 10	Diff.
Written Communication	1.45	1.79	-0.34	1.55	1.67	-0.12	1.66	1.89	-0.23	1.51	1.35	0.16	1.54	1.68	-0.14
Language Arts	1.44	1.67	-0.23	1.54	1.59	-0.05	1.67	1.95	-0.28	1.7	1.31	0.39	1.58	1.63	-0.05
Math	1.78	1.81	-0.03	1.69	1.69	0	1.74	1.92	-0.18	1.89	1.57	0.32	1.76	1.75	0.01
Social & Behavioral Sciences	1.56	1.49	0.07	1.5	1.52	-0.02	1.64	1.93	-0.29	1.56	1.31	0.25	1.55	1.56	-0.01
Natural Science	1.56	1.87	-0.31	1.52	1.63	-0.11	1.55	2	-0.45	1.7	1.56	0.14	1.57	1.77	-0.20
Fine Arts	1.4	1.41	-0.01	1.61	1.58	0.03	1.94	2.06	-0.12	1.63	1.47	0.16	1.61	1.63	-0.02
Philosophy/History/Religion	1.46	1.6	-0.14	1.61	1.75	-0.14	1.88	2.07	-0.19	1.64	1.34	0.3	1.62	1.69	-0.07
Economics/Political Science	1.5	2	-0.5	1.81	1.72	0.09	1.76	1.78	-0.02	1.78	1.35	0.43	1.74	1.71	0.03
Developmental	1.6	1.61	-0.01	1.54	1.58	-0.04	1.61	1.73	-0.12	1.67	1.34	0.33	1.59	1.57	0.03
PE, Health & Performance	1.4	1.6	-0.2	1.54	1.6	-0.06	1.87	2.02	-0.15	1.52	1.32	0.2	1.56	1.64	-0.08
Reading Skills	1.52	1.68	-0.16	1.54	1.59	-0.05	1.57	1.84	-0.27	1.55	1.31	0.24	1.54	1.61	-0.06
Computer Proficiency	1.49	1.89	-0.4	1.51	1.68	-0.17	1.46	1.84	-0.38	1.62	1.41	0.21	1.52	1.71	-0.19
Critical Thinking	1.44	1.61	-0.17	1.52	1.6	-0.08	1.65	1.7	-0.05	1.43	1.41	0.02	1.51	1.58	-0.07

**Comparisons of Spring 2010 and Spring 2011 Graduation Survey**

Coursework	Associate of Arts			Associate of Science			Associate of Applied Science			Associate of General Studies			Overall		
	Mean			Mean			Mean			Mean			Mean		
	SP 10	SP 11	Diff.	SP 10	SP 11	Diff.	SP 10	SP 11	Diff.	SP 10	SP 11	Diff.	SP 10	SP 11	Diff.
Written Communication	1.79	1.81	-0.02	1.67	1.61	0.06	1.89	1.73	0.16	1.35	1.55	-0.2	1.68	1.68	0.00
Language Arts	1.67	1.71	-0.04	1.59	1.59	0	1.95	1.7	0.25	1.31	1.41	-0.1	1.63	1.60	0.03
Math	1.81	1.57	0.24	1.69	1.62	0.07	1.92	1.81	0.11	1.57	1.52	0.05	1.75	1.63	0.12
Social & Behavioral Sciences	1.49	1.64	-0.15	1.52	1.49	0.03	1.93	1.75	0.18	1.31	1.53	-0.22	1.56	1.60	-0.04
Natural Science	1.87	1.85	0.02	1.63	1.66	-0.03	2	1.73	0.27	1.56	1.67	-0.11	1.77	1.73	0.04
Fine Arts	1.41	1.48	-0.07	1.58	1.67	-0.09	2.06	1.62	0.44	1.47	1.5	-0.03	1.63	1.57	0.06
Philosophy/History/Religion	1.6	1.67	-0.07	1.75	1.65	0.1	2.07	1.81	0.26	1.34	1.57	-0.23	1.69	1.68	0.01
Economics/Political Science	2	1.55	0.45	1.72	1.78	-0.06	1.78	1.83	-0.05	1.35	1.71	-0.36	1.71	1.72	-0.01
Developmental	1.61	1.55	0.06	1.58	1.57	0.01	1.73	1.71	0.02	1.34	1.62	-0.28	1.57	1.61	-0.04
PE, Health & Performance	1.6	1.53	0.07	1.6	1.59	0.01	2.02	1.82	0.2	1.32	1.67	-0.35	1.64	1.65	-0.01
Reading Skills	1.68	1.49	0.19	1.59	1.59	0	1.84	1.82	0.02	1.31	1.41	-0.1	1.61	1.58	0.03
Computer Proficiency	1.89	1.46	0.43	1.68	1.51	0.17	1.84	1.69	0.15	1.41	1.39	0.02	1.71	1.51	0.20
Critical Thinking	1.61	1.43	0.18	1.6	1.5	0.1	1.7	1.63	0.07	1.41	1.36	0.05	1.58	1.48	0.10

**Comparisons of Spring 2011 and Spring 2012 Graduation Survey**

Coursework	Associate of Arts			Associate of Science			Associate of Applied Science			Associate of General Studies			Overall		
	Mean			Mean			Mean			Mean			Mean		
	SP 11	SP 12	Diff.	SP 11	SP 12	Diff.	SP 11	SP 12	Diff.	SP 11	SP 12	Diff.	SP 11	SP 12	Diff.
Written Communication	1.81			1.61			1.73			1.55			1.68	1.74	-0.06
Language Arts	1.71			1.59			1.7			1.41			1.60	1.70	-0.10
Math	1.57			1.62			1.81			1.52			1.63	1.70	-0.07
Social & Behavioral Sciences	1.64			1.49			1.75			1.53			1.60	1.71	-0.11
Natural Science	1.85			1.66			1.73			1.67			1.73	1.92	-0.19
Fine Arts	1.48			1.67			1.62			1.5			1.57	1.70	-0.13
Philosophy/History/Religion	1.67			1.65			1.81			1.57			1.68	1.78	-0.11
Economics/Political Science	1.55			1.78			1.83			1.71			1.72	1.87	-0.15
Developmental	1.55			1.57			1.71			1.62			1.61	1.74	-0.13
PE, Health & Performance	1.53			1.59			1.82			1.67			1.65	1.82	-0.17
Reading Skills	1.49			1.59			1.82			1.41			1.58	1.66	-0.08
Computer Proficiency	1.46			1.51			1.69			1.39			1.51	1.65	-0.14
Critical Thinking	1.43			1.5			1.63			1.36			1.48	1.66	-0.18

**Comparisons of Spring 2012 and Spring 2013 Graduation Survey**

Coursework	Overall		
	Mean		
	SP 12	SP 13	Diff
Written Communication	1.74	1.62	0.12
Language Arts	1.70	1.68	0.02
Math	1.70	1.65	0.05
Social & Behavioral Sciences	1.71	1.52	0.19
Natural Science	1.92	1.64	0.28
Fine Arts	1.70	1.58	0.12
Philosophy/History/Religion	1.78	1.65	0.13
Economics/Political Science	1.87	1.72	0.15
Developmental	1.74	1.56	0.18
PE, Health & Performance	1.82	1.64	0.18
Reading Skills	1.66	1.59	0.07
Computer Proficiency	1.65	1.55	0.10
Critical Thinking	1.66	1.56	0.10

**Comparisons of Spring 2013 and Spring 2014 Graduation Survey**

Coursework	Overall		
	Mean		
	SP 13	SP 14	Diff
Written Communication	1.62	1.59	0.03
Language Arts	1.68	1.63	0.05
Math	1.65	1.58	0.07
Social & Behavioral Sciences	1.52	1.57	-0.05
Natural Science	1.64	1.66	-0.02
Fine Arts	1.58	1.60	-0.02
Philosophy/History/Religion	1.65	1.53	0.12
Economics/Political Science	1.72	1.58	0.14
Developmental	1.56	1.54	0.02
PE, Health & Performance	1.64	1.60	0.04
Reading Skills	1.59	1.55	0.04
Computer Proficiency	1.55	1.59	-0.04
Critical Thinking	1.56	1.50	0.06

**Comparisons of Spring 2014 and Spring 2015 Graduation Survey**

Coursework	Overall		
	Mean		
	SP 14	SP 15	Diff
Written Communication	1.59	1.60	-0.01
Language Arts	1.63	1.60	0.03
Math	1.58	1.61	-0.03
Social & Behavioral Sciences	1.57	1.48	0.09
Natural Science	1.66	1.72	-0.06
Fine Arts	1.60	1.61	-0.01
Philosophy/History/Religion	1.53	1.61	-0.08
Economics/Political Science	1.58	1.57	0.01
Developmental	1.54	1.57	-0.03
PE, Health & Performance	1.60	1.73	-0.13
Reading Skills	1.55	1.54	0.01
Computer Proficiency	1.59	1.51	0.08
Critical Thinking	1.50	1.49	0.01

**Comparisons of Spring 2015 and Spring 2017 Graduation Survey**

Coursework	Overall		
	Mean		Diff
	SP 15	SP 17	
Written Communication	1.60	3.43	-1.83
Language Arts	1.60	1.68	-0.08
Math	1.61	1.68	-0.07
Social & Behavioral Sciences	1.48	1.53	-0.05
Natural Science	1.72	1.60	0.12
Fine Arts	1.61	1.81	-0.20
Philosophy/History/Religion	1.61	1.75	-0.14
Economics/Political Science	1.57	1.76	-0.19
Developmental	1.57	1.71	-0.14
PE, Health & Performance	1.73	1.79	-0.06
Reading Skills	1.54	1.67	-0.13
Computer Proficiency	1.51	1.75	-0.24
Critical Thinking	1.49	1.61	-0.12

Note: 2016 Data lost due to error