



HLC Accreditation Evidence

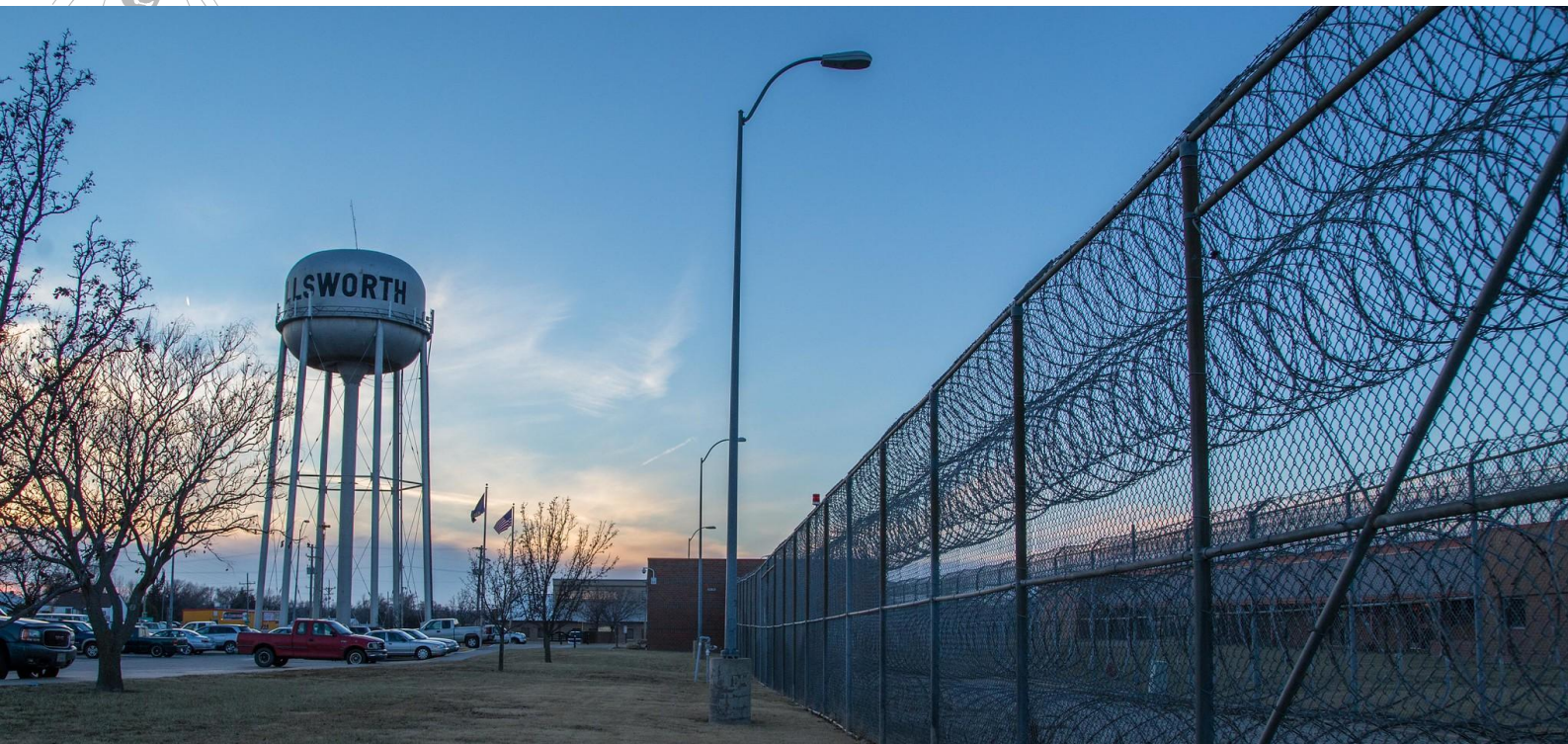
- Correctional Education
- URL: <https://www.bartonccc.edu/basics>

Office of Origin:

- Vice President of Instruction

Contact(s):

- Dean of Workforce Training and Community Education
- Executive Director of Healthcare and Public Service Education

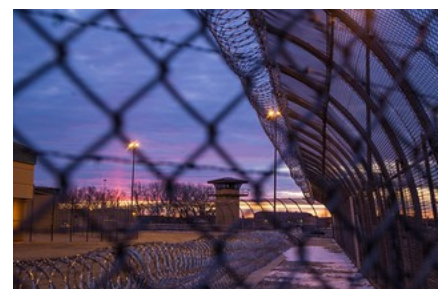


Correctional Education

What is the BASICS program?

Building Academic Skills in Correctional Settings

Barton Community College has been serving Ellsworth Correctional Facility (ECF) and Larned Correctional Mental Health Facility (LCMHF) since 2001 with educational programming. BASICS has transitioned into a one of the most successful correctional education programs in the nation. We are currently offering 8 career technical certificates, traditional post-secondary coursework, adult basic education, and advisement services for over 200 students a year.



Barton is doing our part to help the Kansas Department of Corrections create a safer Kansas! Read more about Barton's effort to [break the cycle of recidivism](#).

Mission and Vision

The Vision - Break the cycle of incarceration through effective correctional education.

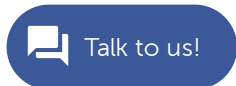
The Mission - Barton empowers offenders towards successful reintegration through education and career training.

Achievements

In Fiscal Year 2016, our Adult Basic Education program at ECF and LCMHF served over 118 students, and awarded 40 Kansas State High School Diplomas. In addition to offering traditional instruction, our adult education staff worked with our students on the completion of 49 WORKReady! Certificates.

During this same time frame, Barton provided career technical training to approximately 207 offenders and awarded 140 certificates in the following programs:

- Welding Technology – 16 credit hour certificate program – 36 Certificates
- Manufacturing Skills – 8 credit hour program – 27 Certificates
- Introductory Craft Skills – 3 credit hour course w/NCCER Core Certificate – 54 Certificates
- IC3 Digital Literacy Certificate – 6 credit hour program – 30 Certificates
- Microsoft Office Specialist courses – Courses are still in session.
- Carpentry – 18 credit hour certificate program – Courses are still in session.



In addition to adult basic education and career technical training, Barton serves students at ECF and LCMHF with traditional academic coursework. We serve approximately 50-70 students in courses ranging from Yoga to College Algebra.

Education has proven to be one of the best ways to reduce recidivism, save taxpayers money, and increase the safety and well-being of communities to which formerly incarcerated people return.

Celebrating Achievement

Barton is proud to offer our students the opportunity to celebrate their success, and take the time to reflect on their journey towards success.

Every year Barton and staff from the Kansas Department of Corrections gather in celebration of our students for their individual success in our adult education, career technical, or post-secondary programs.

Programs	+
Advisement	+
Scholarships	+
Contracts and Grants	+

BARTON

COMMUNITY COLLEGE

- [MyBarton Portal](#)
- [Privacy](#)
- [Employment](#)
- [Text Alert](#)
- [Notice of Non-discrimination](#)
- [Policies and Procedures](#)
- [Net Price Calculator](#)
- [Kansas DegreeStats](#)
- [Transparency](#)
- [Faculty and Staff](#)

- [Barton Home](#)
- [Barton Online](#)
- [Ft. Leavenworth Campus](#)
- [Ft. Riley Campus](#)
- [Grandview Plaza Campus](#)
- [Barton Safety Training](#)
- [Military Training](#)
- [Barton Foundation](#)



Barton Community College
245 NE 30 RD
Great Bend, KS 67530
(800) 748-7594 | (620) 792-2701

[Feedback](#) | [Contact](#)

