



*HLC Accreditation Evidence*

Barton County Community College Foundation

URL: <http://bartonccfoundation.org/>

Office of Origin: BCCC Foundation

Contact(s):

- Executive Director of Institutional Advancement



Make a  
Difference

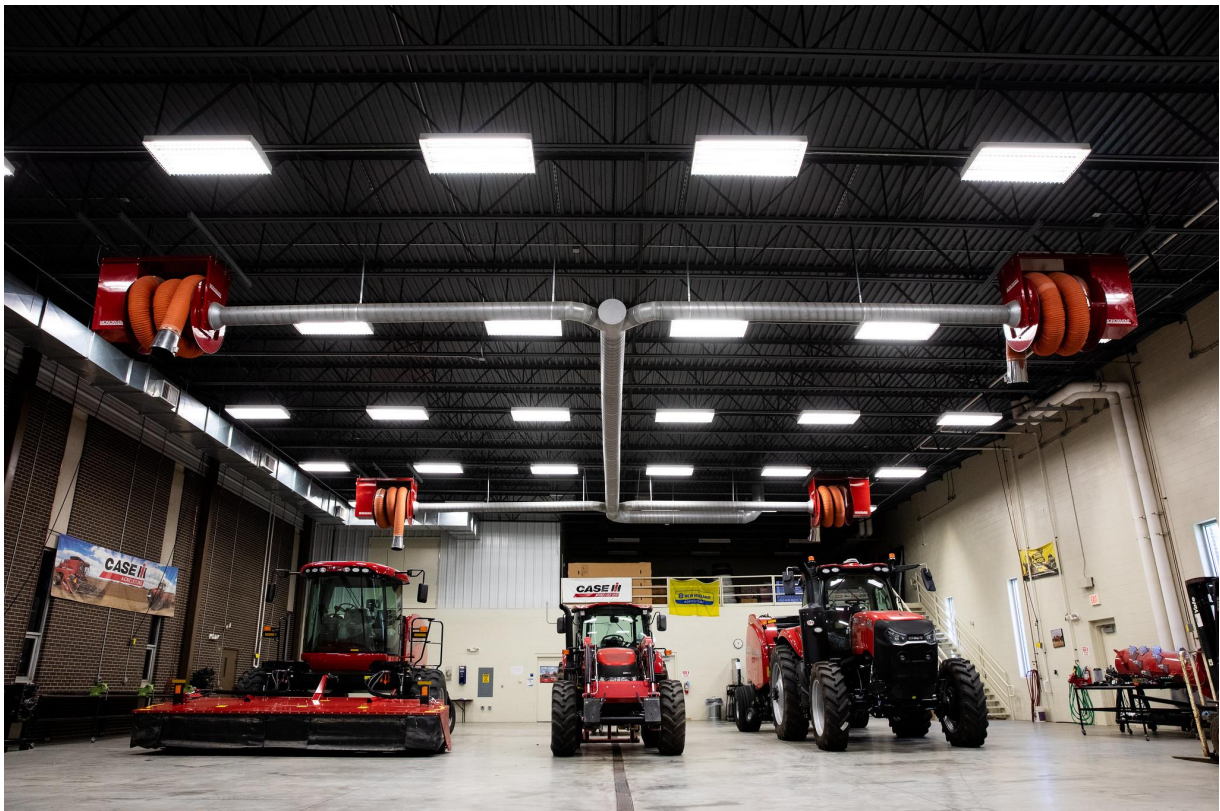


Ways to  
Give



Donate  
Today

### Tax Credit Opportunity



Barton has been awarded a 1:1 matching grant, totaling \$1,843,594, to construct an Agriculture, Farm Machinery, and Transportation Technology Complex to co-locate high-wage, high-demand programs including Agriculture Business Management, Crop Protection, Beef Cattle Production, and Commercial Driver's License (CDL), in addition to housing the anticipated Case New Holland (CNH) Top Tech Industrial Service Training program to train ag mechanic technicians to enter the workforce. If you are interested or know someone that might be - please call Lindsey for more information. Time is CRITICAL as they are going to be sold out very quickly!

Check out more information [about the grant](#), or [contact Lindsey!](#)

### Help Your Community

Enroll in Dillon's Community Rewards and link your Shopper's Card so every purchase you make provides funds for Barton. Plus, you'll earn fuel points at the same time.

**ENROLL TODAY**

### Update Your Info

Update your information to stay up-to-date on the latest Barton happenings! Contact us today to let us know how to keep in touch!

**EMAIL US**

