



HLC Accreditation Evidence

Taxpayer and Student Transparency Data

URL:

<https://www.bartonccc.edu/community/boardoftrustees/transparency>

Office of Origin: Vice President of Administration

Contact(s):

- Vice President of Administration



Taxpayer and Student Transparency Data

Barton Community College is committed to accountability and transparency for students, parents, faculty and staff, and taxpayers. The resources below are tangible examples of the college's and Board of Trustees' commitment to accountability and transparency.

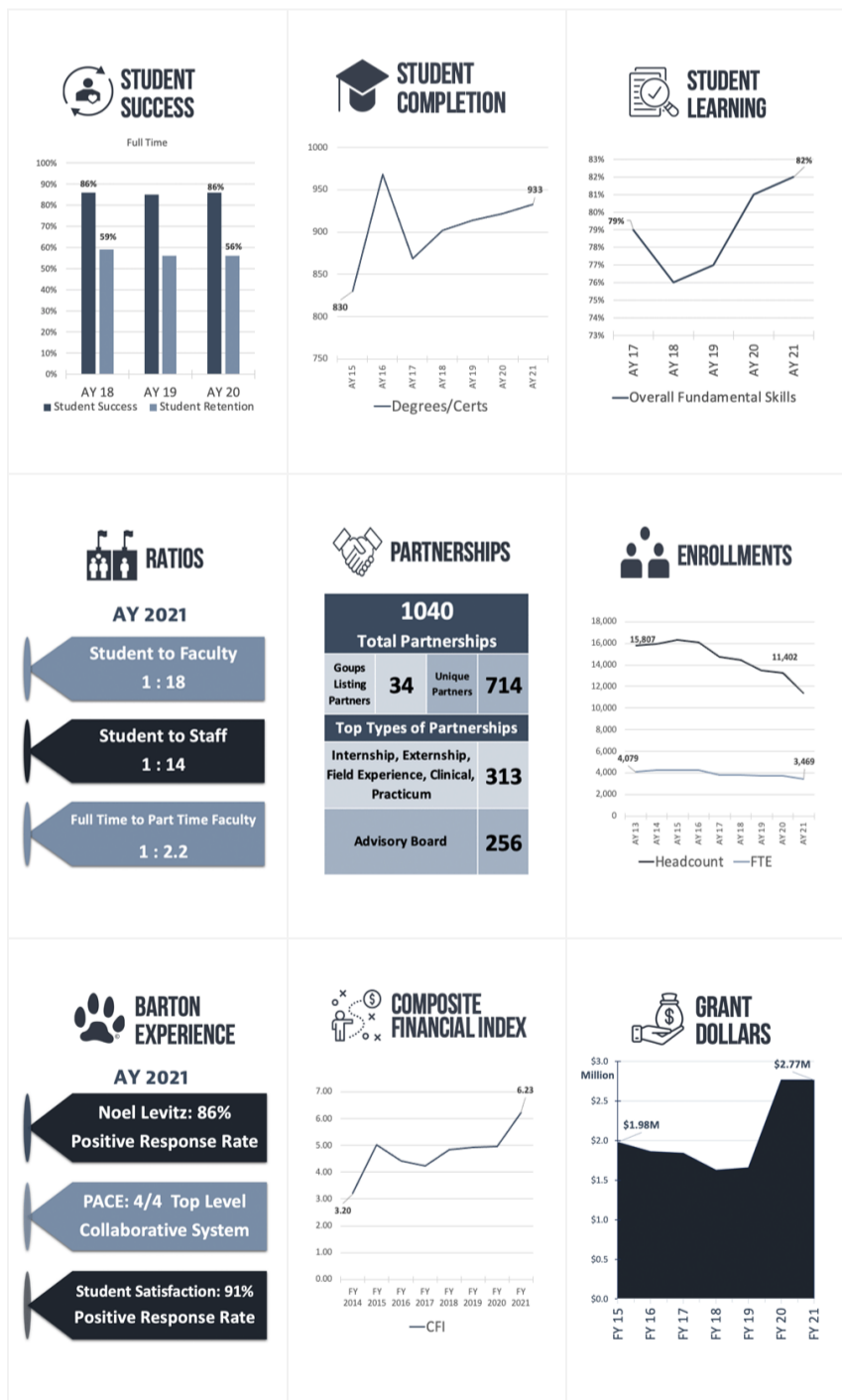
Questions? Please contact:

Amye Schneider
Clerk of the Board
(620) 792-9302
trustee@bartonccc.edu

- [Board of Trustees Meetings Schedule and Minutes](#)
- [Monthly Financial Reporting](#)
- [Yearly Financial Reporting](#)
- [Higher Education Emergency Relief Fund \(HEERF\)](#)
- [Board Governance Manual](#)
- [Purchase and Certificate of Participation - Long Term Debt Obligations](#)
- [Community Survey Results](#)
- [Seamless Systemwide Transfer](#)
- [Tuition Rates](#)
- [Fees Charged](#)
- [Cost of Attendance](#)
- [Student Data Overview](#)
- [Student Detailed Data by Residency](#)
- [KBOR Credential Finder](#)
- [Kansas House Bill 2144 - Community College Transparency](#)

Visit the [KPI Metrics Dashboard](#) to view interactive charts with information on the following categories:

KPI Dashboard - Click for more details



The information above may also be obtained in other formats by contacting the [Office of the President](#).

Property Tax Revenues

2007 - Mill Levy: 33.498; Valuation: 213,302,770; Tax: 7,145,216
2008 - Mill Levy: 32.604; Valuation: 241,997,749; Tax: 7,890,095
2009 - Mill Levy: 32.659; Valuation: 228,550,721; Tax: 7,464,238
2010 - Mill Levy: 32.807; Valuation: 242,343,325; Tax: 7,950,557
2011 - Mill Levy: 32.771; Valuation: 257,270,901; Tax: 8,430,945
2012 - Mill Levy: 32.713; Valuation: 268,729,682; Tax: 8,814,162
2013 - Mill Levy: 32.798; Valuation: 272,753,179; Tax: 8,960,752
2014 - Mill Levy: 33.124; Valuation: 270,067,190; Tax: 8,959,263
2015 - Mill Levy: 33.090; Valuation: 243,483,153; Tax: 8,075,574
2016 - Mill Levy: 33.258; Valuation: 242,662,699; Tax: 8,083,163
2017 - Mill Levy: 33.219; Valuation: 257,802,811; Tax: 8,583,706
2018 - Mill Levy: 33.330; Valuation: 266,312,260; Tax: 8,891,744
2019 - Mill Levy: 33.077; Valuation: 276,722,072; Tax: 9,169,643
2020 - Mill Levy: 33.050; Valuation: 264,646,245; Tax: 8,759,789
2021 - Mill Levy: 33.093; Valuation: 271,742,776; Tax: 9,007,236