



## *HLC Accreditation Evidence*

- Assessment – OAC Members 2022

URL:

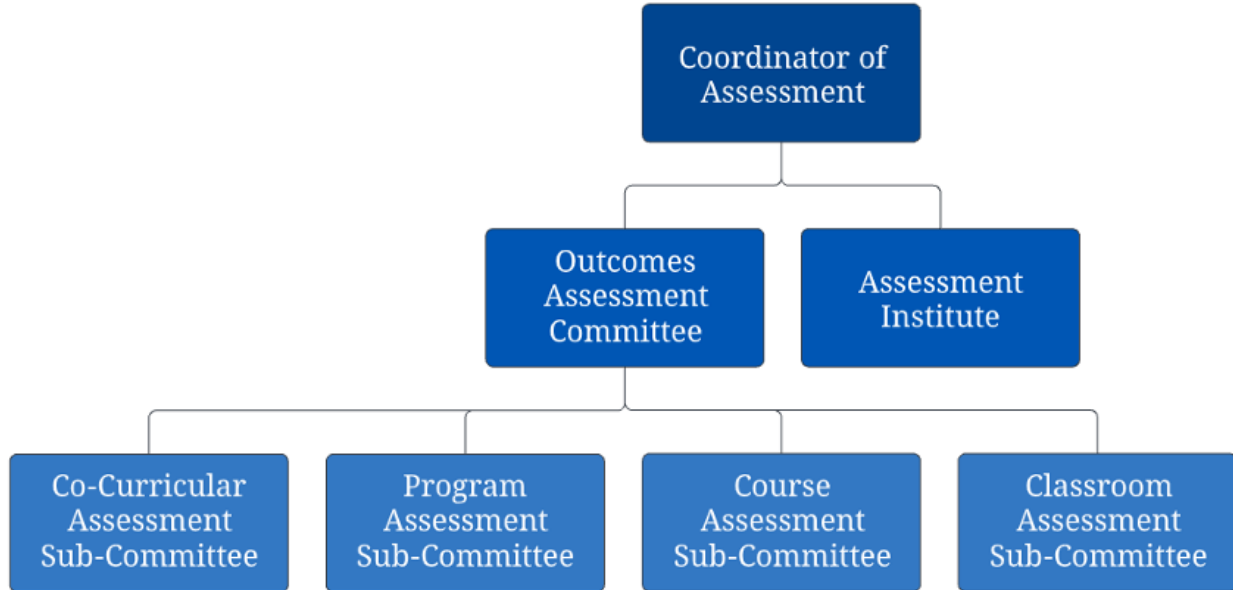
Office of Origin:

- Vice President of Instruction

Contact(s):

- Dean of Workforce Training and Community Education
  - Coordinator of Assessment

## BARTON'S ASSESSMENT COMMITTEE MEMBERS - 2022



### **Coordinator of Assessment**

- Jo Harrington – Mathematics Instructor

### **Outcomes Assessment Committee (OAC)**

- Jo Harrington – **Chair**
- Elaine Simmons – Vice-President of Instruction
- Stephanie Joiner – Subcommittee Chair
- Matt Connell – Subcommittee Chair
- Kurt Konda – Subcommittee Chair
- Leanne Miller – Director of Innovation & Compliance
- Randy Thode – Institutional Research
- Sarah Riegel – Recorder

### **Co-Curricular Assessment Sub-Committee (CCAC)**

- Stephanie Joiner – Executive Director of Foundational Studies – **Chair**
- Danika Bielek – Dance Instructor
- Maggie Tracy – Agriculture Instructor
- Sarah Riegel - Recorder

### **Classroom Assessment Sub-Committee (CLAS)**

- Matt Connell – Director of Instructional Excellence – **Chair**
- Ange Davied – Mathematics Instructor
- Brittany Fanshier – Nursing Instructor
- Heather Panning –Instructor/Coordinator of HPER
- Kim Specht – Early Childhood Instructor
- Lawrence Weber – OTIEC Instructor/Director

### **Course Assessment Sub-Committee (CAS)**

- Kurt Konda – Sociology Instructor – **Chair**
- Shawgi Ahmed – Gas Program Instructor
- Charlotte Cates – Biology Instructor
- Emily Cowles – Instructor/Coordinator of Dietary Manager Program
- Scott McDonald – English Instructor
- Oleg Ravitskiy – Life Science Instructor
- Laura Schlessiger – Mathematics Instructor
- Karly Little – Coordinator of Community Education
- Sarah Riegel – Recorder

### **Program Assessment Sub-Committee (PLAC)**

- Jo Harrington – Mathematics Instructor- **Chair**
- Jamie Abel – English Instructor
- Chris Baker – Executive Director of Healthcare and Public Service Education
- Yuchen Boswell - Media Communications and Production Instructor
- Colvin Hooser – Music Instructor
- Andrea Jenkins – Developmental Mathematics Instructor
- Claudia Mather – Associate Dean of Instruction
- Stephanie Joiner – Executive Director of Foundational Studies
- Randy Thode – Institutional Research
- Sarah Riegel – Recorder

### **Institutional Assessment Sub-Committee (IAS)**

- OAC/TBD

# ASSESSMENT INSTITUTE GRADUATES

## 2018 - 2019 Graduates

- Danika Bielek
- Charlotte Cates
- Kenneth Kolembe
- Kurt Konda
- Sara Oberle
- Laura Schlessiger
- Kimberly Specht

## 2019 - 2020 Graduates

- Kim Bradney
- Sara Hoff
- Claudia Mather
- Scott McDonald
- Heather Panning
- Oleg Ravitskiy
- Maggie Tracy

## 2020 - 2021 Graduates

- Eric Bundy
- Emily Cowles
- Melissa Hardwick
- Philip Jacobson
- Andrea Jenkins
- James Miller
- Luis Palacios
- Rhonda Wertz

## 2021 - 2022 Graduates

- Jaime Abel
- Shawgi Ahmed
- Chris Baker
- Yuchen Boswell
- Angela Campbell
- Marlo Chavarria
- Matt Connell
- Dan Garson
- Colvin Hooser
- Cathy Smith
- Lawrence Weber

**BARTON**  
ASSESSMENT  
INSTITUTE

