



## *HLC Accreditation Evidence*

- Shafer Art Gallery

URL:

Office of Origin:

- Vice President of Instruction

Contact(s):

- Dean of Academics



## About the Gallery

### About the L. E. "Gus" and Eva Shafer Memorial Art Gallery

The L.E. "Gus" and Eva Shafer Memorial Gallery has been called the "Gem of the Campus". Located in the Fine Arts building, the Shafer Gallery displays significant works by Gus Shafer, objects from Barton's growing permanent collection, and a rotating series of exhibitions from regional and national artists. Learn more about [upcoming exhibits and events!](#) Check out the archive [collection](#) on Flickr to view images of past exhibits, and check out the [current albums](#) for more recent events and exhibits.

The L. E. "Gus" and Eva Shafer Memorial Art Gallery has been referred to as the "Gem of the Campus" at Barton Community College. The Shafer Gallery demonstrates the perseverance of a dream and a strong commitment to culture and arts. The late Gus Shafer grew up near Hoisington, Kansas and gained international prominence for his bronze sculptures. After a monetary donation from Art, Inc. in 1984, the BCCC Foundation began seeking major gifts for the building of an art gallery on campus. Mrs. Eva Shafer made an outright commitment and ground was broken on September 22, 1991. The grand opening was held November 1, 1992.

The 7,709 square feet of exhibit space, based on repeating hexagons, can change configurations to accommodate many different sizes and types of exhibits. The gallery features a glass-enclosed lobby and a sculpture area featuring Shafer's work. The gallery allows extensive display of Barton's permanent art collection and provides the necessary temperature, lighting and security requirements to qualify for exhibits from the Smithsonian Institution; Exhibits USA; Mid-America Arts Alliance; and Smith-Kramer, Inc. Each year, the gallery attracts thousands of visitors from the local area and the Midwest, as well as those from across the country and abroad.

### The Art (Our permanent collection)

The Gallery's roots date back to 1981, when Mrs. Faerie Denman of Great Bend donated the extensive 507-piece art collection that she and her husband Cedric, had acquired over the years. The collection, valued at more than \$200,000, demanded proper storage and the means by which Barton could share the artwork with the community. Now numbering more than 800 pieces, the Permanent Art Collection includes 28 of Shafer's bronzes and more than 100 works by Great Bend native Charles B. Rogers. The collection also contains masterpieces by such artistic giants as Chagall, Matisse, Picasso, Audubon, as well as many others.

### Gus Shafer

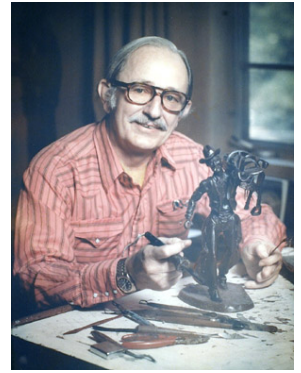
A son of the Kansas prairie, Leonard E. "Gus" Shafer was born January 23, 1907, on a farm southwest of Hoisington, Kansas.

A farm hand named "Old Ben" taught him to hunt, trap and ride. Shafer felt that the influence of Old Ben and his grandfather caused him to have such interest in the Old West.

While attending a small one-room schoolhouse, Shafer learned to draw. Following graduation from Hoisington High School in 1925, he attended Grinnell College in Iowa and Kansas State Teachers College, Emporia, Kan., where he met Eva.

They were married in 1930 and moved to Kansas City where he worked for 38 years as a commercial artist. He sculpted his first model for casting in 1966 at the age of 59.

In 1968 he closed his art studio and began sculpting bronzes full time, for which he later became internationally famous. L. E. "Gus" Shafer passed away on May 5, 1985, but his legacy lives on, here, in the gallery.



### [2020-21 Gallery Report](#)

# BARTON

## COMMUNITY COLLEGE

[MyBarton Portal](#)

[Privacy](#)

[Employment](#)

[Text Alert](#)

[Notice of Non-discrimination](#)

[Policies and Procedures](#)

[Net Price Calculator](#)

[Kansas DegreeStats](#)

[Transparency](#)

[Faculty and Staff](#)

[Barton Home](#)

[Barton Online](#)

[Ft. Leavenworth Campus](#)

[Ft. Riley Campus](#)

[Grandview Plaza Campus](#)

[Barton Safety Training](#)

[Military Training](#)

[Barton Foundation](#)



Barton Community College  
245 NE 30 RD  
Great Bend, KS 67530  
(800) 748-7594 | (620) 792-2701

[Feedback](#) | [Contact](#)

 Talk to us!



## *HLC Accreditation Evidence*

- Shafer Art Gallery – 2021-2022 Annual Report

URL:

Office of Origin:

- Vice President of Instruction

Contact(s):

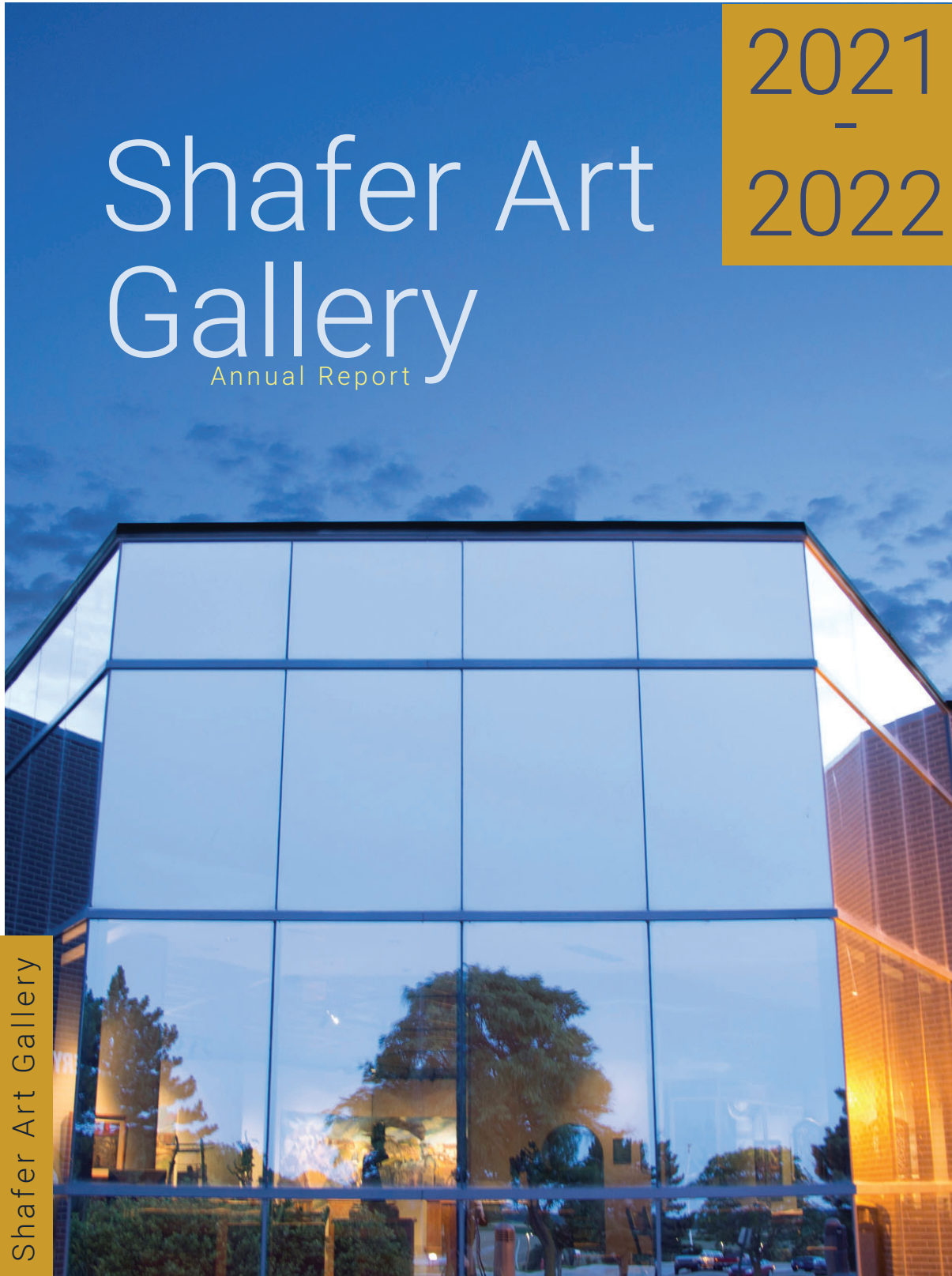
- Dean of Academics

# Shafer Art Gallery

Annual Report

2021  
-  
2022

Shafer Art Gallery





# INDEX

## 01

---

Director's Note

## 02-11

---

### Exhibitions

Material Pulses	04
Friends and Acquaintances	05
Behind the Metal Door	06-07
Human/Nature	08
Bart Art	09
Palimpsest	10
Virtual Vortex	11

## 12-17

---

### Happenings

Bill McKown Award	14
Lovin Lizards	15
Facebook Live	
Bart Art Awards	16
Artists at Large Workshop	
Masquerade Ball	17
Scarlett and AI	

## 18-21

---

### New Acquisitions

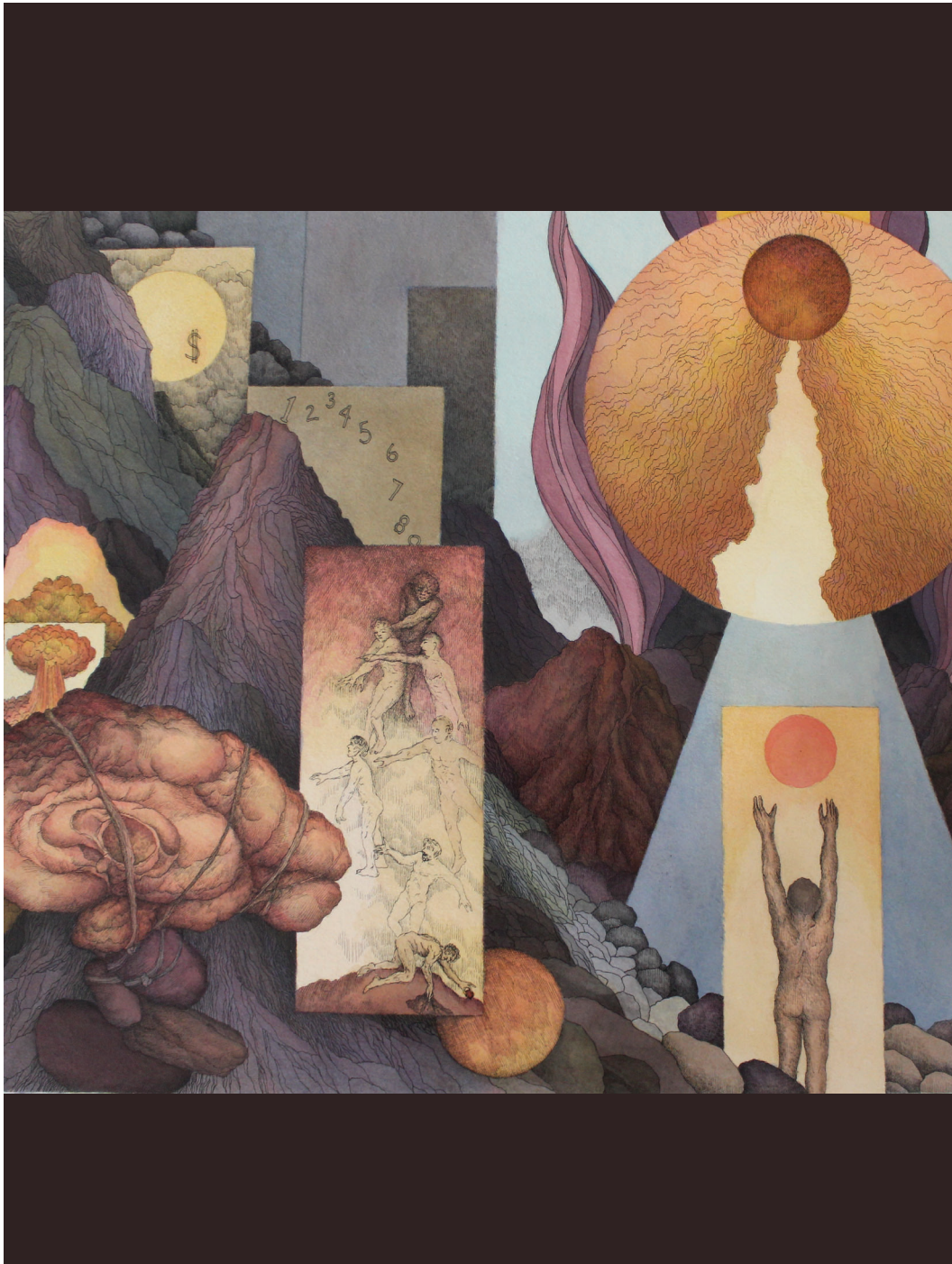
Frank Nichols	19
Scott Thein	20
Thein Miksa Timar	21

## 22

---

### Foundation Review





# Director's Note

2022

On the campus of Barton Community College the Gus and Eva Shafer Memorial Art Gallery, now more commonly referred to as the Shafer Gallery, has 8,000 square feet of exhibition space where, as its motto promises "The Old West Meets the Future". The Shafer Gallery offers its visitors monthly exhibitions by trending, regional and nationally known artists; and interactive activities for the family.

The Shafer Gallery was originally conceived in 1981 as a way to house and exhibit works from the Faerie Denham art collection that she and her husband Cedric had acquired over the years. It became the foundation of the current Shafer Gallery permanent collection which boasts over 900 works of fine art. It includes work from Shafer, Charles Rogers, Birger Sandzen, and a smattering of works by luminaries such as Dali, Bellows, Picasso, Audubon and many others.

Its 30 year history has shown the Shafer Gallery to be a significant cultural institution in central Kansas. Since the hiring of the first Gallery Director, Norma Ward, the Shafer Gallery has hosted thousands of visitors and organized hundreds of exhibitions. The gallery has been a gateway opening up the BCC campus to the greater Barton County community and the world. Collaboration is the key to the survival of a small art center and we have partnered with numerous state and private institutions and agencies. The accompanying side bar is a short list of the partnerships we have had in only the last 7 years. In some cases these involved sharing financial resources, curatorial and educational concepts, volunteers and physical venues.

We have tried to model the college's commitment to community engagement in our programming and vision and I believe we have become an important asset to the college as a welcoming accessible destination for quality aesthetic experiences. Constructing events and exhibitions that directly engage the increasing diversity and complexity of the Barton County community has become the major focus of the Shafer Gallery.

*David Damm*

Gallery Director

# Partnerships

2016-2021

These groups and organizations provided significant financial support, shared assets and or provided curatorial and planning input for Gallery programs and special events. They shared benefits and fulfillment of common goals.

Great Bend, Larned, Ellinwood, Hoisington, Stafford, and Central Plains School Districts

Barton County Arts Council

Bill J McKown Memorial Endowment/  
Golden Belt Foundation

Kansas Wetlands Education Center

Check-A-Dee Check Off Foundation

Ellsworth Correctional Facility

Sedgwick County Zoo

National Quilt Museum

KansasKids @Gear Up

Kansas Department of Wildlife, Parks and  
Tourism

Great Bend Zoo

Mid-America Arts Alliance

CUNA Mutual Retirement Solutions

Kansas Academy for Victim Assistance

St. Justa Ceramics Guild

Helping Hands Pre-School

Glen and Elaine Mull Educational Outreach

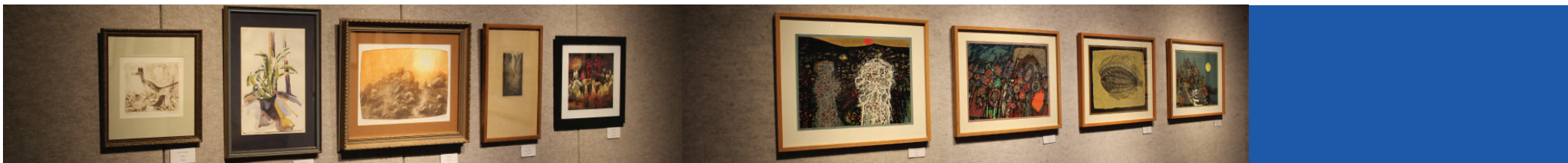
Great Bend Chamber of Commerce Young  
Professionals

Kansas Creative Arts Industry Commission  
/ National Endowment for the Arts

St John's Episcopal Church

Barton County Food Bank

Sandzen Memorial Gallery



# Exhibitions

04

Material Pulses



05

Friends and Acquaintances



06

Behind the Metal Door



07

Human/Nature



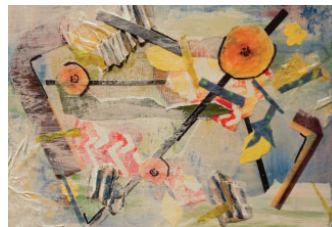
08

Bart Art



09

Palimpsest

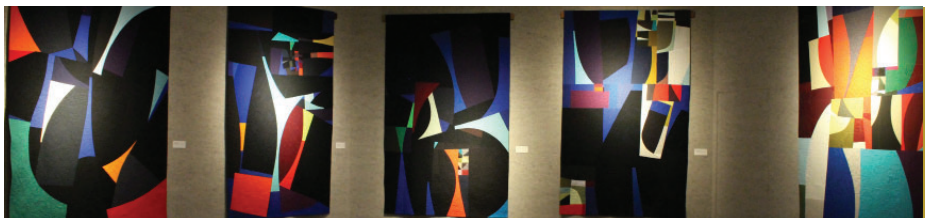


10

Virtual Vortex







# Material Pulses:Seven Viewpoints

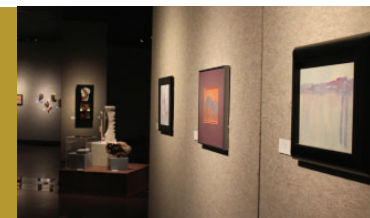
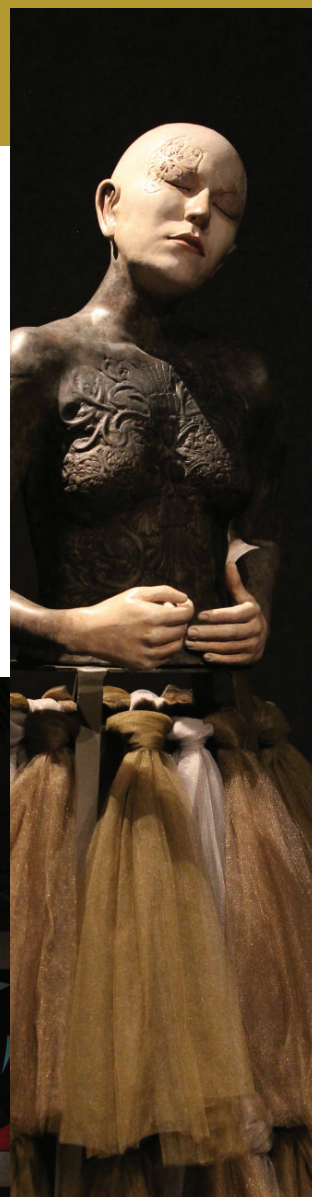
Quilt Exhibition

June 21-October 20

We have an established tradition of showing quilts, there is something about the ethos of quilt-making that shouts the American experience and the resilience of community values. Hard work, care giving, the creative use of resources and banding together for a common goal are all aspects of the quilting heritage. Nothing quite illustrates the our tag line 'Where the Old West Meets the Future' so well as the ever-evolving tradition of quilt making.

The artists investigated color, pattern, and size through traditional and experimental quilt making applications. The curator balanced a focus on shapes with oversized works, exploring excellence in machine quilting and surface design.

With the help of the National Endowment for the Humanities, we exhibited quilts from the premiere Exhibits USA traveling art exhibit program. The work in this exhibit was made from a Fine Arts perspective and we hope it gave our visitors a whole new and very contemporary quilt experience.

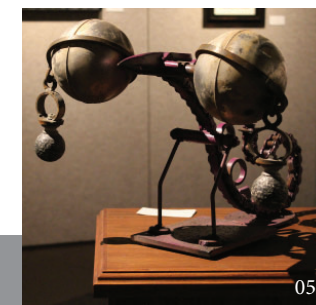
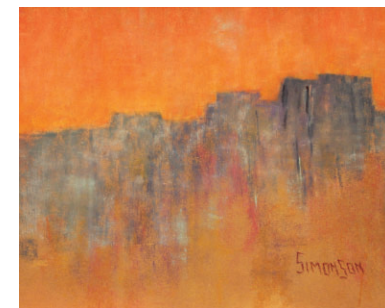
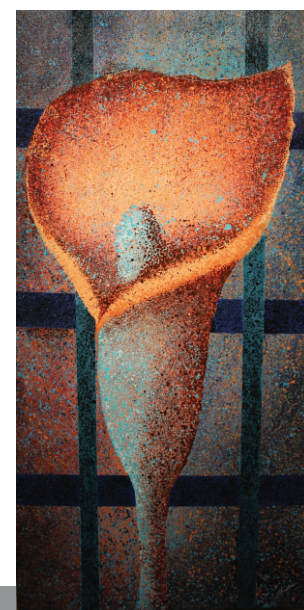


# Friends and Acquaintances

Barton County Arts Council

October 29-December 10

Once a year the we have the privilege to showcase art made by our friends, acquaintances and some folks we hardly know. It's the Barton Arts Council Friends and Acquaintances Community Art Exhibit. The art in this show reflects the variety and quality of art work being produced by folks in our area. Everyone in the exhibit is a dedicated artist whether they be professional or amateur. It is wonderful that this amazing variety of artists all speak the same language. It is a language of forms and visual elements chosen to communicate ideas, memories feelings and mood. While the exhibit is not primarily a marketplace it was certainly an opportunity to experience firsthand the work of local artists.





# Behind the Metal Door

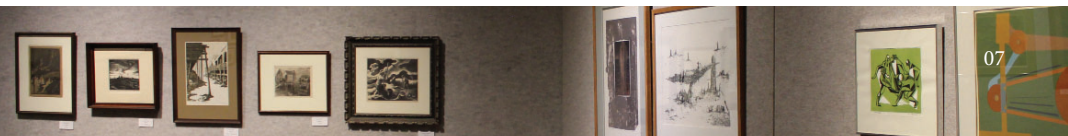
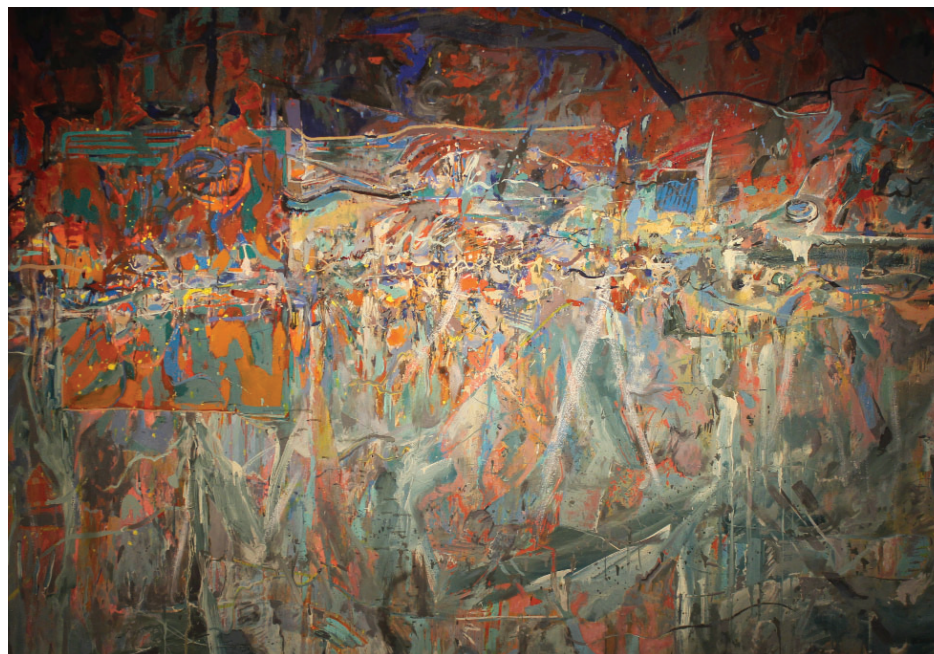
## Permanent Collection

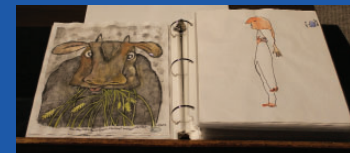
January 14-February 25

We don't just host quality exhibits by regional national and international artists but also have a growing permanent art collection. Over the years the Gallery has acquired, through gift and direct acquisition, a diverse body of work. Sometimes the work added to our collection has been donated as a way of sharing with our community and preserving into the future beloved works of art that have a special place in the lives of the donors. Sometimes they are donated with the tax credit attached to them in mind. On occasion, working with the Barton Community College Foundation, we receive funding that allows us to purchase works of art. Regardless of how we receive them, each work adds to the cultural treasure of our community.

Our ability to store and take care of art works is limited. Therefore, not every work of art is accepted into the permanent collection. Our criteria of selection is based upon the quality, value, and how well the offered art work meets the Gallery's vision.

The eighty works in the Behind the Metal Door Exhibit showcased the many styles, media and decades of the art work that is housed behind the metal door of our collection room. Some of it has been acquired recently, some of it dates back to the founding of the Shafer Gallery.





# Human/Nature

Fort Hays State University

March 4-April 11

The Shafer Gallery is presented work by three talented Fort Hays State Graduate students. Mark Freeman, Jordan Brown and Kathy Robb are ceramicists with unique and very personal ideas about what you can do with clay. Each dealt in some way with the connections between the natural and the human world.

Kathy Robb created dioramas to contain her anthropomorphic animal sculptures which reflect her own identification with animals and how they reflect the human condition in a direct way. They are sometimes humorous and often poignant. Mark Freeman has taught ceramics at Pratt Community College and apprenticed with well-known ceramic artist Carol Long. His work explores the minutiae of the natural world populated with entities that are beyond our normal awareness. Jordan Brown is the master of the wheel and adorns his monumental feeling pieces with iconic images from the natural world.

It is a great privilege to show off the work of such strong emerging artists. Their work will be a delight for us all to see and an inspiration to our own Barton Community College students.

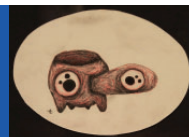


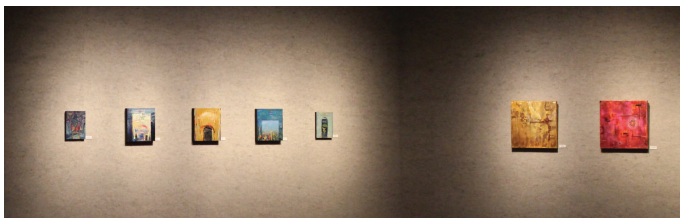
# Bart Art

Faculty, Staff, and Student Show

April 8-May 13

Our yearly event celebrating students, faculty, and staff at Barton Community College. Students are welcome to enter work they have made during the school year and faculty and staff and asked to show us what they can do as well. Awards were made in three categories: painting, graphic media, and ceramics.





# Palimpsest

Society of Layerists in Multi-Media

May 9-June 23

SLMM is a national network organization for artists who express a holistic perspective or attitude in their work in any style or medium. The exhibit included artists from around the state of Kansas and the mid-west.

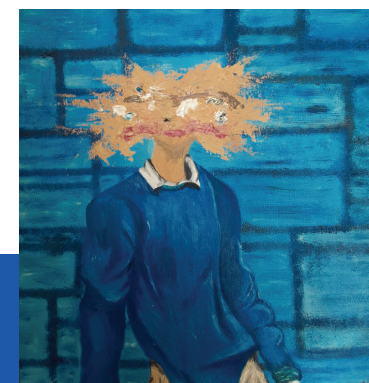


# Virtual Vortex

Area High School Art Show

[virtualvortex2022.myportfolio.com](http://virtualvortex2022.myportfolio.com)

We are always proud to showcase area high school student artwork. The Virtual Vortex was accessible to teachers, students, family and their friends online. The Shafer Gallery received over 300 entries this year representing Central Plains, Ellinwood, Great Bend, Hoisington, Larned, and St. John-Hudson High Schools. Judges were Barton Community College faculty, Bill Forst (ceramics instructor), Dave Barnes (gallery director), Phil Jacobson (painting instructor), and Yuchen Boswell (photography instructor).



# HAPPENINGS



14

Bill McKown Award



15

Lovin Lizards Workshop



Facebook Live



16

Bart Art Awards



Artists at Large Workshop

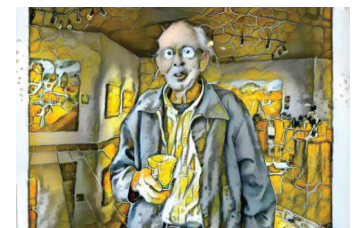


17

Masquerade Ball



Scarlett and AI



## Bill McKown

Distinguished Service Award  
May 13th



As part of the ceremony at this year's Barton Community College graduation, the Barton Community College Foundation honored Bill McKown as the 2022 recipient of the Distinguished Service Award (DSA). Bill's Brother, David McKown, accepted the award on his behalf. The DSA was created in 1981 to recognize individuals that have shown genuine regard for and performed outstanding service to Barton Community College. A lover of the arts, McKown took numerous classes at Barton in the Fine Arts department and was awarded Best-in-Show at the Barton Student Exhibition Show for his graphic design work two years in a row. Bill was a regular fixture at the Shafer Gallery for many before his death in 2014. Bill never missed an opportunity to participate in Shafer Gallery events. He was the first person to greet Dave Barnes when he arrived in Great Bend 12 years ago. Bill left the Shafer Gallery funds which enabled us to commission the "How to Build a Metal Horse" educational kiosk. His legacy also enabled casting the dramatic Winged Aspiration bronze sculpture which greets visitors entering the Fine Arts Building. He made sure that monies were given to the Barton Art Department and via the work of the BCC Foundation and the Golden Belt Foundation major upgrades were made in the studio and graphic design area. We miss Bill, he was a good friend. We have named our Fall celebration of local artists the McKown Artist's Masquerade Ball.



## Lovin' Lizards Workshop

Kathy Robb  
April 1st



Kathy Robb is one of the ceramic artists whose work was showcased in the Human Nature show. The event kicked off at noon with a brown bag lunch in the Shafer Gallery. Then the group moved to the Art Department where Kathy gave a presentation concerning chameleons. Afterwards participants moved to the ceramics lab where they had a hands on opportunity to carve their own creatures.

## Facebook Live

Human/Nature  
April 4th

A walk around the gallery with our director Dave Barnes hearing his thoughts on the exhibit Human/Nature.

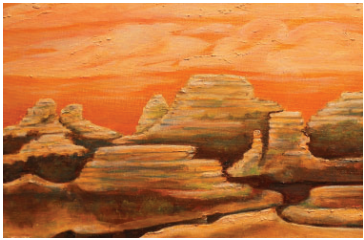


## Bart Art

Awards Ceremony  
April 8th



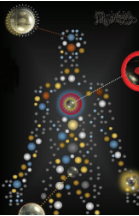
Ron Micheal presented art supplies to winners at this years Bart Art Award Ceremony. Prizes were courtesy of local artist, Billie Bonomo. Thank you Billie!



## McKown Artist's Masquerade Ball

And Reception  
December 10th

Artist  
Presentation



Attendees enjoyed a night of conversations and snacks with local artists as one of our first in person events since shutting down for covid. Around 30 - 40 people and most wore masks so we could all be safe.



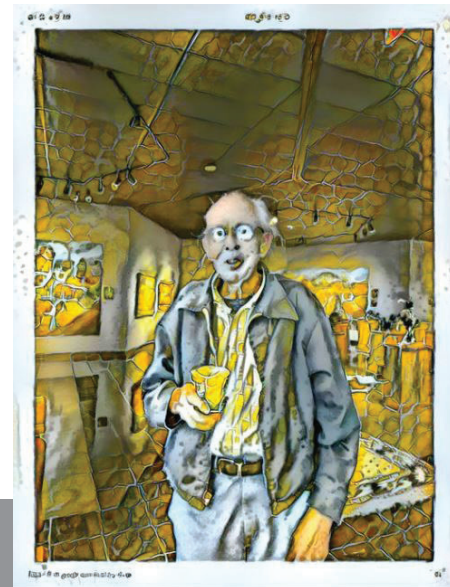
## Interaction of Color Workshop

Given to Artistis at Large  
June 3rd

Shafer Gallery Associate, Alyssa Bliven, lead a workshop covering Josef Albers book "Interaction of Color" to Great Bend's local artist group Artists at Large or AAL.



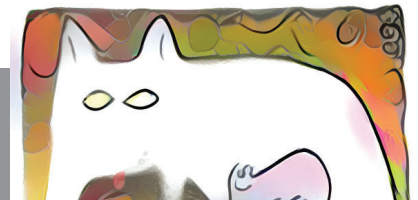
16



## Scarlett and AI

Deep Dream Generator  
February 7th

This Facebook post reached 870+ people all by itself. Featuring local artist Scarlett (Robert Joy) and the AI (Deep Dream Generator). We took a portrait of Scarlett and a scan of one of her recent drawings and told the AI to re-due that portrait in the style of Scarlett's work. The outcome was almost as if Scarlett drew the image herself, but of course not quite. We enjoyed facilitating this collaboration and glad to see how it was appreciated by others!



17



# NEW ACQUISITIONS

## Frank Nichols

Fort Hays State University  
Printmaking Professor from 1967-1999

He was a charter member of the High Plains Printmakers and his work in the areas of drawing, painting and printmaking were widely exhibited in solo exhibitions as well as in over 250 competitive exhibitions across the country through which he earned numerous awards. Until his death in May of 2013, he continued to work 8-10 hours a day, producing new and exciting work in his home studio.

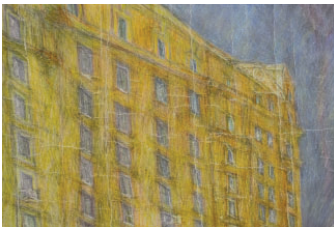
19

Frank Nichols



20

Scott Thein



21

Thein-Miksa Timar



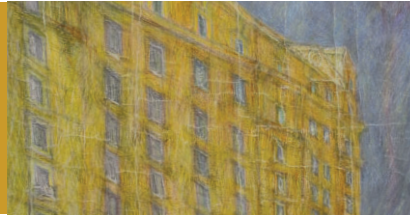
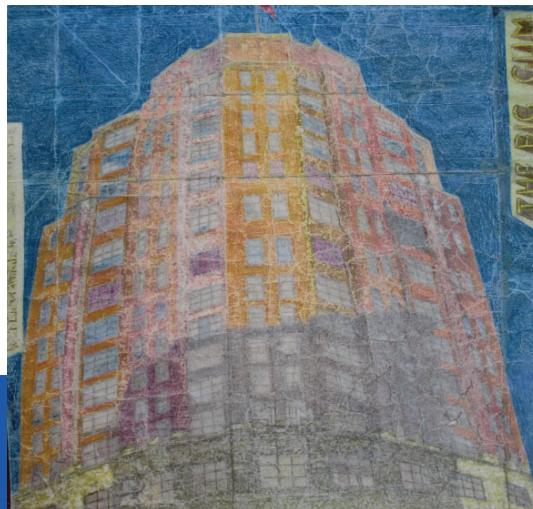


# Scott Thien

Local Artist and Friend

1953-2022

Seventeen pieces by the late Scott Thien, who passed June 8, 2022, were added to the gallery's permanent collection. These drawings were featured in his show Heidegger's Ghost displayed at the gallery in 2016.



# Thein-Miksa Timar

Prominent Hungarian Artist

1874 - 1940

An oil painting by Thein-Miksa Timar, a prominent Hungarian artist who died in the Holocaust, was given to the gallery by Scott Thien. Thein, who passed away in June 2022, was an artist and friend of the Gallery who exhibited here frequently. He also established a fund to restore the Miksa Timar painting and generously provide additional funds for ongoing and future conservation projects at the Shaffer Gallery.



## Barton Community College Foundation Partners in Action

The permanent fine art collection in the Shafer Gallery is owned by the Foundation, and the care and management of the collection is a successful partnership between the Foundation and Gallery. The Foundation also manages multiple funds and endowments created for the support and enhancement to the collection and the Gallery.

In addition to this partnership, The Foundation supports scholarships and enhancements to Barton programs, facilities, and projects across all campuses. In total, there are 167 funds held and managed by the Foundation, each created by unique donor stories and experiences. The Foundation takes their mission seriously - and fulfills it with the generosity of donors from inside and outside Barton campuses doing great things, including awarding:

**\$362,156.40** in scholarship funds to Barton students

**\$216,059.70** in program and facility enhancements across all Barton





245 NE 30 RD  
GREAT BEND KS 67530

620.792.9342

[SHAFERGALLERY@BARTONCCC.EDU](mailto:SHAFERGALLERY@BARTONCCC.EDU)

[SHAFERGALLERY.ORG](http://SHAFERGALLERY.ORG)  
[SHAFERGALLERY.MYPORTFOLIO.COM](http://SHAFERGALLERY.MYPORTFOLIO.COM)

ALSO FIND US ON:  
FACEBOOK, INSTAGRAM AND TWITTER  
[@shafergallery](#)