



# 2025 COMMUNITY REPORT

# ***BARTON***

***COMMUNITY COLLEGE***



The Barton Community College Board of Trustees is proud to present Report 2025, highlighting the College's progress in meeting the direction provided by your elected board.



## MISSION

**Barton Community College offers exceptional and affordable learning opportunities supporting student, community, and employee needs.**

We will seek to achieve our mission through eight ENDs and four Core Priorities (Values) that define our commitment to excellence in education.

## ENDs

- END 1: Fundamental Skills
- END 2: Work Preparedness
- END 3: Academic Advancement
- END 4: Barton Experience
- END 5: Regional Workforce Needs
- END 6: Barton Services and Regional Locations
- END 7: Strategic Planning
- END 8: Contingency Planning

## CORE PRIORITIES

- Drive Student Success
- Cultivate Community Engagement
- Optimize the Barton Experience
- Emphasize Institutional Effectiveness

**VISION: BARTON COMMUNITY COLLEGE WILL BE A LEADING EDUCATIONAL INSTITUTION, RECOGNIZED FOR BEING INNOVATIVE AND HAVING OUTSTANDING PEOPLE, PROGRAMS, AND SERVICES.**

# REPORT 2025

## TABLE OF CONTENTS

04	BOARD OF TRUSTEES
05	LETTER FROM BOARD CHAIR MIKE JOHNSON
06	END 1: FUNDAMENTAL SKILLS
08	END 2: WORK PREPAREDNESS
10	END 3: ACADEMIC ADVANCEMENT
12	END 4: BARTON EXPERIENCE
14	END 5: REGIONAL WORKFORCE NEEDS
16	FOUNDATION UPDATE
18	END 6: BARTON SERVICES AND REGIONAL LOCATIONS
20	END 7: STRATEGIC PLANNING & END 8: CONTINGENCY PLANNING
21	SHAFFER GALLERY UPDATE
22	BARTON BY THE NUMBERS
24	ATHLETICS HIGHLIGHTS



# BOARD OF TRUSTEES

The Board is committed to transparency and accountability to the public.

Visit [transparency.bartonccc.edu](https://transparency.bartonccc.edu) for data that paints a real-time picture of how the institution is doing.



**MIKE JOHNSON**

*Great Bend*



**COLE SCHWARZ**

*Great Bend*



**JOHN MOSHIER**

*Hoisington*



**CARL HELM**

*Great Bend*



**GARY BURKE**

*Great Bend*



**DALE MANETH**

*Olmitz*



**DR. MARCUS GARSTECKI**

*President*

Barton Community College continues to stay at the forefront of our peers by innovating in the classroom, providing exceptional student services and support, and developing nationally ranked athletic teams and student organizations. Through a continued focus on creating new programming, as well as affordable, accessible educational options, the College reaffirms its commitment to our students and the communities we serve. The College continues to be well-positioned financially thanks to the stewardship of our Board of Trustees and careful budget management across the institution. This report is designed to share data and stories highlighting the impact Barton has on our students and the community. Please visit [report.bartonccc.edu](https://report.bartonccc.edu) or email [trustee@bartonccc.edu](mailto:trustee@bartonccc.edu) for more information.



Dear Constituents,

Thank you for taking the time to explore the 2025 Community Report. It is designed to bring you up to speed on the happenings at the College in the 2024-2025 academic year and the College's progress toward meeting its mission. This publication contains a wealth of information about the College but if you still have questions, I would encourage you to contact the Board of Trustees through the website at [trustees.bartonccc.edu](https://trustees.bartonccc.edu). Before you turn the page, here are a few highlights from the last year:

### **PROGRAMMING UPDATES**

The College continues to maintain a strong commitment to expand educational opportunities by introducing innovative programs tailored to meet the evolving needs of students and the local workforce. Recent additions such as the Medical Lab Assistant program, and Respiratory Care program in partnership with Hutchinson Community College reflect this dedication. These initiatives provide specialized training and hands-on experience in high-demand fields, preparing students for the workforce and career advancement.

### **TEXTBOOK FREEDOM**

The Textbook Freedom initiative supports student success by reducing costs and increasing access to educational resources. Through Open Educational Resources (OER), students can complete general education and associate degrees with all course materials costing \$50 or less per course. This initiative saves students money, provides immediate access to materials, and improves the learning process, helping students complete their degrees more efficiently.

### **GROWING ENROLLMENT**

For the ninth consecutive year, Barton achieved the second-largest headcount among community colleges in Kansas. Barton served 12,325 students in 2024-2025, with a 12.2% increase in credit hours delivered. This success is a testament to Barton's proactive approach, which includes expanding programs that meet workforce needs, providing accessible and flexible learning options, and establishing strong partnerships with local industries. By consistently innovating and adapting to student and community demands, Barton continues to provide high-quality education and maintain its position as a leader in enrollment.

### **FINANCIAL RESPONSIBILITY**

The Barton Community College Board of Trustees is pleased to remain revenue neutral, dropping the mill levy to generate the same tax dollars as last year. Hard work, planning, and commitment from the College faculty, staff, and administration allow us to keep the local tax burden as light as possible, which is a noted priority.

Sincerely,

A handwritten signature in black ink, appearing to read "Mike Johnson", with a long horizontal flourish extending to the right.

Mike Johnson | Board Chair | Barton Community College Board of Trustees

## END 1: FUNDAMENTAL SKILLS

*Students will acquire the skills needed to be successful for the program they are enrolled.*

- Students will have the fundamental skills to succeed in the workplace.
- Students will have the fundamental skills to lead productive lives.
- Students will be provided remediation as needed.

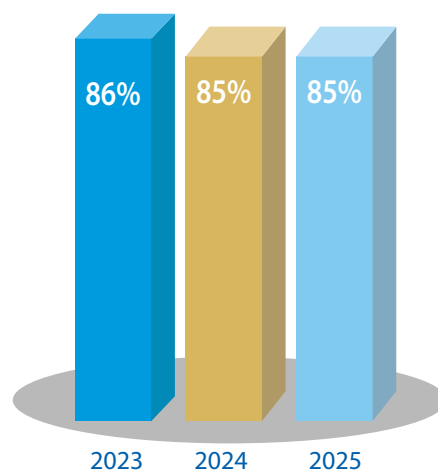
## ASSESSMENT EXPLAINED

Assessment is a process of continuous improvement and is the driving force that can build a more effective course, a more meaningful degree, and a more potent educational experience for Barton students. By identifying and focusing on the topics students are struggling with, faculty can make strategic improvements to their courses. Assessment of the Fundamental Outcomes serve as an indicator of the Fundamental Skills retained by our students and their ability to lead productive lives.

### FUNDAMENTAL OUTCOMES

1. Critical Thinking
2. Life-Long Learning
3. Historical Perspective
4. **Technological Perspective (2025 featured outcome)**  
*Explain how technologies affect important parts of human life and how information technologies shape the study of a given subject.*
5. Cultural Perspective

The graph to the right represents the percent of students who correctly answered specific questions designed to assess the student body. A benchmark of 70% is used and as shown, the Fundamental Outcome is above this mark.



## HIGH SCHOOL EQUIVALENCY DEGREE

Barton Community College offers a High School Equivalency degree program for individuals who did not complete high school. In fiscal year 2025, Barton issued 45 High School Diplomas with services in three locations: Downtown Great Bend, Larned State Correctional Facility, and Ellsworth Correctional Facility. Nearly 40% of those students moved on to post-secondary education. **118 students were served through Adult Education programming!**

“Adult education is about building bridges—connecting people to opportunities, confidence, and hope. Our students inspire us with their resilience and commitment to growth, proving that it’s never too late to learn.”

– Melissa Feist | Adult Education Coordinator



### ALUMNI TESTIMONIAL

“My high school offered Barton courses at a much lower cost while completing my general education classes. I was also struggling with my future career choices, so I was able to try out some medical classes, and I realized that I was much more interested in engineering and industry. **Barton helped pave the path for my future and saved me so much money.**”

– Maddie Sohm | Russell High School/Barton Dual Graduate

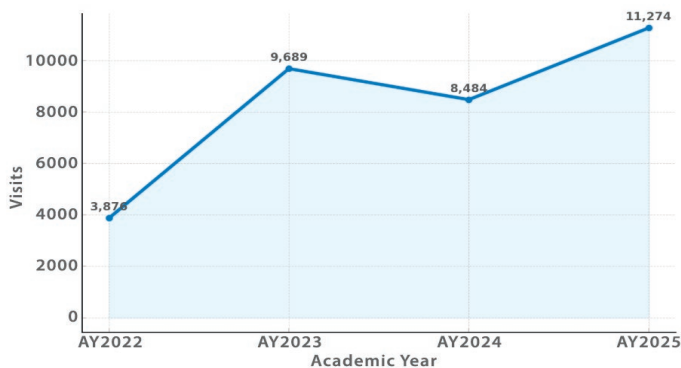
## STUDENT ACADEMIC DEVELOPMENT

more than  
**11,000**  
Student  
ADC Visits in  
2024-2025

over  
**13%**  
Increase of Student  
Visits from AY24  
to AY 25

The vision of the Academic Development Center (ADC) is that all students will possess the academic skills to successfully navigate collegiate coursework and campus culture. Our vision is built on the belief that with targeted support, students can find academic success. The ADC supports all students in their development of academic skills by providing academic coaching, student-centered research, timely communication strategies, and student advocacy. On average, students who participate in ADC services at least once a week during the academic year maintain a GPA of 3.51.

### ADC VISITS



### ACADEMIC COACHING

Academic coaching is a one-on-one process of helping a student examine academic concerns and empowering them in developing academic skills for college success. Coaches will provide students with semester long academic support in areas such as time management, study skills, test preparation, and note taking.

The coaches will work individually with students, assess their strengths, and devise a personalized plan of action and through this process connect students with campus resources and an academic community that fosters a sense of belonging and college engagement.

### ESSENTIAL SKILLS EXPLAINED



#### SELF-MANAGEMENT SKILLS

- Dependability & Reliability
- Planning & Organization
- Integrity
- Initiative
- Stress Management

#### INTERPERSONAL SKILLS

- Communication
- Adaptability
- Respect
- Teamwork
- Emotional Intelligence



#### APPLIED SKILLS

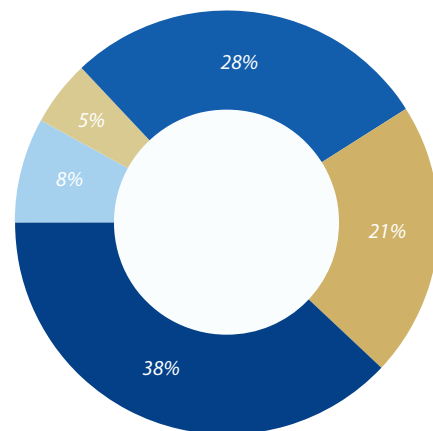
- Writing
- Mathematics
- Science
- Critical Thinking
- Creativity

#### WORKFORCE SKILLS

- Professionalism
- Workplace Fundamentals
- Problem Solving
- Decision Making
- Customer Service
- Technology



### ACADEMIC COACHING SESSION TOPICS AS REQUESTED BY STUDENTS



● Study Skills and Test Prep

● Academic Planning

● Direct Resource Referral

● Time Management

● Transfer Questions



## END 2: WORK PREPAREDNESS

*Students will be prepared for success in the workplace.*

- Students will have the skills and knowledge required for successful entry into the workplace.
- Students will have the work ethics, discipline, and collaborative skills necessary to be successful in the workplace.
- Students will have the technical knowledge, skills and abilities necessary to maintain, advance, or change their employment or occupation.



### ALUMNI TESTIMONIAL

After completing Barton's Construction Technology Program in just one semester, Brecken Carroll of Great Bend quickly secured full-time employment with MPIRE Improvements as part of the window installation crew. With hands-on training, real-world experience, and zero debt, she entered the workforce fully prepared and confident in her new career.

"The hands-on experience prepared me for the real world because it would have been way more of an adjustment just to get thrown into working with the crew and not knowing anything. It was nice that I didn't have to start from scratch when I joined the team and had some experience. I wouldn't have the job that I have right now if I didn't come here, and I'm very grateful."

– Brecken Carroll | Barton Construction Technology Graduate



### ALUMNI TESTIMONIAL

At just 19 years old, Eston Juno of Otis completed Barton's Natural Gas Program and entered the workforce after only one year of training. Drawn to the industry's strong job prospects, competitive pay, and hands-on nature, he developed both technical expertise and professional skills that prepared him for success.

"The Barton program and my career in natural gas were the best things that ever happened to me. The job can be challenging in certain weather conditions, but most of the time I enjoyed being outdoors, and that you get to work with your hands, and you get to work without somebody staring over your shoulder all the time."

– Eston Juno | Barton Natural Gas Graduate

## 207 EXCEL IN CTE COURSES

Excel in CTE is a state program that allows high school students to take career & technical education courses with no tuition charged! Barton has 207 courses that qualify for this program, including courses that can lead to gainful employment after one semester, such as Certified Nurse Aid.



## PROGRAMS WITH HIGHEST STUDENT COMPLETION

A total of 1,019 students completed a certificate and/or degree program.



### CAREER & TECHNICAL EDUCATION PROGRAMS WITH MOST COMPLETERS

	TOTALS
CERTIFIED NURSING AIDE	108
WELDING TECHNOLOGY	58
EMERGENCY MEDICAL TECHNICIAN	49
REGISTERED NURSING	43
COMMERCIAL DRIVER'S LICENSE	42
PHLEBOTOMY TRAINING	37
CERTIFIED MEDICATION AIDE	22
PRACTICAL NURSING	21
DIETARY MANAGER	17
MEDICAL CODING	16
ADVANCED EMERGENCY MEDICAL TECH	16
PARAMEDIC	14

## INDUSTRY CERTIFICATION PASS RATES

Many programs include training to pass industry certifications to ensure graduates have the skills necessary to excel in the industry. The tables below reflect the rate at which our students are able to pass a third-party certification exam on the first attempt.

### PASS RATES – TRADES & TECHNOLOGY

	%
COMMERCIAL DRIVER'S LICENSE	93
PLUMBING - NCCER PLUMBING 1	88
PLUMBING - NCCER - CORE	100
PLUMBING - OSHA 10	100
CARPENTRY NCCER - 1	100
CARPENTRY NCCER	100
CARPENTRY - OSHA 10	100
WELDING - SAFETY	100
WELDING - BLUEPRINT	95
WELDING - GTAW	91
WELDING - CUTTING	92
WELDING - GMAW	95
WELDING - SMAW	97

### PASS RATES – HEALTHCARE

	%
REGISTERED NURSE (RN)	95
PRACTICAL NURSING (PN)	100
CERTIFIED NURSE AIDE (CNA)	98
CERTIFIED MEDICATION AIDE (CMA)	83
MEDICAL LABORATORY TECHNICIAN (MLT)	100
EMT	67
ADVANCED EMT	82
PARAMEDIC	81
DIETARY MANAGER	80
PHARMACY TECHNICIAN	100
MEDICAL ASSISTANT	100

## END 3: ACADEMIC ADVANCEMENT

*Students desiring academic advancement will be prepared for successful transfer to other colleges and universities.*

- Students will have the appropriate academic coursework for successful transfer.
- Students will have appropriate awareness of transfer requirements.
- Students will have adequate preparation to be academically successful after transfer to other institutions.
- Students will be able to obtain Bachelor's and advanced degrees by continuing their studies in a 2+2 program, a systemwide transfer agreement, or other partnership agreement.

## TRANSFER AGREEMENT PARTNERSHIPS

Barton has established partnerships with several colleges and universities across the state and beyond, with dozens of possible degree pathways. For more information see [transfer.bartonccc.edu](https://transfer.bartonccc.edu).

### BUILDING SUCCESS: BARTON GRAD'S PATH TO SENIOR ACCOUNTANT

Barton alum Emmy Kempke of Ellsworth attended Barton in 2018 and has since built a thriving career as a Senior Staff Accountant at Adams Brown in downtown Wichita, a nationally recognized CPA and professional services firm. Her experience as a student associate with Adams Brown during her time at Barton helped shape her career path and confirm her passion for accounting.

Emmy credits Barton's strong academic foundation, supportive instructors, and hands-on learning environment for preparing her to succeed both professionally and personally.

*"The education I received laid a solid foundation and gave me a real head start when I transferred to complete my undergraduate degree. The core principles taught in the program were incredibly relevant and practical. I'm just incredibly grateful for my time at Barton. It was the place that gave me my start—not just academically, but personally and professionally."*

– Emmy Kempke | Barton Accounting Graduate



## TEXTBOOK FREEDOM to Support Student Success

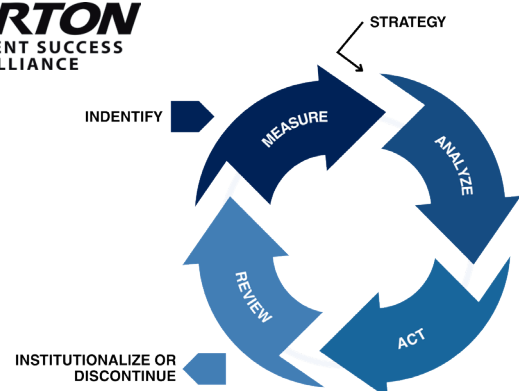
The Low-Cost Degree Pathway using Open Educational Resources (OER) brings expanded accessibility to Barton students. With this pathway, students can choose courses developed using OER resources and other low-cost course materials. Following the pathway, each course will use materials that are \$50 or less, often at no cost to the student.

Barton currently offers **245 OER-certified courses** amassing \$2.8 million in student savings! These courses, primarily through Barton Online, utilize the low-cost pathway to complete an associate of science, arts, or general studies degree.

## STUDENT SUCCESS ALLIANCE

The Student Success Alliance is an institutional team that supports the success of students at Barton through the coordination of data-driven processes. For more information, visit: [bartonccc.edu/about/student-success](https://bartonccc.edu/about/student-success).

**BARTON**  
STUDENT SUCCESS  
ALLIANCE





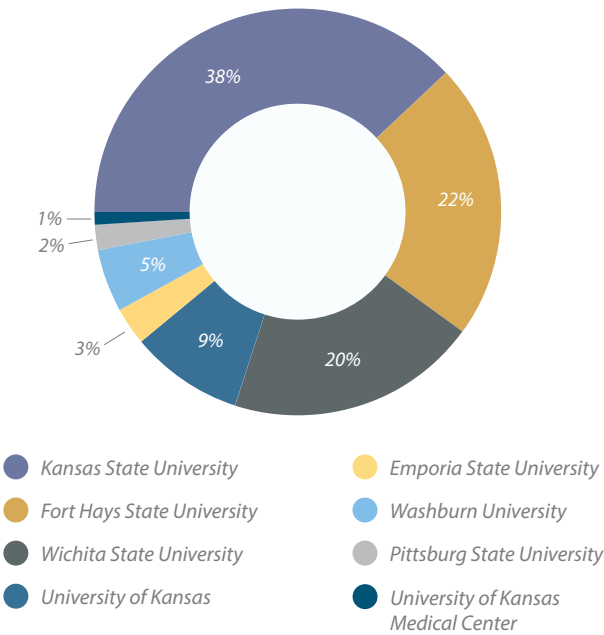
“During my time as a Barton Cougar, I enjoyed being active on campus and served as a Student Ambassador, which helped build my confidence and leadership skills. Now thriving at K-State, I’m grateful to continue progressing toward my goals by combining my schedule with Barton’s affordable, flexible online classes—and I love staying connected to Barton as I move forward in my academic journey.”

– Dakota Aumiller | Barton Communications Graduate



WHERE ARE OUR STUDENTS NOW?

The chart below represents the Kansas four-year institutions Barton students transferred to in the Fall of 2024.



HOW ARE OUR STUDENTS DOING?

This chart shows how Barton students who transferred to state or public universities are performing relative to students who transferred from the other Kansas community colleges.

STATE OR PUBLIC UNIVERSITIES	BARTON STUDENT AVERAGE GPA	OTHER KANSAS COMMUNITY COLLEGE AVERAGE GPA
EMPORIA STATE UNIVERSITY	3.32	3.33
FORT HAYS STATE UNIVERSITY	3.43	3.28
KANSAS STATE UNIVERSITY	3.33	3.26
PITTSBURG STATE UNIVERSITY	3.33	3.36
UNIVERSITY OF KANSAS	3.48	3.22
WASHBURN UNIVERSITY	3.32	3.16
WICHITA STATE UNIVERSITY	3.41	3.02



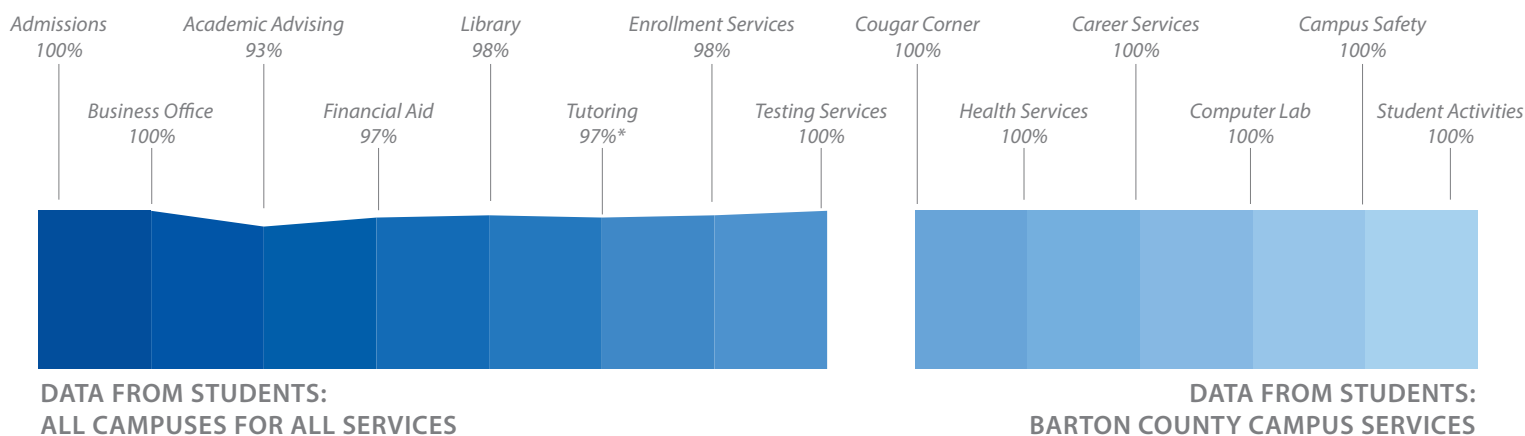
## END 4: BARTON EXPERIENCE

*Student and employee feedback will assess the impact of faculty and staff and the College climate.*

- Student and employee feedback will be documented through surveys and other report mechanisms.
- The College will assess student/employee feedback and use the data to make decisions for improvement.
- Feedback will reflect a cross-representation of the members of the Barton community.

## STUDENT EXPERIENCE SURVEY RESULTS FALL 2024

This graph represents the percentage of Barton students who used student services and rated their experience as adequate, good, or rewarding.



### AWARD-WINNING LEADERSHIP STRENGTHENS MENTAL HEALTH SERVICES AT BARTON

Barton's commitment to student well-being continues to shine as Director of Counseling Services Jakki Maser was named the **Kansas Counseling Association's Counselor of the Year**.

With 19 years in mental health and over a decade leading Cougar Counseling & Psychological Services, Jakki has strengthened **Barton's culture of wellness** through compassionate care and innovative programs. Cougar Counseling offers free, confidential support for students facing stress, anxiety, depression, academic challenges, or personal issues—along with canine-assisted therapy from Luna, Barton's therapy dog.

The recognition of Jakki as Counselor of the Year serves as a powerful reminder of the impact community colleges have in supporting student success, both academically and emotionally.

**This award reaffirms the ripple effect of promoting mental wellness across campus. It inspires me to keep helping students discover their strength and create meaningful change.**

*- Jakki Maser, Director of Counseling Services*





1. John Hamilton Ceramics Workshop
2. Family Day at the Gallery
3. Dr. Garstecki Reads to Students
4. Haunting on the Hill
5. Community Music School
6. The Nutcracker for the Golden Belt
7. McKown Masquerade Ball
8. Cybersecurity Summer Camp
9. Wheels and Squeals
10. Athletes Visit Grade Schools



## END 5: REGIONAL WORKFORCE NEEDS

*The College will serve as a resource for and be responsive to regional workforce needs.*

- The College will identify strategies to address current and future needs.
- The College will allocate appropriate resources to successfully address workforce needs.
- The College will actively engage with business and industry partners to effectively address workforce needs.
- The College will develop partnerships and be a leader in economic development.



### BARTON AND HUTCHINSON CC PARTNER TO ADDRESS RESPIRATORY CARE WORKFORCE SHORTAGE



Barton Community College announced a new partnership with Hutchinson Community College to expand access to respiratory care education and help meet a critical workforce need in central Kansas.

The two institutions recently signed a Memorandum of Understanding creating a clear pathway for Barton students to enter the respiratory care field. Barton's Dean of Workforce Training & Community Education Dr. Kathy

Kottas said the initiative was sparked by conversations with healthcare providers across Barton's nine-hospital service area. Many reported a large portion of their respiratory care staff nearing retirement and expressed an urgent need for trained professionals.

Barton President Dr. Marcus Garstecki emphasized the strengths community colleges bring to partnerships like this. "One thing we know about community colleges is how flexible we are, how adaptable we are, and how quickly we can meet the needs of our industry partners and our students," he said. "Through collaboration, openness, and a willingness to find creative solutions, this partnership became a reality."

### BARTON ALUM RETURNS TO HOMETOWN TO TEACH

Courtney Cook always knew she wanted to teach, and now she's living her dream as a first-grade teacher in her hometown of Ellinwood. She credits Barton's supportive instructors, small class sizes, and affordable start for preparing her to transfer seamlessly to Fort Hays State University.

**"Barton built a strong foundation for me. When I got to Fort Hays State University, I was very well prepared when it came to background knowledge in my career path. I loved that the class sizes were smaller. I enjoyed getting to know each of the instructors, and the instructors made an effort to get to know the students."**

– Courtney Cook | Barton Elementary Education Graduate



(Photo Courtesy of Chelsea Mitchell Photography)

### LOCAL HIGH SCHOOL STUDENT COMPLETES BARTON EMT PROGRAM; WORKS FOR GREAT BEND FIRE AND EMS

Great Bend High School student Trey Milsap took a tour of the Great Bend Fire Station as a child, which left him fascinated with the world of emergency response, and he is now working as a part-time firefighter for the Great Bend Fire and EMS Department all before graduating high school.

Before focusing on firefighting, Milsap explored law enforcement and EMT work through local ride-alongs. After helping extinguish a small grass fire during one of those experiences, he knew firefighting was his calling. He enrolled in Barton's one-semester EMT certificate program, made affordable through the state's Excel in CTE Initiative, which offers tuition-free technical courses to Kansas high school students. After high school, he plans to work full-time for the Great Bend Fire Department.

## BARTON AND PRATT CC CONTINUE PARTNERSHIP, OFFERING NURSING EDUCATION IN PRATT

Dr. Marcus Garstecki, President of Barton Community College, and Pratt Community College President Dr. Michael Calvert signed a continuing agreement for Barton to provide nursing education in the Pratt area. Others present were representatives from local and state government, the College’s Board of Trustees, administration, staff, and students.

The partnership focuses on healthcare training and providing vital services to the region. Dr. Garstecki said “supporting our local and regional healthcare facilities is essential for growth in rural areas. I believe there are three pillars to keeping rural communities growing and thriving: education, healthcare, and a strong workforce. What is most exciting about this partnership is that it covers all three of those pillars.”



## WORKFORCE ADVISORY BOARDS

Barton partners with more than 700 businesses and organizations. Many partners serve on advisory boards, which offer guidance to Barton instructors and leaders to keep programs relevant and effective. Below is a list of Barton’s workforce advisory boards:

ADULT HEALTHCARE	HAZARDOUS MATERIALS MANAGEMENT
AG MECHANICS - TOP TECH	INFORMATION TECHNOLOGY
AGRICULTURE	MEDICAL SUPPORT PROGRAMS (MA, MC, MAT)
BUSINESS	MEDICAL LABORATORY TECHNICIAN
CONSTRUCTION TECHNOLOGY	NATURAL GAS
CRIMINAL JUSTICE	NURSING
DIETARY	OCCUPATIONAL SAFETY & HEALTH
EARLY CHILDHOOD	PHARMACY TECHNICIAN
EDUCATION	PLUMBING
EMERGENCY MANAGEMENT/HOMELAND SECURITY	SCALES TECHNICIAN
EMERGENCY SERVICE EDUCATION	WELDING
FORT RILEY MILITARY PROGRAMS	



## INVESTING IN THE FUTURE OF AGRICULTURE AND SKILLED TRADES

Barton’s newly constructed Agriculture and Transportation Complex is a dynamic facility expanding learning opportunities and strengthening workforce training in high-demand fields. Powered by community partnerships, the facility features modern classrooms and hands-on training spaces for Barton’s agriculture programs.

The project was supported by a 1:1 matching grant through federal stimulus funds from the American Rescue Plan Act, awarded by the Kansas Department of Commerce. Additional support was provided through private donations and 60% state tax credits approved for capital improvements at Kansas community and technical colleges.

A significant leadership gift from American Plains Co-op, and a matching contribution from another partner, supported the construction of the new facility. The funds will also expand hands-on learning and career pathways for Barton’s agriculture students for years to come.



# FOUNDATION UPDATE

## MISSION

We inspire, connect, and support donors and friends of Barton Community College, strengthening the bond between the community and student success.

## VISION

Fostering a culture of philanthropy that supports student learning and elevates the College as a premier leader in higher education.

## 2025-2026 BARTON FOUNDATION BOARD OF DIRECTORS



Nancy Sundahl  
*Chair*



Sonya Rein  
*1st Vice Chair*



Brian Carlton  
*2nd Vice Chair*



Jay Luerman  
*Immediate Past Chair*



Wayne DeWerff



Nicci Henderson



Mandy Hoffman



Tarynn Kirmer



Cari Ringwald



Dennis Sherman



Brad Shirer



Krista Smith



Kenny Vink

## MISSION IN ACTION

We take our mission seriously - and we fulfill it with the generosity of donors from inside and outside our campuses. Donors come in all shapes and sizes and every dollar helps us do great things this year including:

### \$253,227

awarded in scholarship funds to Barton students.

### \$929,936

awarded in program and facility enhancements across all Barton campuses.

### \$1,555,920

fundraised through the generosity of 1,369 donors.







## DISTINGUISHED SERVICE AWARD

The Barton Community College Foundation presented the 2025 Distinguished Service Award to Dr. Perry and Krista Smith, whose long-standing dedication has greatly enriched Barton and the Foundation. Since 1980, the Smiths have been active supporters, volunteers, and leaders. Perry served as team physician and Sports Medicine supervisor for four decades, providing care to student-athletes and serving on the Nursing Advisory Board. Krista taught Rehab Aide classes, chaired the Foundation Board, and co-chaired the Big Benefit Auction. Together, they have been steadfast supporters of Barton events and programs, guided by their belief in the College's lasting impact on students and the community. Their service, leadership, and generosity reflect the spirit of the Distinguished Service Award and continue to strengthen Barton's mission.

## OLD BILL HONORARIUM

In 2025, the Foundation recognized Marian DeWerff with the "Old Bill Honorarium." Marian and her late husband, Vernon, founders of Ell-Bar Farms in Ellinwood, have been steadfast supporters of Barton for decades through both generous giving and personal service. She served on the Foundation Board of Directors from 2013 to 2019 and has sponsored students to help them achieve their educational goals. Guided by her faith and commitment to caring for others, Marian continues to share her blessings through action. "You are not given so you can have, you're given so that you can share," she said. Her generosity and spirit reflect the true meaning of the Old Bill Honorarium and its legacy of supporting Barton students.



## 46TH ANNUAL BIG BENEFIT AUCTION

234 attendees raised over \$65,000, including over \$19,000 for scholarships in honor of Marian DeWerff.



## 15TH ANNUAL SPORTING CLAY SHOOT

202 shooters raised \$21,000 for Faculty Mini Grants.



## EMPLOYEE GIVING CAMPAIGN

Over \$13,950 raised by employees for causes across our campuses.



## DISTINGUISHED ALUMNI AWARD

Barton Community College honored Dennis and Jann Sherman with the inaugural Distinguished Alumni Award. The Shermans attended Barton from 1970 to 1972 and have remained strong advocates for the College and community. Dennis built a successful career as a pharmacist and financial advisor, founding Sherman Financial, while Jann taught mathematics at Barton for more than 15 years. Active volunteers and dedicated supporters of Barton programs, they continue to give their time and resources to strengthen the College's mission. Their lifelong commitment to education and service reflects the true spirit of Barton alumni.

## END 6: BARTON SERVICES AND REGIONAL LOCATIONS

*The College Mission will be supported by the strategic development of Barton service area and regional locations.*

- Service area and regional locations will be compatible to the institutional mission of the College.
- Service area and regional locations will be in accordance to available resources.
- Service area and regional locations will operate efficiently to maximize revenues and minimize expenses.
- Service area and regional locations will provide appropriate levels of student learning services based on enrollment.



### ALUMNI TESTIMONIAL

"Barton Community College is extremely military-friendly due to its extensive experience working with military personnel. The entire staff knows the lifestyle and what to expect and is more than open to working with a military schedule. This helped me choose Barton because I knew no matter what phase of training I was in, I wouldn't have to worry as much as I might have to somewhere else, where the military life is like a foreign language to them. Barton is an excellent option for anyone seeking a degree or certificate, especially those who are active duty or have a demanding lifestyle."

– Isaias Hernandez | Barton Fort Riley Graduate

### ALUMNI TESTIMONIAL

"...My focus on a career in the safety field worked out well for me as Barton offers OSHA classes and an Emergency Management/Homeland Security degree. I work in the safety industry currently...My ultimate objective is to pass my Certified Safety Professional exam and submit my application to the Board of CSPs. For people who want to advance their careers and professional growth, Barton is a fantastic place to start."

– Timothy Sifuentes | Barton Emergency Management & OSHA Graduate



## MILITARY-AFFILIATED STUDENT POPULATION

The percentage below represents the number of students who are Active Service Members, Veterans, and Dependents.



**34%**  
Military-Affiliated

Total Student Population

## BARTON COMMUNITY COLLEGE EARNS 2025-2026 MILITARY FRIENDLY® SCHOOL DESIGNATION

Barton Community College has been named a 2025-2026 Military Friendly® School by Viqtory, a designation that recognizes the College's ongoing commitment to supporting military-affiliated students.

The College is proud to continue serving military-affiliated students, whether active-duty, veterans, or family members.

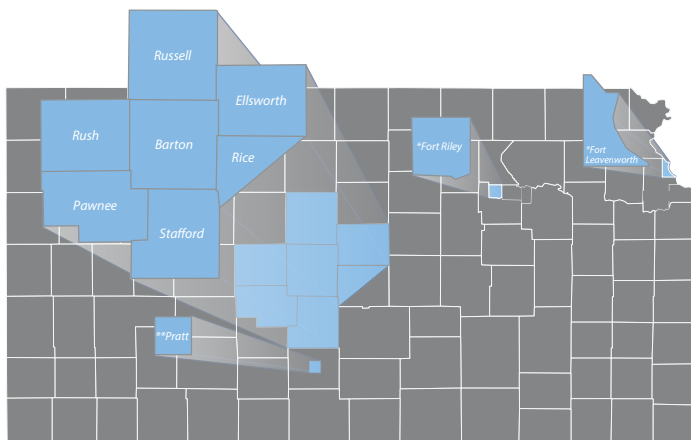
"We remain committed to offering flexible programs, dedicated support services, and a learning environment that understands and meets the unique needs of military learners."

– Barton President Dr. Marcus Garstecki





## BARTON'S SERVICE AREA AND REGIONAL LOCATIONS



\*Agreement with military to offer classes and training at Fort Riley, Fort Leavenworth and Grandview Plaza.

\*\*Barton and Pratt Community College Nursing Partnership



## BARTON TRAINING ANYWHERE

Barton's Grandview Plaza campus provides comprehensive Hazardous Materials Management, Environmental Health, and Occupational Safety and Health Administration (OSHA) training services to business, industry, and governmental entities. Each program is carefully designed to address the specific operational needs and regulatory requirements of the organization, ensuring both relevance and effectiveness. Training can be delivered nationwide through multiple platforms—including in-person, LiveOnline, and /or a hybrid model of instruction—offering maximum flexibility to meet the diverse needs of our partners.



## GREAT PLAINS OSHA EDUCATION CENTER CONSORTIUM MEMBER

The Great Plains OSHA Education Center (GPOEC) Consortium consist of Barton Community College, Metropolitan Community College (Lead Organization), and Saint Louis University. GPOEC provides OSHA training to Region VII, consisting of Nebraska, Iowa, Missouri, and Kansas. Barton Community College is one of only 37 authorized OSHA Training Institute Education Centers (OTIEC) in the United States and is the only OTIEC in the state of Kansas. This nationally recognized designation enables Barton to provide OSHA training throughout the State of Kansas and Region VII.



## END 7: STRATEGIC PLANNING

*The College mission will be supported by strategic planning emphasis.*

- The institutional mission of the College will be supported by strategic planning goals and objectives.
- Accreditation requirements of the Higher Learning Commission will be satisfied through the development and implementation of strategic planning goals and objectives.
- Kansas Board of Regents policies and mission will be satisfied through the development and implementation of strategic planning goals and objectives.
- Strategic planning goals and objectives shall be measurable in order to demonstrate their effectiveness and to provide accountability to the public.

### MESSAGE FROM THE PRESIDENT

"I am pleased to present Barton Community College's 2025-2028 strategic plan. This plan will guide Barton's continued tradition of excellence over the next several years. Throughout the planning process, the College's mission was at the forefront of each decision. Colleges are facing challenges today unlike any other time in our history. Our strategic plan provides a very intentional path forward to help us navigate these challenges, continuing to provide a quality education and support students as they pursue their goals. As a result, we will prepare students for successful transfer or career opportunities, while enhancing economic development in Barton County, our seven-county service area, and throughout Kansas."

*Marcus Baustechi*

### STRATEGIC GOALS

**one**

Advance student entry, reentry, retention, and completion strategies.

**two**

Foster excellence in teaching and learning.

**three**

Strengthen partnerships and promote community engagement.

**four**

Ensure a welcoming experience.

**five**

Optimize operational practices.

## END 8: CONTINGENCY PLANNING

*The President will make recommendations to the Board of Trustees on resource allocation due to changing educational priorities; shifting enrollment patterns; lack of funds; and/or the requirements of legally imposed mandates. This may result in adjustments of operational procedures for the purpose of:*

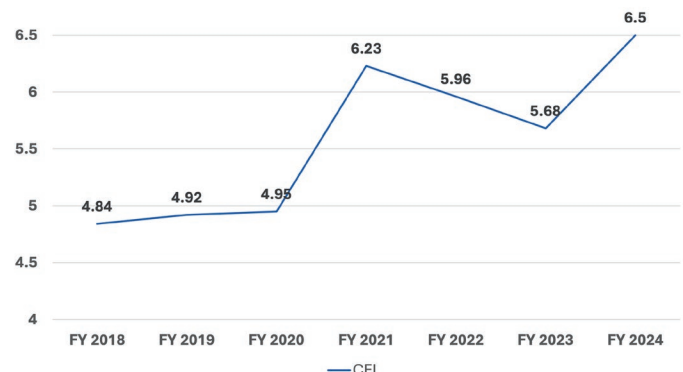
- Sustaining College financial viability.
- Maintaining program integrity.
- Enhancement, addition, reduction, or discontinuance of academic, vocational-technical, co-curricular programs or other College services.
- Reallocation of other resources to internal and external College constituencies.

The Composite Financial Index gives a picture of the financial health of the institution at a point in time each fiscal year. The index is derived from the values of four component ratios:

1. **Primary Reserve:** a measure of the level of financial flexibility.
2. **Viability:** a measure of the organization's ability to cover debt with available resources.
3. **Return on Net Assets:** a measure of overall asset return and performance.
4. **Net Income Ratio:** a measure of the operating performance.

\*A CFI score of 3 is the threshold of institutional financial health.

### COMPOSITE FINANCIAL INDEX (5.5)





# SHAFER ART GALLERY UPDATE

## DIRECTOR'S NOTE

With Barton's new College leadership joining us this year, the Shafer Art Gallery embraced fresh perspectives, creative partnerships, and meaningful moments that brought people together through art. The year offered times of quiet reflection, lively engagement, and thoughtful collaboration, making the gallery a space of inspiration and connection for all.

We hosted seven exhibitions, including community favorites such as *Friends and Acquaintances*, *Vortex*, and *Bart Art*, along with solo shows by Rachel Curtis and Jessie Rasche. Jessie also led a painting workshop and generously donated one of her works to our collection. Another highlight was *Executive Collection*, a permanent collection exhibition curated by Barton's new President, Dr. Marcus Garstecki, and his wife, Dr. Kacie Garstecki, our first Library Ambassador, strengthening ties between the gallery and College leadership.

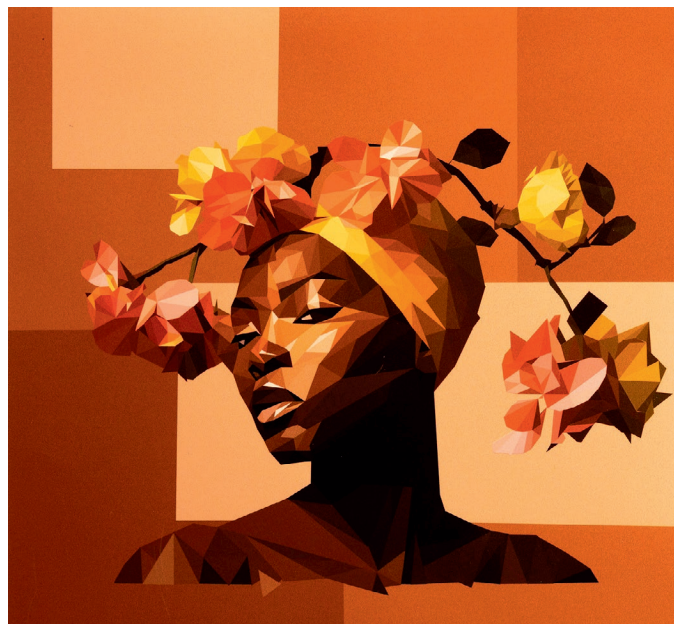
Our events brought creativity to life for all ages. *Family Day* welcomed nearly 100 visitors, featuring art activities from the gallery, Barton departments, and local businesses. *Collector's Edition* invited guests to explore unique treasures, including a Japanese friendship doll, taxidermy animals, quilts, postcards, scale model cars, and artworks from local collectors. The *Bill McKown Masquerade Ball*, held alongside *Friends and Acquaintances*, filled the gallery with art, music, and ghostly costumes, while the *Ornament Sale* brought seasonal cheer. The *Glenn and Elaine Mull Art Cart* continued to inspire creativity across the region, and Barton's Communication class, taught by Dr. Brandon Steinert, took over our social media with fresh, engaging content that reached new audiences.

Looking ahead, we are preparing to host the 2025 Kansas Museums Association Conference this November, showcasing Barton and the Shafer Art Gallery to museum professionals from across the state. On the collections side, we are grateful for gifts from Dr. Jimmie and Virginia Downing, as well as works by Phil Jacobson, Glenn Zwegardt, and Oscar Larmer (donated by his family), which continue to enrich our collection and strengthen the legacy of art at Barton.

Thank you for sharing in moments of curiosity, creativity, and reflection this year. Your support transforms Shafer Art Gallery into more than just a gallery; it is a living space of engagement, conversation, and connection. We look forward to welcoming you back soon.



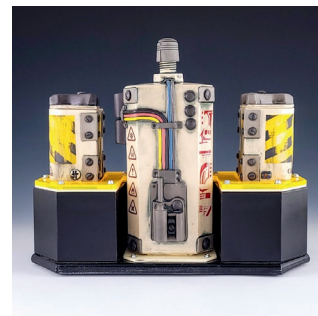
## EXHIBIT HIGHLIGHTS



▲  
Vortex Day: *Floral Reverie* by Kendra Brasuel, Larned High School student



▲  
All of the Above: *Elsa* by Rachel Curtis



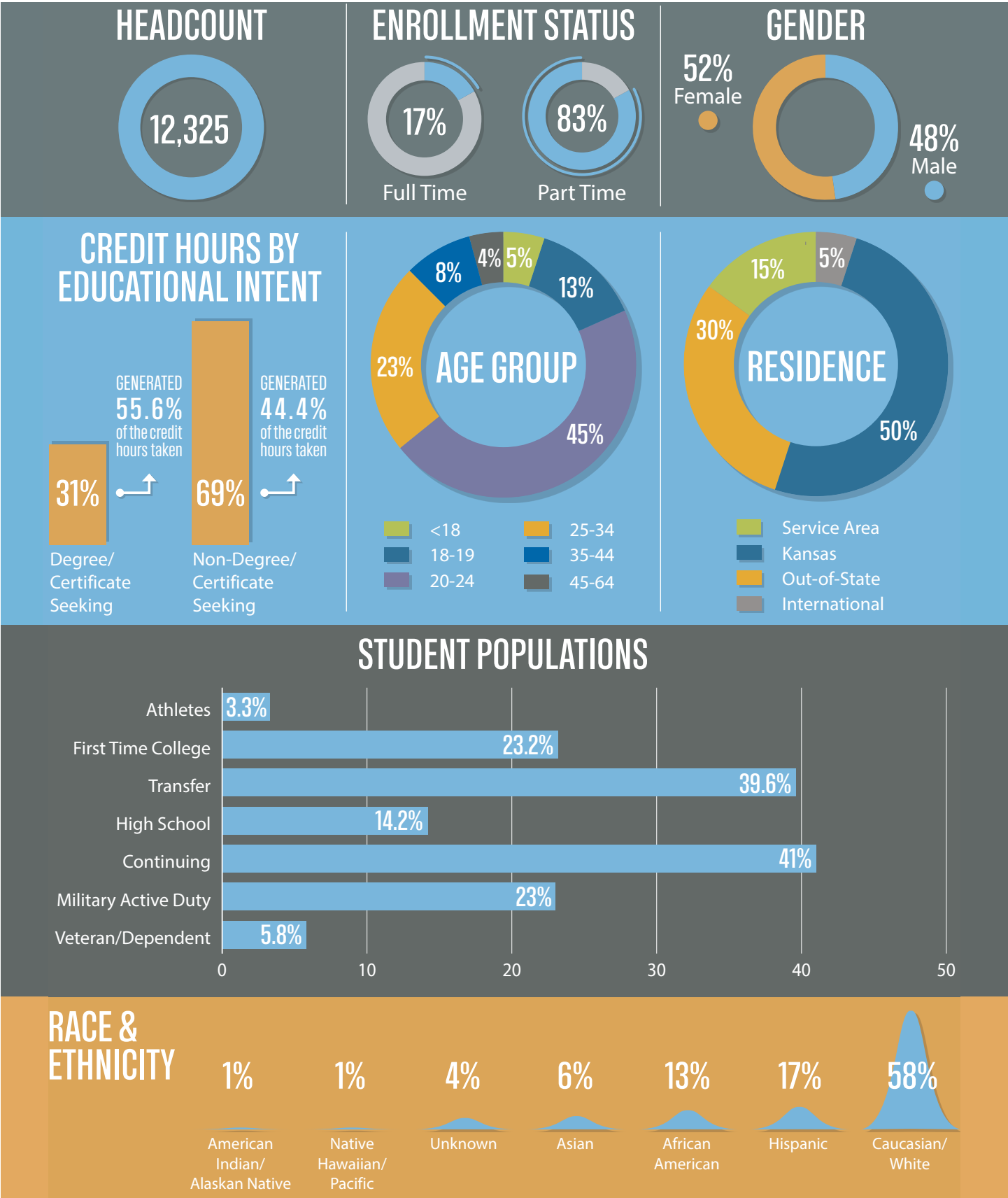
▲  
Bart Art: *Galactica Fuel Station* by John Hamilton, guest judge

Sunlight and Brushstrokes:  
Artist Jesse Rasche gave two technique workshops

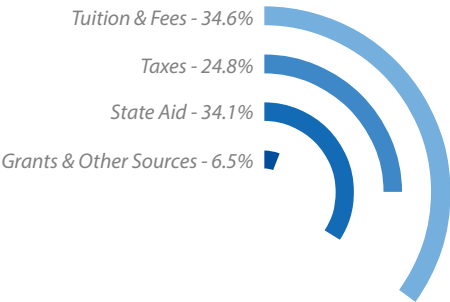


# BARTON BY THE NUMBERS

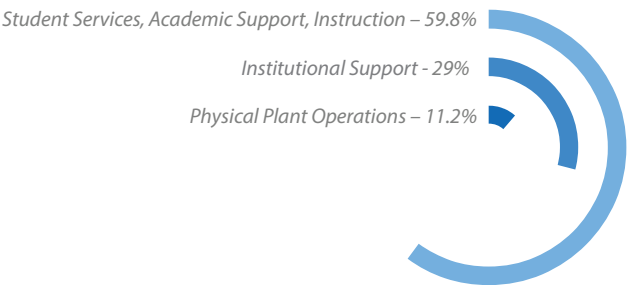
Academic Year 2024-2025



2024-2025 REVENUE



2024-2025 EXPENDITURES



The charts above show Barton’s revenue sources and expenditures for Fiscal Year 2025. Previously, Barton maintained each of the three primary revenue sources at about a third of the total. Reduced support from state aid has rendered that model unsustainable. The Board of Trustees prioritizes keeping the local tax burden low; however, this means the College must rely more on tuition and fees to support operations.

\$1,767,454

FINANCIAL AID FOR BARTON  
COUNTY RESIDENTS

STATE AND FEDERAL GRANTS  
BROUGHT INTO BARTON COUNTY

\$2,652,925

\$17,539,509

SALARIES & BENEFITS TO  
BARTON COUNTY RESIDENTS

**BARTON’S STATE RANKING**

Academic year 2024-2025

Johnson County CC - 26,183

**Barton CC - 12,325**

Butler CC - 9,527

Hutchinson CC - 7,426

Kansas City Kansas CC - 6,946

Highland CC - 3,599

Cowley CC- 3,187

Allen CC - 2,961

Garden City CC - 2,816

Seward County CC - 2,684

Cloud County CC - 2,365

Neosho County CC- 2,359

Colby CC- 2,272

Dodge City CC- 2,251

Pratt CC - 2,129

Labette CC - 1,952

Fort Scott CC - 1,867

Coffeyville CC - 1,823

Independence CC - 988

*\*Based on Community College unduplicated headcount.*

**LOCAL TAXPAYERS BENEFIT FROM BARTON**

*\*Based on a model vetted and approved by the Docking Institute 2023 Report. Academic Year 2024-2025.*

THE COLLEGE’S  
ECONOMIC IMPACT

\$30  
MILLION

OR A RETURN  
ON INVESTMENT  
OF ABOUT

\$2.05

FOR EVERY  
BARTON COUNTY  
TAX DOLLAR

229

FULL-TIME EMPLOYEES LIVING IN BARTON COUNTY

119

PART-TIME EMPLOYEES LIVING IN BARTON COUNTY



HOME OF  
60 NATIONAL  
CHAMPIONSHIPS

# BARTON ATHLETICS

## HIGHLIGHTS



### BARTON ATHLETICS CONTINUES TRADITION OF EXCELLENCE ON AND OFF THE FIELD

A blend of athletic and academic success defined another standout year for Barton Community College Athletics, as Cougar programs continued to excel on and off the playing surface.

A trio of national runner-up team finishes among six Top-5 placings led the way for another exceptional showing at the national level during the 2024-25 season. The Cougars placed inside the Top-4 of the annual Daktronics Scholarship Division standings for the eighth consecutive year, while also earning a 7th-place overall finish in the LEARFIELD Directors' Cup, marking the sixth straight year inside the national Top-7.

Academic excellence remained a cornerstone of Barton's success, with 21 athletic teams recognized by the NJCAA for their classroom achievements. The department's 22 NJCAA-reporting teams combined for a 3.29 cumulative GPA, with 11 teams placing among their sport's national Top-20. Men's bowling led the way at No. 4 nationally, followed by wrestling and women's golf each earning 5th-place rankings.

Adding to those academic accolades, Barton student-athletes also captured six additional prestigious campus honors, including both of the 2025 Outstanding Barton Graduate awards, while donating over 4,600 hours of community service during the academic year.

With 22 varsity sports, as well as eSports, cheer and dance, and a student athletic training program—plus the upcoming addition of women's wrestling—Barton Athletics continues to expand opportunities for student success in competition, the classroom, and beyond.

For more information, visit [BartonSports.com](https://BartonSports.com).

### ACADEMIC EXCELLENCE

40

NJCAA  
FIRST  
TEAM  
(4.0 GPA)

33

NJCAA  
SECOND  
TEAM  
(3.8-3.99 GPA)

32

NJCAA  
THIRD  
TEAM  
(3.6-3.79 GPA)

47%

STUDENT-ATHLETES  
EARNED NJCAA  
ALL-AMERICAN HONORS

147

COUGARS RECOGNIZED  
NATIONAL/KJCCC AWARDS

SCHOLARSHIP  
ATHLETES OF THE YEAR

2