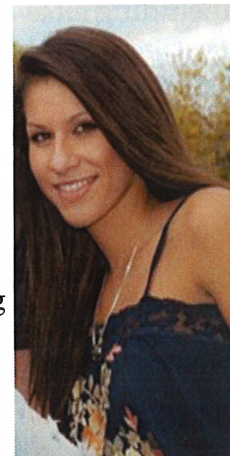


Central Kansas Educational Opportunity Center



Participant of the Quarter: Destiny Pannell



Our Participant of the Quarter is Destiny Pannell. Destiny is originally from Broomfield, Colorado, but moved to Junction City, Kansas when her husband was stationed at Fort Riley. She started taking classes at Barton Community College’s Fort Riley campus where she was referred to CKEOC for help with securing funding for her education. Destiny has since received her Associates of Science from Barton and has started taking classes with Southwestern College towards her Bachelor’s in Business Administration.

Over the past three years, Destiny has taken advantage of EOC’s services, including assistance with completing the FAFSA for Pell Grants, and help with the financial verification process. Last year when her school asked her to produce a tax transcript to receive her financial aid, she was concerned about the time it would take her to get one. When she called us to ask about it, she was surprised and thrilled to learn one had been requested at her last appointment and it was on file. She was happy she did not have to worry about a delay in receiving her award. When asked how CKEOC has been able to assist her with achieving her goals, Destiny replied, “CKEOC has given me the resources and knowledge that I need to succeed.”

As Destiny enters her senior year this fall she reflected on her college experiences so far: “it is one step closer to my goal of having my career. (My education) helped me gain the knowledge and skills I need to achieve success, and allowed me to meet some great people following the same path.” Her ultimate goal is to use the education and knowledge she received in college to get into pharmaceutical sales and excel in the business side of the medical field.”

In her spare time, Destiny likes to spend time with her husband, who was her high school sweetheart, and her two crazy dogs. They enjoy CrossFit, being outdoors, going out with friends, and traveling back to Colorado to be with family and friends.

March – May 2013

Inside this issue:

GED Changes	2
Questions and Answers	3
GED Orientations	5
ACT Test	5
CKEOC Staff and Locations	6
About CKEOC	6



*Sate Scholarship
Deadline for
FAFSA is
April 1, 2013*



Changes With Barton Community College Adult Education Program

The Barton Community College Adult Basic Education Center is now part of the Workforce Training and Community Education Division at Barton Community College. The Barton Community College ABE provides services to a variety of individuals at different locations, including sites at downtown Great Bend, Fort Riley, Ellsworth Correctional Facility, and Larned Correctional Mental Health Facility. Mary Foley, Executive Director of Workforce Training and Community Education, oversees the GED program. She would like to remind individuals

Whatever the mind can conceive
and believe, the mind can achieve.

Napoleon Hill



interested in earning their GED's this year is the time to do it. Starting January 1, 2014, the GED test will be on-line, the fee will increase, and the format of the test will be more complicated. In addition, she oversees the Agriculture, Automotive, Early Childhood, Natural Gas Technology, and Case-New Holland programs at the college. She stated, "by moving the college's adult education program to our division, there will be a better transition for the GED students into the workforce."

Mary joined the Barton Community College staff in October and stated, "the most challenging part is being new and learning how everything works, but the people are amazing and it is different every day so it is not boring." She graduated from Valley Falls High School in Northeast Kansas and received her Bachelor's degree in Apparel and Textile Marketing from Kansas State University. Prior to BCC, she worked at J. C. Penney for 20 years. Her family still lives in Northeast Kansas and she enjoys knitting in her spare time. When posed this question, "What is something people do not know about you?" She replied, "I am training to become a jazzercise instructor."



My Barton Portal



Students at Barton Community College have a variety of electronic communication options, which include PAWS, Cougar E-mail, BARTonline, Cougar Text Messaging and Alert System and the latest is My Barton Portal. Students can sign onto this latest technology to ensure they are apprised of their personal educational and financial aid status. Students can log into their accounts 24/7, which provides information such as class schedules, grades, academic progress, enrolling online for most classes, make payments, view an unofficial transcript, and their financial account. For students to access their Cougar E-Mail accounts they must log into the My Barton Portal to get their bartoncougars.org email. Through this email account, students receive important information about financial aid, advisement, enrolling, billing, and communication with their instructors. Their portal user name is their firstname.lastname and the password they use is their password for their PAWS account. For students to sign into their PAWS account it is their Barton ID number and pin number they set up the first time they accessed their PAWS account. If they encounter any problems logging onto the portal, they may contact Enrollment Services at Barton Community College for assistance or contact CKEOC office and we will refer to the right contact person.

Questions and Answers

Q. How do I drop a class?

A. Before you drop a class-STOP and THINK!! If you receive Financial Aid, will dropping the class affect your financial aid status? If you need twelve hours or more will dropping the class affect your eligibility? If you are an athlete, will dropping the affect your eligibility? Have you talked to your instructor about dropping the class? Perhaps thins are not as bad as they seem. Set up appointment to talk to your instructor. Is the course you want to drop going to be offered again when you need it? Some classes are offered only one semester a year. It may be a year before you can re-enroll. Are you working too many hours? It may help to cut your work hours, so you will be able to do better in class. Have you tried the tutoring services in the Learning

Resource Center? Student Services provides free tutoring. Students are responsible for dropping classes and are required to visit with instructors or an advisor before dropping classes. At Barton Community College a Change-of-Schedule form may be picked up from the Admissions Office, Enrollment Services office, Advisement Center, or from your advisor. Courses dropped through the first two weeks of classes will not be recorded on a transcript. After the 20th day of classes, a "W" will be recorded for courses dropped officially, Final drop dates are published in bulletins, Student Handbooks and the Enrollment Services Office. Please check with your college for their procedure to drop a class.

Q. How do I withdraw from College?

A. If you wish to withdraw from all classes at the College for the remainder of the semester, you must secure a withdrawal form through the Enrollment Services Office or your advisor. If you are receiving financial aid you will need to meet with Financial Aid Officer. After you have returned all College equipment and books, paid all fines and fees, turned in your student ID or Activity Card, and have been cleared in every respect with the college, you will be cleared for withdrawal. If you fail to comply with the above procedure, you will not be recommended to any other college or university, you will not be eligible to receive refunds of such fees or deposits and outstanding debts may be subject to legal actions. Again check with your college for their procedure to withdraw from college.

Barton Community College Student Handbook 2012-13

Don't Quit by Clinton Howell

When things go wrong, as they sometimes will,
When the road you're trudging seems all uphill.
When the funds are low and the debts are high,
And you want to smile, but you have to sigh,
When care is pressing you down a bit,
Rest if you must, but don't you quit.

Life is queer with its twists and turns
As every one of us sometimes learns,
And many failure turns about,



When he might have won had he stuck it out;
Don't give up though the pace seems slow,
You may succeed with another blow.

Success is failure turned inside out,
The silver tint of the clouds of doubt,
And you never can tell how close you are,
It may be near when it seems so far;
So stick to the fight when you're hardest hit,
It's when things seem worst
That you must not quit.

Financial Aid Word Search

O D R Z R U R A T N N N U J T
 P E A E O E P E T N O F O D S
 P Z L D W P C N P I A X L S E
 O I P I L O U E T A R R T T R
 R D O Y G O R A I M Y K G U E
 T I Q I C I R R M V Z M O D T
 U S O C V T B A O H E H E E N
 N B A F S H Q I A B D P P N I
 I U P I H S R A L O H C S T T
 T S G U N S U B S I D I Z E D
 Y E S H P E D U C A T I O N S
 R Y D U T S K R O W L Y M S N
 F E D E R A L P C L E J T M A
 V F A J V E K S E A S F A F O
 W I O T I M R P S X P Z I Q L

ACCOUNT
 APPLY
 BORROWER
 EDUCATION
 ELIGIBILITY
 FAFSA
 FEDERAL

GRANT
 INTEREST
 LOANS
 OPPORTUNITY
 PELL
 RECEIVE

REGISTRATION
 REPAYMENT
 SCHOLARSHIP
 STUDENT
 SUBSIDIZED
 UNSUBSIDIZED
 WORKSTUDY

GED/ ESL Class Orientations

Don't have a high school diploma and looking to improve your lifestyle? Now is the time to think about earning your GED. Changes in the program will start January 1, 2014. DON'T wait, Start NOW!

Contact information for GED/ESL class orientation:

Fort Riley:	March 4 – 10	785-784-6066
Great Bend:	March 4 – 10	620-793-5794
Hays:	April 1	785-460-5486
Manhattan:	April 1 – 4	785-539-9009
	April 15 – 18	
Salina:	March 25 – 28	785-309-4660
Online GED	March 25- 2 8	

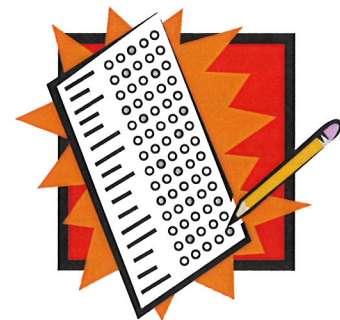
Education is the transmission of civilization .
Will Durant

ACT Exam Dates

If you are planning to attend a post-secondary college in the fall of 2013, it is not too late to take the ACT test. You may register online or by mail. The online address is www.actstudent.org and you can request a registration packet from ACT.

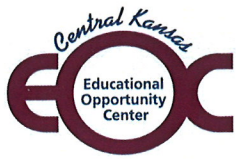
Locations for April 13 and June 8 ACT test sites are:

- Great Bend: Barton County Community College
- Hays: Fort Hays State University and Hays High School
- Manhattan: K-State University
- Russell: Russell High School
- Salina: Kansas Wesleyan University and Salina High School South



CKEOC Staff and Location

<p>Great Bend 1025 Main St 620-793-8164</p> <p>Academic Advisor Mary Dino</p> <p>Academic Advisor/Data Specialist Liz Klima</p>	<p>Project Director Susie Burt</p>	<p>Junction City 1012 A West Sixth 785-238-5200</p> <p>Coordinator/Academic Advisor Ray Kruse</p> <p>Secretary/ Data Specialists Mary Shane</p>
--	---	--



1025 Main Street
Great Bend, KS 67530

ADDRESS SERVICE REQUESTED

Non-profit Org.
U.S. Postage
PAID
Permit No. 11
Great Bend, KS

About CKEOC

The Educational Opportunity Center is 100% funded by the U.S. Department of Education and is one of the TRiO programs. TRiO began with Economic Opportunity Act of 1964, in response to the administration's War on Poverty.

TRiO programs include eight outreach and support programs targeted to help disadvantaged students progress from middle school to post-baccalaureate programs.



33 Counties Served by CKEOC

Barton, Clay, Cloud, Dickinson, Ellis, Ellsworth, Geary, Graham, Jewell, Lincoln, Marshall, Mitchell, Morris, Ness, Norton, Osborne, Ottawa, Pawnee, Phillips, Pottawatomie, Pratt, Republic, Rice, Riley, Rooks, Rush, Russell, Saline, Smith, Stafford, Trego, Wabaunsee, and Washington.