

December 2013 – February 2014

Central Kansas Educational Opportunity Center



PARTNERS IN ACTION:

CKEOC and Heartland Works WIA Youth

Recently, CKEOC and the Workforce Investment Act (WIA) Youth Program came together to assist a participant achieve her goals. In October 2012 Cireya Mays enrolled in the WIA Youth program to get help in obtaining her GED and in March of this year she started working at the Junction City Workforce center as part of the WIA Youth Program. It was while working at the Junction City workforce center when she was referred to CKEOC for services. Her time at the Junction City workforce center was a busy one, as she was balancing work, GED classes at Cloud County Community College, and also taking care of her daughter.



September and October, came with a whirlwind of excitement as many significant life events occurred in Cireya's life. On September 13th she married her husband Virgil, who is a Specialist in the Army. She graduated with her GED on September 25th, and on October 12th, she relocated to follow her husband who received orders to Fort Bliss in El Paso, Texas.

Cireya was thankful for the assistance the WIA program gave her with obtaining her GED and securing a job, but she knew that she did not want to stop there so she sought help from the CKEOC to assist her on continuing her education through college. Wanting to go into a career that would allow her to help children – specifically with those with cancer or sickle cell anemia, Cireya chose to pursue an education in nursing. Because she was going to a location she was not familiar with, and had no experience with the process of applying and attending college, she was pleased she could look toward the CKEOC for guidance in locating and applying to a school in El Paso. After going through the options, Cireya chose to study at El Paso Community College. After completing the FAFSA with help from the CKEOC and reviewing other options for paying for college, Cireya was confident that she had made the right choice.

Now that Cireya has completed her move, she has started the process of enrolling in classes and looks to start the next chapter of her education in Spring of 2014. When asked if she had anything to say about CKEOC and the services they provided she said that she would like to say "Thank you for helping me apply to college and get my financial aid together – CKEOC is Great!"

Inside this issue:

Participant of the Quarter	2
Barton CC Info	3
Barton CC Adult Educational Center	4
FAFSA Overview	5
Salina Adult Education Center	6
Educational Information	7
About CKEOC	8



Participant of the Quarter: Ruth Trahan

We are excited to have Ruth Trahan as our **Participant of the Quarter**. She was born and raised in Sublette, KS, where she graduated from Sublette High School. She attended Barton Community College in the early 1990's and accumulated approximately 35 credit hours working towards a degree in Theology. At that time, Ruth's college experience came to a halt, as she left school to take a position with Berean Christian School as a 1st and 2nd grade teacher for 10 years.

Ruth has always had a passion for holistic health. After facing some personal issues, she became interested in Essential Oils. She traveled to Kansas City to participate in the training to complete a Certificate in Raindrop Therapy, and then studied nutrition on her own, which in turn led her to Massage Therapy. So, after her children graduated from High School and left home to make their own way in the world, she decided to pursue her dream of becoming a Massage Therapist.

Ruth came to CKEOC in March of 2011. At that time Ruth had been laid off from her job and was getting assistance from the WIA (Workforce Investment ACT) program to return to school. They, in turn, referred her to us to assist with this educational endeavor. It, indeed, was a good match. Since that time, CKEOC has assisted her in

many capacities beginning with surveying her needs and came up with a career plan. It began with a campus visit to Butler Community College in Andover, assisting with the admission process, filing for financial aid, navigating the computer, and giving moral support. She stated, "The Advisors at CKEOC are fantastic. When things seemed difficult and intense, they were there encouraging and helping me every step of the way."

It has been great to see her dream unfold. Although the traveling back and forth from Great Bend to Andover seemed tiresome, she endeavored to persevere. There were times she would experience the feeling of being over-whelmed, and stated, "CKEOC kept encouraging me and supported me to see my goal completed." Ruth was inducted into the International Honor Society of Phi Theta Kappa her first semester at Butler, and received her Certificate in Massage Therapy from Butler Community College in December of 2012. With the end in sight, she will receive her Associates in Applied Science from Butler Community College in December of this year (2013).

Overall, Ruth has had a very good experience returning to college. She has enjoyed learning new things, and



said the instructors have been very helpful. As a non-traditional student, she stated that she has really enjoyed being around the younger kids.

Ruth's completion of her Massage Therapy Certificate has already benefited her. She is currently employed by The Heartland Center for Holistic Health. She stated "It's great to be able to relieve physical issues through the art of massage."

Ruth has been married to her husband, Kim, for 30 years. She has 2 adult children (Jesse and Sam), dogs (Duke, Bo, & Chip) and numerous barn cats. She enjoys gardening and sitting outside enjoying God's creation and reading. She also enjoys spending time with her family, renewing friendships and staying close with friends.



SPRING 2014

MAIN CAMPUS PLANNING CALENDAR

NOVEMBER 5

Spring 2014 Registration Begins

JANUARY 2

(No Classes/Offices Open)

JANUARY 10

Spring 2014 Registration Ends

JANUARY 13

Spring 2014 Classes Begin

JANUARY 13-17

Spring 2014 Late Registration

FORT RILEY PLANNING CALENDAR

LSEC CYCLE 2 JANUARY 6 – FEBRUARY 19

NOVEMBER 11

Active Duty Military Registration Begins

NOVEMBER 26

Open Enrollment Begins

Military Family Members & DOD Civilians

JANUARY 6

Last Day to Enroll (All)

LSEC Cycle 2 Classes Begin

COLLEGE PROGRAM CYCLE 2 JANUARY 6 – March 1

NOVEMBER 11

Open Registration Begins

JANUARY 6

Last Day to Enroll

College Program Classes Begins

EOC STAFF AVAILABLE TO ASSIST YOU WITH QUESTIONS & EOC SERVICES

Liz Klima – EOC Advisor

Ray Kruse Coordinator/Advisor



**CENTRAL KANSAS EDUCATIONAL OPPORTUNITY CENTER IS PROUD TO BE A PART OF
BARTON COMMUNITY COLLEGE WHO SUPPORTS OUR PROGRAM AND SERVES AS
OUR HOST INSTITUTION**

NON-DISCRIMINATION NOTICE:

**Barton Community College is an equal opportunity provider and employer.
Visit equal.bartonccc.edu for more information.**

BARTON COMMUNITY COLLEGE ADULT EDUCATION CENTER RECEIVES FACELIFT



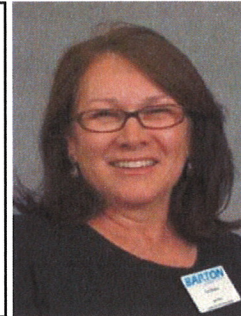
Stop by and check out the “**New Look**” at the Adult Education Center at 1025 Main in Great Bend!!

With the revised GED curriculum mandated by the State becoming effective 2014, staff at the Center and Workforce Training Division has been busy transforming office areas to accommodate the upcoming changes.

If you have questions regarding the GED Program do not hesitate to contact the Center.
PHONE: 620-793-5794
Email: maloya@bartonccc.edu

WELCOME THE NEW SECRETARY AT BCC ADULT EDUCATION CENTER

Central Kansas Educational Opportunity Center would like to welcome Teri Maloy to Barton Community College Adult Education Center. In her position as secretary for the center, her passion runs deep working with students looking to improve their lives. When she is not assisting people in obtaining their GED, she enjoys spending time with her horses, quilting and cooking and she is a culinary professional.



FAFSA OVERVIEW

If you are planning to attend a post-secondary school this Fall, remember to file your FAFSA for the 2014-15 school year. Keep in mind, if you have applied for FAFSA in the past you will still need to reapply for federal student aid every year. Also, if you are transferring to another school, make sure you add the federal school code of the school you are planning to attend to ensure financial aid is transferred as well.



An important part of the FAFSA application is determining whether the student needs to file as dependent or independent for purposes of calculating the Expected Family Contribution (EFC). If a student indicates that any of these criteria applies to him or her, he or she is classified as an independent student, even if the student is still living with his or her parent.

There are several things that can qualify a student as independent:

- being 24 years of age or older
- being married
- having children that receive more than half of their support from the student
- having been declared a ward of the court, placed in foster care or having both parents deceased after the age of 13
- being active duty in the military or a veteran with an discharge status other than dishonorable
- having been an emancipated minor
- having been placed in legal guardianship by a court
- being an unaccompanied homeless youth

The student will need his or her income tax information and W-2's and if they are married their spouse's information. If the student is filing as a dependent, they will need their parents' income tax information and W-2's as well as their own income tax information and W-2's. If the student does not meet any of the above mentioned criteria for being an independent student, the student is classified as a dependent and must include his or her parents' information on the FAFSA even if the student is not living with his or her parents. Their parents' information is required to determine eligibility for financial aid. If you are unsure of your filing status, please ask when you are making your appointment and we will assist you in determining your filing status.

Once you receive your W2's, do not delay having your taxes done. Even if you think you may not qualify for federal aid, fill out a FAFSA application, because some schools use the information from the FAFSA to determine if you qualify for additional financial aid and scholarships. The sooner you file your FAFSA, the sooner your financial aid package can be determined. When your taxes have been completed, please call our office to schedule your appointment to have your 2014-15 FAFSA completed.

Salina Adult Education Center has Moved



SAEC is now located on the south side of Salina Area Technical College campus.

Address: 2620 Centennial Road.

Website and phone number remain the same.

Phone: (785) 309-4660 Fax: 785-309-4669

Website: www.usd305.com/saec/

SAEC has been an outstanding Central Kansas Educational Opportunity partner for many years. CKEOC Academic Advisor currently provides workshops and services to SAEC GED students listed below:

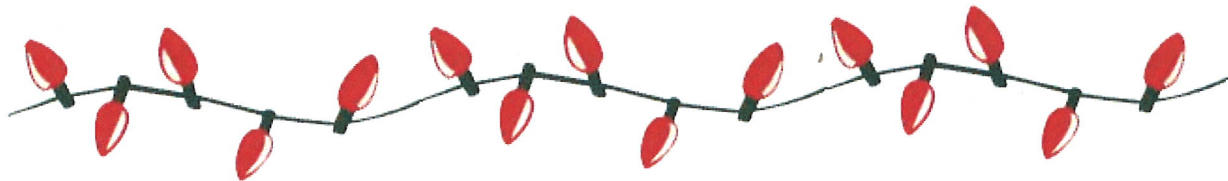
Workshops:

FOCUS 2 Career Inventory Assessment, Financial Literacy, Smart Study and Test Anxiety.

Services:

**Assistance with School and Program searches and setting Educational Goals.
Provide support with Admissions, Enrollment, and Financial Aid processes.**

CKEOC Project Director also serves as an Advisory Board Member for SAEC.



GED CLASS ORIENTATION

Contact information for GED class orientation:

BCC/Great Bend	January 6–10	620-793-5794
BCC/Fort Riley:	January 6–10	785-784-6066
Cloud CCC	January 2–3	785-238-8010
Hays:	January 6	785-460-5486
Manhattan	January 13-16 PM	785-539-9009
	January 27-30 AM	



ACT EXAM DATES

If you or someone you know are planning to attend a post-secondary college in the fall of 2014, it is time to mark your calendar for the following dates for the ACT test.

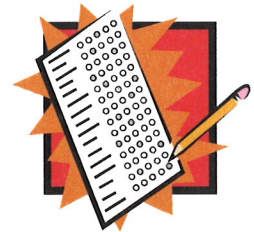
Dates for ACT tests are:

February 8, 2014

April 12, 2014

June 14, 2014

You may register online or by mail. The online address is www.actstudent.org and you can request a registration packet from ACT.



CKEOC Staff and Locations

Great Bend

1025 Main St
620-793-8164

Academic Advisor

Mary Dino

Academic Advisor/Data

Specialist

Liz Klima

Project Director

Susie Burt

Junction City

1012 A West Sixth
785-238-5200

Coordinator/Academic Advisor

Ray Kruse

Secretary/ Data Specialist

Mary Shane



1025 Main Street
Great Bend, KS 67530

ADDRESS SERVICE REQUESTED

Non-Profit Org.
U.S. Postage
PAID
Permit No. 11
Great Bend, KS

About CKEOC

The Educational Opportunity Center is 100% funded by the U.S. Department of Education and is one of the TRiO programs. TRiO began with Economic Opportunity Act of 1964, in response to the administration's War on Poverty.

TRiO programs include eight outreach and support programs targeted to help disadvantaged students progress from middle school to post-baccalaureate programs.



33 Counties Served by CKEOC

Barton	Mitchell	Rice
Clay	Morris	Riley
Cloud	Ness	Rooks
Dickerson	Norton	Rush
Ellis	Osborne	Russell
Ellsworth	Ottawa	Saline
Geary	Pawnee	Smith
Graham	Phillips	Stafford
Jewell	Pottawatomie	Trego
Lincoln	Pratt	Wabaunsee
Marshall	Republic	Washington

