

September-November 2014

# Central Kansas Educational Opportunity Center



## CKEOC Outstanding Participant: Jennifer Frise

We are excited to have Jennifer Frise as one of this month's Outstanding Participants. She was first introduced to CKEOC by one of our partners at the Great Bend One Stop Center: the WIA program. Jennifer recently had her second child and needed assistance in finishing college to become a nurse. As a result, CKEOC helped her through the whole process of going back to school which included financial aid. She appreciated her Advisor who often called to see if there was anything she could help her with. Jennifer stated that CKEOC is a great program, and "They were very supportive."

### Inside this issue:

CKEOC Outstanding Participant	2
CKEOC/LCMHS New Financial Aid Program / Barton Ft. Riley New Dean	3
AO-K	4
ACT Test Dates	5
Barton CC Info	6
GED Orientation/ CKEOC Staff and Locations	7
About CKEOC	8

Jennifer graduated with an AS degree in Nursing from Barton Community College in May of 2014. She describes her college experience as "very positive" and stated that "the nursing instructors were very helpful and taught me to become disciplined in my studies." Jennifer plans to continue on with school to get her BSN at Newman University in Wichita. She dreams of one day becoming a unit manager or a department head. She stated "I have been a single mother raising my two children alone. I was able to attend a full time nursing program, as well as work throughout my nursing school.



I think if you have a goal, no matter what your age is, you can achieve it, though it may not always be easy, as long as you keep a positive attitude." "I want to thank the CKEOC program for all their help and support, as well as Kristin and Susan with the WIA program."

Jennifer graduated from High School in 2004 at Castroville, CA, but now lives in Great Bend and is busy with her education, work, and raising her two children - Evelyn, 12 years old; and Willie, 4 years old. She works at Woodhaven Care Center in Ellinwood. In her spare time she loves to go to Zumba, cook, and spend time with her children.

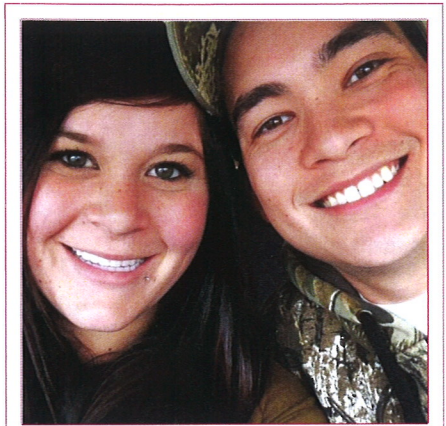




## CKEOC Outstanding Participant:

### Stephanie Byrd

We are proud to introduce Stephanie Byrd as one of this quarters Outstanding Participants. Stephanie started her post-secondary education in California where she attended California State University Stanislaus from 2005-2009 as a Biological Science major. After moving to Manhattan when her husband was stationed at Fort Riley, KS in 2013, she decided to restart her education by enrolling in classes at Barton Community College. By this time, her interests had shifted to nursing, but she didn't know how to go about realizing this goal. She recounts, "I was working in the PX on Fort Riley at the time and a friend had told me about how Ray (at CKEOC) got her started at Barton and helped with her financial aid. I called and set up an appointment that day!"



**Stephanie & Nic Byrd**

As a result of that appointment, Stephanie enrolled at Washburn University in the fall of 2013. Since that time she has completed all of the pre-requisite classes required to apply to the Washburn School of Nursing and should receive notice on whether or not she has been accepted this October. If she is accepted, she is on track to graduate with her BSN in December 2016. She plans to then become a Labor and Delivery RN or Pediatric RN while her husband returns to college to finish up his bachelor's degree. Stephanie is very pleased with her college experiences here in Kansas stating "Washburn is an incredible school. The professors and the curriculum is unlike any that I have ever seen. The professors are patient, kind, and truly invested in my success and education. Barton was also a fantastic school, however since I was planning on getting a BSN I had to transfer to achieve my goals. "

When asked to comment on how CKEOC has helped her towards achieving her educational goals, Stephanie had this to say: "The staff at CKEOC has helped me become a student again, and work towards my dream of becoming a college graduate. (Ray) was the one that suggested enrolling at Washburn to earn my BSN. He helped me with not only the paperwork side of things, but also with really figuring out what I wanted to do and what I needed to do to achieve my goals. (Ray) helped me complete my FAFSA, Barton class schedules, and then my application to Washburn University. He even attended my orientation day with me to make sure that I asked the correct questions and got all the answers I needed. "

Stephanie goes on to add "I went back to college after over 3 years of not attending, moving halfway across the country, and am succeeding in my classes. It is never too late to go back to earn your degree! "



Stephanie currently lives in Manhattan with her husband Nic, who is a soldier stationed at Fort Riley and her two dogs: Piper, a border collie/lab mix and Vikki, a miniature dachshund. In her spare time she enjoys fishing with her husband, hanging out with her friends and playing with her dogs.

## CKEOC/LCMHF New Financial Aid Program

CKEOC has been partners with LCMHF since 1998 when CKEOC received their grant and came into existence. Since the beginning of LCMHF's Homeward Bound program, CKEOC has participated quarterly in providing a presentation of services which includes financial aid information.

In March of this year, new to her position, Cindy Villarreal, Program Provider for LCMHF approached Mary Dino, CKEOC Advisor with the idea of setting aside one day a month to assist inmates interested in postsecondary education. During this day, inmates would be provided with financial aid information, and the opportunity to complete the FAFSA prior to their release.. Although much preparation precedes this service, thus far it has been a "Huge Success." Several inmates have developed a Resource Room at the prison in which they can receive assistance with searches for postsecondary education opportunities and job related information.

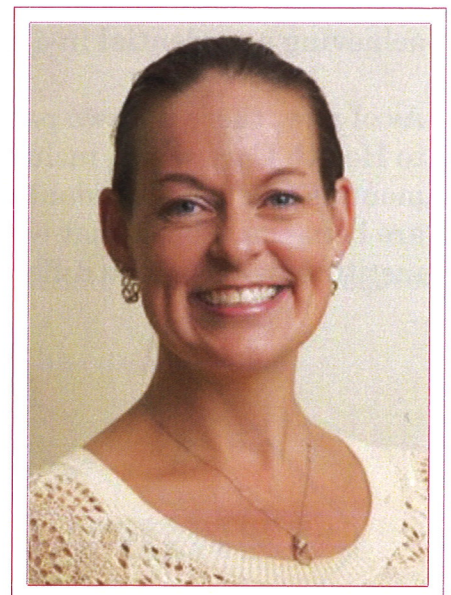
On the first day the program was implemented in March, Mary assisted 11 individuals. Since then the program has grown to the point where approximately 20 individuals are being served per visit. It has become a very fast-growing and popular program, as this is an excellent goal for inmates to set for themselves as they transition into their community. It gives them something to strive for and a positive way for them to change their lives.

## Barton Ft. Riley Welcomes New Dean

Please join EOC staff in welcoming **Ashley Arnold** as she begins her new role as Dean of Military Academic Services

The Dean of Military Academic Services administers the operational, financial, and personnel activities of the Fort Riley and Fort Leavenworth academic services locations.

Ashley begins this new assignment with academic training in International Economics (BA), Business Administration (MS), as well as doctoral work in Business Administration (ABD). She previously served as the LSEC/BSEP/GT Coordinator for Fort Riley and taught mathematics for BCC for almost four years. In addition to previous time as an instructor, she brings corporate experience in management, budgeting, and marketing to her new assignment.





## AO-K (Accelerating Opportunity Kansas) Program

The AO-K program is changing the way adult basic education is being taught by presenting opportunities for adult students to earn a post-secondary credential that can lead to a family sustaining job in a shorter amount of time. Simply put, it is about promoting self-sufficiency. The program is based on the I-BEST model which was developed in Washington State. That state showed positive results in creating a more educated workforce and Kansas is hoping to achieve similar results.

The number of adults who lack skills and a high school diploma is a statewide crisis. This deficiency creates difficulties for employers in finding qualified workers to fill skilled positions. To address this issue, the Kansas Board of Regents, in partnership with the Kansas Department of Commerce, applied for and received a grant to implement this new program in Kansas. Recently, this initiative was also supported by the Kansas Legislature. According to Chris Lemon, Coordinator of the Barton Community College Center for Adult Education, "Kansas House Bill 2506 provides a minimum of \$500,000 across the state to pay for the course costs of students without a High School Diploma who are co-enrolled in a Kansas Adult Education program and an approved AO-K career pathway. This funding source allows us to bridge the gap and help people enter training programs when federal financial aid is not an option."

The AO-K program creates an opportunity for individuals who need skill building or do not have a high school diploma or GED to work towards earning a vocational certificate. One of the greatest benefits provided by the program is students work towards two credentials simultaneously, their high school equivalency and a CTE (Career and Technical Education) credential. The program allows the presence of a secondary basic skills instructor inside the classroom to provide extra assistance and work alongside the content instructor to team teach in the CTE classroom. This allows the students to spend less time in the classroom while achieving a credential in a career pathway leading to gainful employment.

As of now, there are two pathways to choose from at Barton Community College: Introduction to Health Care which includes CNA, CMA and Medical Terminology; or Manufacturing Fundamentals where the student would receive a Manufacturing Skills Certificate. Future programs are being developed that would fall under the umbrella of the AO-K Program and other institutions may have different offerings.

Accelerating  
Opportunity  
Kansas

The logo for Accelerating Opportunity Kansas features the text "Accelerating Opportunity Kansas" in a bold, sans-serif font. The word "Accelerating" is in a golden-yellow color, "Opportunity" is in a darker yellow, and "Kansas" is in a dark blue. To the right of the word "Accelerating" is a graphic of three overlapping, stylized arrows pointing to the right, composed of small dots in shades of blue and yellow.

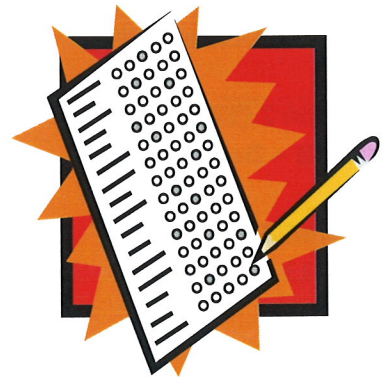


## ACT Test Dates

If you or someone you know are planning to attend a post-secondary college in the fall of 2014, it is time to mark your calendar for the following dates for the ACT test.

The following ACT test centers will provide the ACT on October 25 and December 13, 2014:

Abilene – Abilene High School  
Clay Center – Clay Center Community High School  
Concordia – Cloud County Community College  
Great Bend – Barton Community College:  
Hays – Fort Hays State University and Hays High School  
Junction City – Junction City High School  
Manhattan – Kansas State University  
Marysville – Marysville High School  
Pratt – Pratt Community College  
Russell – Russell High School  
Salina – Kansas Wesleyan University & Salina South  
Wamego – Wamego High School



The following ACT test centers will provide the ACT on October 25, 2014 only:

Manhattan – Manhattan High School  
Salina – Saint Johns Military School

You may register online or by mail. The online address is [www.actstudent.org](http://www.actstudent.org) and you can request a registration packet from ACT.







Fall 2014

MAIN CAMPUS PLANNING CALENDAR

Online Classes

Fall Session 1 (9 Weeks)  
August 11 – October 12

Fall Session 2 (17 Weeks)  
August 18 – December 14

Fall Session 3 (9 Weeks)  
October 13 – December



April 15 – August 15 – Registration

August 15 – Payment Due

August 20 – Classes Begin

August 18 – 22—Late Registration

August 29 – Last Day For Refund

FORT RILEY CAMPUS PLANNING CALENDAR

LSEC CYCLE 7 SEPTEMBER 18—OCTOBER 30

Open Enrollment Has Started and is Ongoing  
September 18th (1st Day of Class)—Last Day to Enroll (All)

COLLEGE PROGRAM CYCLE 1 OCTOBER 22 —DECEMBER 16

Check with EOC Staff for Forthcoming Enrollment Start Date  
October 22nd (1st Day of Class)—Last Day to Enroll (All)

EOC STAFF AVAILABLE TO ASSIST YOU WITH QUESTIONS & EOC SERVICES

Liz Klima – EOC Advisor

Ray Kruse Coordinator/Advisor

Mary Dino—EOC Advisor



CENTRAL KANSAS EDUCATIONAL OPPORTUNITY CENTER IS PROUD TO BE A PART OF  
BARTON COMMUNITY COLLEGE WHO SUPPORTS OUR PROGRAM AND SERVES AS  
OUR HOST INSTITUTION

NON-DISCRIMINATION NOTICE:

Barton Community College is an equal opportunity provider and employer.  
Visit [equal.bartonccc.edu](http://equal.bartonccc.edu) for more information.



## GED CLASS ORIENTATION

Contact Information for GED class orientation:

BCC/Great Bend	August 4 – 7	620-793-5794
BCC/Fort Riley	August 4 – 7	785-784-6066
Cloud CCC – Geary County Campus	August 5 – 6 October 6 – 7	785-238-8010
Hays:	August 4 October 13	785-460-5486
Manhattan	August 5 – 7 September 22 – 24 November 4 – 6	785-539-9009
Salina	August 18 – 21 September 29 – October 2 November 10 – 13	785-309-4660

---

## CKEOC Staff and Locations

---

**Great Bend**  
 1025 Main St  
 620-793-8164  
**Academic Advisor**  
 Mary Dino  
**Academic Advisor/Data Specialist**  
 Liz Klima

**Project Director**  
 Susie Burt

**Junction City**  
 1012 A West Sixth  
 785-238-5200  
**Coordinator/Academic Advisor**  
 Ray Kruse  
**Secretary/ Data Specialists**  
 Mary Shane

---





1025 Main Street  
Great Bend, KS 67530

ADDRESS SERVICE REQUESTED

Non-Profit Org.  
U.S. Postage  
PAID  
Permit No. 11  
Great Bend, KS

## About CKEOC

The Educational Opportunity Center is 100% funded by the U.S. Department of Education and is one of the TRiO programs. TRiO began with Economic Opportunity Act of 1964, in response to the administration's War on Poverty.

TRiO programs include eight outreach and support programs targeted to help disadvantaged students progress from middle school to post-baccalaureate programs.



### 33 Counties Served by CKEOC

Barton	Mitchell	Rice
Clay	Morris	Riley
Cloud	Ness	Rooks
Dickerson	Norton	Rush
Ellis	Osborne	Russell
Ellsworth	Ottawa	Saline
Geary	Pawnee	Smith
Graham	Phillips	Stafford
Jewell	Pottawatomie	Trego
Lincoln	Pratt	Wabaunsee
Marshall	Republic	Washington

