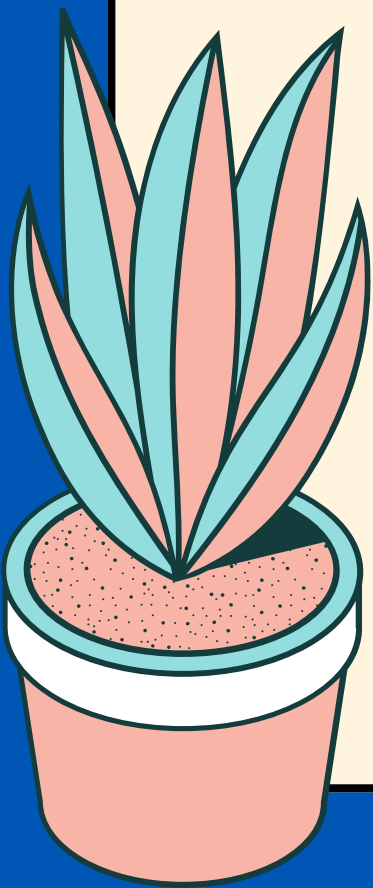


NOTICE

DEAR COUGARS!

**LSEC Cycle 6 official
schedule will be released
on June 13, 2024**

See below for our previous
cycle 6 as reference 📇



Barton Community College - Fort Riley Campus

LSEC (6 Week Day Classes) • Cycle 6
Tuesday, August 1 - Tuesday, September 12, 2023

Building 206 Custer Ave

Room 112	Course	Instructor	Materials	In-Person CRN	Live-Online CRN
1200-1330	MDAS 1672 Medical Terminology	Irwin	Textbook	10860	10861
1330-1500	HLTH 1248 Personal & Community Health	Irwin		10862	10863
Room 115					
0900-1030	ENGL 1120 English-Speak Other Languages (ESOL) • PREREQUISITE	Yu		10858	with approval

Building 211 Custer Ave

Room 005	Course	Instructor	Materials	In-Person CRN	Live-Online CRN
0900-1030	PSYC 1006 Abnormal Psychology • PREREQUISITE	Campbell	Textbook	11441	11442
1030-1200	PSYC 1014 Developmental Psychology	Campbell		11443	11444
1200-1330	PSYC 1016 Social Psychology • PREREQUISITE	Campbell		11445	11446
Room 113					
0900-1030	BSTC 1685 Spreadsheet Applications • PREREQUISITE	Klinger	Textbook	11447	11448
1030-1200	BSTC 1036 Computer Concepts & Applications	Klinger	Textbook	10874	10875

LiveOnline

Via Zoom	Course	Instructor	Materials	LiveOnline CRN
1330-1630 Mon/Wed Hybrid	CHEM 1806 College Chemistry I (5 CR) • PREREQUISITE *Must attend Tuesday, August 1st, then MW only	Bradford-Clark	Lab Kit	10879
1030-1330 Mon/Wed Hybrid	CHEM 1808 College Chemistry II (5 CR) • PREREQUISITE *Must attend Tuesday, August 1st, then MW only	Bradford-Clark	Lab Kit Molecule Kit	11449
1330-1500	COMM 1230 Public Speaking	Fullen		10880
1200-1330 Mon/Wed/Fri Hybrid	CRIM 1661 Criminal Procedures *Must attend Tuesday, August 1st, then MWF only	Peoples-Howard	Textbook	11487
Via Teams				
1030-1200 Tue/Thur Hybrid	ECON 1610 Principles of Macroeconomics	Henderson		10881
1030-1200	EDUC 1103 Student Success	Fullen		11451
1030-1200	EDUC 1136 Children's Literature	Hardwick		11452
0900-1030 Mon/Wed/Fri Hybrid	ENGL 1195 Integrated Reading & Writing • PREREQUISITE *Must attend Tuesday, August 1st, then MWF only	Hanson		10882
1030-1200 Mon/Wed/Fri Hybrid	ENGL 1204 English Composition I • PREREQUISITE *Must attend Tuesday, August 1st, then MWF only	Hanson		10883
0900-1030	ENGL 1206 English Composition II • PREREQUISITE	Hardwick		10884
0900-1030	HIST 1400 American History to 1877	Johnson		11453
1030-1200	HIST 1463 Military History/Second World War	Johnson		10887
1200-1330	LEAD 1000 Introduction to Leadership Concepts	Fullen		11454
1030-1200	MATH 1809 Basic Applied Mathematics	Bebout		10890
1200-1330	MATH 1821 Basic Algebra • PREREQUISITE	Bebout	Calculator (Optional)	10891
1030-1200	MATH 1824 Intermediate Algebra • PREREQUISITE	Kolembe	Calculator (Optional)	10892
1200-1330	MATH 1828 College Algebra • PREREQUISITE	Kolembe	Calculator (Optional)	10893
1330-1500	MUSI 1002 Introduction to Music	Hooser		10894
0900-1030	MUSI 1015 Fundamentals of Music	Hooser		10895
1030-1200 Mon/Wed/Fri Hybrid	PHIL 1602 Introduction to Philosophy *Must attend Tuesday, August 1st, then MWF only	Harders		11455
1030-1200	PSYC 1000 General Psychology	Ingala		10867
1200-1330	SOCI 1100 Introduction to Sociology	Ingala		10896
0900-1030	SOCI 1110 Juvenile Delinquency/Justice	Ingala		11456
0900-1030	STAT 1829 Elements of Statistics • PREREQUISITE	Kolembe	Calculator (Optional)	11457

Attendance is mandatory on the first day of the cycle.

LSEC

About LSEC

For detailed information regarding our LSEC classes, please visit our webpage at [LSEC.bartonccc.edu](https://lsec.bartonccc.edu) to learn more. Or scan the QR code below with your phone:



Important Dates

Enrollment Begins

June 20, 2023

Last Day to Enroll

July 28, 2023

Non-Activity Drops

August 8, 2023

Last Day to Drop

August 7, 2023

Last Day to Withdraw

August 21, 2023

Holidays

September 1 & 4, 2023

Materials Pick-Up

Starting July 28, 2023 - you may pick up your Course Materials from the Barton Office, 211 Custer Ave, Room 211.

Materials Returns

If not returned by September 13, 2023 charges will be applied to your account.

LSEC 7 Schedule Release

August 8, 2023

On-Duty Enrollment Requests

Active Duty Soldiers are required to complete an On-Duty Enrollment Request with the Education Center in order to attend the LSEC classes. These forms must be signed by the soldiers' Commander.

By Close of Business July 28, SOLDIERS MUST:

- Return signed forms to the Education Center
- Be enrolled with Barton

Per DOD policy, the use of Zoom on a Government PC and/or Network is not authorized.

Prerequisites

Prerequisite course information can be found at <https://bartonccc.edu/enrollment/classes>.

For questions, call us at 785-784-6606 and ask to speak to an advisor.



Find us on Facebook

facebook.com/bartonfr

Visit our Website

FR.bartonccc.edu

Contact Us

Phone: (785) 784-6606
Email: FortRiley@bartonccc.edu

All information is subject to change without notice.

Non-discrimination Notice: Barton Community College is an equal opportunity provider and employer. Visit equal.bartonccc.edu for more information.