



2023 ANNUAL
REPORT

 Barton Community College
FOUNDATION



Adventure!
2023

TABLE OF CONTENTS

Letter of Welcome	4
Impact	5
Projects	6
Scholarships	8
People	13
Donors	14
Foundation Board of Directors	18
Numbers	19
Financial Statements	20
Events	22
New Funds	23
Ways to Give	24
Giving Back	27

Cover: Barton students enjoy the excitement and joy of a well-earned graduation ceremony at each campus each year. Graduation cords are a tradition throughout academia, and at Barton, the black and silver cord denotes a student as the recipient of a scholarship from the Barton Community College Foundation, from one of hundreds of scholarship funds from donors that invest in the success of our communities.

Left: Students at the Fort Leavenworth commencement celebrate their achievements and look forward to a changed future and its possibility.

This photo and all others through the annual report are by Barton Communications.

LETTER OF WELCOME

This past year, the growth that we have witnessed in the Foundation is astounding! With a special focus on capital fundraising, we have had the pleasure of watching a whole new educational facility going up as we raise the funds for it with our Grow With Us capital campaign. It's an exciting year to work with the college and next year will be even better as we offer the first classes in the new Agriculture and Transportation Complex.

With that in mind, we are very thankful to the donors that have supported Barton with gifts of time, talent, and treasure. Your support in this capital campaign, our events, and in our everyday projects mean that not only can we do “business as usual,” but we can also create change in BIG ways!

We are pleased to present the Annual Report for July 1, 2022 to June 30, 2023 to you, which we have put together to demonstrate your impact on Barton students. We have been humbled in witnessing you make these changes and improve not only individual lives, but our communities as a whole.

Thank you!



Lindsey Bogner
EXECUTIVE DIRECTOR

IMPACT

THAT MATTERS

Impact is measured in so many ways. It is hard to quantify - how can you calculate the potential unlocked by a student getting a scholarship and making the very real difference in their future success?

Tangibly, we can track some numbers:

5 new funds and endowments created

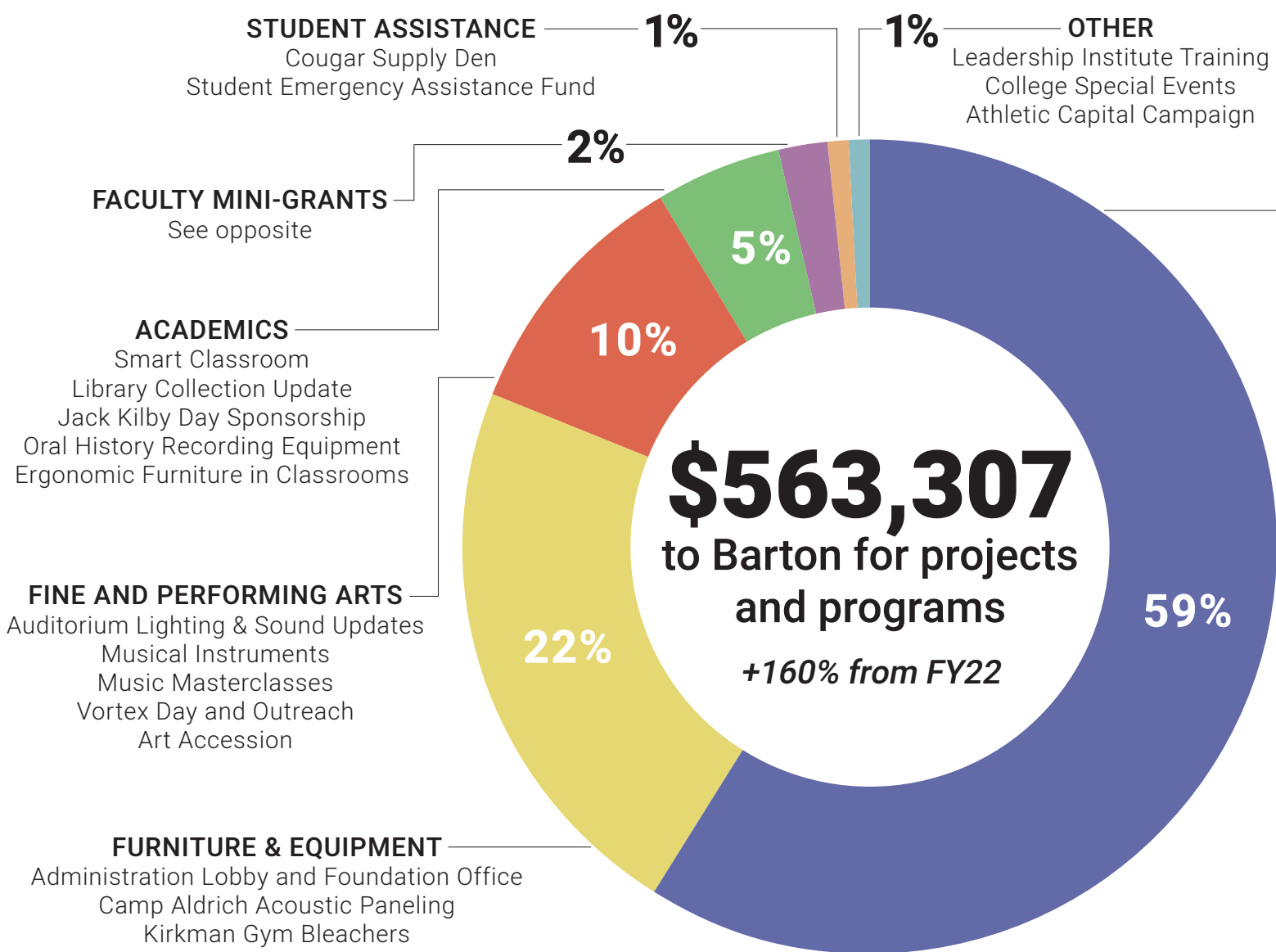
284 scholarships awarded

34 program and project grants

But it goes so much further.

Find out more about each of our mission-driven areas of focus to see the individual and institutional impact over the next few pages.

PROJECTS





WORKFORCE TRAINING

Ag and Transportation Complex
Business Department Education
Nursing Faculty Education
Criminal Justice Tactical Evidence Collection Kits
EMS Mannequin and Airway Simulator

Grow With Us Capital Campaign

After holding a groundbreaking ceremony in February, the Foundation has been working on a comprehensive capital campaign, called “Grow With Us” to raise funds for the new Agriculture and Transportation Complex. The new complex will house classes for seven certificate programs, two AAS (non-transfer) degree programs, and five AS (transfer) degree programs in the Workforce Training division. This includes the creation of a certificate program in a new area: Ag Mechanics, through a partnership with CNH Industrial and their Top Tech certification program for technicians.

The Kansas Department of Commerce awarded a \$1.85 million 1:1 matching grant of federal stimulus funds from the American Rescue Plan Act (ARPA) to construct the learning center, and the match must be made up of cash and in-kind donations and pledges from community partners.

FACULTY MINI-GRANT AWARDS

\$1,500: Kaufman Foundation Field Trip

Kathy Boeger, Business

\$767: Ceramics Workshop

Bill Forst, Ceramics

\$700: Coagulator Supplies

Karen Gunther, Medical Lab Technician

\$1,160: Storage Lockers

Philip Jacobson, Fine Arts

\$400: WWI Museum Trip for Students

Jason Lindstrom, History

\$2,500: Carpentry Tools

Matt Mazouch, Carpentry

\$1,097: Rail Loading Simulator

Terri Mebane & Chris Vanderlinde,
Military Programs

\$1,267: PEX Plumbing Tools

Jeff Meyer, Plumbing

\$485: Farm Tools

Maggie Tracy, Agriculture

\$615: Ergonomic Tools

Lawrence Weber, OSHA

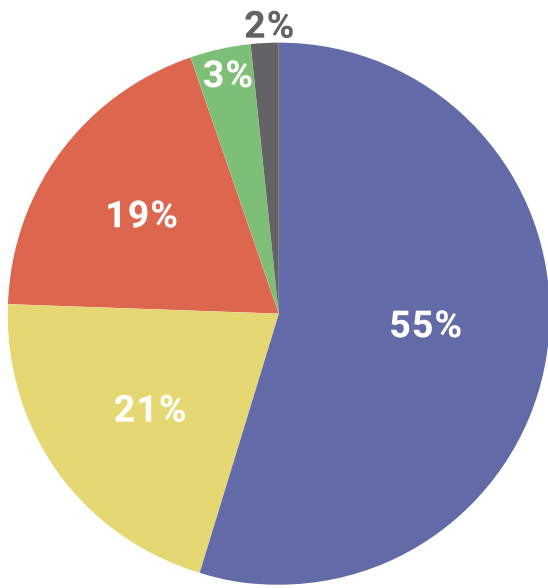
\$1,500: Theatre Conference Student Fees

Daniel Williams, Theatre

Faculty Mini-Grants are awarded across all Barton campuses to support the work done in the classroom. Funds for the program come from the proceeds of the Annual Sporting Clay Shoot.

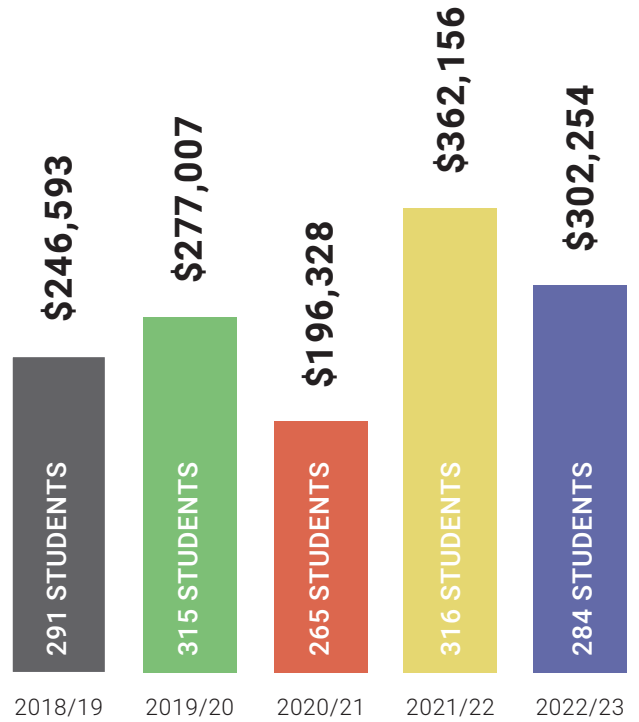
SCHOLARSHIPS

CHANGE LIVES



Where are our awardees from?

- **BARTON COUNTY**
- **SERVICE AREA**
Ellsworth, Pawnee, Rice, Russell,
Rush, and Stafford Counties
- **STATE OF KANSAS**
- **OUT OF STATE**
- **INTERNATIONAL**



FIVE YEAR AWARD HISTORY

284
students

\$302,254
in scholarships



2022/23 scholarship awards

Aldrich Trust Scholarship

Brody Feist, Great Bend, KS

Amos Bayer Memorial Scholarship

Adrian Adame, Saint John, KS
Jonah Clarke, McPherson, KS
Cooper Clumksy, Liberal, KS
Larry McCray, Knightdale, NC
Tyler Porter, Ellinwood, KS
Wade Potts, Ellinwood, KS

Bank of America Scholarship

Joel Ibarra, Saint John, KS

Barton Community College Foundation Memorial Scholarship

Diego Pena Becerra, Quito, Ecuador

Barton County Alumni Scholarship Endowment

Addison Smith, Hoisington, KS

Barton County Bar Association Scholarship

Ilesson Similien, Great Bend, KS

Barton County Medical Society Scholarship

Emicka Shoemaker, Russell, KS

BEST (Barton Enhancement & Scholarship Team)

Kaden Baird, Ellinwood, KS
Joshua Ball, Great Bend, KS
Bradley Beck, Great Bend, KS
Chandra Ehler, Hoisington, KS
Barnabas Kalaba, Lusaka, Zambia
Austin Moore, Great Bend, KS
Folasade Olayemi, Lagos, Nigeria
Kristy Wittig, Great Bend, KS
Chloe Schenk, Otis, KS

Bill E. Sowles Memorial Scholarship

Bradley Heine, Great Bend, KS

C & R Schauf Foundation Medical Scholarship

Amy Gerbrandt, McPherson, KS
Janai Jacobs, Hoisington, KS
Jessica Linarez, Larned, KS
Ashley Prescott, Hudson, KS
Jessica Runnels, Larned, KS
Taryn Sieg, Larned, KS
Jenna Sinnott, Ellsworth, KS
Alidsha Vazquez Centeno, Fort Riley, KS

Carl W. Sebitts Scholarship in Business Administration

Noah Kincade, Mansfield, TX
Clara Penido, Belo Horizonte, Brazil
Jordan Seelye, Junction City, KS

Cashco Welding Scholarship

Alexis Leyva, Great Bend, KS
Caleb Murphy, Great Bend, KS

Charlie Brown Life Sciences Scholarship

Gage Hosman, Ellinwood, KS

Chrissie Roe Evans and Dick B. Evans Memorial Scholarship

Ailyn Urias, Great Bend, KS

Clair and Jean Cavanaugh Scholarship Fund

Jaime Arellanes, Great Bend, KS
Natalie Bayona, Great Bend, KS
Maleny Carrasco, Great Bend, KS
Darien Sanchez, Great Bend, KS
Chelsea Villarreal, Great Bend, KS
Luzmaria Villegas, Great Bend, KS

Clara Barton Nursing Scholarship

BraShel Gieck, Hoisington, KS

Clarence and Lucile Lebbin Memorial Scholarship

Haley Troyer, Ellinwood, KS

Clifford and Pauline Getz Scholarship Program

Madison Cotterill, Ellinwood, KS
Heather Greenstreet, Junction City, KS
Erica Gross, Ellinwood, KS

Craig and Jolene Biggs Endowed Scholarship

Tyrus Riley, Bentonville, AR

Danny and Darlene Biggs Nursing Scholarship

Jennah Jeffery, Hoisington, KS

Danny and Darlene Biggs Scholarship

Hunter Jones, Topeka, KS

Dean Wells Memorial Scholarship

Karter Smith, Great Bend, KS

Donna Schmidt Memorial Scholarship

Shaiann Montoya, Hoisington, KS

Dr. Raymond J. Leiker Scholarship for MLT Studies

Savannah Schule, Clearwater, KS

Edward L. "Dusty" Jones MLT Endowment

Abigail Groot, New Cambria, KS

Elsa Hiatt Academic Scholarship

Ryleigh Post, Great Bend, KS

Emmett and Elizabeth Koelsch Academic Scholarship

Audra Clark, Hoisington, KS

Equity Bank Emerging Leader Scholarship

Jacqueline Dunham, Bonnor Springs, KS
Brendan Wolvington, White Cloud, KS

Ernest Grossardt Memorial Endowment

Emma Sanders, Saint John, KS

Farmers Bank & Trust Financial Management Scholarship

Charlie Seifert, Osborne, KS

Frank (Ryan) Vondra Endowed Scholarship

Mariah Thomas, Great Bend, KS

Frank and Leilia Smith Scholarship Fund

Alicia Abrego, Fort Riley, KS
Breanna Clark, Saint John, KS
Sayaka Kawai, Yokohama City, Japan
Brandon Nguyen, Houston, TX
Hunter Smith, Saint John, KS

Frank J. Dome Memorial Scholarship

Laura Jaske, Lyons, KS

Fred and Renee Schmitt Memorial Scholarship

Emily Robl, Lyons, KS

2022/23 scholarship awards

G.E. and Lois Alban Academic Scholarship

Peytan Butler, Albert, KS
Angel Lopez, Macksville, KS
Jacie Roth, Phillipsburg, KS

Gary and Anna Burke Family Scholarship

Francisco Alvarez, Great Bend, KS
Keeley Wolf, Great Bend, KS

Genevieve Schulz Memorial Scholarship

Oliva Kerr, Baldwin City, KS

George Tregellas Chairman's Scholarship

Tina Dimarzo, Larned, KS
Kaylee Eckart, Great Bend, KS

Glen and Dorothy Schuetz Family Scholarship

Koe Schultz, Elkhart, KS

Golda Underhill Bailey Memorial Scholarship

Kaylynn Claussen, Saint John, KS
Elizabeth Rasmussen, Burdett, KS
Bertha Williams, Great Bend, KS

Grace Rowden Scholarship

James Dean, Hutchinson, KS
Ciara Espinoza, Great Bend, KS
Sierra Kraatz, Kanopolis, KS
Carmen Lyons, Johannesburg, South Africa
Kaylee Maggard, Haviland, KS
Elisa Ruiz, Great Bend, KS
Anna Suiter, Macksville, KS
Lindsey Winkelman, Lyons, KS
Ariel Womack, Milledgeville, GA
Lexas Wright, Macksville, KS

Grant Lee Hoener Memorial Scholarship

Colton Wahlstrom, Firth, NE

Graydon Johnson Memorial Scholarship Fund

Jessica Disque, Great Bend, KS

Gus and Ethel Gagelman Memorial Scholarship

Jacob Kennedy, Great Bend, KS

Isbell Wesley Endowment Fund

Drake Stephen, Hill City, KS

J.A. Mermis, Jr. Memorial Scholarship

Hailee Bonham, Hoisington, KS
Diego Sanchez, Great Bend, KS

Jerry and Theda J Wendel Memorial Scholarship

Gilberto Calzada, Great Bend, KS

Jess E. Darnall Scholarship

Trey Rolfs, Little River, KS

Karen Jensen Ireland Memorial Scholarship

Cadance Devine, Ellinwood, KS

Keith and Marian Mull Endowment for Academic Studies

Ty Turner, Belpre, KS

Kirkman Endowment for Academic Studies

Elizabeth Adame, Pratt, KS
Jessica Lanterman, Great Bend, KS

L.E. "Gus" Shafer Endowed Memorial Scholarship

Ashley Herrman, Great Bend, KS
Kaiden Procopio, Great Bend, KS

Landon Unruh Memorial Scholarship

Hiparco Hernandez, Great Bend, KS

LaOportunidad Scholarship

Carolina Landeros, Lyons, KS

Larry and Kathy Schugart Scholarship

Jenna Henderson, Salina, KS

Larry Zinn Scholarship

Valerie Ruiz

Lee Turner Endowment

Michael Hestand, Great Bend, KS
Tyson Nicholson, Larned, KS
Ashleigh Sasina, Kingman, KS

Les and Carol Hopkins Scholarship

Kooper Maneth, Olmitz, KS
Jared McFadden, Larned, KS

Lisa Spatz-Smith Memorial Scholarship

Tianna Farris, Great Bend, KS

Loren and Gayle Unruh Endowment

Stefan Spray, Great Bend, KS

Loren and Maxine Pease Scholarship

Callie Zink, Claflin, KS

Louis S. and Mary L. Kinzel Family Memorial Scholarship

Markie Hestand, Great Bend, KS

M.E. "Eustace" Marmie Memorial Scholarship

Deborah Lowe, Uniondale, NY

Maloy and Pauline Breitenbach Allied Health Scholarship

Luis Holguin, Saint John, KS

Mamie Robl Memorial Scholarship

Mathew Figger, Larned, KS

Marian Isern Scholarship Fund

Dakota Aumiller, Great Bend, KS
Sienna Cauley, Great Bend, KS
Megan Clemons, Ellinwood, KS
Raven Ellis, Great Bend, KS

Marilyn K. Funk Charles Scholarship

Karina Estrada, Dodge City, KS

Mary King Fine Arts Endowment

Rylee Ayon, Great Bend, KS
Ashlynn Harrelson, Garfield, KS

Melvin O. Nuss Academic Award

Braeley Hammeke, Great Bend, KS

Monica Bell Reser Memorial Scholarship

Felicity De Tello, Pawnee Rock, KS
Brooke Farmer, Claflin, KS



Murphy Family Enterprises Endowment

Sydney Johnson, Burlingame, KS

Nancy Bartley Scholarship

Samantha Haney, Larned, KS

Nell Lyons Scholarship

Joeph Moeder, Great Bend, KS

Neva and L.E. Brocher Scholarship

Marno Du Plessis, Johannesburg, South Africa

Quentin Dressler Memorial Scholarship

Mariana Castillo, Great Bend, KS
 Carly Dreiling, Great Bend, KS
 Jade Poe, Great Bend, KS
 Kelci Popp, Great Bend, KS
 Kylee Sandy, Great Bend, KS
 Elena Taboada, Great Bend, KS
 Shelli Schmidt, Hoisington, KS

Ralph and Michael Raffelock Memorial Endowment

Kolton Maneth, Albert, KS
 Aide Reyes Sepulveda, Great Bend, KS

Ramona J. Goering Keenan Memorial Music Scholarship

Alexander Flinn, Wichita, KS

Regina Ault Memorial Scholarship

Jose Carrillo, Great Bend, KS
 Joshua Horner, Great Bend, KS
 Robert Wilcox, Great Bend, KS

Robert Bonomo Memorial Scholarship

Gracie McGinnes, Great Bend, KS
 Carolina Ramirez Hernandez, Great Bend, KS

Roger and Mary Lou Murphy Endowment

Jessica Grosfield, Larned, KS

Rosalie Jean Pennington Memorial Scholarship

Katherine Alnor, Larned, KS

S. Larry Edwardson Memorial Scholarship

Sarah Davis, Fort Riley, KS
 Karman Tefft, Beloit, KS
 Cora Usoro, Great Bend, KS

Schmidt Foundation Scholarship

Jenna Dean, Great Bend, KS
 Mary Dimitt, Ellinwood, KS
 Matthew Donecker, Claflin, KS
 Andrea Orona Favela, Great Bend, KS
 Ashton Waggoner, La Crosse, KS

Stanley and Elizabeth Post-Kimple Memorial Scholarship

Elizabeth Gonzalez, Ellinwood, KS

Superior Essex Academic Award

Antony Reyes Pilo, Great Bend, KS

2022/23 scholarship awards

SCHOLARSHIPS

Sylvan Bleeker Memorial Scholarship

Abby Muth, Great Bend, KS

The Kummer Family Scholarship

Damarys Nieto, Great Bend, KS
Morgan Sallabedra, Great Bend, KS

The Vink Family Honorarium Scholarship

Summer Anderson, Manhattan, KS
Kaylee Babcock, Lincoln, KS
Joel Dubose, Collinsville, OK
Colby Fair, Wellington, KS
Kimbri Francis, Great Bend, KS
Elle Hutchinson, Great Bend, KS
Adisyn Jacobs, Hays, KS
Daegan Johnson, Ellinwood, KS
Emma King, El Dorado, KS
Haley McCormick, Great Bend, KS
Rylee Miller, Russell, KS
Yolanda Perez, Great Bend, KS
Courtney Prescott, Hudson, KS
Ashlynn Shea, Junction City, KS
Kynslee White, Great Bend, KS

Tony and Edna Schartz Memorial Scholarship

Austin Miller, Great Bend, KS
Pricilla Villarreal-Galicia, Kensington, KS

Tony and Marguerite McAnnulla Memorial Fund

Chance Baker, Ellinwood, KS

Verna S. Davis Memorial Scholarship

Tasiah Nunnery, Hays, KS

Virgil and Eloise Belford Scholarship

Hannah Loomis, Great Bend, KS
Penelope McCraw, Hoisington, KS

William and Johanna Rinker Nursing Scholarship

Mandee Solko, Great Bend, KS

Yvonne Robbins Entrepreneur & Leadership Endowment

Caleb Carr, Garden City, KS
Spring Miller, Moundridge, KS
Peighton Sasina, Kingman, KS
Reagan Schridde, Great Bend, KS



12

Setting up a scholarship fund is a meaningful way to give back to your community or to honor a loved one, friend, or group.

For information about how to create an endowed or annually funded scholarship for Barton students, contact Lindsey Bogner at (620) 786-1141 or bognerl@bartonccc.edu



PEOPLE

THAT MATTER

Donors, volunteers, students, faculty, staff, board members, and partners make the change you see reported here. Each person believes in our mission and makes it a reality through their support in whatever area they're involved in.

We are so thankful for you.



Brad and Sarah Shirer recognized with Old Bill Honorarium at 43rd Annual Auction

The “Old Bill” Honorarium was dedicated to Brad and Sarah Shirer last year and scholarships were given in their honor from the funds raised during the 2022 Big Benefit “Boots & Brews” Auction.

Starting in 1978 with the donation of a mounted buffalo head, named “Old Bill”, this tradition has become a highlight of the auction, allowing attendees to donate directly to student scholarships in honor of a carefully selected individual, couple, or family. The Foundation Board of Directors takes great care in selecting the honoree(s) each year.

\$10,550 was raised for the Old Bill Honorarium in honor of the Shirers and given to students through scholarships for the 2023-2024 school year. In addition to the honorarium raised the night of the auction, the Shirers set up a new endowment fund called the

Shirer Stage and Song Scholarship that provides scholarships to music students and grants to the music and theatre departments for music and musicals.

Sarah said working with the college foundation and observing the college grow over the years has been an amazing experience.

“It’s time, money and effort well spent because you see it reflected in the community and people of all ages and stages of life come here to enhance their abilities or to improve their situation,” she said. “So, it’s a good feeling to see how things continue to develop and grow and it’s fun to share that with people. We meet students at the college and then we see them working in town and watching them grow up.”

Foundation Director Lindsey Bogner said the Foundation was

excited to honor the Shirers for their years of positive involvement with the college.

“The Shirers have a long family history of supporting Barton,” she said. “Brad and Sarah have supported the college in so many ways, and you can tell they ‘get it.’ They understand the importance of all the amazing things the college does and that’s why they’ve made it a priority in their lives.”

Brad said they were very honored to be recognized by the Foundation as part of the Old Bill tradition.

“There have been a lot of very influential names on this honorarium and to have our names included is just the most amazing thing,” he said. “This is a huge honor. It’s just tremendous. We can’t thank everyone enough.”



Dr. Bill King leaves a generous legacy

Dr. Bill King was a generous and supportive friend of the Foundation, and after his passing in January, he has been greatly missed. His thoughtfulness and kindness have left a mark and its absence is noticeable.

his assets for his family and the causes he wanted to support. He discussed his desire for us to share about his gift and let others know of his plans, both before and after he passed, so that he could leave a different kind of legacy: one where his gift would encourage others to consider estate gifts to the Foundation. As part of that conversation, we discussed the creation of a legacy giving society that would recognize donors that make these types of gifts. Soon after, the Barton Legacy Society was created.

Dr. King's memory lives on not only in his family and friends, but in the countless students that pass through Barton on their way to become the future healers in our communities.

It will live on through the gifts he inspires from others as they follow his example. We are so grateful to be a small piece of these legacies and to do the work that our donors believe in.

Throughout his life, he supported many causes. The Foundation has always counted itself as honored to be among them. The works of service he performed and the generosity he shared have been inspirational for years.

Last year, he set up the Dr. Bill King Grant for Healthcare to provide funds for Barton healthcare programs. At the time, he discussed his plans to leave a portion of his estate to increase the funds in the endowment. By setting up the Foundation as a beneficiary of his IRA, he made a lasting impact on all of our healthcare programs while prudently managing

Barton Legacy Society

Honoring those who continue to impact Barton in ways too numerous to count, both before and after their passing. These generous individuals have had the foresight to provide the gift of education to those that will come after them by creating trust, estate, or planned gifts to Barton Community College Foundation to continue building their legacy.

Lois Alban+•

Elmer and Frances Amerine+

Anonymous

Regina Ault+

Billie Bonomo

Neva and L.E. Brocher+

Gary and Anna Burke•

Jean Cavanaugh+•

Jess E. Darnall+

Verna S. Davis+

Irva E. Fair Drews+

Quentin Dressler+

Lynn and Hazel Duke+

Alice M. Dundas+

Chrissie Roe Evans and Dick B. Evans+

Jerry E. Felkel+

Clifford and Pauline Getz+

Clarence A. and Jeanette K. Haak+•

Leila and D.W. Hamilton+

Elsa Hiatt+

Graydon Johnson+

Dr. Bill King+•

Bryan and LaVerne McCullough+

Bill McKown+•

Loren and Maxine Pease+

Mamie Robl+

Grace Rowden+

Ray "Jiggs" Schulz+

Frank and Lelia Smith+

Golda Underhill Bailey+

William C. Wells+•

+deceased

•Distinguished Service Award recipient(s)

Earl and Judy Fox receive Distinguished Service Award

The Barton Community College Foundation honored Earl and Judy Fox as the 2023 recipients of the Distinguished Service Award (DSA) at Barton's commencement ceremony in May. The Distinguished Service Award was created in 1981 to recognize individuals that have shown genuine regard for and performed outstanding service to Barton Community College.

Earl and Judy have been a part of the Barton family since 1969, when the college opened. They have had three seats reserved at the gym to watch games and events throughout the years, and over decades of support, they've been to hundreds of basketball games, theatre productions, concerts, and other events.

What started as a love of Cougar sports blossomed into a love of all things Barton, as Judy took classes and completed the elementary education program at the age of 37, saying, "It was a God thing" that she had that chance to go into a field she loved.

After her retirement as a teacher in Great Bend, Judy served with distinction on the Foundation Board of Directors for four terms over 12 years and retired from the board last year. She is most proud of the scholarships offered to students and the projects the Foundation supports that help leverage support from others and inspire generosity.



"Scholarships from the Foundation are available to everybody," she said. "Anyone who wants to go to Barton is eligible for help. We meet students where they are interested and help them achieve their dreams. I loved all of my time on the board; the dedicated and thoughtful decisions we made truly made a difference in so many lives."

Over the years, the Foxes have watched students come and go, and for Earl, seeing that each and every student was welcomed and cared for as family here makes all the difference. He has also been a volunteer and donor to the

Foundation for many years, even though he will claim he was just supporting Judy's efforts.

"Students are not a number at Barton; they can't get lost," he said. "It's not a giant lecture hall where the teacher doesn't know your name."

The Foxes have been staunch supporters of Barton and the Foundation for so long that they can't think of a single activity or any one thing that draws them to Barton. They have a long list of favorite memories. They often share stories of these memories,

Pioneer Society Members

Barton Community College Foundation is recognizing and honoring the generous thinkers that came before us and paved the way for us to follow. These were the very first endowed funds created (1967-1982) to build the Barton Community College Foundation and have become the guiding star to those that follow after.

These funds and these families and donors have made an impact and it is measured in generational change instead of years. The long-reaching effect of these funds is felt in individuals and families across our communities, our state, our nation, and our world through scholarships and grants to improve the education experience of thousands of students.



Grant Lee Hoener Memorial Scholarship

Grace and Clay McConnell Memorial Scholarship

Helen M. Koopman Memorial Scholarship

George and Ruth Murdy Memorial Scholarship

Neva and L.E. Brocher Scholarship

Genevieve Schulz Memorial Scholarship

The Kummer Family Scholarship

Elsa Hiatt Academic Scholarship

Stanley & Elizabeth Post-Kimple Memorial Scholarship

F.D. Forbes Scholarship

Dr. Raymond J. Leiker Scholarship for MLT Studies

Monica Bell Reser Memorial Scholarship

William and Johanna Rinker Nursing Scholarship

Marian Isern Scholarship Fund

J.A. Mermis, Jr. Memorial Scholarship

Marlene Morrison Endowment Fund

Bryan and LaVerne McCullough Endowment

Don and Phyllis Whelan Academic Award

“Scholarships from the Foundation are available to everybody. Anyone who wants to go to Barton is eligible for help. We meet students where they are interested and help them achieve their dreams.”

Judy Fox

attend events like the Big Benefit Auction, watch the new programs be created, and existing programs grow and love to see the unique Faculty Mini-Grant projects. Judy has a goal to start an endowment through the Foundation eventually.

“We just love Great Bend,” she said. “We love Barton. I can’t think of any place I’d rather be.”

The couple has lived in Great Bend for 61 years and has a daughter, Cindi, who lives in Pittsburg,

three grandchildren, six great-grandchildren, and a son, Kenny, who passed in 1991. Earl is originally from St. John, and Judy is from Casper, Wyo.

The couples’ support of Barton and the Foundation has earned them the distinct honor of receiving the Distinguished Service Award. Throughout the years, Judy and Earl’s service has made an indelible mark on programs throughout the college, across our campuses, and on the lives of thousands. The Foundation is honored to recognize them.

BOARD OF DIRECTORS



Dennis Sherman
2024 Chair



Rick Bealer
2024 1st Vice Chair



Jay Luerman
2024 2nd Vice Chair



Jolene Biggs
2024 Immediate
Past Chair



Chuck Fellhoelter



Mac Holman



Rob Munden



Sonya Rein



Kevyn Soupiset



Nancy Sundahl



Steve Webster

2024 INCOMING DIRECTORS

2023 OUTGOING DIRECTORS



Tarynn Kirmer



Karen Lindberg



Tiffany Mayo



Jan Westfall

NUMBERS

THAT MATTER

Being fiscally responsible is paramount in our operations. Normally, we would say that numbers don't matter, but here they very much do and we are happy to report that we received an unqualified audit in November.

We've included financial information about our 2022-2023 year, events, and funds over the next few pages.

BARTON COMMUNITY COLLEGE FOUNDATION

Statements of Financial Position

June 30, 2023 and 2022

	ASSETS	
	2023	2022
Current Assets		
Cash	\$ 200,932	\$ 221,376
Investments	4,208,722	3,430,240
Interest and Dividend Receivable	19,541	17,078
Other Receivable	835	-
Current Unconditional Promises to Give	20,000	11,894
Total Current Assets	4,450,030	3,680,588
Other Assets		
Unconditional Promises to Give, Net of Current Portion	20,000	-
Beneficial Interest in Remainder Trusts	483,368	440,031
Beneficial Interest in Assets Held by Golden Belt Community Foundation	15,805	15,299
Restricted Endowment Investments	5,708,685	4,977,070
Land	-	94,000
Book Collection	129,579	128,356
Permanent Art Collection	772,940	768,940
Total Other Assets	7,130,377	6,423,696
Total Assets	11,580,407	\$ 10,104,284
	NET ASSETS	
Current Liabilities		
Accounts Payable	1,050	\$ 1,520
Net Assets		
Net Assets Without Donor Restrictions	1,816,286	1,746,593
Net Assets With Donor Restrictions	9,763,071	8,356,171
Total Net Assets	11,579,357	10,102,764
Total Liabilities and Net Assets	11,580,407	\$ 10,104,284

BARTON COMMUNITY COLLEGE FOUNDATION

Statement of Activities
For the Year Ended June 30, 2023

	Without Donor Restrictions	With Donor Restrictions	Total
Operating Revenues			
Public Support			
Contributions	\$ 527,838	1,004,820	1,532,658
In-Kind Contributions and Purchases of Artwork	453,178	613	453,791
Total Public Support	981,016	1,005,433	1,986,449
Revenues and Gains			
Other Income	614	835	1,449
Net Investment Income (Loss)	458,574	458,366	916,940
Net Transfers Between Without Donor Restriction and With Donor Restriction at the Request of the Donor	(25)	25	-
Change in Value of Split Interest Agreements	-	43,338	43,338
Change in Value of Beneficial Interest in Golden Belt Community Foundation	506	-	506
Total Revenues and Gains	459,669	502,564	962,233
Net Assets Released From Restrictions			
Satisfaction of Donors' Restrictions	101,097	(101,097)	-
Total Operating Revenues	1,541,782	1,406,900	2,948,682
Expenses			
Program Services			
Scholarships and Program Enhancements	1,249,162	-	1,249,162
Support Services			
Management and General	133,182	-	133,182
Fundraising	89,745	-	89,745
Total Support Services	222,927	-	222,927
Total Expenses	1,472,089	-	1,472,089
Change in Net Assets	69,693	1,406,900	1,476,593
Net Assets - Beginning of Year	1,746,593	8,356,171	10,102,764
Net Assets - End of Year	\$1,816,286	9,763,071	11,579,357



13th Annual Sporting Clay Shoot

April 16, 2023

REVENUE

Event Sponsorships	15,710
Shooter Registrations	21,300
Raffle	2,825
Flurry Competition	1,230
Ammo Sales	1,836
	42,901

EXPENSES

Course Management	8,991
Lewis and Flurry Payouts	2,516
Top Score Prizes	560
Raffle Item(s)	880
Meals	3,422
Supplies	1,757
Ammo	850
Judges	650
	19,188

NET REVENUE \$23,275

Funds raised are used for the Faculty Mini-Grant Program

43rd Annual Big Benefit Auction

August 27, 2022

REVENUE

Event Sponsorships	18,650
Item Sponsorships	4,940
Auction Sales	28,690
Old Bill Honorarium	10,550
Ticket Sales	9,200
Golden Ticket Sales	1,875
	73,905

EXPENSES

Venue and Decor	1,770
Meals and Drinks	5,120
Auction Packages	5,455
Golden Ticket Winner	1,000
Labor	90
Promotion	100
Sales Tax	1,129
	14,664

NET REVENUE \$59,241

Funds raised from the auction are used for program, project, and facility enhancements across all Barton campuses.

The Old Bill Honorarium funds are used to give scholarships in the name of the honoree(s) for the next school year.



NEW FRIENDS AND FUNDS

Each year, the Foundation grows with the help of new and old friends. This year, we added 5 new funds from new and old friends, and we are so glad that they're here with us!

ANNUAL FUND

The Williams Scholarship

The Williams Companies, Inc., one of the nation's largest natural gas processing and transportation companies, is a strong partner of Barton's Natural Gas Transmission and Distribution program. Through

their Community Giving programs, they have created both an annual fund and endowed scholarship for traditional students of the program with a GPA of 2.5 or higher, with a minority (of gender or ethnicity) preference.

ENDOWMENTS

Shirer Stage and Song Scholarship

While being recognized with the Old Bill Honorarium at the 43rd Annual Big Benefit Auction, Brad and Sarah Shirer created the Shirer Stage and Song Scholarship. The endowment is mixed use and provides scholarships and can be used for program enhancements. It provides scholarships to Fine Arts majors that have financial need and are residents of Barton County or Barton's seven-county service area. It can also be used for buying music for performance or education in the vocal and instrumental departments and the community choir and funding musicals in the theatre department.

Norman and Karen Keller Memorial Scholarship

After their mother's passing in 2020, brothers Kevin and Jeff Keller and sister Kim Meeds, wanted to memorialize her and their father, who passed in 1999. The care that Karen received by Barton graduates of the CNA program during the end of her life was appreciated by her family and this was a way that they could recognize the program and the students. They created the Norman and Karen Keller Memorial Scholarship to assist students in Agriculture, Business, Adult Healthcare, and Nursing with a 2.5+ GPA who resided in Barton's seven-county service area.

The Williams Scholarship

The Williams Companies, Inc., one of the nation's largest natural gas processing and transportation companies, is a strong partner of Barton's Natural Gas Transmission and Distribution program. Through their Community Giving programs, they have created both an annual fund and endowed scholarship for traditional students of the program with a GPA of 2.5 or higher, with a minority (of gender or ethnicity) preference. The endowed scholarship will provide scholarships through the natural gas programs in perpetuity.

Student Emergency Assistance Endowment

As part of the BEST (Barton Enhancement and Scholarship Team) campaign in 2018, Barton employees raised funds to create an emergency fund for students. Barton students experiencing non-school related hardships, such as medical or transportation issues, can apply for funds to assist; the applications are reviewed by a team in Student Services and recommended for payment to the Foundation, after which funds are distributed in the student's name to the appropriate vendor.

This year, the Foundation has matched a community donor to build an endowment to provide a permanent source of funds for this critical resource.

GIVING BACK MAKES
A DIFFERENCE.

**YOU MAKE A
DIFFERENCE.**

WAYS TO GIVE



Create a Named Endowment Fund

Creating an endowment is a way to leave a permanent legacy supporting the education of thousands through generations at Barton. An endowment fund is created by donating at least \$10,000, which is held as “principal.” That principal is then invested and the Foundation

uses the earnings from the investment to follow your intention. Additional gifts can later be made into the principal or for use immediately, depending on your philanthropic goals. The original principal must be funded within five years.

SCHOLARSHIP

Each scholarship endowment is set up with your intentions for the type of student you would like to support. The “award criteria” can be based on where the student resides or graduates high school, their academic performance, major/program of study, and/or financial need, among other options. The less restrictive the fund, the more students are eligible for assistance from that fund. Each January, we determine the scholarship projection amount based on the calendar year-end balance of earnings in the fund and the intended payout.

ENHANCEMENT

Enhancement endowments are set up with your goal to support equipment, facilities, programs, and projects to make Barton better. These endowments are available whenever a project at Barton needs additional capital to that available from the general operating budget of the college. A simple example would be an equipment endowment for a specific department; another example would be general support for a specific program or initiative. The Foundation uses an open proposal system to identify and determine the fund matches.

MIXED USE

You can set up this type of fund to be used for scholarships and enhancements, with awards based on the criteria you set up. An example would be an endowment that provides scholarships and program grants to a specific department. This type of fund can also be completely unrestricted – you set up the fund and allow the Foundation to designate its use to wherever the college needs it most.

Create a Named Annual Scholarship Fund

Annual scholarships are set up if you would like to create a scholarship for a limited amount of time or do not want to restrict a principal. Each year, you donate the amount

that we use in scholarship awarding the next year. You can pledge to give for whatever length of time works best and we can invoice you on an agreed-upon schedule.

Give an Outright Gift

An outright gift makes an immediate impact in the area that you want to support. This type of gift can be made in many types of giving vehicles described below and can be unrestricted or restricted. These are often the easiest gifts to make because they can be simple and

quick, or they can be as restrictive as you would like. Depending on the complexity of your restrictions we may or may not need a gift agreement detailing specific details of the gift and usage.

DONATION

Donations of cash, check, or stock/securities can be made at any time as an unrestricted gift or to any program, initiative, or project you would like to support. These gifts will be available for use immediately to the designated area.

EVENT SUPPORT

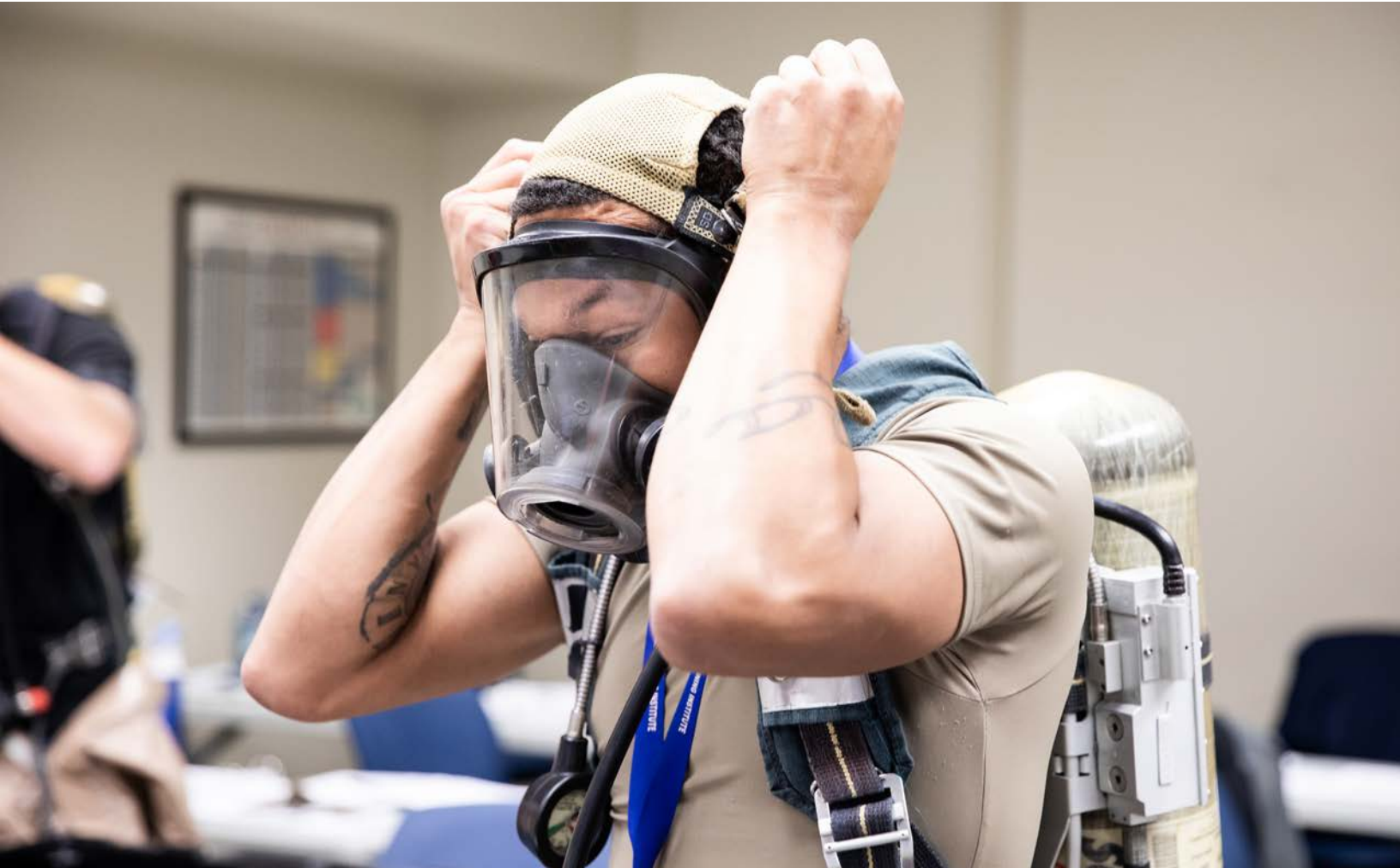
Sponsorships and donations to our fundraising events help us to get our message out publicly and raise more funds. Your donation to our event can be made with cash/check/credit card or in-kind items. Your attendance is also welcome!

PLEDGE

Pledges are promises to pay over a period of time instead of in a one-time gift. Pledges are a useful tool for you to support projects on a longer term and allow you to give more over time instead of a large amount all at once. Pledges can be unrestricted or designated to any program, initiative, or project you would like to support; they are also incredibly helpful for large capital campaign projects.

REAL PROPERTY

Real property can be items, equipment, real estate, and so much more. A gift of real property can be useful for a specific department; for example, a piece of equipment for a technical program allows students to gain skills working with equipment they will see in their industry or a piece of property that the college can use in instruction. Real property also includes commodities or real estate that the Foundation can sell and the proceeds can be used to follow your intentions.



Make a Planned (Deferred) Gift

Planned gifts are deeply personal, and allow you to consider the wellbeing of your heirs and the causes you want to support. The options are numerous when making planned gifts, and should always be coordinated with your loved ones and, depending

on complexity of your estate, with an estate planning attorney. In addition to leaving a legacy at Barton, you will be recognized (if you so choose) in our Barton Legacy Society recognizing and celebrating donors who make gifts in this way.

BEQUEST

A bequest is a gift made as part of a will or trust. You can make multiple bequests in your estate plan, making sure to provide for your heirs and any causes you want to support. Bequests can be set up multiple ways:

- General bequests are monetary gifts from your estate's general assets.
- Demonstrative bequests are monetary gifts from a specific account.
- Specific bequests are a specific item, property, or amount from your estate.
- Residuary bequests are monetary gifts made after all debts, expenses, and other bequests are made from an estate, and are typically a percentage of the remainder of the estate.

BENEFICIARY DESIGNATION

Accounts like individual retirement accounts (IRAs) and 401k or 403b retirement accounts require that you set up a beneficiary, and bank and investment accounts can be set up likewise (sometimes called "payable on death" beneficiaries). You can choose to set up these accounts with the Foundation as the beneficiary and let us know about your intentions so that we can follow your wishes.

LIFE INSURANCE

Life insurance gifts can be set up as a beneficiary designation or can be purchased by you with the Foundation as the owner of the policy of the whole or universal policy. The premiums on this type of policy are tax deductible and provide for a guaranteed gift upon your passing to the Foundation to be used in accordance with your wishes.

REAL ESTATE AND RETAINED LIFE ESTATES

Gifts of real estate can be made during your life for the tax benefits and then you (or someone you designate) can continue to live/work on the property until a time specified by you or until your passing, providing the Foundation with a valuable gift while still providing for you and/or your heirs. After the agreed upon time, the Foundation can use the property or sell and use the proceeds according to your wishes.

CHARITABLE LEAD OR REMAINDER TRUSTS

Charitable trusts are a great way to provide for you and/or heirs while also making a gift to the Foundation. The difference between these two options is when the Foundation receives the gift.

- A charitable lead trust is an irrevocable trust designed to provide financial support to the Foundation for a period of time, with the remaining assets eventually going to family members or other beneficiaries. It can potentially provide benefits such as an income tax deductions or estate or gift tax savings on assets ultimately passed to the individuals designated as remainder beneficiaries.
- A charitable remainder unitrust is an irrevocable trust that generates an income stream for you, or other beneficiaries, with the remainder of the donated assets going to the Foundation at the end of the term of the trust (not to exceed 20 years). The trust pays you, each year, a variable amount based on a fixed percentage of the fair market value of the trust assets. The amount of your payments is redetermined annually. If the value of the trust increases, so do your payments. If the value decreases, however, so will your payments.

It's the season for giving back

As we enter the holiday season, you may be thinking about your shopping list. But why not also explore giving to the Barton Foundation?

Making an end-of-the-year gift to the Foundation can make a huge impact on Barton, while also being beneficial for you come tax season.

A gift right now is a perfect way to make change and improve the programs and services at Barton and change the lives of students.

POTENTIAL TAX BENEFITS OF BEING CHARITABLE

» If you itemize on your tax returns, you can generally deduct 60% of your adjusted gross income (AGI) for cash gifts you make to IRS-qualified public charities like the Foundation.

» When itemizing deductions, the IRS requires that you substantiate your donation. For donations under \$250, your own records, such as a canceled check, are fine. For donations \$250 and over, you must obtain written acknowledgment of the donation from the charity. The Foundation provides tax receipts for every donation, regardless of size.

» You'll receive a tax deduction based on the fair market value of stocks or other securities, up to 30% of your AGI. When you give appreciated stocks, you can avoid paying capital gains taxes.

For answers to more complex questions, consult with your financial or tax advisor.

End-of-the-year gifts come at a time that makes a huge difference in the number and amount that the Foundation can award in scholarships starting in the spring – it's also time for College programs to finalize the budget processes for the next school year.

This annual report has told you of all the good things donors have done over the last fiscal year – you can add to that change for this year by making the difference for a student, for your community, and for generations to come.

Please return this form with your gift or scan here:



YES! I want to make change at Barton!

Name(s) _____

Address _____

Phone _____

Email _____

Would you like to receive our monthly e-newsletter? Yes No

Donation Amount \$ _____

How can we recognize your generous gift?

- I/We wish to remain anonymous
 Please list my/our name as:

Would you like to restrict this gift to a specific use or fund?

- Unrestricted
 Restricted - please apply this gift to this fund:



_____	Non-profit Org. U.S. Postage PA ID Permit No. 11 Great Bend, KS

JOIN US! SAVE THE DATES

A photograph of an auction in progress. A woman in the foreground is holding up a bid card with the number "200" on it. Other people are seated at tables in the background.

45th Annual Big Benefit Auction
August 24, 2024
Great Bend Events Center

A photograph of a person in a vest aiming a rifle at a target during a sporting clay shoot. A sign on the target stand reads "ATTENTION EYE & EAR PROTECTION REQUIRED AT ALL TIMES SAFETY IS EVERYONE'S RESPONSIBILITY".

14th Annual Sporting Clay Shoot
April 21, 2024
Camp Aldrich