



2024 ANNUAL
REPORT

 Barton Community College
FOUNDATION



TABLE OF CONTENTS

Letter of Welcome 4

Impact 5

 Projects 6

 Scholarships 10

People 13

 Donors 14

 Foundation Board of Directors 18

Numbers 19

 Financial Statements 20

 Events 22

 New Funds 23

 Ways to Give 24

Mission Update 27

Cover: Graduation is an exciting time at each campus each year. Graduation cords are a tradition throughout academia, and at Barton, the black and silver cord denotes a student as the recipient of a scholarship from the Barton Community College Foundation, from one of hundreds of scholarship funds from donors that invest in the success of our communities.

Left: Students at the Barton County commencement celebrate their achievements and look forward to a changed future and its possibility.

This photo and all others through the annual report are by Barton Communications.

Non-discrimination Notice: Barton Community College is an equal opportunity provider and employer. Visit equal.bartonccc.edu for more information.

LETTER OF WELCOME

This past year has been nothing short of extraordinary for the Barton Community College Foundation! With the completion of the Grow With Us capital campaign, we witnessed the culmination of years of dedication, collaboration, and generosity as the new Agriculture and Transportation Complex came to life. This facility enables Barton to continue to build on workforce development initiatives in our region, and it simply wouldn't have been possible without your steadfast support.

As we reflect on these accomplishments, we are filled with gratitude for our donors, partners, and volunteers who have shared their time, talent, and treasure with us. Because of your contributions, we've been able to move beyond "business as usual," creating opportunities for transformative education and lasting change in our community.

This Annual Report, covering July 1, 2023, to June 30, 2024, highlights the incredible impact you have made. From scholarships and endowments to innovative programs and expanded facilities, your generosity is empowering students, enriching lives, and strengthening our region.

On behalf of the Barton Community College Foundation, thank you for your unwavering commitment. Together, we are building a brighter future, one opportunity at a time.

THANK YOU!



Lindsey Bogner
EXECUTIVE DIRECTOR

IMPACT

THAT MATTERS

Impact is measured in so many ways. It is hard to quantify - how can you calculate the potential unlocked by a student getting a scholarship and making the very real difference in their future success?

Tangibly, we can track some numbers:

6 new funds and endowments created

155 scholarships awarded

52 program and project grants

20 faculty mini-grants

3 specialty scholarships

But it goes so much further.

Find out more about each of our mission-driven areas of focus to see the individual and institutional impact over the next few pages.

PROJECTS

ENHANCE STUDENT LEARNING

6

Projects across all Barton campuses have a profound impact on the student experience. Through these targeted initiatives, the Foundation is dedicated to enriching academic programs and broadening opportunities for all students. This past year, the Foundation is proud to report a doubling of its grant-making, a milestone that has enabled support for more impactful projects than ever before.

Faculty Mini-Grants

Supporting faculty innovation and student engagement remains a cornerstone of the Foundation's mission. This year, 20 Barton faculty members received mini-

grants to enhance their programs, impacting a total of 18 disciplines across the college. These grants ranged from \$73 to \$2,499 and enabled faculty to acquire new equipment and deliver unique learning experiences beyond traditional classroom instruction. Thanks to support of our annual Sporting Clay Shoot, these mini-grants make it possible for Barton faculty to enrich their courses and inspire student curiosity and achievement in tangible ways.

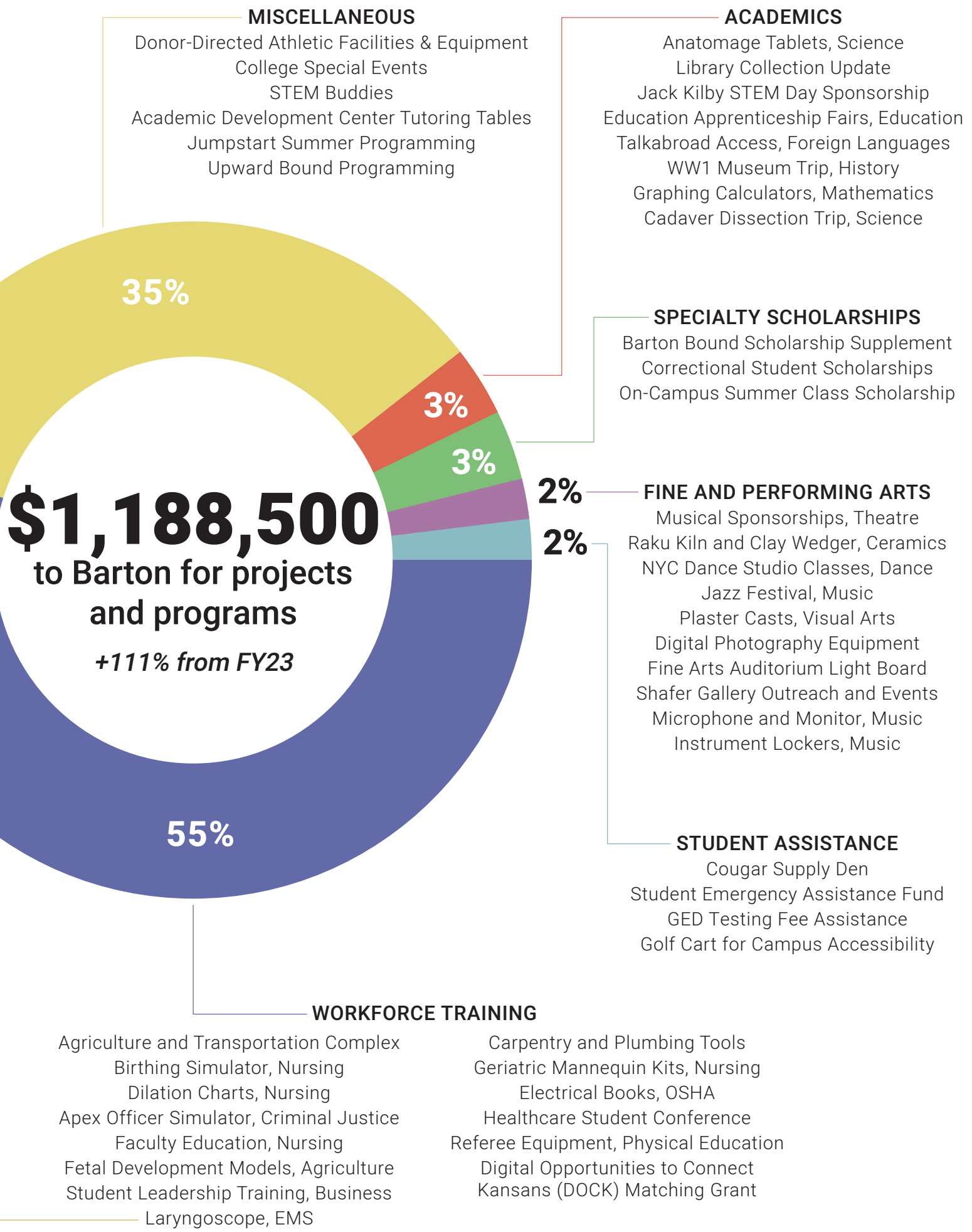
Matching Grants

As part of a new collaboration within the Institutional Advancement division, the Foundation and Barton's Grants department have united to expand the reach of available funding. In total, \$626,300 of distributed grant funds were matched with additional grants awarded to Barton, amplifying the impact of each dollar contributed. This matching approach not only increased the financial resources available for Barton's projects and programs but also underscored the power of strategic partnerships in driving institutional growth and student success.

Specialty Scholarships

The Foundation was able to fund three types of specialty scholarships. The Barton Bound scholarship supplement supports Kansas high school graduates and awards are based on the student's GPA. Correctional scholarships are those awarded to students learning at Ellsworth Correctional Facility or Larned State Correctional Facility. The On-Campus Summer Scholarship was a new initiative in 2024, awarding 3 credit hour scholarships to students taking classes on the Barton County campus in a shortened format, often allowing students to get a head start on college.





MISCELLANEOUS

- Donor-Directed Athletic Facilities & Equipment
- College Special Events
- STEM Buddies
- Academic Development Center Tutoring Tables
- Jumpstart Summer Programming
- Upward Bound Programming

ACADEMICS

- Anatomage Tablets, Science
- Library Collection Update
- Jack Kilby STEM Day Sponsorship
- Education Apprenticeship Fairs, Education
- Talkabroad Access, Foreign Languages
- WW1 Museum Trip, History
- Graphing Calculators, Mathematics
- Cadaver Dissection Trip, Science

SPECIALTY SCHOLARSHIPS

- Barton Bound Scholarship Supplement
- Correctional Student Scholarships
- On-Campus Summer Class Scholarship

FINE AND PERFORMING ARTS

- Musical Sponsorships, Theatre
- Raku Kiln and Clay Wedger, Ceramics
- NYC Dance Studio Classes, Dance
- Jazz Festival, Music
- Plaster Casts, Visual Arts
- Digital Photography Equipment
- Fine Arts Auditorium Light Board
- Shafer Gallery Outreach and Events
- Microphone and Monitor, Music
- Instrument Lockers, Music

STUDENT ASSISTANCE

- Cougar Supply Den
- Student Emergency Assistance Fund
- GED Testing Fee Assistance
- Golf Cart for Campus Accessibility

WORKFORCE TRAINING

- Agriculture and Transportation Complex
- Birthing Simulator, Nursing
- Dilation Charts, Nursing
- Apex Officer Simulator, Criminal Justice
- Faculty Education, Nursing
- Fetal Development Models, Agriculture
- Student Leadership Training, Business
- Laryngoscope, EMS
- Carpentry and Plumbing Tools
- Geriatric Mannequin Kits, Nursing
- Electrical Books, OSHA
- Healthcare Student Conference
- Referee Equipment, Physical Education
- Digital Opportunities to Connect Kansans (DOCK) Matching Grant

Agriculture and Transportation Complex opens

PROJECTS

Building on last year's efforts, the Foundation proudly supported the development of Barton's Agriculture and Transportation Complex, which celebrated its grand opening in July 2024.

The Foundation's "Grow With Us" capital campaign was instrumental in meeting the 1:1 grant match required to secure funding for the facility's construction. In addition to external fundraising efforts, the Foundation honored past donors by

utilizing donor-directed endowment funds to support the project in alignment with the donors' original intentions. Contributions from the Employee Giving Campaign further bolstered this initiative, making the complex one of the two most-supported designations among Barton employees.

This facility offers students in agriculture and transportation programs modern spaces for hands-on learning and skill-building. As the home of Barton's newest certificate program, the Ag Mechanics Top Tech Program, the complex provides specialized instruction designed to meet the growing workforce demands of regional industries.

Located on 11 acres on the east side of the Barton County campus, the Agriculture and Transportation Complex includes three classrooms, four dedicated shop spaces, CDL vehicle and equipment storage, corrals, instructor offices, a loading dock, a semi-truck weight scale, and a state-standard CDL examination testing area for local licensure testing. The facility supports 13 certificate and degree programs within Barton's Agriculture and Industry Education Department.

Thanks to the collaboration of advisory boards, community partners, foundations, businesses, and individual donors, the facility began hosting its first classes in the spring of 2024.

GROW with us

In the spring of 2022, Barton received an opportunity through a large matching grant from the Kansas Department of Commerce. This grant provided the means to construct an agricultural teaching facility on campus to address critical student and community needs. However, the grant required a 1:1 local match, tasking us with raising \$1,843,594 to bring the project to fruition.

To meet this ambitious goal, the Barton Community College Foundation launched the "Grow With Us" capital campaign. This structured initiative not only provided a clear roadmap for fundraising efforts but also ensured effective resource management throughout the building process.





Barton Agriculture and Transportation Complex: The ribbon cutting for the Agriculture and Transportation Complex was hosted by the Great Bend, Hoisington, and Ellinwood Chambers of Commerce in July 2024. Board of Trustees Chair Mike Johnson performed the honors of officially opening the building for classes. *(Bottom of page)*



KanEquip Learning Center: KanEquip has been a vital partner in the planning of the facility and the development of the Ag Mechanics Top Tech program. They generously sponsored the Top Tech classroom, now named the KanEquip Learning Center. Scott DeWerff, General Manager of the Great Bend store, cut the celebratory ribbon alongside other KanEquip representatives from across the region. *(Top left)*



Glenn and Elaine Mull Agriculture Center: The Mull family contributed significantly to the capital campaign, honoring Glenn and Elaine's legacy by naming the Animal Science Lab, Crop Protection Lab, and both classrooms as the Glenn and Elaine Mull Agriculture Center. Jeanine Haynes, Glenn's sister, performed the ribbon-cutting ceremony to mark this special occasion. *(Middle left)*

L.L. Alban Transportation Training Center: The Barton Foundation Board of Directors honored Lois Alban's incredible contributions to the Barton County campus by naming the CDL shop and state CDL license testing pad the L.L. Alban Transportation Training Center. First Vice Chair of the Board, Nancy Sundahl, led the ribbon-cutting ceremony. *(Bottom left)*

Merlin and Nelva Grimes Memorial Corrals: Still in construction, the facility will include corrals with a chute system leading livestock into the Animal Science Lab. These corrals are made possible by a generous gift from Nelva Grimes in memory of her late husband, Merlin, whose dedication to agriculture continues to inspire our region. *(Not pictured)*



SCHOLARSHIPS

CHANGE LIVES

10

155
students

\$232,617
in scholarships



2023/24 scholarship awards

Amos Bayer Memorial Scholarship

Ariana Al-Rudan
Stephan Baldwin
Sophia Benjamin
Vaneza Castillo
Joyce Cunningham
Kirsten Gabel
Michael Lowas
Tamara Robertson
Darien Sanchez

Bank of America Scholarship

Mariah Viegra

Barton Community College Foundation Memorial Scholarship

Mason Cox
Ana Alice Pauli Tosetto

BEST (Barton Enhancement & Scholarship Team)

Wade Potts

Black Hills Energy Scholarship

Cohen Suchy

Brad and Sarah Shirer "Old Bill" Honorarium Scholarship

Elizabeth Ducote
Keith Dunn
Henrique Freitas Vera Cruz
Jason Mireri
Jesse Muttai
Ana Alice Pauli Tosetto
Hunter Smith
Vanessa Thomas
Mariah Viegra

2023/24 scholarship awards

C & R Schauf Foundation Medical Scholarship

Leticia Flores-Stembaugh
Jessica Fuentes
Heather Greenstreet
Allyson Kaiser
Audrey Lancaster
Karina Lopez
Luis Pando
Brooke Ricke
Alidsha Vazquez Centeno
Amanda Welcher

Cashco Welding Scholarship

Cole Brown
Kaden Foster

Charlie Brown Life Sciences Scholarship

Brooklin Morgan
Makeila Straub

Clarence and Lucile Lebbin Memorial Scholarship

Brittany Simpson

Clifford and Pauline Getz Scholarship Program

Jose Carrillo
Chandra Ehler
Sydney Johnson
Alicia Mitchell
Elena Taboada

Craig and Jolene Biggs Endowed Scholarship

Grant Nottlemann

Danny and Darlene Biggs Nursing Scholarship

Enrique Martinez Renteria

Danny and Darlene Biggs Scholarship

Austin Nitcher

Donna Schmidt Memorial Scholarship

Christopher Morgan

Elsa Hiatt Academic Scholarship

Taylor Alloway

Equity Bank Emerging Leader Scholarship

Logan Erway

Ernest and Ila Grossardt Memorial Endowment

Kooper Maneth

Farmers Bank & Trust Financial Management Scholarship

Chloe Schenk

Frank (Ryan) Vondra Endowed Scholarship

Gisela Jaquez

Frank and Lelia Smith Scholarship Fund

Breyanna Baize
Haley Feldmann
Silvana Jacquez Viveros

Frank J. Dome Memorial Scholarship

Heather Ramirez

Fred and Renee Schmitt Memorial Scholarship

Elsasildai Lopez

G.E. and Lois Alban Academic Scholarship

Cassidy Goans
Harley Headley
MeKelle Hurlbut
Boris Peranovic

Genevieve Schulz Memorial Scholarship

Randa DeWeese

George and Cleo Tregellas Scholarship in Music

Samantha Haney
Claire Holt

George Tregellas Chairman's Scholarship

Courtney Lines
Wyatt Trombley

Glen and Dorothy Schuetz Family Scholarship

Paige Mink

Golda Underhill Bailey Memorial Scholarship

Christopher Morgan
Kassidy Nixon
Joseph Rolf
Kamron Stude

Grant Lee Hoener Memorial Scholarship

Clara Barbosa Hernandez

Gus and Ethel Gagelman Memorial Scholarship

Katelyn Petrik

J.A. Mermis, Jr. Memorial Scholarship

Neal Keller
Kassidy Nixon

Jackie Elliott Student Support Scholarship

Evelin Valadez

Jess E. Darnall Scholarship

Marissa Reeve

Keith and Marian Mull Endowment for Academic Studies

Dylan Mawhirter

Kirkman Endowment for Academic Studies

April Hough
Cooper Tabor

The Kummer Family Scholarship

Joseph Rolf

Landon Unruh Memorial Scholarship

Wyatt Yetter

Larry and Kathy Schugart Scholarship

MeKelle Hurlbut

Larry Zinn Scholarship

Taylor Croisant
Easton Fitzpatrick
Karley Stukey

Lee Turner Endowment

Kelly Gallacher
Angel Lopez
Allison McReynolds

2023/24 scholarship awards

Les and Carol Hopkins Scholarship

Luis Holguin

Loren and Maxine Pease Scholarship

Joseph Moeder
Evelin Valadez

Louis S. and Mary L. Kinzel Family Memorial Scholarship

Aaron Deason
Aracely Talamantes Flores

Lynn & Hazel Duke Scholarship

Enrique Martinez Renteria
Paige Mink

M.E. "Eustace" Marmie Memorial Scholarship

Emilee Hall

Maloy and Pauline Breitenbach Allied Health Scholarship

Jaycob Brown

Mamie Robl Memorial Endowment

Dakota Aumiller
Brynn Eades
Katie Mongeau

Marian Isern Scholarship Fund

Tamari Howard
Xanna Smith

Marilyn K. Funk Charles Scholarship

Roy Lovegrove

Mary King Fine Arts Endowment

Madison Franks
Braylie Krone
Anilec Rios

Melina Chavez Memorial Scholarship

Ciara Espinoza
Ian Jennings
Brooke McReynolds
Blaike Parsons
Edgar Perales
Johana Perales
Ellie Peters
Kimberly Reyes Pilo

Monica Bell Reser Memorial Scholarship

Luciana Braga

Nell Lyons Scholarship

Dakota Aumiller
Joseph Moeder

Ralph and Michael J Raffelock Memorial Endowment

Kamron Stude

Ramona J. Goering Keenan Memorial Music Scholarship

Kaden Baird
Gisela Jaquez
Carolina Ramirez Hernandez

Regina Ault Memorial Scholarship

Mollie Davis
Daniel Hammeke
Jamie Lewis
Sadi Strain-Shepherd

Richard and Linda Kimple Scholarship

Genesis Trowbridge

Robert Bonomo Memorial Scholarship

Katie Mongeau

Roger and Mary Lou Murphy Endowment

Darian Haynes

S. Larry Edwardson Memorial Scholarship

Natalie Bayona
Aliyah Fryberger
Bradley Heine
Daegan Johnson
Veronica Wiley

Schmidt Foundation Scholarship

Jenna Dean
Matthew Donecker
Andrea Orona Favela
Ashton Waggoner

Silver Cougar Club Scholarship

Selena Armstrong

Superior Essex Academic Award

Madison Franks

Tony and Edna Schartz Memorial Scholarship

Catarina Tribst

Verna S. Davis Memorial Scholarship

HaLena Lykins

Virgil and Eloise Belford Scholarship

Sienna Cauley

The Williams Scholarship

Edwin Chavez



Setting up a scholarship fund is a meaningful way to give back to your community or to honor a loved one, friend, or group.

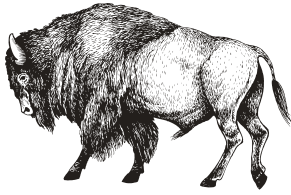
For information about how to create an endowed or annually funded scholarship for Barton students, contact the Foundation at (620) 786-1136 or foundation@bartonccc.edu

PEOPLE

THAT MATTER

Donors, volunteers, students, faculty, staff, board members, and partners make the change you see reported here. Each person believes in our mission and makes it a reality through their support in whatever area they're involved in.

We are so thankful for you.



Jan and Larry Westfall recognized with Old Bill Honorarium

The “Old Bill” Honorarium was dedicated to Jan and Larry Westfall during the 2023 Big Benefit “Casino Royale” Auction and scholarship donations were made in their honor.

Starting in 1978 with the donation of a mounted buffalo head, named “Old Bill”, this tradition has become a highlight of the auction, allowing attendees to donate directly to student scholarships in honor of a carefully selected individual, couple, or family. The Foundation Board of Directors takes great care in selecting the honoree(s) each year.

\$11,500 was raised for the Old Bill Honorarium in honor of the Westfalls and given to students through scholarships for the 2024-2025 school year.

Jan has had a love of Barton since attending to get her associate’s degree.

“Barton has a special place in my heart because of the experiences I had there,” Jan said. “I will never forget the way I felt supported at Barton and I know that’s just what Barton does and how they operate. They care.”

Larry cares for the students and



their future, as individuals, and in our communities.

“It’s all about paying it forward. If we can help one student, it’s worthwhile,” Larry said. “And the economic impact on Great Bend and the surrounding communities is essential. It’s affordable to students and helps them on their path in the workforce.”

Lindsey Bogner, Foundation Executive Director, said the Foundation was excited to honor the Westfalls for their years of positive influence and involvement with the college.

“Jan has been such an influential piece of the Foundation, serving on our board multiple times. She is always a leader in action through all of the events and campaigns, and

Larry has been there every step of the way, supporting our initiatives,” said Bogner. “It is such an honor to recognize both of them for all of their years of dedication to our cause.”

Jan has been involved for many years, but her driving reason today is the quality of leadership across Barton’s many campuses.

“Barton has always been innovative – ahead of the curve. We’ve been on the forefront of educational excellence with online, with vocational technology, with programs that cater to the Barton student whoever and wherever they are. That’s a testament to the forward-thinking leadership and the dedication to quality and accessibility, no matter a student’s educational goals.”

Lois Alban leaves a legacy: the largest gift in the history of the College

Lois Alban and her late husband, Gerald (Jerry), started a decades-long tradition of supporting the Barton Foundation in 1989 when they first attended the Big Benefit Auction and later began participating in the Academic Enrichment Fund. In 1993, they established the G.E. and Lois Alban Academic Scholarship to benefit students majoring in business or fine arts.

Jerry passed away in 1997, but Lois continued to promote academic

opportunities for students for decades to come. She later informed the Foundation about her intention to provide a portion of her estate in her trust as a gift.

Lois, age 97, passed away in April 2023 in Springfield, MO.

The gift she left to the Foundation totals over \$1.5 million, and the Foundation has created an unrestricted endowment, as she requested, to support Barton programs named the L.L. Alban

Memorial Endowment.

Lois was a firecracker of a lady working in a man's world in the transportation industry, often corresponding and setting up meetings as "L.L. Alban" so people didn't know she was a woman until she arrived. In honor of her spirit and longstanding work as a businesswoman in that industry, the Foundation has dedicated the first five years of investment earnings from her gift to name the CDL shop and license testing pad at



Barton's new Agriculture and Transportation Complex as the "L.L. Alban Transportation Training Center".

Lois's legacy lives through the thousands of students that pass through the halls at Barton Community College and will continue to inspire us all for generations to come.

Barton Legacy Society

Honoring those who continue to impact Barton in ways too numerous to count, both before and after their passing. These generous individuals have had the foresight to provide the gift of education to those that will come after them by creating trust, estate, or planned gifts to Barton Community College Foundation to continue building their legacy.

Lois Alban+
 Elmer and Frances Amerine+
 Anonymous
 Regina Ault+
 Billie Bonomo
 Neva and L.E. Brocher+
 Gary and Anna Burke+
 Jean Cavanaugh+
 Jess E. Darnall+
 Verna S. Davis+
 Irva E. Fair Drews+
 Quentin Dressler+
 Lynn and Hazel Duke+
 Alice M. Dundas+
 Chrissie Roe Evans and Dick B. Evans+
 Jerry E. Felkel+
 Clifford and Pauline Getz+
 Phil and Kim Grossardt

Clarence A. and Jeanette K. Haak+
 Leila and D.W. Hamilton+
 Elsa Hiatt+
 Graydon Johnson+
 Dr. Bill King+
 Bryan and LaVerne McCullough+
 Bill McKown+
 Loren and Maxine Pease+
 Linda Lea Rasek+
 Mamie Robl+
 Grace Rowden+
 Ray "Jiggs" Schulz+
 Frank and Lelia Smith+
 Golda Underhill Bailey+
 William C. Wells+

+ deceased

• Distinguished Service Award recipient(s)

Jim and Kathi Armatys receive the 2024 Distinguished Service Award at Barton's commencement

DONORS

16

The Barton Community College Foundation honored Jim and Kathi Armatys with the 2024 Distinguished Service Award in May during the annual commencement ceremony. Jim and Kathi are esteemed community members whose unwavering dedication has significantly enriched the missions of Barton and the Foundation.

After moving to Great Bend in 1987, Jim and Kathi quickly became involved in college events,

attending basketball games and fundraising events and enjoying theatre productions.

Since the 1990s, the Armatyses have served as volunteers, directors, chairs, and advisors. Kathi co-chaired two consecutive Big Benefit Auctions for the Foundation in 1993 and 1994 and served as a Director on the Foundation Board from 1999 to 2005. In 2007, Jim and Kathi served as honorary chairs of the Academic Enrichment Fund campaign,

showcasing their enduring care for Barton students.

In addition to their personal support, Jim is celebrating his 40th year with Edward Jones. He serves as a financial advisor, empowering others in our community to maximize their philanthropic giving to the Foundation.

He said he appreciates the well-rounded approach the College has taken to educate its students.

“We have always been impressed with the mission to nurture not only academic growth but also social and cultural development,” he said. “Equipping students with the essential skills to navigate the workforce successfully.”

Kathi echoed this sentiment and said she recognizes the power of a college education.

“Each diploma earned at Barton represents a triumph, giving graduates the tools to confront the challenges of today’s world,” she said.

Together, Jim and Kathi champion the Foundation and College’s initiatives, building a culture of empowerment within our community. Their commitment to expanding opportunities underscores their belief in the transformative impact of education.

“The high cost of education often puts it out of reach for many,” she said. “It takes all of us, through our committed support, to open doors for our friends, neighbors,



Pioneer Society Members

Barton Community College Foundation is recognizing and honoring the generous thinkers that came before us and paved the way for us to follow. These were the very first endowed funds created (1967-1982) to build the Barton Community College Foundation and have become the guiding star to those that follow after.

These funds and these families and donors have made an impact and it is measured in generational change instead of years. The long-reaching effect of these funds is felt in individuals and families across our communities, our state, our nation, and our world through scholarships and grants to improve the education experience of thousands of students.



Grant Lee Hoener Memorial Scholarship

Grace and Clay McConnell Memorial Scholarship

Helen M. Koopman Memorial Scholarship

George and Ruth Murdy Memorial Scholarship

Neva and L.E. Brocher Scholarship

Genevieve Schulz Memorial Scholarship

The Kummer Family Scholarship

Elsa Hiatt Academic Scholarship

Stanley & Elizabeth Post-Kimple Memorial Scholarship

F.D. Forbes Scholarship

Dr. Raymond J. Leiker Scholarship for MLT Studies

Monica Bell Reser Memorial Scholarship

William and Johanna Rinker Nursing Scholarship

Marian Isern Scholarship Fund

J.A. Mermis, Jr. Memorial Scholarship

Marlene Morrison Endowment Fund

Bryan and LaVerne McCullough Endowment

Don and Phyllis Whelan Academic Award

“Each diploma earned at Barton represents a triumph, giving graduates the tools to confront the challenges of today’s world,”

Kathi Armatys

and fellow community members to pursue their goals, improve their lives, and effect positive change in the communities we call home.”

They are the parents of three children, Michael, Todd, and Kristyn, and they have six grandchildren. Their children were able to complete Barton classes before attending K-State, and they currently have a

grandson attending classes at Barton.

Their years of service and enduring legacy resonate across our campuses, enriching the lives of countless individuals and shaping the future of Barton Community College. The Foundation is honored to recognize Jim and Kathi with this award.

The Distinguished Service Award was created in 1981 to recognize individuals who have shown genuine regard for and performed outstanding service to Barton Community College.



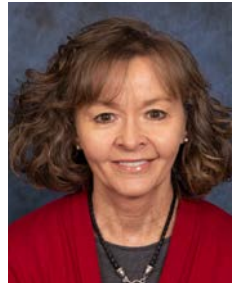
BOARD OF DIRECTORS



Jay Luerman
2025 Chair



Nancy Sundahl
2025 1st Vice Chair



Sonya Rein
2025 2nd Vice Chair



Dennis Sherman
2025 Immediate
Past Chair



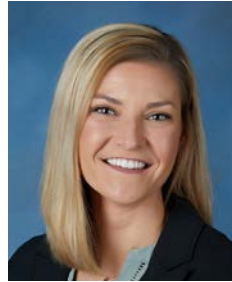
Rick Bealer



Jolene Biggs



Mandy Hoffman



Tarynn Kirmer



Karen Lindberg



Steve Webster

2025 INCOMING DIRECTORS



Brad Shirer



Kenny Vink

2024 OUTGOING DIRECTORS



Mac Holman



Chuck Fellhoelter



Kevyn Soupiset



Rob Munden

NUMBERS THAT MATTER

Being fiscally responsible is paramount in our operations. Normally, we would say that numbers don't matter, but here they very much do. Being faithful stewards of the resources entrusted to us is our commitment to our donors.

We've included financial information about our 2023-2024 year, events, and funds over the next few pages.

BARTON COMMUNITY COLLEGE FOUNDATION

Statement of Financial Position

June 30, 2024 and 2023

<u>ASSETS</u>		
	2024	2023
Current Assets		
Cash	\$ 157,296	\$ 200,932
Investments	5,926,368	4,208,722
Interest and Dividend Receivable	33,783	835
Current Unconditional Promises to Give	29,220	40,000
Inventory	15,026	-
Total Current Assets	6,161,693	4,470,030
Other Assets		
Beneficial Interest in Remainder Trusts	536,451	483,368
Beneficial Interest in Assets Held by Golden Belt Community Foundation	16,954	15,805
Restricted Endowment Investments	6,265,198	5,708,685
Book Collection and Permanent Art Collection	950,984	902,519
Total Other Assets	7,769,587	7,110,377
Total Assets	13,931,280	11,580,407
<u>LIABILITIES</u>		
Current Liabilities		
Accounts Payable	12,760	1,050
Total Liabilities	12,760	1,050
<u>NET POSITION</u>		
Net Assets		
Net Assets Without Donor Restrictions	3,604,780	1,816,286
Net Assets With Donor Restrictions	10,313,740	9,763,071
Total Net Position	13,918,520	11,579,357

BARTON COMMUNITY COLLEGE FOUNDATIONStatement of Activities
For the Year Ended June 30, 2024

	2024	2023
Operating Revenues		
Public Support		
Contributions and Fundraisers	\$ 2,828,620	1,986,449
Other Income	159	1,449
Total Public Support	2,828,779	1,987,898
Nonoperating Revenues and Gains		
Net Investment Income (Loss)	1,562,605	960,784
Total Revenues	4,391,384	2,948,682
Expenses		
Program Services		
Scholarships and Program Enhancements	1,794,610	1,249,162
Support Services		
Management and General	136,248	133,182
Fundraising	121,362	89,745
Total Support Services	257,610	222,927
Total Expenses	2,052,221	1,472,089
Change in Net Assets	2,339,163	1,476,593
Net Assets - Beginning of Year	11,579,357	10,102,764
Net Assets - End of Year	13,918,520	11,579,357



14th Annual Sporting Clay Shoot

April 21, 2024

REVENUE

Event Sponsorships	17,800
Shooter Registrations	20,600
Raffle	3,385
Flurry Competition	990
Other Sales	1,785
	<hr/>
	44,560

EXPENSES

Course Management	9,498
Lewis and Flurry Payouts	2,488
Top Score Prizes	1,350
Raffle Item(s)	1,200
Meals	2,834
Supplies & Advertising	1,920
Judges	650
	<hr/>
	19,940

NET REVENUE \$24,620

Funds raised are used for the Faculty Mini-Grant Program

44th Annual Big Benefit Auction

August 26, 2023

REVENUE

Event Sponsorships	17,850
Item Sponsorships	6,240
Auction Sales	27,455
Old Bill Honorarium	11,500
Ticket Sales	10,500
Golden Ticket Sales	3,750
Bar Sales	584
	<hr/>
	77,879

EXPENSES

Venue and Decor	1,839
Meals and Drinks	5,970
Auction Packages	5,823
Golden Ticket Winner	1,000
Labor and Planning	421
Promotion	422
Sales Tax	1,391
	<hr/>
	16,866

NET REVENUE \$61,013

Funds raised from the auction are used for program, project, and facility enhancements across all Barton campuses.

The Old Bill Honorarium funds are used to give scholarships in the name of the honoree(s) for the next school year.



NEW FRIENDS AND FUNDS

Each year, the Foundation grows with addition of different named funds. This year, we added 6 new funds from new and old friends, and we are so glad that they're here with us!

ANNUAL FUND

Rosemary Moore-Gill Art Scholarship

After the passing of Rosemary Moore-Gill in July of 2023, her children selected the Barton Foundation for her memorial donations. Rosemary was a creative soul and took art classes at Barton. Her family has set

up an annual scholarship for students in the Visual 2D/3D Art program. We are honored to celebrate Rosemary's memory with scholarship awards to students blossoming into artists.

ENDOWMENTS

L.L. Alban Memorial Endowment

Lois Alban was a cherished friend of the Foundation and member of the Barton Legacy Society, recognized for her commitment to arranging an estate gift to the Foundation over a decade ago. With her recent passing, Lois's extraordinary legacy gift has become the largest single donation in the history of the Foundation and College. In honor of her remarkable life, the Foundation was proud to establish a named endowment in her memory, which will remain unrestricted in perpetuity, as she wished.

ensure their legacy of veteran support would live on. Using the chapter's existing scholarship fund, they established this endowed scholarship, dedicated to supporting active duty veterans from Barton, Stafford, Rice, and Pawnee counties. The scholarship prioritizes veterans with financial need and gives preference to those who have families and/or children.

Phil and Kim Grossardt Endowed Scholarship for Health Professionals

Phil and Kim Grossardt have been dedicated supporters of Barton for decades, generously giving their time, talent, and resources. Recognizing the need to increase the number of healthcare professionals in our region, they saw Barton as the ideal starting point - both for quality education and meaningful connections. To support this vision, they established an endowed scholarship for students pursuing health-related fields, awarded to those with a 3.5 GPA or higher, with preference given to applicants from outside Barton County. This scholarship not only draws students to our community but also encourages them to stay, addressing our critical healthcare workforce shortage.

Linda Lea Rasek Memorial Endowment

Linda Rasek, a dedicated local teacher who even taught courses at Barton for a time, moved to Hutchinson later in life and passed away in May. In an extraordinary gesture, Linda had named the Foundation as the payable-on-death beneficiary for two IRAs - an estate gift previously unknown to us. We have inducted her into the Barton Legacy Society posthumously. Her generosity has created an enduring legacy that will support Barton students and programs in perpetuity.

Betty Erikson Memorial Scholarship

In memory of Betty Erikson, a beloved mother, friend, musician, and teacher who passed in January 2024, her family established an endowed scholarship to support students in Barton's music program, with a preference for vocalists. Contributions from family members and the community have helped build this fund to honor Betty's lifelong dedication to inspiring musicians across our region and at Barton Community College. We are privileged to celebrate her legacy through this scholarship.

Disabled American Veterans (DAV) Chapter 27 Scholarship

When the Disabled American Veterans (DAV) Chapter 27 closed, its members were determined to

GIVING BACK MAKES
A DIFFERENCE.

**YOU MAKE A
DIFFERENCE.**

WAYS TO GIVE



Create a Named Endowment Fund

Creating an endowment is a way to leave a permanent legacy supporting the education of thousands through generations at Barton. An endowment fund is created by donating at least \$10,000, which is held as “principal.” That principal is then invested and the Foundation

uses the earnings from the investment to follow your intention. Additional gifts can later be made into the principal or for use immediately, depending on your philanthropic goals. The original principal must be funded within five years.

SCHOLARSHIP

Each scholarship endowment is set up with your intentions for the type of student you would like to support. The “award criteria” can be based on where the student resides or graduates high school, their academic performance, major/program of study, and/or financial need, among other options. The less restrictive the fund, the more students are eligible for assistance from that fund. Each January, we determine the scholarship projection amount based on the calendar year-end balance of earnings in the fund and the intended payout.

ENHANCEMENT

Enhancement endowments are set up with your goal to support equipment, facilities, programs, and projects to make Barton better. These endowments are available whenever a project at Barton needs additional capital to that available from the general operating budget of the college. A simple example would be an equipment endowment for a specific department; another example would be general support for a specific program or initiative. The Foundation uses an open proposal system to identify and determine the fund matches.

MIXED USE

You can set up this type of fund to be used for scholarships and enhancements, with awards based on the criteria you set up. An example would be an endowment that provides scholarships and program grants to a specific department. This type of fund can also be completely unrestricted – you set up the fund and allow the Foundation to designate its use to wherever the college needs it most.

Create a Named Annual Scholarship Fund

Annual scholarships are set up if you would like to create a scholarship for a limited amount of time or do not want to restrict a principal. Each year, you donate the amount

that we use in scholarship awarding the next year. You can pledge to give for whatever length of time works best and we can invoice you on an agreed-upon schedule.

Give an Outright Gift

An outright gift makes an immediate impact in the area that you want to support. This type of gift can be made in many types of giving vehicles described below and can be unrestricted or restricted. These are often the easiest gifts to make because they can be simple and

quick, or they can be as restrictive as you would like. Depending on the complexity of your restrictions we may or may not need a gift agreement detailing specific details of the gift and usage.

DONATION

Donations of cash, check, or stock/securities can be made at any time as an unrestricted gift or to any program, initiative, or project you would like to support. These gifts will be available for use immediately to the designated area.

EVENT SUPPORT

Sponsorships and donations to our fundraising events help us to get our message out publicly and raise more funds. Your donation to our event can be made with cash/check/credit card or in-kind items. Your attendance is also welcome!

PLEDGE

Pledges are promises to pay over a period of time instead of in a one-time gift. Pledges are a useful tool for you to support projects on a longer term and allow you to give more over time instead of a large amount all at once. Pledges can be unrestricted or designated to any program, initiative, or project you would like to support; they are also incredibly helpful for large capital campaign projects.

REAL PROPERTY

Real property can be items, equipment, real estate, and so much more. A gift of real property can be useful for a specific department; for example, a piece of equipment for a technical program allows students to gain skills working with equipment they will see in their industry or a piece of property that the college can use in instruction. Real property also includes commodities or real estate that the Foundation can sell and the proceeds can be used to follow your intentions.



Make a Planned (Deferred) Gift

Planned gifts are deeply personal, and allow you to consider the wellbeing of your heirs and the causes you want to support. The options are numerous when making planned gifts, and should always be coordinated with your loved ones and, depending

on complexity of your estate, with an estate planning attorney. In addition to leaving a legacy at Barton, you will be recognized (if you so choose) in our Barton Legacy Society recognizing and celebrating donors who make gifts in this way.

BEQUEST

A bequest is a gift made as part of a will or trust. You can make multiple bequests in your estate plan, providing for your heirs and any causes you want to support. Bequests can be set up multiple ways:

- General bequests are monetary gifts from your estate's general assets.
- Demonstrative bequests are monetary gifts from a specific account.
- Specific bequests are a specific item, property, or amount from your estate.
- Residuary bequests are monetary gifts made after all debts, expenses, and other bequests are made from an estate, and are typically a percentage of the remainder of the estate.

BENEFICIARY DESIGNATION

Accounts like individual retirement accounts (IRAs) and 401k or 403b retirement accounts require that you set up a beneficiary, and bank and investment accounts can be set up likewise (sometimes called "payable on death" beneficiaries). You can choose to set up these accounts with the Foundation as the beneficiary and let us know about your intentions so that we can follow your wishes.

LIFE INSURANCE

Life insurance gifts can be set up as a beneficiary designation or can be purchased by you with the Foundation as the owner of the policy of the whole or universal policy. The premiums on this type of policy are tax deductible and provide for a guaranteed gift upon your passing to the Foundation to be used in accordance with your wishes.

REAL ESTATE AND RETAINED LIFE ESTATES

Gifts of real estate can be made during your life for the tax benefits and then you (or someone you designate) can continue to live/work on the property until a time specified by you or until your passing, providing the Foundation with a valuable gift while still providing for you and/or your heirs. After the agreed upon time, the Foundation can use the property or sell and use the proceeds according to your wishes.

CHARITABLE LEAD OR REMAINDER TRUSTS

Charitable trusts are a great way to provide for you and/or heirs while also making a gift to the Foundation. The difference between these two options is when the Foundation receives the gift.

- A charitable lead trust is an irrevocable trust designed to provide financial support to the Foundation for a period of time, with the remaining assets eventually going to family members or other beneficiaries. It can potentially provide benefits such as an income tax deductions or estate or gift tax savings on assets ultimately passed to the individuals designated as remainder beneficiaries.
- A charitable remainder unitrust is an irrevocable trust that provides an annual income for you or other beneficiaries, with the remaining assets donated to the Foundation at the trust's end (up to 20 years). Payments are a percentage of the trust's fair market value, recalculated annually. If the trust's value increases, payments increase; if it decreases, payments decrease.



MISSION UPDATE

This year, the Foundation refined its mission, vision, and core values to better reflect the principles that drive our actions, decisions, and goals. We hope you see yourself in these aspirations, and we look forward to serving you and Barton students with these guiding principles at the forefront.

Mission

We inspire, connect, and support donors and friends of Barton Community College, strengthening the bond between the community and student success.

Vision

Fostering a culture of philanthropy that supports student learning and elevates the College as a premier leader in higher education.

Values

STEWARDSHIP

We uphold accountability in the careful and responsible management of resources to inspire donors and foster a culture of philanthropy for the benefit of the college, its students, and the communities we serve. This commitment strengthens the connection between the community and student success through the sound stewardship of relationships and assets entrusted to us.

COLLABORATION

We align ourselves with committed partners to work collaboratively towards success. Cultivating associations and connections, we emphasize the importance of relationships by respecting and embracing the strengths, perspectives, and talents of every partner. We promote an environment of cooperation, trust, and open communication.

INNOVATION

We enhance opportunities for students and the College by continuously identifying possibilities for advancement to elevate the College as a premier leader in higher education. Supporting new ideas and continuous improvement at Barton, we aim to transform lives and strengthen the communities we serve.



245 NE 30 RD • Great Bend, KS 67530

(620) 786-1136

foundation@bartonccc.edu



	Non-profit Org.
	U.S. Postage
	PA ID
	Permit No. 11
	Great Bend, KS

Non-discrimination Notice: Barton Community College is an equal opportunity provider and employer. Visit equal.bartonccc.edu for more information.

JOIN US! SAVE THE DATES

46th Annual Big Benefit Auction

August 23, 2025

Great Bend Events Center



15th Annual Sporting Clay Shoot

April 27, 2025

Camp Aldrich

