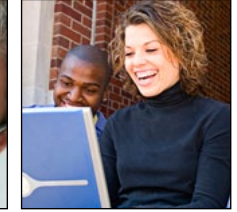
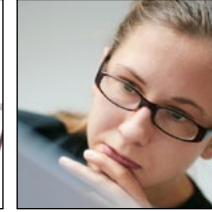
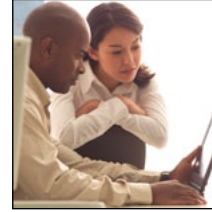
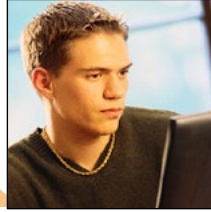


Fall

2012 SESSION 1

August 13 - October 14 (9 wks.)

BARTONline.org



Course #	CR	Title	Instructor	CRN
ACCT 1614	3	Accounting I	Boeger, Kathy	16250
ACCT 1618	3	Managerial Accounting	Boeger, Kathy	16251
ACCT 1640	3	Accounting-Business Opers	Kolinchak, Jennifer	16252
AGRI 1116	3	Prin of Agricultural Economics	Mills, J	16253
ANTH 1816	3	Cultural Anthropology	Ball, Jeri	16254
ANTH 1819	3	World and Regional Geography	Butler, Jerry	16255
BSTC 1001	3	Introduction to Computers	Siebold, Brenda	16256
BSTC 1027	3	Information Super Highway	Bias, Jim	16257
BSTC 1036	3	Computer Concepts & Appl	Siebold, Brenda	16258
BSTC 1685	3	Spreadsheet Applications	Siebold, Brenda	16259
BUSI 1604	3	Small Business Management	Steffey, Kara	16260
BUSI 1607	3	Business Ethics	DeFries, Trey	16261
BUSI 1647	3	Money & Banking	Shipman, Mark	16262
BUSI 1751	3	Small Business Records	Steffey, Kara	16263
BUSI 1780	3	Total Quality Management	Butler, Wynn	16264
BUSI 1803	3	Principles of Management	Steffey, Kara	16265
BUSI 1804	3	Human Relations in Business	Lundstrom, Joel	16266
CHEM 1802	5	Fundamentals of Chemistry	Causey, James	16267
CHLD 1500	3	Introduction to Early Childhood	Kasselman, Monica	16268
CHLD 1505	3	Preschool Child	Kasselman, Monica	16269
CHLD 1512	3	Child Abuse & Neglect	Niedenthal, Shara	16270
CHLD 1513	3	Child Play and Games	Kasselman, Monica	16271
CHLD 1553	3	Creative Experiences for Childrn	Niedenthal, Shara	16272
COMM 1200	3	Interpersonal Communication	Farmer, Gordon	16273
COMM 1217	3	Non Verbal Communication	Duncan, Alissa	16274
COMM 1220	3	Organizational Communication	Brooks, Barbara	16275
COMM 1230	3	Public Speaking	Duncan, Alissa	16276
CRIM 1606	3	Intro to Law Enforcement	Maner, Jim	16277
CRIM 1610	3	Criminology	Walters, Matthew	16278
CRIM 1612	3	Criminal Investigation I	Eaves, Martin	16279
CRIM 1623	3	Criminal Profiling	Maner, Jim	16280
ECON 1610	3	Principles of Macroeconomics	DeFries, Trey	16281
EDUC 1128	3	Foundations of Modern Educ	Sullivan, Ange	16282
EMHS 1900	3	Emergency Planning	Marmon, John	16283
EMHS 1909	3	Basic Skills in Emer Progrm Mgr	Prier, Steven	16284
EMHS 1910	3	Emergency Mgmt Seminar	Vanderlinde, Roger	16285
EMHS 1953	3	Adv Incident Comnd Systm EOC	Marmon, John	16286
EMTS 1555	3	Stress Mgmt for Emer Work	White, Karyl	16287
ENGL 1199	3	Prin Grammar Form & Style	Bradney, Kim	16288
ENGL 1200	3	Business English	Mooney, Renelle	16289
ENGL 1204	3	English Composition I	Heller, Sheyene	16290
ENGL 1205	3	Technical and Report Writing	Heller, Sheyene	16291
GRPH 1048	3	Multimedia Presentations	Bias, Jim	16292
HIST 1400	3	American History to 1877	Cox, Mike	16293
HIST 1404	3	American West	Vanderlinde, Roger	16294
HIST 1406	3	History of Kansas	Ball, Jeri	16295
HIST 1408	3	Western Civilization to 1500	Butler, Wynn	16296
HIST 1409	3	Hist & Phil Western Cul to 1500	Cloud, Gil	16297
HIST 1416	3	American Military History	Butler, Wynn	16298
HIST 1460	3	Military Hist/Amer Revolution	Farmer, Gordon	16299
HIST 1462	3	Military Hist/First World War	Kryschtal, Mike	16300
HIST 1463	3	Military Hist/Second World War	Cox, Mike	16301
HLTH 1248	3	Personal & Community Health	Kingslien, Gene	16302
HOME 1501	3	Basic Nutrition	Del Carmen, Denise	16303

Course #	CR	Title	Instructor	CRN
HZMT 1907	3	Resourc Consvr & Recov Act (RCA)	Truitt, John	16304
HZMT 1912	3	Industrial Hygiene/Toxicology	Septer	16305
HZMT 1925	3	OSHA Construction Industry	King, Dennis	16306
HZMT 1940	3	Introduction Ergonomics	Farmer, Robin	16307
LANG 1908	5	Elementary Spanish I	Oviedo, Blanca	16308
LEAD 1000	3	Intro to Leadership Concepts	Kryschtal, Mike	16309
LIFE 1402	5	Principles of Biology	Walker, A	16310
LIFE 1407	4	Anatomy & Physiology I	Rehmeier, Ryan	16311
LIFE 1413 (LEC)	3	Environmental Science L/only	Goymerc, Addie	16312
LIFE 1413 (w/LAB)	3	Environmental Science w/lab	Goymerc, Addie	16313
LIFE 1414	2	Environmental Science Lab	Goymerc, Addie	16314
LIFE 1426	3	Renewable Energy Sources	Nash, William	16315
LITR 1212	3	The Short Story	Davis, Charles	16316
LITR 1228	3	Intro to Drama	Davis, Charles	16317
MATH 1806	3	Technical Mathematics	Sullivan, Ange	16318
MATH 1809	3	BASIC Applied Mathematics	Wells, Patti	16319
MATH 1821	3	Basic Algebra	Sullivan, Ange	16320
MATH 1824	3	Intermediate Algebra	Goymerc, Addie	16321
MATH 1828	3	College Algebra	Sullivan, Ange	16322
MATH 1830	3	Trigonometry	Harrington, Jo	16323
MATH 1831	3	Business Calculus	Howe, Brian	16324
MATH 1840	3	Intro to Contempor Math	Sullivan, Ange	16325
MDAS 1619	3	Special Office Procedures-Med	Brennan, Kimberly	16326
MDAS 1672	3	Medical Terminology	Brennan, Kimberly	16327
MDAS 1680	2	Basic Pharmacology	Brennan, Kimberly	16328
MUSI 1002	3	Introduction to Music	Lewis, Gretchen	16329
NTWK 1050	3	Networking I	Pastran, Howard	16330
NTWK 1052	3	Microcomptr Repair & Upgrade	Bias, Jim	16331
NTWK 1059	3	Introduction to Networking	Nash, Marc	16332
OFTC 1601	3	Keyboarding I	Legleiter, Shanna	16333
OFTC 1696	3	Word Processing Applications	Maner, Jim	16334
PHIL 1602	3	Introduction to Philosophy	Mack, John	16335
PHIL 1604	3	Ethics	Cloud, Gil	16336
PHIL 1605	3	Argument & Reason	Mack, John	16337
PHSC 1404	3	Physical Geography	Butler, Jerry	16338
POLS 1800	3	Government of United States	Snow, Tish	16339
POLS 1801	3	Intro to Political Science	Kryschtal, Mike	16340
POLS 1815	3	Intro to UN & Internatnl Orgs	Snow, Tish	16341
PSYC 1000	3	General Psychology	Lundstrom, Joel	16342
PSYC 1006	3	Abnormal Psychology	Abbott, Christine	16343
PSYC 1012	3	Introduction to Counseling	Mansfield, Kim	16344
PSYC 1014	3	Developmental Psychology	Mansfield, Kim	16345
PSYC 1016	3	Social Psychology	Duley, Jared	16346
PSYC 1026	1	Psychology Grief & Separation	Christenson	16347
PSYC 1033	3	Psychology of Serial Killers	Lundstrom, Joel	16348
PSYC 1130	3	Death & Dying	Smith, Samantha	16349
RELI 1311	3	World Religions	Mack, John	16350
SOCI 1100	3	Introduction to Sociology	Abbott, Christine	16351
SOCI 1102	3	Marriage & Family	Abbott, Christine	16352
SOCI 1104	3	Contemporary Social Problems	Lundstrom, Joel	16353
SOCI 1114	3	Human Sexuality	Abbott, Christine	16354
SOCI 1129	3	Cross Cultural Awareness	Smith, Samantha	16355
STAT 1829	3	Elements of Statistics	Harrington, Jo	16356
STAT 1840	3	Busn & Economics Statistics I	Russel, K.	16357

Email us at: inquiry@bartonline.org

Phone us at: (877) 620-6606