

40 years of service

Barton Community College opened its doors to students for the first time in 1969. Founded by a group of businessmen in a downtown Great Bend café, Barton now serves over 13,000 students annually.

Through the years of change and innovation, one thing has always remained the same ... you can't hide the Cougar Pride!



Changing lives

Don't take our word for it, here's what our students say about Barton employees making a difference in their lives:



"Kristen Hathcock has a unique teaching style, a passion for teaching, and is accommodating to students' needs. Whether it's professional or personal, she has made an impression on me I'll never forget."

- DANIELLE REISNER, HOISINGTON, KS

"Barton was the best choice for me after high school. Because of Steve Dudek I found my passion for art. He not only gave me the confidence and guidance to pursue an art major, he was my teacher, mentor, and my friend."

- MICHELE YOUNKER, ELLINWOOD, KS



Living the dream!

Succeeding in class is important but so is succeeding in life. At Barton the knowledge you learn in the classroom will help you apply it to what really matters ... real life.

There are many benefits for students choosing Barton and usually differ according to one's needs, desires, and what one wants from the Barton experience.

For some, it's knowing the faculty and staff at Barton truly care about you as a person first and foremost.

The convenience of Barton's class scheduling is a plus for others. Whether you want face-to-face traditional classroom settings, online classes adapting to your busy schedule, or hybrid classes which blend classroom and online instruction, Barton has classes to fit your needs and schedule.

Barton also offers the opportunity to get job training quickly to help you either get to the workforce or improve your skills at your current workplace.

If you have the desire to have a dynamic and fun college experience, Barton provides opportunities to get involved, perhaps even "re-inventing" oneself. With over 30 clubs, organizations, and performance groups there is something for everyone to live the dream!

"Not only is Rick Bealer a great teacher, but he is the kind of person who cares about his students."

- KARA KELLISON, LAWRENCE, KS



FREE

- Cable
- Laundry facilities
- Internet Access
- Parking
- Movie Channel

WHAT DRIVES YOU?

College is what you make of it

- ### ACADEMIC ACTIVITIES
- Collegiate Music Educators National Conference
 - Concert Choir
 - Concert Band
 - Da Capo (Men's vocal ensemble)
 - Debate
 - Dolce (Women's vocal ensemble)
 - Forensics
 - The Hilltop Singers
 - Honors Program
 - The Interrobang (Student Newspaper)
 - Orchestra
 - Pep Band
 - Stage Band

Barton offers a wide variety of Student Services dedicated to assisting you in achieving greatness. Our services are designed to directly enhance student learning and support students' social and personal growth.

We are continually inspired by the energy, the diversity, and the possibility that our students bring to Barton. We can't wait to discover what you will create at Barton!

Academic Advising
Student-centered, advisor-driven system designed to increase student success and retention by promoting close and continuous contact between students, advisors, and the Barton student support structure.

Campus Security
Text messaging, surveillance cameras, and 24 hour security officers help ensure your campus life experience is safe.

- ### TRiO Programs
- Provides free services for eligible students to assist in meeting educational goals.
- Student Support Services
 - Educational Opportunity Center
 - Upward Bound Programs
- ### Tutoring
- FREE peer and professional tutoring during regular library hours.
- ### Counseling Services
- Professional and personal counseling is available to assist students with personal or academic challenges.
- ### Health Services
- Free basic services are provided by a full-time registered nurse Monday through Friday with after-hours emergency service available.



FINDING WHAT DRIVES YOU
Barton's Career Center provides resources to help you find part-time jobs, internships, and prepare you for life beyond college. More importantly, we want to help you DISCOVER YOUR POTENTIAL.

- ### STUDENT ACTIVITIES/ ORGANIZATIONS
- Alpha Sigma Lambda, Kappa Beta Chi Chapter
 - Adult Student National Honor Society
 - Collegiate Farm Bureau
 - Campus Christian Fellowship
 - Cheerleaders, Yell Leaders, and Mascots
 - Community Student Organization
 - Computer Club (BC4)
 - Cougar Danz Force
 - Hispanic American Leadership Organization (HALO)
 - Intramurals
 - Journalism Crew (J Crew)
 - Lambda Alpha Epsilon
 - Multicultural Society
 - Newman Club
 - Nursing Club
 - Phi Theta Kappa
 - Student Ambassadors
 - Student Senate
 - Technical Arts Club (TAC)



Striving for excellence

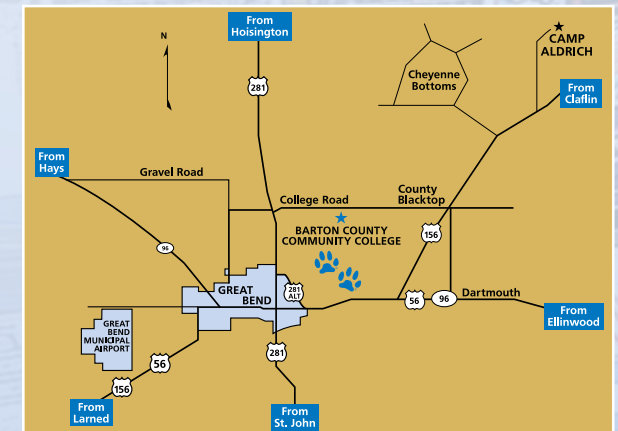
In 39 years of athletic competition, Barton has 54 national titles, 136 region or district championships, 152 conference championships, over 50 professional athletes, 22 Olympians, and 10 Olympic Medal winners.

- ### MEN'S SPORTS
- Baseball
 - Basketball
 - Cheer Squad
 - Cross Country
 - Dance
 - Golf
 - Soccer
 - Tennis
 - Track
- ### WOMEN'S SPORTS
- Basketball
 - Cheer Squad
 - Cross Country
 - Dance
 - Golf
 - Soccer
 - Softball
 - Tennis
 - Track
 - Volleyball

City of Great Bend

Listed as a "Best Places" city by U.S. News & World Report, come spend a day with great people in a great place ... Great Bend!!

With over 15,000 residents, visit Great Bend and find a wide variety of things to do while enjoying a small town with all the amenities of a small city.



- ### COMMUNITY EVENTS
- 3i Agriculture Show
 - Cinco de Mayo Celebration
 - Championship Drag Racing
 - The Barton County Fair with Fireworks Extravaganza
 - Juneteenth - Celebration of African American freedom and heritage
 - Polka Days
 - Community Theatre in the historic Crest Theatre
 - Barton County Historical Museum and Village
 - Big Bend Bike Rally



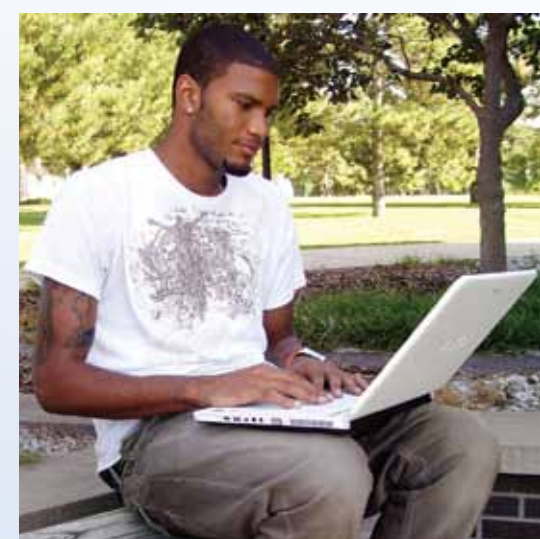
Wherever you are

HIGH SCHOOL "JUMP START" COURSES

Barton provides high school sophomores, juniors, seniors, and gifted underclassmen college classes while in high school.

Dual Credit/Concurrent Classes (College Advantage Program) - Barton offers college classes in your high school (within Barton's seven county service area).

Get Ahead Program (GAP) - Barton on-campus afternoon college courses are designed to give high school students a sneak peek of what to expect in a college class environment and coursework.



OUTREACH PROGRAMS

College courses are available in our seven-county service area and the Grandview Plaza/Junction City area. Degree completion programs are available at participating sites.

Online learning

We think you will find the overall cost very reasonable when compared to traveling and living on-campus at some colleges. Remember, you can be employed and study at the same time, because online courses can be taken around your busy schedule.

Each online learning entity charges one flat rate per semester credit hour, plus the cost of textbooks and additional materials. This fee is the same for all online students regardless of Kansas residency.

BARTONline.org
BARTONLINE: 877-620-6606
\$130 per semester credit hour

eduKan
EDUKAN: 877-433-8526
\$125 per semester credit hour

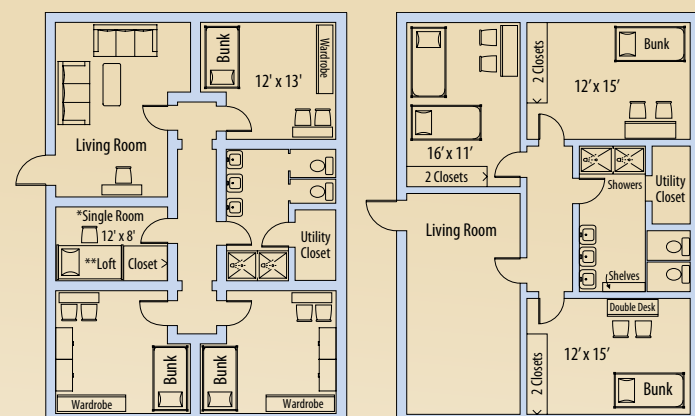
BARTONline.org provides you the opportunity to earn or complete an Associate Degree online. Courses taken at other colleges and universities, plus any military and work experience, may be applied towards degree completion requirements at Barton.

EduKan.org is an online consortium consisting of Barton and five other community colleges. EduKan provides you another opportunity with in the Barton family to obtain your Associate Degree online.

K-STATE AT BARTON

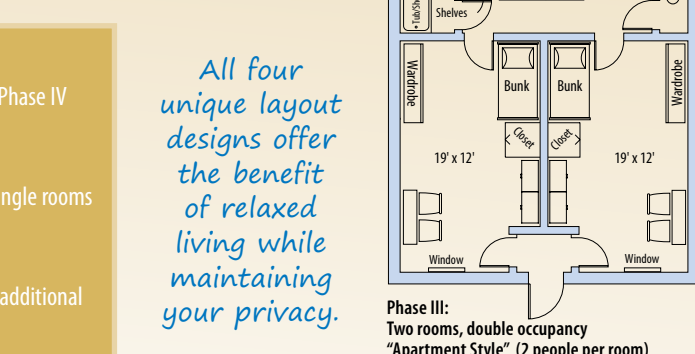
Kansas State University and Barton Community College have joined together to form the K-State at Barton partnership. This allows you the flexibility and convenience in pursuing additional educational opportunities without relocating to K-State's campus.

- The K-State at Barton partnership includes:
- Numerous 2+2 agreements which outline the courses or program of study a student takes at Barton and at K-State to finish their educational goals.
 - 10 online Bachelor's degree completion programs
 - 19 online Master's Degree programs
 - 1 online Ph.D. program
 - Provides area residents with opportunities for certification, professional development, and upper level credit course options.
 - Assists current Barton students with admission to Kansas State University
- For more information, contact Jennifer Pfortmiller at 620-786-1188 or by e-mail: jdunn@k-state.edu www.dce.ksu.edu/affiliations/barton

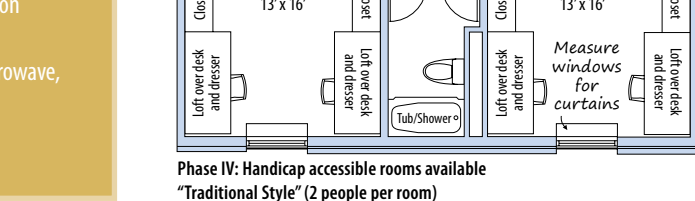


Phase I: There will be some variation between units *12 Single rooms are located in Phase 1. **Beds must remain lofted. *Community Style* (6-7 people per unit)

Phase II: There will be some variation between units *Community Style* (6-7 people per unit)



Phase III: Two rooms, double occupancy *Apartment Style* (2 people per room)



Phase IV: Handicap accessible rooms available *Traditional Style* (2 people per room)

All four unique layout designs offer the benefit of relaxed living while maintaining your privacy.



Make it happen!

Barton is driven to help make college affordable for everyone. With low tuition rates and various ways to help students, Barton wants to help ensure your focus is on your future.

With over \$6.5 million paid last year, opportunities exist to help ease your financial burden. Barton offers awards based on your academic achievement, involvement in student activities and organizations, as well as, offering student employment opportunities.

Students interested in applying for academic scholarships, activity scholarships, departmental scholarships, and federal financial aid are encouraged to apply early. Barton's academic scholarship deadline is March 15 so don't delay...apply today!

For more information about financial opportunities at Barton, see our Financial Aid brochure or contact the Financial Aid Office at (620) 792-9270.

2009-2010 Cost Information

LEGAL RESIDENCE IN KANSAS	
Tuition	\$49/credit hour
Fees	\$25/credit hour
LEGAL RESIDENCE OUTSIDE OF KANSAS	
Tuition	\$70/credit hour
Fees	\$25/credit hour
ANNUAL COST ESTIMATES (Kansas resident)	
Tuition & Fees	\$2,368 *based on 16 credit hours per semester
Books & Supplies	\$ 830 (estimated)
Residence Halls	\$4,392 (14 meals per week) *19 meal plan also available - \$4,472
TOTAL	\$7,590 (*Based on 14 meal plan)

The Barton Board of Trustees has the right to change tuition and fees without notice.



FINANCIAL AID TIP
In addition to Barton, check with your local high school counselor, chamber of commerce, churches, and civic organizations for additional scholarship opportunities.



Everyone should take the time to fill out the Free Application for Federal Student Aid. You may find out you qualify for federal grants, loans, and/or student employment. Simply go to: www.fafsa.ed.gov Barton's FAFSA code is: 004608



Barton's Academic Scholarships will be available for six full-time semesters. It will annually renew with your most current Barton GPA.

Barton's Academic Scholarships

*Additional Activity and Department scholarships are available!

Award	Award Amount	Kansas HS GPA	GED Score	ACT Score
Excellence Award	\$1,000	3.5 and above	3500+	26+
Honor Award	\$800	3.0 - 3.49	3250 - 3490	24 - 25
Achievement Award	\$500	2.5 - 2.99	3000 - 3240	22 - 23
Merit Award	\$250	2.0 - 2.49	2750 - 2990	20 - 21

The scholarship deadline is March 15, 2010 for the 2010-11 aid year.

Career Programs

Career programs provide educational opportunities to pursue one or two-year programs designed to provide knowledge and skills, which will prepare you for immediate employment.

- Agriculture Business Management (AAS)
- Auto Technology (AAS, CERT3)
- Business Management & Leadership (AAS)
- Business Administrative Technology (AAS)
- Business Technology (AAS)
- Computer Networking Specialist (AAS, CERT2)
- Corrections (AAS)
- Criminal Justice (AAS)
- Crop Protection (AAS, CERT1, CERT2)
- Dietary Manager (CERT1)
- Early Childhood (AAS)
- Emergency Mgmt./Homeland Security (AAS, CERT2)
- EMS Administration (AAS)
- Fire Science Technology (AAS)
- Graphic Design Specialist (AAS)
- Hazardous Materials Management (AAS, CERT2)
- Medical Administrative Technology (AAS)
- Medical Assistant (AAS)
- Medical Coding (CERT2)
- Medical Lab Technician (AAS)
- Medical Transcriptionist (CERT2)
- Military Technology (CERT2)
- Mobile Intensive Care Tech (AAS)
- Natural Gas Trans/Distribution Tech (AAS, CERT1, CERT2)
- Nursing - ADN (AAS)
- Nursing - PN (CERT2)
- Pharmacy Technician (CERT1)
- Technical Accounting Specialist (AAS)

Degree Codes
AS - Associate in Science
AA - Associate in Arts
AGS - Associate in General Studies
* - Emphasis of Study

Transfer Programs

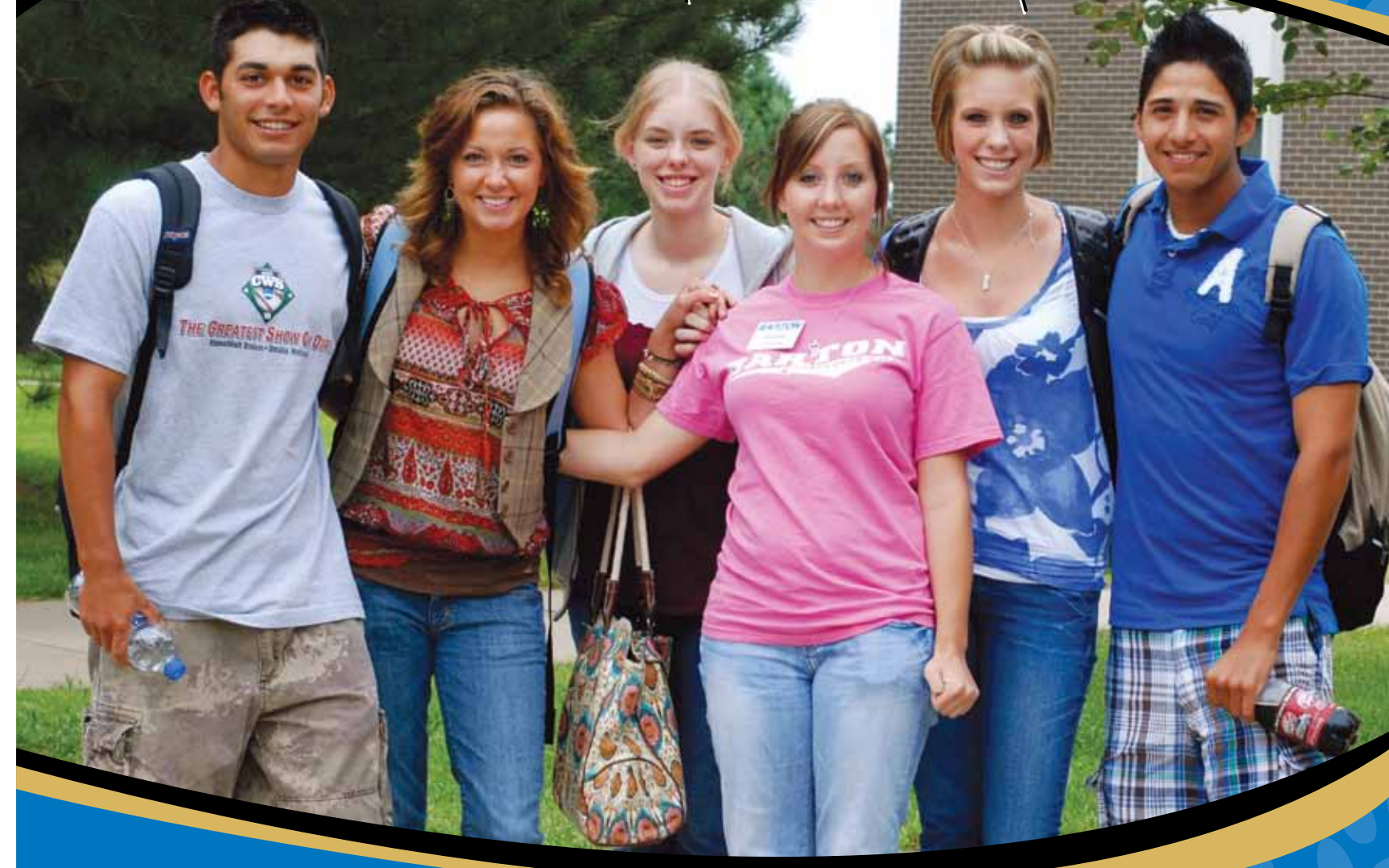
Transfer programs are designed for students who plan to transfer to a four-year college or university.

- Accounting (AA, AS)
- Agribusiness (AS)
- Agricultural Economics (AS)
- Agricultural Education (AS)
- Agriculture Communications (AS)
- Agriculture Transfer Option (AS)
- Agronomy (AS)
- Animal Science (AS)
- Anthropology Cultural Studies (AA, AS)
- Architectural Engineering (AA, AS)
- Architecture (AA, AS)
- Art (AA, AS)
- Art Education (AA, AS)
- Athletic Training (AA, AS)
- Auto Technology (AS)
- Biology (AA, AS)
- Chemistry (AA, AS)
- Chiropractic (AA, AS)
- Computer Forensics (AS)
- Computer Information Systems (AS)
- Computer Science (AA, AS)
- Crime Scene Investigation (AS)
- Criminal Justice (AS)
- Cytotechnology (AA, AS)
- Dance (AA, AS)
- Dental Hygiene (AA, AS)
- Dentistry (AA, AS)
- Dietetics (AS)
- Drama (AA, AS)
- Early Childhood Education (AA, AS)
- Economics (AA, AS)
- Elementary Education (AA, AS)
- Engineering (AA, AS)
- Engineering Tech (AA, AS)
- English (AA, AS)
- Environmental Compliance Concentration (AS)
- Exercise Science (AA, AS)
- Finance (AA, AS)
- Food Science (AS)
- Forensic Science (AA, AS)
- Forestry (AS)
- General Business (AA, AS)
- General Studies (AGS)
- Geology (AA, AS)
- Golf Course Management (AS)
- Graphic Design (AA, AS)
- Health Information Management (AA, AS)
- History (AA)
- Horticulture/Turf Management (AS)
- Journalism (AA, AS)
- Law (AA, AS)
- Law Enforcement - Transfer (AS)
- Liberal Studies (AA, AS)
- Management (AA, AS)
- Marketing (AA, AS)
- Math Education (AA, AS)
- Mathematics (AA, AS)
- Medical Lab Technician (AS)
- Medical Technology (AA, AS)
- Medicine (AA, AS)
- Milling Science (AS)
- Modern Languages (AA, AS)
- Mortuary Science (AA, AS)
- Music (AA, AS)
- Music Education (AA, AS)
- Nursing - ADN (AS)
- Nursing - Transfer (AA, AS)
- Occupational Therapy (AA, AS)
- Optometry (AA, AS)
- Park Management & Conservation (AS)
- Pharmacy (AA, AS)
- Philosophy (AA, AS)
- Photography (AA, AS)
- Physical Education (AA, AS)
- Physical Sciences (AA, AS)
- Physical Therapy (AA, AS)
- Physical Therapy Assistant (AA, AS)
- Physicians Assistant (AA, AS)
- Physics (AA, AS)
- Political Science (AA, AS)
- Pre-Nursing (AS)
- Psychology (AA, AS)
- Public Administration (AA, AS)
- Radiology Technology (AA, AS)
- Religion (AA, AS)
- Respiratory Therapy (AA, AS)
- Secondary Education (AA, AS)
- Social Sciences (AA, AS)
- Social Work (AA, AS)
- Sociology (AA, AS)
- Special Education (AA, AS)
- Speech Communications (AA, AS)
- Sports Administration (AA, AS)
- Veterinary Medicine (AS)
- Wildlife Science (AS)

BARTON
COMMUNITY COLLEGE
245 NE 30 RD • Great Bend, KS 67530-9251

BARTON

Collegians



Directory information

WEB ADDRESS
www.bartoncc.edu

GRANDVIEW PLAZA OUTREACH SITE
Local: (785) 238-8550
Toll-Free: 1-877-771-0255
Address: 100 Continental Avenue
Grandview Plaza, KS 66441

BARTRON COUNTY CAMPUS
Local: (620) 792-2701
Toll-Free: 1-800-748-7594
Address: 245 NE 30 RD
Great Bend, KS 67530

FORT RILEY CAMPUS
Local: (785) 784-6606
Toll-Free: 1-877-620-6606
Address: P.O. Box 2463, Building 217
Fort Riley, KS 66442
<http://fr.bartoncc.edu>

ONLINE LEARNING OPPORTUNITIES
www.bartononline.org
1-877-620-6606
www.edukan.org
1-877-433-8526

Cougar checklist

- Campus Tour** - A great way to see if Barton is the place for you!
- Admissions/Scholarship Application** - Remember Barton's academic scholarship deadline is March 15. Application available online.
- Submit ACT Scores or ASSET test scores** - Haven't taken either of these assessment tests? No problem just give us a call and we'll get you taken care of.
- Submit completed transcripts** - Completed transcripts must be mailed directly to Barton Admissions Office to be official. Unofficial transcripts can be used for advising and obtaining academic information (GPA, ACT Scores, etc).
- Housing Application** - Submit application and deposit early to get your first choice! Application available online.
- Financial Aid** - Never rule out the cost of going to college. Visit www.fafsa.ed.gov for federal assistance or call us with even more options!

Discovering new possibilities

Your personal tour guide will show you what Barton has to offer YOU! Your opportunities include:

- Meet with Admissions Staff
- Meet with an Academic Advisor
- Meet with a Financial Aid Advisor
- Meet with someone about any activity, sport, or organization in which you would like to take part
- Tour the Barton campus including student housing
- We'll even pay for you to eat lunch in our fabulous dining facility!

And if that's not enough, we'll even give you a **free gift just for coming to** check out what BARTON has to offer YOU!

Call the Admissions Office today to schedule your PERSONALIZED campus tour. Family and friends are always welcome to accompany you! Tours are scheduled Monday through Friday, 8 a.m. - 3 p.m. Tour times fill quickly so don't delay. Give us at least a week's notice and we'll get your visit scheduled to fit YOUR needs!

Call 800-722-6842 or 620-792-9286 to schedule a tour today!

Campus tours personalized for YOU!