



WHAT

drives
YOU?



BARTON

COMMUNITY COLLEGE

www.GoBarton.com



2011-12 Calendar Viewbook



Living the **DREAM**

Succeeding in class is important but so is succeeding in life. At Barton, the knowledge you learn in the classroom will help you apply it to what really matters...real life.

There are many benefits to choosing Barton. These usually differ according to one's needs, desires and what one wants from the Barton experience.

"My time at Barton was so much better than I thought it could be. Being involved in multiple activities and groups kept me busy, but I wouldn't have had it any other way. I met so many amazing people and have gained lifelong friends, and I wouldn't change that for the world."

— KAYLEE CARTER, Ottawa, Kansas



For some, it's knowing that the faculty and staff at Barton **TRULY CARE ABOUT YOU AS A PERSON** first and foremost.

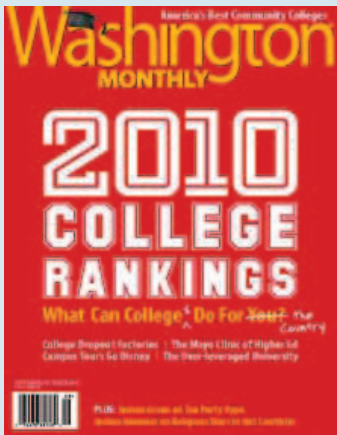


The convenience of Barton's class scheduling is a plus for others. Whether you want face-to-face **TRADITIONAL CLASSROOM SETTINGS, ONLINE CLASSES** that adapt to your busy schedule, or **HYBRID CLASSES** which blend classroom and online instruction, Barton has many options available to fit your needs and lifestyle.



If you desire a dynamic and fun college experience, Barton provides opportunities to get involved and perhaps even **"RE-INVENT ONESELF."** With over 30 clubs, organizations and performance groups, there is something for everyone to live the dream!

Barton also offers the opportunity to get job training quickly to help you either **ENTER THE WORKFORCE OR IMPROVE YOUR SKILLS** at your current workplace.



TOP 50 COMMUNITY COLLEGE IN AMERICA!

Barton Community College has been named one of America's 50 best community colleges by Washington Monthly magazine in its September '10 issue. Washington Monthly's top rankings are based upon what schools are doing for the country such as improving social mobility, producing research and promoting public service.

Bolstered by its high percentage of students who went on to complete four-year degrees, Barton's 70% graduation rate ranks fifth among the colleges that made the list.

INDEX

Living the Dream	April	Student Support	
October.....	Student Life	May.....	Activities & Organizations
November.....	Campus Visit	June	Fitness
December.....	Cougar Sports	July	Distance & Online Learning
January.....	Career Programs	August	Local Opportunities
February.....	Transfer Programs	About our Campuses & Campus Map	
March	On-campus Housing	Scratch Pad	
Financial Aid		Campus Directory	

IMAGINE the fun!

Student life at Barton includes the planning of many on and off campus activities. Activities are planned to create a safe and friendly environment for our tight-knit student body to interact, including involvement with our surrounding communities. At Barton, there is a place for **EVERYONE** to fit in.



Memories for the making!

Hawaiian Luau

\$3 Movie Nights

Free Shoulder Massages

Homecoming

Air Brush Tattoos

Late Night Breakfasts

Barton's Minute to Win It!

Bowling Nights

Mix and Mingle Bingo

Mardi Gras Celebration

For those who feel like having a relaxing evening at home, Barton's exclusive CATv (channel 52), offers a variety of both "classics" and recently released movies to be viewed on a daily basis.

You can enjoy 12 new movie releases per month without even leaving the comforts of your couch.




Your On Campus Movie Channel

OCTOBER

September
S M T W T F S
1 2 3
4 5 6 7 8 9 10
11 12 13 14 15 16 17
18 19 20 21 22 23 24
25 26 27 28 29 30

November
S M T W T F S
1 2 3 4 5
6 7 8 9 10 11 12
13 14 15 16 17 18 19
20 21 22 23 24 25 26
27 28 29 30

2011

Sunday	Monday	Tuesday	Wednesday	Thursday	Friday	Saturday
						
2	3	4	5	6	7	8
Men's Golf at Hesston, KS Women's Soccer vs Pratt 2 p.m. at Barton Men's Soccer vs Pratt 4 p.m. at Barton	Barton's Minute to Win It 6:30 p.m., Union Men's Golf at Hesston, KS	<i>Catch up on all the latest campus news and happenings at hilltopics.bartonccc.edu</i> Baseball vs Emporia State University 4 p.m. at ESU Women's Soccer vs Cowley 5 p.m. at Cowley Men's Soccer vs Cowley 7 p.m. at Cowley	\$3 Movie Night 6:30 p.m., Village Cinema Volleyball vs Dodge City 6:30 p.m. at Dodge City	Baseball vs Hutchinson 4 p.m. at Barton	Volleyball at Colorado Springs, CO	Softball vs Sterling Noon at Sterling Baseball vs Dodge City 1 p.m. at Dodge City Fall Play "Almost Maine" 7:30 p.m., Morrison Chapel
9	10	11	12	13	14	15
Women's BB Heartland Jamboree at Warrensburg, MO Women's Golf at Atwood Meet & Greet- Pie, 8 p.m., Commons	Columbus Day Women's Golf at Atwood Men's Golf at Hutchinson Free Bingo 6 p.m., Union Sneak Preview Concert 7:30 p.m., Fine Arts Auditorium	Financial Aid Payout Men's Golf at Hutchinson Women's Soccer vs Northern Oklahoma 2 p.m. at Barton Men's Soccer vs Northern Oklahoma 4 p.m. at Barton	Women's Soccer vs Allen 2 p.m. at Barton Men's Soccer vs Allen County 4 p.m. at Barton Volleyball vs Hutchinson 6:30 p.m. at Barton	Free Bowling 7:30-10 p.m., Eagle Lanes - Ellinwood	Volleyball at West Plains, MO Women's Soccer vs Butler 4 p.m. at Barton Baseball Alumni Weekend	Volleyball at West Plains, MO Men's BB at Coffeyville Jamboree Cross Country at McPherson, 10:15 a.m. Men's Soccer at Kansas City Kansas 1 p.m. Baseball Alumni Weekend
16	17	18	19	20	21	22
National Boss' Day Start Decorating Dorm Doors for Halloween, Student Housing Baseball Alumni Weekend	Barton's Minute to Win It 6:30 p.m., Union	\$3 Movie Night, Village Cinema Volleyball vs Pratt 6:30 p.m. at Pratt	Women's Soccer vs Garden City 5 p.m. at Garden City	All Faculty Meeting Volleyball vs Colby 6:30 p.m. at Colby Fall Break (No Classes/Offices Open)	Cross Country at Butler Fall Break (No Classes/Offices Open)	Women's BB at Kansas Wesleyan University
23/30	24/31	25	26	27	28	29
Men's BB Scrimmage at Johnson County CKPTL Girls Recital 2:30 p.m., Shafer Art Gallery Women's Soccer Region Finals Men's Soccer Region Finals Music Recital, 2 p.m., Morrison Chapel	Women's Golf at Goodland Women's Soccer Region VI 1 st Round Volleyball vs Cloud, 6 p.m. at Barton Halloween Halloween Costume Dance, 9 p.m. - midnight, Union	Financial Aid Payout Men's Soccer Region Quarter-Finals Women's Golf at Goodland	Volleyball vs Seward 6:30 p.m. at Barton	Judging Halloween Dorm Doors, Student Housing Women's BB vs FHSU 6 p.m. at FHSU	Women's Soccer Region Semi-Finals	Women's Soccer Region Semi-Finals Men's Soccer Region Semi-Finals

DISCOVERING new possibilities!



Why do YOU need to come on a tour at Barton?

You need to come and enjoy the personalized tour of Barton to guarantee that we are the perfect match for you! We want you to come visit with our Faculty and Staff, tour the Campus and Housing, eat a FREE lunch in our fabulous dining facility, and have a GREAT time! We welcome family and friends to come on the tour as well.

What Major are you interested in?

You will meet with an Academic Advisor to discuss all of the opportunities and possibilities for your future program of study and classes you will be taking.

How much will college cost?

We would be more than happy to go over any Financial Aid questions while you are here. Also, if you are looking for scholarship possibilities, we would be happy to arrange a visit with any sport, activity, or organization you might be interested in to see if scholarships are available for you!

How do I become a Barton Cougar?

A member of the Admissions Staff will visit with you regarding any questions you may have to help get you started on the path to becoming a Cougar.

Tours are scheduled Monday - Friday, 8:30 a.m. - 3 p.m. Tour times fill quickly, so don't delay! Give us at least a week's notice, and we'll get your visit scheduled to fit YOUR needs! Call 800-722-6842 to schedule a tour today!



It was very nice working with Sherri. She helped me with everything I needed to get started and picking out classes.

— DARIAN BOYD, Moore, Oklahoma



"We'd Love to Meet You!" photo shoot



Is my bow on straight?



WE'D LOVE TO MEET YOU!

STRIVING for excellence



MEN'S SPORTS

- Baseball
- Basketball
- Cross Country
- Golf
- Soccer
- Tennis
- Track



WOMEN'S SPORTS

- Basketball
- Cross Country
- Golf
- Soccer
- Softball
- Tennis
- Track
- Volleyball



In **41** years of athletic competition,
 Barton has **55** national titles,
144 region or district championships,
157 conference championships,
 over **50** professional athletes,
22 Olympians, and
10 Olympic Medal winners.



DECEMBER



November

S	M	T	W	T	F	S
	1	2	3	4	5	
6	7	8	9	10	11	12
13	14	15	16	17	18	19
20	21	22	23	24	25	26
27	28	29	30			

January

S	M	T	W	T	F	S
1	2	3	4	5	6	7
8	9	10	11	12	13	14
15	16	17	18	19	20	21
22	23	24	25	26	27	28
29	30	31				

2011

Sunday	Monday	Tuesday	Wednesday	Thursday	Friday	Saturday
				1	2	3
<i>Hilltopics</i>	<i>Catch up on all the latest campus news and happenings at hilltopics.bartonccc.edu</i>			Music Recital 7:30 p.m., Morrison Chapel	Barton Classic: Women's BB vs Fort Scott 5 p.m. at Barton Men's BB vs Fort Scott 7 p.m. at Barton	Barton Classic: Women's BB vs Independence 5 p.m. at Barton Men's BB vs Brown Mackie 7 p.m. at Barton Jingle Bell Swing 8 p.m., Legion
4	5	6	7	8	9	10
Meet and Greet: Holiday Cookies 8 p.m., Commons	Barton's Minute to Win It 6:30 p.m., Union Holiday Concert 7:30 p.m., Fine Arts Auditorium	Financial Aid Payout Late Night Breakfast 10-11 p.m., Union	Final Examination Day	Final Examination Day	Final Examination Day Close of Fall 2011 Semester Spring 2012 Priority Registration Ends Airport/Bus Station Transportation to Wichita leaves campus at noon	
11	12	13	14	15	16	17
	Spring 2012 Regular Registration Begins Summer 2012 Priority Registration Begins No Classes/Offices Open	Financial Aid Payout No Classes/Offices Open	No Classes/Offices Open	No Classes/Offices Open	No Classes/Offices Open	Campus Closed
18	19	20	21	22	23	24
Campus Closed	Campus Closed	Campus Closed	Campus Closed	Campus Closed Winter Begins	Campus Closed	Campus Closed Christmas Eve
25	26	27	28	29	30	31
Campus Closed Christmas Day	Campus Closed	Campus Closed	Campus Closed	Campus Closed	Women's BB at Allen (Scrimmage) Campus Closed	Campus Closed New Year's Eve

Put your **PASSION** to work!

Career Technical Education Programs

Career technical education programs offer you an opportunity to pursue certificate and degree programs designed to prepare you for employment in the workplace and/or transfer to a university.

DEGREE CODES

- AAS - Associate in Applied Science
- C- Certificate
- NDS - Non-degree seeking
- SAP - Stand alone program
- * - Emphasis of Study



Adult Health Care

- Certified Medication Aide (SAPP)
- Certified Nurse Aide (SAPP)
- Home Health Aide (SAPP)

Agriculture Business Management (AAS)

- Crop or Livestock Production*

Automotive Technology (AAS, C)

Business Administrative Technology (AAS)

- Administrative Assistant*

Business Management and Leadership (AAS)

Business Technology (AAS)

Computer Networking Specialist (AAS, C)

Corrections (AAS)

Criminal Justice (AAS)

Crop Protection (AAS, C)

Dietary Manager (C)

Early Childhood (AAS)

Emergency Management/Homeland Security (AAS, C)

Emergency Services Education

- Emergency Medical Services Administration (AAS)
- Emergency Medical Technician - Basic (SAPP)
- Emergency Medical Technician - Intermediate (SAPP)
- Emergency Medical Responder (SAPP)

Fire Science Technology (AAS)

- Contact the EMS Office at (620) 792-9341 for details

Hazardous Materials Management (AAS, C)

Manufacturing Skills Certificate (SAPP)

Medical Administrative Technology (AAS)

- Medical Assistant (AAS)
- Medical Coding (C)
- Medical Laboratory Technician (AAS)
- Medical Transcriptionist (C)
- Military Technology (C)
- Natural Gas Transmission & Distribution Technician (AAS, C)

Nursing

- IV Therapy (SAPP)
- Nursing - PN (C)
- Associate Degree Nursing - ADN (AAS)
- Students passing the state exams become a Licensed Practical Nurse or a Registered Nurse

Paramedic (AAS)

- Pension Administration* (SAPP)
- Phlebotomy Training (SAPP)
- Tech Accounting Specialist (AAS)



JANUARY

December

S	M	T	W	T	F	S
				1	2	3
4	5	6	7	8	9	10
11	12	13	14	15	16	17
18	19	20	21	22	23	24
25	26	27	28	29	30	31

February

S	M	T	W	T	F	S
				1	2	3
4	5	6	7	8	9	10
11	12	13	14	15	16	17
18	19	20	21	22	23	24
25	26	27	28	29		

2012

Sunday	Monday	Tuesday	Wednesday	Thursday	Friday	Saturday
1 Campus Closed New Year's Day	2 No Classes/Offices Open	3 No Classes/Offices Open	4 No Classes/ Offices Open Women's BB vs Seward 6 p.m. at Barton Men's Basketball vs Seward 8 p.m. at Barton	5 No Classes/ Offices Open	6 No Classes/ Offices Open Professional Conference Day Spring 2012 Regular Registration Ends Airport/Bus Station Pickup Arrive by 4:30 p.m.	7 Women's BB vs Dodge City 5:30 p.m. at Dodge City Men's BB vs Dodge City 7:30 p.m. at Dodge City
8 Meet and Greet 8 p.m., Commons	9 Spring 2012 Classes Begin Spring 2012 Late Registration Begins	10 \$3 Movie Night, Village Cinema	11 Women's BB vs Garden City 6 p.m. at Barton Men's BB vs Garden City 8 p.m. at Barton	12	13 Spring 2012 Registration Ends	14 Women's BB vs Butler 5:30 p.m. at Butler Men's BB vs Butler 7:30 p.m. at Butler
15	16 Martin Luther King Jr. Day No Classes/Offices Closed	17	18 Women's BB vs Hutchinson 6 p.m. at Barton Men's BB vs Hutchinson 8 p.m. at Barton	19 Free Bowling 7:30-10 p.m., Eagle Lanes – Ellinwood	20 Last Day for Refund	21
22	23 Barton's Minute to Win It 6 p.m., Union	24	25 Women's BB vs Colby 6 p.m. at Colby Men's BB vs Colby 8 p.m. at Colby	26 Free Bingo 6 p.m., Union	27	28 Women's BB vs Pratt 6 p.m. at Barton Men's BB vs Pratt 8 p.m. at Barton
29	30	31				<i>Catch up on all the latest campus news and happenings at hilltopics.bartonccc.edu</i>

Getting you to the **NEXT LEVEL**

Transfer Programs

Transfer programs are designed to prepare you for transferring from Barton to a four-year college or university.

DEGREE CODES

AS - Associate in Science

AA - Associate in Arts

AGS - Associate in General Studies

* - Emphasis of Study

- Accounting (AS)
- Agribusiness (AS)
- Agricultural Economics (AS)
- Agricultural Education (AS)
- Agriculture Communications (AS)
- Agriculture Transfer Option (AS)
- Agronomy (AS)
- Animal Science (AS)
- Anthropology Cultural Studies (AA, AS)
- Architectural Engineering (AA, AS)
- Architecture (AA, AS)
- Art (AA, AS)
- Art Education (AA, AS)
- Athletic Training (AA, AS)
- Auto Technology (AS)
- Biology (AA, AS)

- Business (AS)
- Chemistry (AA, AS)
- Chiropractic (AA, AS)
- Computer Information Systems (AS)
- Computer Science (AS)
- Criminal Justice (AS)
- Dance (AA, AS)
- Dental Hygiene (AA, AS)
- Dentistry (AA, AS)
- Dietary Management (AS)
- Dietetics (AS)
- Drama (AA, AS)
- Early Childhood Education (AA, AS)
- Economics (AS)
- Elementary Education (AA, AS)
- Engineering (AA, AS)
- Engineering Tech (AA, AS)
- English (AA, AS)
- Environmental Compliance Concentration (AS)
- Exercise Science (AA, AS)
- Finance (AS)
- Food Science (AS)
- Forensic Science (AA, AS)
- Forestry (AS)
- General Studies (AGS)
- Geology (AA, AS)
- Golf Course Management (AS)
- Graphic Design (AA)
- Health Information Management (AA, AS)
- History (AA)
- Horticulture/Turf Management (AS)
- Journalism (AA, AS)
- Law (AA, AS)
- Law Enforcement - Transfer (AS)
- Liberal Studies (AA, AS)
- Management (AS)

- Marketing (AS)
- Math Education (AA, AS)
- Mathematics (AA, AS)
- Medical Lab Technician (AS)
- Medicine (AA, AS)
- Military Studies (AGS)
- Milling Science (AS)
- Modern Languages (AA, AS)
- Mortuary Science (AA, AS)
- Music (AA, AS)
- Music Education (AA, AS)
- Nursing - Transfer (AA, AS)
- Occupational Therapy (AA, AS)
- Optometry (AA, AS)
- Park Management & Conservation (AS)
- Pharmacy (AA, AS)
- Philosophy (AA, AS)
- Photography (AA, AS)
- Physical Education (AA, AS)
- Physical Sciences (AA, AS)
- Physical Therapy (AA, AS)
- Physical Therapy Assistant (AA, AS)
- Physicians Assistant (AA, AS)
- Physics (AA, AS)
- Political Science (AA, AS)
- Pre-Nursing (AS)
- Psychology (AA, AS)
- Public Administration (AA, AS)
- Radiology Technology (AA, AS)
- Religion (AA, AS)
- Respiratory Therapy (AA, AS)

- Secondary Education (AA, AS)
- Social Work (AA, AS)
- Sociology (AA, AS)
- Special Education (AA, AS)
- Speech Communications (AA, AS)
- Sports Administration (AA, AS)
- Veterinary Medicine (AS)
- Wildlife Science (AS)



No more jumping off of the bunk beds!



FEBRUARY

January

S	M	T	W	T	F	S
1	2	3	4	5	6	7
8	9	10	11	12	13	14
15	16	17	18	19	20	21
22	23	24	25	26	27	28
29	30	31				

March

S	M	T	W	T	F	S
				1	2	3
4	5	6	7	8	9	10
11	12	13	14	15	16	17
18	19	20	21	22	23	24
25	26	27	28	29	30	31

2012

Sunday	Monday	Tuesday	Wednesday	Thursday	Friday	Saturday
 5 Super Bowl Party, Commons/ Cottonwood Baseball at Odessa, TX	 6 Barton's Minute to Win It 6 p.m., Union	 7	1 Priority Deadline to Apply for Spring 2012 Graduation Women's BB vs Cloud 5:30 p.m. at Cloud Men's BB vs Cloud 7:30 p.m. at Cloud	2 Groundhog Day \$3 Movie Night, Village Cinema	3 Baseball at Odessa, TX	4 Women's BB vs Seward 6 p.m. at Seward Men's BB vs Seward 8 p.m. at Seward Baseball at Odessa, TX
12 Meet and Greet 8:00 p.m., Commons	13 \$3 Movie Night, Village Cinema	14 Valentine's Day Valentine's Day Cookies 2-4 p.m., Union Softball vs Cloud 2 p.m. at Barton	8 Free Massages 6-9 p.m., Union Women's BB vs Dodge City 6 p.m. at Barton Men's BB vs Dodge City 6 p.m. at Barton	9	10 Music Scholarship Days	11 Women's BB vs Garden City 5:30 p.m. at Garden City Men's BB vs Garden City 7:30 p.m. at Garden City
19 Baseball vs McCook 1 p.m. at Barton Softball at Carl Alberts Tournament	20 Washington's Birthday (Observed) Homecoming Elections 8 a.m.-1 p.m., Union Barton's Minute to Win It 6 p.m., Union	21 Mardi Gras 11 a.m.-1:15 p.m., Union Baseball vs Bethany JV 1 p.m. at Barton	15 Women's BB vs Butler 6 p.m. at Barton Men's BB vs Butler 8 p.m. at Barton	16 Softball vs Pratt 2 p.m. at Pratt Free Bowling 7:30-10 p.m., Eagle Lanes – Ellinwood	17	18 Baseball vs McCook 2 p.m. at Barton Women's BB vs Hutchinson, 5:30 p.m. at Hutchinson Men's BB vs Hutchinson 7:30 p.m. at Hutchinson Softball at Carl Alberts Tournament
26 Baseball vs Western Nebraska 1 p.m. at Barton	27 Free Bingo 6 p.m., Union	28 Financial Aid Payout	22 Ash Wednesday Homecoming Finalist Election 8 a.m.-1 p.m., Union Softball vs Dodge City 2 p.m. at Barton	23	24 Baseball vs Western Nebraska 1 p.m. at Barton Softball at Cowtown Classic	25 Baseball vs Western Nebraska 1 p.m. at Barton Women's BB vs Colby, 6 p.m. at Barton Men's BB vs Colby, 8 p.m. at Barton Homecoming (crowning between games) Softball at Cowtown Classic
			29 \$3 Movie Night, Village Cinema Women's BB vs Pratt 6 p.m. at Pratt Men's BB vs Pratt 8 p.m. at Pratt		<i>Catch up on all the latest campus news and happenings at hilltopics.bartonccc.edu</i>	

IMAGINE the fun!

Nothing spells fun more than living in a community of 292 of your fellow classmates from all around the world. You will have the opportunity to meet new people, begin life-long friendships, and develop life skills.

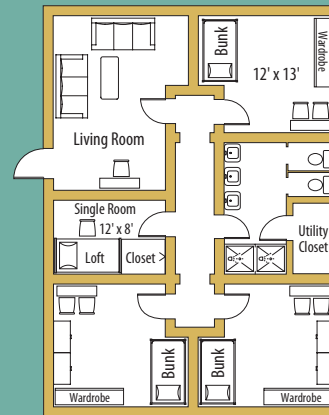
Barton considers Student Housing an important part of your total education. Comfortable living conditions have a major influence on your academics, habits, attitudes and ideals. Your social life, loyalty to the college, attitude toward others, and your sense of belonging evolve from the community you'll join in Student Housing.



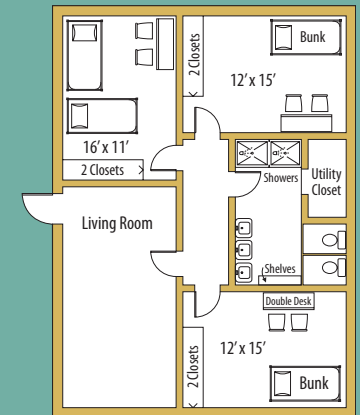
Naptime is over, Bart! Silly Kitty!

FEATURES

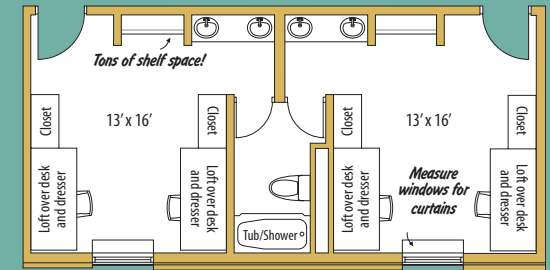
- Wireless Internet campus-wide including student housing
- Two FREE Laundromats
- Meal plan includes 19 meals per week
- Housing for 292 students including 12 single rooms
- Phone service
- FREE cable available in each room including free movie channels
- Plenty of spaces in student housing parking lots and no additional fee for a parking permit
- Tennis courts
- Vending machines for snacks, beverages and laundry supplies
- A study desk and wardrobe area as well as extra long twin beds, bunked or lofted, in each room
- Community meeting room with big-screen color television and a Wii game console
- Special accommodations for students with disabilities
- Do-it-yourself kitchen areas available with stove, microwave, refrigerator and ice machine
- Housing complex area storm shelter
- 24-hour security and camera surveillance
- Two Eco-friendly drinking water stations
- Sand volleyball pit



Bluestem Halls:
There will be some variation between units "Community Style" (6-7 people per unit)

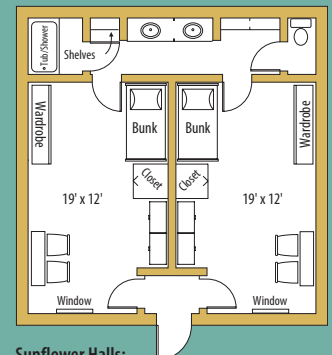


Meadowlark Halls:
There will be some variation between units "Community Style" (6-7 people per unit)



Cottonwood Hall: Handicap accessible rooms available "Traditional Style" (2 people per room)

All four unique layout designs offer the benefit of relaxed living while maintaining your privacy.



Sunflower Halls:
Two rooms, double occupancy "Apartment Style" (2 people per room)



MARCH



February

S	M	T	W	T	F	S
			1	2	3	4
5	6	7	8	9	10	11
12	13	14	15	16	17	18
19	20	21	22	23	24	25
26	27	28	29			

April

S	M	T	W	T	F	S
1	2	3	4	5	6	7
8	9	10	11	12	13	14
15	16	17	18	19	20	21
22	23	24	25	26	27	28
29	30					

2012

Sunday	Monday	Tuesday	Wednesday	Thursday	Friday	Saturday
				1	2	3
<i>Hilltopics</i>	<i>Catch up on all the latest campus news and happenings at hilltopics.bartonccc.edu</i>			Softball vs Hutchinson 2 & 4 p.m. at Hutchinson		Parnassus Auditions 9-noon, Morrison Chapel & F164 Baseball vs Hutch, 1 p.m. at Hutch Women's BB vs Cloud, 6 p.m. at Cloud Men's BB vs Cloud, 8 p.m. at Cloud Softball at Cloud Tournament
4	5	6	7	8	9	10
Baseball vs Hutchinson 1 p.m. at Hutchinson Softball at Cloud Tournament	Barton's Minute to Win It 6 p.m., Union		Women's BB Region VI Playoffs Men's BB Region VI Playoffs Softball vs Dodge City 2 p.m. at Dodge City	Softball vs Cloud 2 p.m. at Cloud Free Bowling 7:30-10 p.m., Eagle Lanes - Ellinwood	Musical 7:30 p.m., Fine Arts Auditorium Women's BB Region VI Playoffs Men's BB Region VI Playoffs	Vocal Master Class 9 a.m.-3:30 p.m., Morrison Chapel Baseball vs Pratt 1 p.m. at Barton Softball at Mid-West Juco Classic Musical, 7:30 p.m., Fine Arts Auditorium
11	12	13	14	15	16	17
Daylight Savings Time Begins Baseball vs Pratt, 1 p.m. at Barton Softball at Mid-West Juco Classic Musical, 2 p.m., Fine Arts Auditorium Women's BB Region VI Playoffs Men's BB Region VI Playoffs Meet and Greet, 8 p.m., Commons	Women's BB Region VI Playoffs Men's BB Region VI Playoffs	Financial Aid Payout \$3 Movie Night, Village Cinema	Softball vs Colby 3 p.m. at Barton Baseball vs Bethany JV 5 p.m. at Barton Free Bingo 6 p.m., Union	Instrumental concert 7:30 p.m., Fine Arts Auditorium		St. Patrick's Day Baseball vs Seward 1 p.m. at Seward
18	19	20	21	22	23	24
Baseball vs Seward 1 p.m. at Seward	Spring Break (No Classes/Offices Open)	Spring Break (No Classes/Offices Open) Spring Begins Baseball vs Brown Mackie 2 p.m. at Brown Mackie	Spring Break (No Classes/ Offices Open) Softball vs Garden City at Barton	Spring Break (No Classes/Offices Closed)	Spring Break (No Classes/Offices Closed)	Baseball vs Colby 1 p.m. at Barton
25	26	27	28	29	30	31
Baseball vs Colby 1 p.m. at Barton Men's Golf at Emporia	Barton's Minute to Win It 6 p.m., Union Men's Golf at Emporia	Financial Aid Payout	\$3 Movie Night, Village Cinema Softball vs Butler at Butler			Baseball vs Cloud 1 p.m. at Cloud

Make your **DREAMS** happen!

Barton is driven to help make college affordable for everyone. With **LOW TUITION RATES** and various ways to help students, Barton wants to help ensure your focus is on your future.

With **OVER \$9.8 MILLION PAID LAST YEAR**, opportunities exist to help ease your financial burden. Barton offers awards based on your academic achievement, involvement in student activities and organizations, as well as, offering student employment opportunities.

Students interested in applying for academic scholarships, activity scholarships, departmental scholarships, and federal financial aid are encouraged to apply early. Barton's academic scholarship deadline is March 15 so don't delay... apply today!

For more information about financial opportunities at Barton, see our Financial Aid brochure or contact the Financial Aid Office at (620) 792-9270.

CAMPUS EMPLOYMENT

Campus employment provides employment opportunities that enable you to **EARN MONEY** to fund your education. Campus-based, Federal Work Study awards are based on documented need and availability of funds. To the extent possible, Barton will attempt to provide employment that complements and reinforces your educational and vocational career goals. For additional information, contact the Career Center at (620) 792-9349.

ACADEMIC SCHOLARSHIPS

You must be a Kansas High School graduate (or a Kansas Resident with a GED) to be eligible for the Academic Scholarship. The award is based upon the higher of your high school GPA or ACT score. To **BE AWARDED** a scholarship, you must complete and submit a Barton Admissions &



FINANCIAL Opportunities

In addition to Barton, check with your local high school counselor, chamber of commerce, churches, and civic organizations for additional scholarship opportunities.

Barton's Academic Scholarships will be available for six full-time semesters. They will annually renew with your most current Barton GPA.

Payment options available.

Over \$1 million dollars awarded in scholarships.

Everyone should take the time to fill out the Free Application for Federal Student Aid. You may find out you qualify for federal grants, loans, and/or student employment. Simply go to www.fafsa.gov. Barton's FAFSA code is: 004608

2011-2012 Cost Information



PLANNING TIP

Cost should not be a reason to rule out college!

- Fill out the free application for Federal Student Aid at www.fafsa.ed.gov (Barton's Code: 004608)
- Payment options also available



The scholarship deadline is **March 15, 2012** for the 2012-13 aid year.

Legal Residence in Kansas

Tuition	\$57/credit hour
Fees	\$30/credit hour

Legal Residence Outside of Kansas

Tuition	\$88/credit hour
Fees	\$30/credit hour

Annual Cost Estimates (Kansas resident)

Tuition & Fees	\$2,784	*based on 16 credit hours per semester
Books & Supplies	\$ 830	(estimated)
Residence Halls	\$4,784	(19 meals per week)
Total	\$8,398	

The Barton Board of Trustees has the right to change tuition and fees without notice. *A scholarship of \$3 per credit hour applies to Barton County residents.

Scholarship Application by March 15 for the 2012-13 aid year.

The scholarship will be available for six full-time semesters and will renew annually with your most current Barton GPA.

Jayhawk Conference rules state that if you are receiving an athletic books and tuition scholarship, you must meet a 3.5 GPA criteria upon high school graduation to accept a Barton Academic Scholarship in addition to the Barton Athletic Scholarship.

Barton's Academic Scholarships

*Additional Activity and Performance scholarships are available!
Automatic award if admissions application is received by March 15, 2012.

Award	Award Amount	Kansas HS GPA	GED Score	ACT Score
Excellence Award	\$1,000	3.5 and above	3500+	26+
Honor Award	\$800	3.0 - 3.49	3250 - 3490	24 - 25
Achievement Award	\$500	2.5 - 2.99	3000 - 3240	22 - 23
Merit Award	\$250	2.0 - 2.49	2750 - 2990	20 - 21

ACTIVITY AND DEPARTMENTAL SCHOLARSHIPS

Activity and Departmental Scholarships are offered by instructors or staff from various Barton programs. Selections are based on **SPECIAL SKILLS AND/OR PERFORMING ABILITIES** with the student expected to complete specified obligations. The sponsor administering the award determines contract obligations and award amounts. Areas offering Activity and Departmental awards include: Band, Vocal, Agriculture, Drama, Journalism, Forensics, Honors, Student Government, Admissions, Athletic Student Trainers, Dance Line, and Cheerleading.



There are many possibilities to find campus jobs doing office work, working in the bookstore or art gallery, life guarding, maintenance work, computer lab monitoring, and many more!



School expenses + [^]cattin' \$ = on-campus job for Bart!



We provide the support to assist you
Set goals and evaluate regularly © Know where to find help

but SUCCESS begins with you!
Know what it takes to be successful © Know yourself

SUPPORTING you when you need it

Academic Advising

A student-centered, advisor-driven system designed to increase student success and retention by promoting close and continuous contact between students, advisors and the Barton student support structure.

Campus Security

Text messaging, surveillance cameras and 24 hour security officers help support a safe campus life experience.

TRiO Programs

Provides free services for eligible students to assist in meeting educational and personal goals.

- Student Support Services
- Educational Opportunity Center
- Upward Bound Programs

Tutoring

FREE peer and professional tutoring during regular Learning Resource Center hours.

Counseling Services

Professional and personal counseling is available to assist students with personal or academic challenges.

Health Services

Free basic services are provided by a full-time registered nurse Monday through Friday with after-hours emergency service available.

WE CAN'T WAIT TO DISCOVER
WHAT YOU WILL CREATE AT BARTON!

Barton offers a wide variety of Student Services dedicated to assisting you in achieving greatness. Our services are designed to directly enhance student learning and support students' social and personal growth. We are continually inspired by the energy, the diversity, and the possibility our students bring to Barton.



Austin was a really good teacher. He makes all of the topics he teaches interesting. He takes time to explain information and cares about the students.

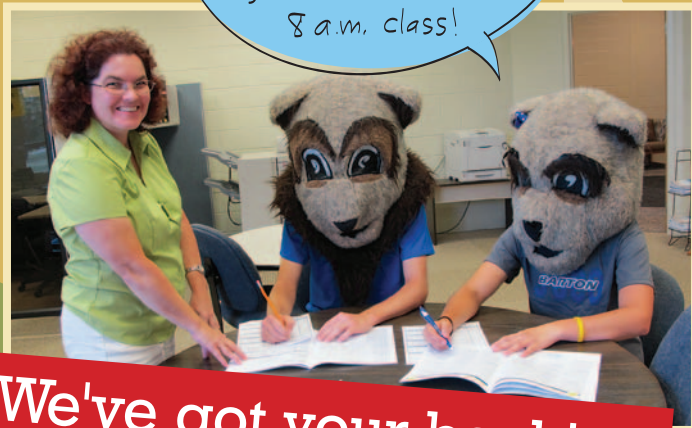
— JORDAN GALLACHER
Murray, Utah



FINDING WHAT DRIVES YOU

Barton's Career Center provides resources to help you find part-time jobs, internships, and prepare you for life beyond college. More importantly, we want to help you DISCOVER YOUR POTENTIAL.

Karen! No, no, no...
I can't possibly get myself ready for an 8 a.m. class!



We've got your back!

APRIL

March

S	M	T	W	T	F	S
			1	2	3	
4	5	6	7	8	9	10
11	12	13	14	15	16	17
18	19	20	21	22	23	24
25	26	27	28	29	30	31

May

S	M	T	W	T	F	S	
			1	2	3	4	5
6	7	8	9	10	11	12	
13	14	15	16	17	18	19	
20	21	22	23	24	25	26	
27	28	29	30	31			

2012

Sunday	Monday	Tuesday	Wednesday	Thursday	Friday	Saturday
1 Palm Sunday Women's Golf at Salina Baseball vs Cloud 1 p.m. at Cloud	2 Women's Golf at Salina	3 Easter Egg Drop Baseball vs FHSU JV 4 p.m. at FHSU Student Recital 7:30 p.m., Morrison Chapel	4 Last Day to Drop with Courses Recorded as "W" on Transcript Free Bingo 6 p.m., Union Softball vs Pratt 3 p.m. at Barton	5	6 Good Friday (No Classes/Offices Closed) Baseball vs Butler 1 p.m. at Barton	7 Baseball vs Butler 1 p.m. at Barton
8 Easter	9 Easter Monday (No Classes/Offices Closed) Women's Golf at Great Bend	10 Women's Golf at Great Bend	11 Financial Aid Payout Softball vs Garden City at Garden City \$3 Movie Night, Village Cinema	12	13	14 Baseball vs Longview 2 p.m. at Kansas City, KS Softball at Colby Tournament
15 Men's Golf at Salina Baseball vs Longview 1 p.m. at Kansas City, KS Softball at Colby Tournament Meet and Greet 8 p.m., Commons	16 Fall 2012 Priority Registration Begins Federal Income Taxes Due Men's Golf at Salina Barton's Minute to Win It 6 p.m., Union	17 Advisement Day (No Day Classes) Softball vs Colby 3 p.m. at Colby Baseball vs Brown Mackie 4 p.m. at Barton	18	19 Free Bowling 7:30-10 p.m. Eagle Lanes – Ellinwood	20	21 Baseball vs Dodge City 1 p.m. at Dodge City Softball vs Seward 3 p.m. at Barton
22 Earth Day Baseball vs Dodge City 1 p.m. at Dodge City Men's Golf at Newton	23 Softball vs Hutchinson at Barton Men's Golf at Newton Free Massages 6-9 p.m., Union	24 Men's Golf at Newton	25 Administrative Professional's Day Barton's Annual Hawaiian Night, Union Baseball vs Hesston 6:30 p.m. at Hesston Softball vs Butler at Barton	26 \$3 Movie Night, Village Cinema Music Recital 7:30 p.m., Morrison Chapel Spring Play, "The Last 5 Years" 7:30 p.m., Fine Arts Auditorium	27 Spring Play, "The Last 5 Years" 7:30 p.m., Fine Arts Auditorium	28 Baseball vs Garden City 1 p.m. at Barton Spring Play, "The Last 5 Years" 7:30 p.m., Fine Arts Auditorium
29 Women's Golf at Hutchinson Baseball vs Garden City 1 p.m. at Barton Men's Golf District Championship at Newton	30 Women's Golf at Hutchinson Men's Golf District Championship at Newton Barton's Minute to Win It 6:00 p.m., Union	Hilltopics	<i>Catch up on all the latest campus news and happenings at hilltopics.bartonccc.edu</i>			

College is what **YOU** make of it

Student Activities & Organizations

Campus Christian Fellowship
 Cheer Squad
 Collegiate Farm Bureau
 Collegiate Music Educators National Conference
 Community Student Organization
 Computer Club
 Concert Band
 Concert Choir
 Cougar Dance Team
 Da Capo

Debate
 Dolce
 Forensics
 Hispanic American Leadership Organization (HALO)
 Honors Program
 International and Multicultural Society
 Jazz Band
 Journalism Crew
 Lambda Alpha Epsilon

National Honor Societies
 Nursing Club
 Orchestra
 Pep Band
 St. Justa Pottery Guild
 Student Ambassadors
 Student Government Association
 The Hilltop Singers
 The Interrobang



MAY



April

S	M	T	W	T	F	S
1	2	3	4	5	6	7
8	9	10	11	12	13	14
15	16	17	18	19	20	21
22	23	24	25	26	27	28
29	30					

June

S	M	T	W	T	F	S
						1 2
3	4	5	6	7	8	9
10	11	12	13	14	15	16
17	18	19	20	21	22	23
24	25	26	27	28	29	30

2012

Sunday	Monday	Tuesday	Wednesday	Thursday	Friday	Saturday
		1	2	3	4	5
		Men's Golf District Championship at Newton	\$3 Movie Night, Village Cinema	Free Bowling 7:30-10 p.m., Eagle Lanes - Ellinwood Endowment Concert 7:30 p.m., Fine Arts Auditorium		Baseball Regionals
6	7	8	9	10	11	12
Baseball Regionals Meet and Greet 8 p.m., Commons	Final Examinations Baseball Regionals Late Night Breakfast 10-11 p.m., Union	Financial Aid Payout Final Examinations	Close of Spring 2012 Semester Final Examinations	Commencement 7 p.m., Kirkman Gym	Summer 2012 Priority Registration Ends Airport/Bus Station to Wichita Transportation leaves Campus at 10 a.m.	Baseball Regionals
13	14	15	16	17	18	19
Mother's Day Baseball Regionals	Summer Hours Begin Offices open 7 a.m.-5 p.m. Monday-Thursday Baseball Regionals	Financial Aid Payout	Summer 2012 Regular Registration Begins		Summer 2012 Regular Registration Ends Campus Closed, Summer Hours	Armed Forces Day
20	21	22	23	24	25	26
	Summer 2012 Classes Begin		Last Day for Late Registration for 1 st 4-Week & 8-Week Sessions	Last Day for Refund for 1 st 4-Week and 8-Week Sessions	Campus Closed, Summer Hours	
27	28	29	30	31		
	Memorial Day (No Classes/Offices Closed)					

Hilltopics

Catch up on all the latest campus news and happenings at hilltopics.bartonccc.edu

Free access to facilities for all Barton students!

YEAR-ROUND Fitness

Kirkman Student Activity Center

The Kirkman Activity Center is a 45,250 square foot multi-level building giving our students the combination of a free access, year-round fitness facility and student services.



Join the fun!

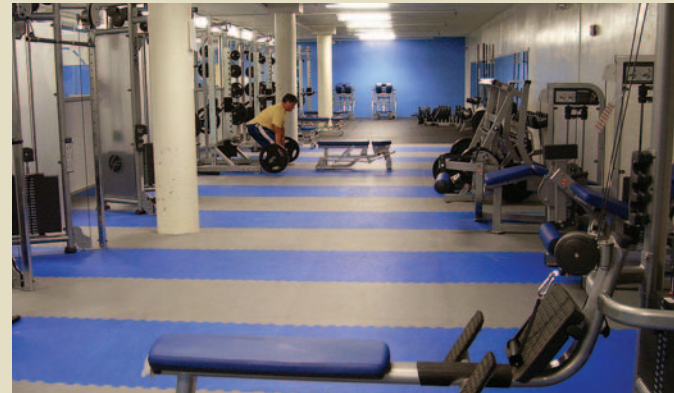


The upper level

is home to the Thelma Faye Harms state-of-the-art Wellness Center, indoor pool, and Student Service Offices which includes Admissions, Financial Aid, Housing, Enrollment Services, Business Office and Human Resources.

The lower level

includes newly renovated Student Weight Room, Cheer and Dance practice areas, basketball and volleyball courts, batting cages, indoor track, training room, indoor shooting/rifle range, classrooms and the Athletic Department offices.



JUNE



May

S	M	T	W	T	F	S
	1	2	3	4	5	
6	7	8	9	10	11	12
13	14	15	16	17	18	19
20	21	22	23	24	25	26
27	28	29	30	31		

July

S	M	T	W	T	F	S
1	2	3	4	5	6	7
8	9	10	11	12	13	14
15	16	17	18	19	20	21
22	23	24	25	26	27	28
29	30	31				

2012

Sunday	Monday	Tuesday	Wednesday	Thursday	Friday	Saturday
<i>HillTopics</i>	<i>Catch up on all the latest campus news and happenings at hilltopics.bartonccc.edu</i>				1 Priority Deadline to Apply for Summer 2012 Graduation Campus Closed, Summer Hours	2
3	4	5	6	7	8 Campus Closed, Summer Hours	9
10	11 No Drops/Withdrawals for 1 st 4-Week Session	12	13	14 Financial Aid Payout Flag Day	15 Campus Closed, Summer Hours	16
17 Father's Day	18 Last Day of Classes for 1 st 4-Week Session	19 First Day of Classes for 2 nd 4-Week Session	20 Summer Begins	21 Last Day for Late Registration for 2 nd 4-Week Session	22 Last Day for Refund for 2 nd 4-Week Session Campus Closed, Summer Hours	23
24	25	26	27	28 Financial Aid Payout	29 Campus Closed, Summer Hours	30

LEARNING wherever you are

HIGH SCHOOL "JUMP START" COURSES

Barton provides college classes to high school sophomores, juniors, seniors and gifted underclassmen.

Dual Credit/Concurrent Classes (College Advantage Program) - Barton offers college classes in your high school (within Barton's seven county service area).

Get Ahead Program (GAP) - Barton's on-campus afternoon college courses are designed to give high school students a sneak peek of coursework and what to expect in a college class environment.

OUTREACH PROGRAMS

College courses are available in our seven-county service area and the Grandview Plaza/Junction City area. Degree completion programs are available at participating sites.

BARTONline.org

BARTONline: 877-620-6606

\$130 per semester credit hour

BARTONline.org provides you the opportunity to earn or complete an Associate Degree online. Courses taken at other colleges and universities, plus any military and work experience, may be applied towards degree completion requirements at Barton.

eduKan

EduKan: 877-433-8526

\$125 per semester credit hour

EduKan.org is an online consortium consisting of Barton and five other community colleges. EduKan provides you another opportunity within the Barton family to obtain your Associate Degree online.

ONLINE LEARNING

We think you will find the overall cost very reasonable when compared to traveling and living on-campus at some colleges. Remember, you can be employed and study at the same time, because online courses can be taken around your busy schedule.

Each online learning entity charges one flat rate per semester credit hour, plus the cost of textbooks and additional materials. This fee is the same for all online students regardless of Kansas residency.

Costs for online courses are subject to change.

 **k-state** AT BARTON

K-STATE AT BARTON

The Kansas State University Wildcats and the Barton Community College Cougars have joined together to form a K-State at Barton partnership. The Cats and Cougars are working together to provide high quality, full service educational opportunities to people in Central Kansas.

The K-State at Barton Partnership brings education closer by:

- Offering distance education courses and bachelor's and master's degree programs to Central Kansas.
- Developing 2+2 partnerships between Barton and K-State.
- Assisting current Barton students with admission to Kansas State University.
- Providing area residents with opportunities for certification and degree completion as well as professional development.

For more information, contact Jennifer Pfortmiller at (620) 786-1188 or bartondce@ksu.edu, or visit the K-State at Barton website at www.dce.k-state.edu/affiliations/2+2/barton



JULY



June

S	M	T	W	T	F	S
					1	2
3	4	5	6	7	8	9
10	11	12	13	14	15	16
17	18	19	20	21	22	23
24	25	26	27	28	29	30

August

S	M	T	W	T	F	S
			1	2	3	4
5	6	7	8	9	10	11
12	13	14	15	16	17	18
19	20	21	22	23	24	25
26	27	28	29	30	31	

2012

Sunday	Monday	Tuesday	Wednesday	Thursday	Friday	Saturday
1	2	3	4 Independence Day (No Classes/Offices Closed)	5 No Drops/Withdrawals for 8-Week Session	6 Campus Closed, Summer Hours	7
8	9 No Drops/Withdrawals for 2 nd 4-Week Session	10	11	12	13 Campus Closed, Summer Hours	14
15	16	17 Last Day of Classes for 8-Week Session Last Day of Classes for 2 nd 4-Week Session	18	19 Fall 2012 Priority Registration Ends	20 Campus Closed, Summer Hours	21
22 Parent's Day	23 Fall 2012 Regular Registration Begins	24	25	26	27 Campus Closed, Summer Hours	28
29	30	31	 <p>Catch up on all the latest campus news and happenings at hilltopics.bartonccc.edu</p>			
						

LOCAL Opportunities

City of Great Bend

Listed as a "Best Places" city by *U.S. News & World Report*, come spend a day with great people in a great place ... Great Bend!!

With over 15,000 residents, visit Great Bend and find a wide variety of things to do while enjoying a small town with all the amenities of a small city.

COMMUNITY EVENTS

- Cinco de Mayo Celebration
- Championship Drag Racing
- The Barton County Fair with Fireworks Extravaganza
- Juneteenth - Celebration of African American freedom and heritage
- Polka Days
- Community Theatre in the historic Crest Theatre
- Barton County Historical Museum and Village
- Big Bend Bike Rally

BRIT SPAUGH PARK

- Brit Spaugh Zoo
- Skateboard park
- BMX bike park
- Baseball and softball diamonds
- Tennis courts
- Horseshoe pits
- Wetlands Aquatic Park

VETERAN'S MEMORIAL PARK

- Fishing lake
- Limited boating: canoe, kayak
- Ball field complex
- Baseball and softball fields
- Tennis courts
- Physical fitness trail
- Walking trail with floating bridge
- Floating fishing dock
- Argonne Forest
- Assorted play equipment
- Sand beach
- Sand beach volleyball
- Dog park



OTHER

Wetlands Aquatic Park

Zoom down the slides, soak in the sun, or kick back and relax in the shade at the Wetlands Aquatic Park. The Wetlands features 8 slides, 39 spray features, a 10,000sq. foot swimming pool, Water Wars, and **ONE BIG BUCKET** dropping over **300** gallons of water on top of anyone daring to stand below.

Trail of Lights

The award-winning Trail of Lights holiday displays are like coming home to a perfect little Midwestern Christmas village.

Cheyenne Bottoms Wildlife Refuge

Designated a "Wetland of International Importance," the refuge is a 41,000-acre basin-like lowland and is considered the largest marsh in the interior of the United States.



The L. E. "Gus" and Eva Shafer Memorial Art Gallery has been referred to as the "Gem of the Campus" at Barton. With 7,700 square feet of exhibit space, the gallery has over 7,000 annual visitors. Including the works of Shafer, the exhibit displays art from various artists, students, and exhibits from around the country.

AUGUST



July

S	M	T	W	T	F	S
1	2	3	4	5	6	7
8	9	10	11	12	13	14
15	16	17	18	19	20	21
22	23	24	25	26	27	28
29	30	31				

September

S	M	T	W	T	F	S
						1
2	3	4	5	6	7	8
9	10	11	12	13	14	15
16	17	18	19	20	21	22
23	24	25	26	27	28	29
30						

2012

Sunday	Monday	Tuesday	Wednesday	Thursday	Friday	Saturday
			1	2	3	4
	<i>Hilltopics</i>	<i>Catch up on all the latest campus news and happenings at hilltopics.bartonccc.edu</i>	Financial Aid Payout		Campus Closed, Summer Hours Summer Hours End	
5	6	7	8	9	10	11
			Professional Conference Day	Professional Conference Day	Fall 2012 Regular Registration Ends Professional Conference Day	
12	13	14	15	16	17	18
	Fall 2012 Classes Start					
19	20	21	22	23	24	25
					Last Day for Refund	
26	27	28	29	30	31	
						

About our campuses

Great Bend Campus

<http://bartonccc.edu>

The Great Bend campus serves as the main campus for Barton. We are located high atop a hill on 160 acres three miles northeast of Great Bend across the road from Bissells Point. The campus includes eight buildings in the main section of campus with four phases of student housing, the Cougar fields, and the Midwest Utility Pipeline Training Center located on the outskirts.

Learning facilities include numerous science labs as well as specially equipped labs for specific programs. Barton's attention to technology can be found in its ITV rooms, 35 SMART (hightech) classrooms, numerous computer labs, and technical program labs. A 40-foot dome theater with 66 seats, the Planetarium is equipped to recreate the night sky in amazing detail and offers programs free of charge as a public service.

The Mission of Barton Community College is to provide quality educational opportunities that are accessible, affordable, continuously improving and student focused. Barton is driven to provide an educational system that is learning-centered, innovative, meets workforce needs, and strengthens communities.

Fort Riley Campus

<http://fortriley.bartonccc.edu>

Fort Riley, home of "The Big Red One," is known for its excellent training, abundant recreational opportunities, rich history, and tremendous relations with surrounding communities. Barton Community College's proud association with Fort Riley and the U.S. Army began in 1984 with a single training contract and has continued to grow in support of the Army, its soldiers, their families, and the Junction City community.

The Barton Community College Fort Riley campus provides education and training, as well as selected specialized education and training to the entire state. In addition, Bartonline, Barton's premier site for online courses, is administered from the Fort Riley campus.

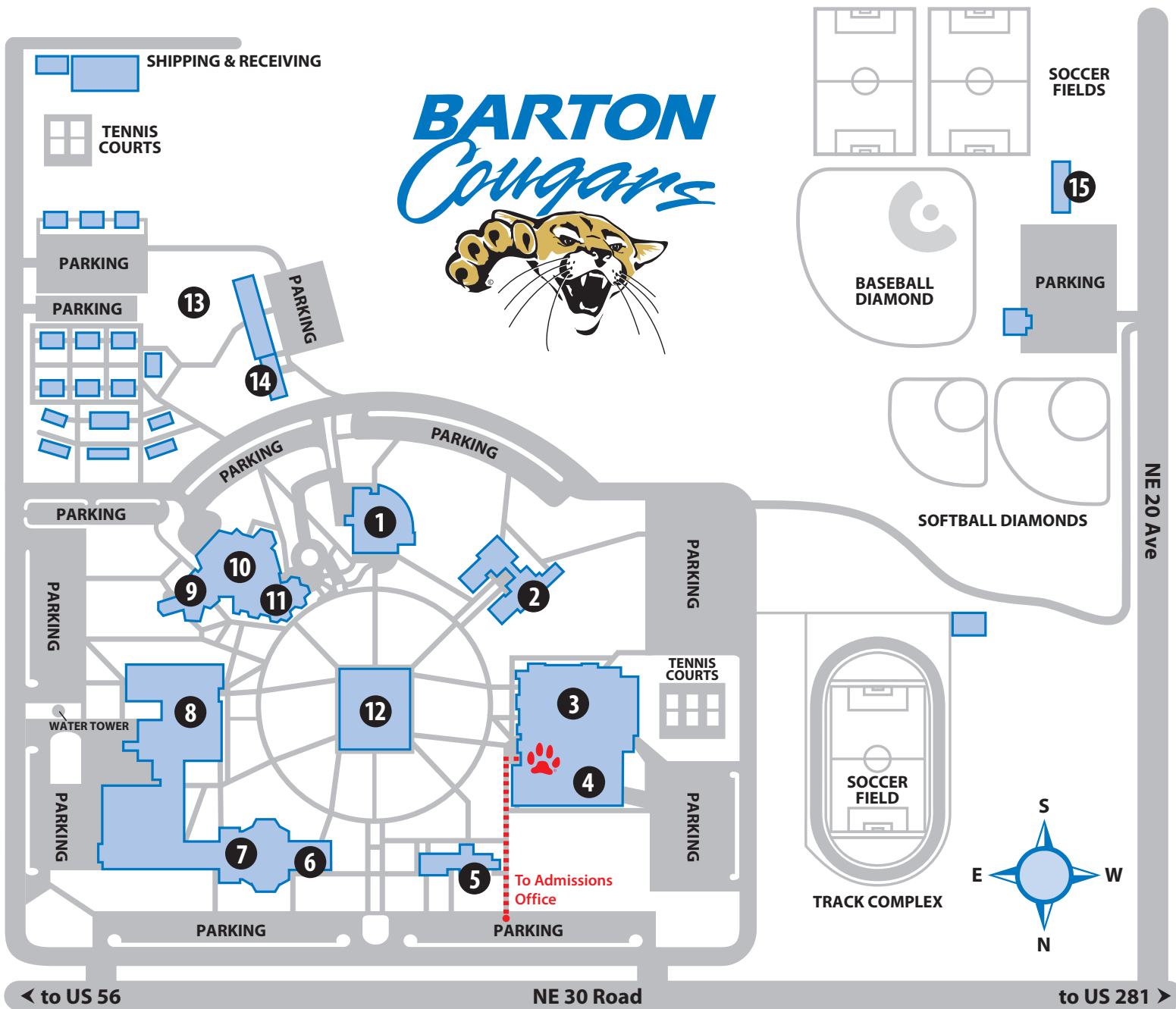
The Fort Riley campus administration building is located in Building 217 on the main post of Fort Riley.

This main office and two of the computer labs are across from the Fort Riley Museum and the Custer House. The campus also provides instructional services for Troop School, BSEP and LSEC which are located on Custer Hill.

Courses are also offered at a nearby outreach site located at Grandview Plaza. The Grandview Plaza outreach site is home to the Hazardous Materials Handling and Emergency Management programs, Emergency Medical Technician, and Paramedic programs.

The "Trooper Bill" statue stands as a tribute to the U. S. Cavalry symbolizing a man, a soldier, and of a service living on after him. Situated on the Cavalry Parade Field just north of the Barton-Fort Riley campus, this statue's base is also the resting place of "Chief" — the last horse carried on Army rolls as a cavalry mount. "Chief" died in 1968 and was buried with full military honors.





BARTON



- 1 U-Building Union
- 2 C-Building Classroom
- 3 P-Building Physical Education
- 4 Kirkman Student Activity Center
- 5 A-Building Administration
- 6 Planetarium
- 7 S-Building Science & Math
- 8 T-Building Technical Education
- 9 F-30 Seminar Room
- 10 F-Building Fine Arts
- 11 Shafer Gallery
- 12 L-Building Learning Resources Center
- 13 Student Housing
- 14 Child Development Center
- 15 Midwest Utility Pipeline Training Center

BARTON
COMMUNITY COLLEGE

245 NE 30 RD • Great Bend, KS 67530
www.bartonccc.edu • 800-722-6842

COUGAR CHECKLIST



Campus Tour - A great way to see if Barton is the place for you!



Admissions/Scholarship Application - Remember Barton's academic scholarship deadline is March 15. Application available online.



Submit ACT Scores or ASSET test scores - Haven't taken either of these assessment tests? No problem! Just give us a call and we'll get you taken care of.



Submit completed transcript(s) - Completed transcripts must be mailed directly to Barton Admissions Office to be official. Unofficial transcripts can be used for advising and obtaining academic information (GPA, ACT Scores, etc.)



Housing Application - Submit application and deposit early to get your first choice! Application available online.



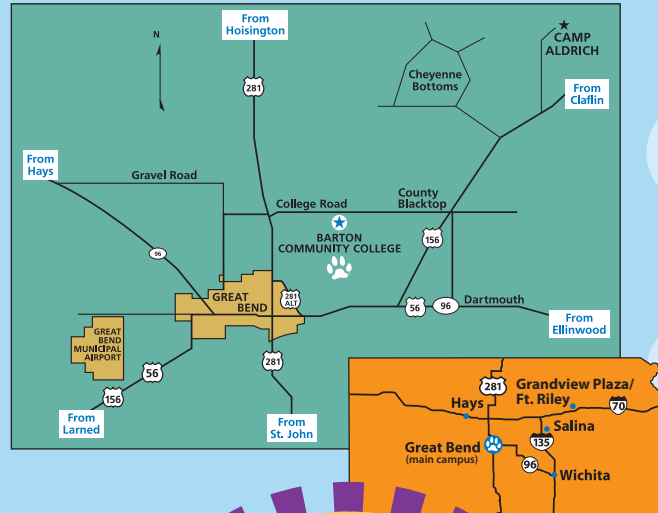
Financial Aid - Cost should not be a reason to rule out college! Visit www.fafsa.ed.gov for federal assistance or call us for even more options!

For more information, call the Admissions Office at 1-800-722-6842 or (620) 792-9286

Non-Discrimination Notice: To provide equal employment, advancement and learning opportunities to all individuals, employment and student admission decisions at Barton will be based on merit, qualifications, and abilities. Barton County Community College does not discriminate on the basis of any characteristic protected by law in all aspects of employment and admission in its education programs or activities. Any person having inquiries concerning Barton County Community College's non-discrimination compliance policy, including the application of Equal Opportunity Employment, Titles IV, VI, VII, IX, Section 504 and the implementing regulations, is directed to contact the College's Compliance Officer, Barton County Community College, Room A-123, Great Bend, Kansas 67530 (620) 792-9234. Any person may also contact the Director, Office of Civil Rights, U.S. Department of Education, Washington, DC 20201.

For more information about our graduation rates, the median debt of students who completed the program, and other important information, please visit our website at <http://ge.bartonccc.edu>

See You Soon!



Directory Information

WEB ADDRESS

www.GoBarton.com

BARTON COUNTY CAMPUS (main campus)

Local
(620) 792-2701

Toll-Free
1-800-748-7594

Address
245 NE 30 RD
Great Bend, KS 67530

FORT RILEY CAMPUS

Local
(785) 784-6606

Toll-Free
1-877-620-6606

Address
P.O. Box 2463, Building 217
Fort Riley, KS 66442
<http://fr.bartonccc.edu>

GRANDVIEW PLAZA OUTREACH SITE

Local
(785) 238-8550

Toll-Free
1-877-771-0255

Address
100 Continental Avenue
Grandview Plaza, KS 66441

ONLINE LEARNING OPPORTUNITIES

www.bartononline.org
1-877-620-6606

www.edukan.org
1-877-433-8526

FOLLOW US!

You Tube™ twitter

facebook flickr™