

TABLE OF CONTENTS

College Catalog | 2016-17

DIRECTORIES

Office Directory	2
Administrative Directory	5
Faculty Directory	5

GENERAL INFORMATION

About the College	11
Accreditation and Certification	12
Barton County Campus	12
Camp Aldrich Conference Center	12
BARTonline	13
Fort Leavenworth Campus	13
Fort Riley Campus	13
Hazardous Materials and Emergency Services Training Inst.	14
Barton Community College Foundation	14

GETTING STARTED

Admissions	15
Enrollment Procedure: Barton County Campus	18
Online Learning	18
Enrollment Procedure: Fort Riley Campus	18
Testing and Placement	19
Residency Statement	19
Financial Aid	20
Student Housing	22
Cost	23

STUDENT SERVICES

Activities	24
Advisement	24
Testing and Placement	24
Bookstore	25
Career Center	25
Child Development Center	25
Counseling	25
Computer Lab	25
Disability Services	25
Health Services	26
Library	26
Campus Safety	26
TRIO Programs	26
Tutoring	27
Veterans Services	27

ACADEMIC INFORMATION

Academic Integrity	28
Code of Conduct	28
College to University Articulation Agreement	28
Developmental Education	28
Military Service School Credit	29
Outcomes Assessment	29

PROGRAMS OF STUDY

Overview	30
Graduation Requirements	31
General Education Courses	35
Programs of Study	40
Program Descriptions	
Career Technical Education Programs	43
Transfer Programs	52

DISTANCE LEARNING OPPORTUNITIES

BARTonline	70
North Central Distance Learning Network	74
EduKan	74

OTHER EDUCATIONAL OPPORTUNITIES

Center for Adult Education	75
Workforce Training & Community Education Programs	75
Upward Bound Programs	75
Educational Opportunity Center	75
Silver Cougar Club	76
Hazardous Materials Emergency Services Training Institute	76
Midwest OSHA Education Center	77
Military On-Site Training (MOST)	86
University Partnerships and Local Opportunities	89
K-State at Barton	89
Course Descriptions	90

The material in this catalog is provided for informational purposes and does not constitute a contract. For example, courses, curricula, and degree requirements, fees and policies are subject to constant review and change without notice. Please consult our website at bartonccc.edu for the most current information.

Barton Community College is located in Barton County Kansas. Any controversy or claim of any nature, arising out of or relating to business done with Barton Community College, which controversy or claim cannot be amicably resolved, shall be settled in a court of competent jurisdiction in the State of Kansas. By doing business with Barton, each party consents and agrees to submit to the exclusive jurisdiction of said court and that Barton County Kansas shall be designated as the venue for the resolution of any claim.

Non-Discrimination Notice: To provide equal employment, advancement and learning opportunities to all individuals, employment and student admission decisions at Barton will be based on merit, qualifications, and abilities. Barton Community College does not discriminate on the basis of any characteristic protected by law in all aspects of employment and admission in its education programs or activities. Any person having inquiries concerning Barton Community College's non-discrimination compliance policy, including the application of Equal Opportunity Employment, Titles IV, VI, VII, IX, Section 504 and the implementing regulations, is directed to contact the College's Compliance Officer, Barton Community College, Room A-123, Great Bend, Kansas 67530, (620) 792-2701. Any person may also contact the Director, Office of Civil Rights, U.S. Department of Education, Washington, DC 20201.

CAMPUS DIRECTORIES

BARTON Cougars

SHIPPING & RECEIVING
TENNIS COURTS
PARKING
BASEBALL FIELD
SPORTS TRAINING FACILITY
SOFTBALL FIELD
WATER TOWER
SOCCER FIELD
TRACK COMPLEX
NE 20 Ave
NE 30 Road
to US 56
to US 281

- 1 U-Building Union
- 2 C-Building Classroom
- 3 P-Building Physical Education
- 4 Kirkman Student Activity Center
- 5 A-Building Administration
- 6 Planetarium
- 7 S-Building Science & Math
- 8 T-Building Technical Education
- 9 F-30 Seminar Room
- 10 F-Building Fine Arts
- 11 Shafer Gallery
- 12 L-Building Learning Resources Center
- 13 Student Housing
- 14 Child Development Center
- 15 Midwest Utility Pipeline Training Center

BARTON
COMMUNITY COLLEGE

245 NE 30 RD • Great Bend, KS 67530
bartonccc.edu • (800) 722-6842

Switchboard: (620) 792-2701
Campus Safety: (620) 792-9217

OFFICE DIRECTORY

■ Barton County Campus

245 NE 30 Rd, Great Bend, KS 67530
792-2701 or (800) 748-7594

Please note: all phone numbers have a 620 area code unless otherwise indicated, and on-campus extensions are the last 3 digits of phone numbers.

Administration

P-Bldg., Rm. 116A, 792-9235
deanm@bartonccc.edu

Admissions

P-Bldg., Rm. 107A
(800) 722-6842 or 792-9241
admissions@bartonccc.edu

Advisement Center

Learning Resources Center, Rm. 134, 792-9225
advisement@bartonccc.edu

Alumni Affairs

Student Union, Rm. 208, 786-1136
capec@bartonccc.edu

Assessment Center

Learning Resources Center, Rm. 130
792-9344
PlacementTesting@bartonccc.edu

Athletics

P-Bldg., Rm. 131
(800) 574-8153 or 792-9377
millerm@bartonccc.edu

Bookstore

Student Union, Rm. 215, 792-9229
peters@bartonccc.edu
kernsc@bartonccc.edu

Business Office

P-Bldg., Rm. 107A, 792-9321
businessoff@bartonccc.edu

Business, Technology & Community Education

T-Bldg., Rm. 137
(866) 813-2460 or 792-9358
furrowr@bartonccc.edu

Cafeteria (Great Western Dining)

Student Union, Rm. 126, 792-9259
servicef@bartonccc.edu

Camp Aldrich

884 NE 110 Ave., Claflin, KS 67525
786-7457
ammetert@bartonccc.edu

Campus Nurse

Student Union, Rm. 206, 792-9233
brockk@bartonccc.edu

Campus Safety

T-Bldg., Rm. 154, 792-9217
irelandj@bartonccc.edu

Career Center

Learning Resources Center, Rm. 133
792-9349
careercenter@bartonccc.edu

Center for Adult Basic Education

1025 Main, Great Bend, KS 67530
793-5794
lemonc@bartonccc.edu

Child Development Center

South Campus, 792-9360
grahaml@bartonccc.edu

Counseling

Learning Resources Center, Rm. 139
792-9295
maserj@bartonccc.edu

Disabled Student Services

Learning Resources Center, Rm. 110, 792-9240
disabilityservices@bartonccc.edu

Educational Opportunity Center

1025 Main, Great Bend, 786-7550
eoc@bartonccc.edu

Enrollment Services

P-Bldg., Rm. 107A, 792-9252
enrollmentservices@bartonccc.edu

Facility Management

T-Bldg., Rm. 154, 792-9340
helvieh@bartonccc.edu

Financial Aid

P-Bldg., Rm. 107A
(866) 257-2574 or 792-9270
financialaid@bartonccc.edu

Grants

A-Bldg., Rm. 123, 792-9234
oshiroc@bartonccc.edu

Human Resources

P-Bldg., Rm. 107A, 792-9237
humres@bartonccc.edu

Information

P-Bldg., Rm 107A
On campus dial 0 for information/college operator
(800) 748-7594 or 792-2701

Information Services

786-1100, or Ext. 100
helpdesk@bartonccc.edu

Institutional Advancement

Student Union, Rm. 209, 792-9308
frybergerm@bartonccc.edu

Instruction and Student Services

A-Bldg., Rm. 124, 792-9312
engelr@bartonccc.edu

Instructional/Institutional Research

A-Bldg., Rm. 115A, 792-9386
crutcher@bartonccc.edu
thoder@bartonccc.edu
willissr@bartonccc.edu
wornkeyj@bartonccc.edu

Intramural Sports

Student Union, Rm. 102, 792-9285
rogersm@bartonccc.edu

Learning Resources

Learning Resources Center, Circulation Desk
(888) 403-1900 or 792-9365
library@bartonccc.edu

Liberal Arts & Sciences

F-Bldg., Rm. 142, 792-9391
reedd@bartonccc.edu

Mathematics, English and Essential Skills & Sciences

C-Bldg., Rm. 115, 792-9200
vseteckaj@bartonccc.edu

Nursing and Healthcare Education

S-Bldg., Rm. 127, (800) 732-6842
kottask@bartonccc.edu, 792-9355
littrellj@bartonccc.edu, 792-9357
felkek@bartonccc.edu, 792-9266

President

A-Bldg., Rm. 122, 792-9302
schneidera@bartonccc.edu

Printing Services

T-Bldg., Rm. 109, 792-9343
knoblichr@bartonccc.edu

Public Relations & Marketing

C-Bldg., Rm. 137, 792-9307
steinertb@bartonccc.edu

Retired Senior Volunteer Program

1025 Main, Great Bend, KS 67530
792-1614, hoggl@bartonccc.edu

Shafer Gallery

F-Bldg., Rm. 25, 792-9342
barnesd@bartonccc.edu

Sports Information

P-Bldg., Rm. 25, 792-9310
mooret@bartonccc.edu

Student Activities

Student Union, Rm. 126, 792-9271
engled@bartonccc.edu

Student Housing

Student Union, Rm. 102,
792-9281 or 792-9285
dietzj@bartonccc.edu
rogersm@bartonccc.edu

Student Senate

Student Union, Rm. 127, 792-9227
senates@bartonccc.edu

Student Services

Learning Resources Center, Rm. 135
(866) 254-1421 or 792-9282
fullbrightv@bartonccc.edu

Student Support Services

Learning Resources Center, Rm. 110, 792-9240
dietzm@bartonccc.edu

CAMPUS DIRECTORIES

Upward Bound (Barton County)

Learning Resources Center, Rm. 110, 792-9219
dietzm@bartonccc.edu

Upward Bound (Central Kansas)

Learning Resources Center, Rm. 110, 786-1181
hensiels@bartonccc.edu

Veteran Services

Learning Resources Center, Rm. 134, 792-9363
VeteranServices@bartonccc.edu

Workforce Training and Community Education

S-Bldg., Rm. 147, (866) 813-2465 or 792-9324
schreiberd@bartonccc.edu

Workforce Training & Economic Development

T-Bldg., Rm. 198, (866) 813-2462 or 792-9255
kaiserc@bartonccc.edu

■ **Fort Leavenworth Location**

Fort Leavenworth Programs Office

Army Ed. Building, Room 4
120 Dickman Avenue
P.O. Box 3396
Fort Leavenworth, KS 66027
Phone number: (855) 509-3374

■ **Fort Leavenworth Office Directory**

Director

Leanne Miller

(785) 784-6606, Ext. 771, Toll Free (855) 509-3374
millerle@bartonccc.edu

Customer Service Representative

Michelle Merchant

(785) 784-6606, Ext. 770, and Ext. 772
Toll Free (855) 239-0821
merchantm@bartonccc.edu

Advisement

Tiffany Irizarry

Fort Leavenworth Programs Office, Fort Leavenworth
(785) 784-6606, Ext. 704, Toll Free (855) 509-3374
irizarryt@bartonccc.edu

Business Office

Abby Kujath

(785) 784-6606, Ext 712, Toll Free (855) 239-0821
kujatha@bartonccc.edu

Distance Learning

Fort Riley Programs Office
(785) 784-6606, Toll Free (866) 453-5118
sullivan@bartonccc.edu

Educational Opportunity Center

Junction City, (785) 238-5200
kruser@bartonccc.edu

Emergency Management & Hazardous Materials

Hazardous Materials & Emergency Services Training Institute
Grandview Plaza
(785) 238-8550, Toll Free (866) 452-1108
holmesl@bartonccc.edu

Emergency Medical Services Education

Hazardous Materials & Emergency Services Training Institute
Grandview Plaza
(785) 238-8550, Toll Free (866) 453-3890

Fort Leavenworth Support

Fort Leavenworth Programs Office, Fort Leavenworth
(785) 784-6606, Ext 771
Toll Free (855) 509-3374
millerle@bartonccc.edu

Hazardous Materials & Emergency Services Training Institute

Grandview Plaza, (785) 238-8550
Toll Free (866) 779-7621
nicholsc@bartonccc.edu

Fort Leavenworth and Fort Riley Academic Services

Fort Riley Programs Office, (785) 784-6606
Toll Free (866) 778-6752
strattona@bartonccc.edu

LSEC/BSEP/College

Fort Leavenworth Programs Office, Fort Leavenworth
(785) 784-6606, Ext. 771
Toll Free (855) 509-3374
millerle@bartonccc.edu

Military Programs

Fort Riley Programs Office, (785) 239-9769
lamprechte@bartonccc.edu

OSHA

Grandview Plaza, (785) 238-8550
Toll Free (866) 779-7621
greenb@bartonccc.edu

Tutoring

Fort Leavenworth Programs Office, Fort Leavenworth,
(785) 784-6606, Ext 771
Toll Free (855) 509-3374
millerle@bartonccc.edu

Veteran Services

Arlette Stratton, (785) 784-6606 Ext 715
Toll Free (866) 452-9391
VeteranServices@bartonccc.edu

■ **Fort Riley Campus, Grandview Plaza & Junction City Offices**

Advisement

Fort Riley Programs Office
(785) 784-6606, Ext. 709, Toll Free (866) 773-7879
chambersm@bartonccc.edu

Bookstore

Fort Riley Programs Office, (785) 784-6606

Business Office

Abby Kujath

Fort Riley Programs Office
(785) 784-6606, Ext. 712, Toll Free (866) 453-3896
kujatha@bartonccc.edu

Distance Learning

Fort Riley Programs Office
(785) 784-6606, Toll Free (866) 453-5118
sullivan@bartonccc.edu

Educational Opportunity Center

Junction City, (785) 238-5200
kruser@bartonccc.edu

Emergency Management & Hazardous Materials

Hazardous Materials & Emergency Services Training Institute
Grandview Plaza
(785) 238-8550, Toll Free (866) 452-3724
holmesl@bartonccc.edu

Emergency Medical Services Education

Hazardous Materials & Emergency Services Training Institute
Grandview Plaza
(785) 238-8550, Toll Free (866) 453-3890

Fort Riley Support

Fort Riley Programs Office
(785) 784-6606
strattona@bartonccc.edu

Hazardous Materials & Emergency Services

Training Institute

Grandview Plaza
(785) 238-8550, Toll Free (866) 779-7621
nicholsc@bartonccc.edu

Fort Riley & Fort Leavenworth Academic Services

Fort Riley Programs Office
(785) 784-6606, Toll Free (866) 788-6752
strattona@bartonccc.edu

LSEC/BSEP/FAST

Arlette Stratton

(785) 784-6606 ext. 715, Toll Free (855) 509-3368
strattona@bartonccc.edu

Military Programs

Fort Riley Programs Office
(785) 239-9769
lamprechte@bartonccc.edu

OSHA

Grandview Plaza
(785) 238-8550, Toll Free (855) 509-3376
greenb@bartonccc.edu

Tutoring

Fort Riley Programs Office
(785) 784-6606, Toll Free (866) 781-4302
turnerj@bartonccc.edu

Veteran Services

Arlette Stratton

(785) 784-6606 ext. 715, Toll Free (866) 773-7879
VeteranServices@bartonccc.edu

ADMINISTRATIVE DIRECTORY

■ Board of Trustees

Leonard Bunselmeyer, Great Bend
Gary Burke, Great Bend
Mike Johnson, Great Bend
Mike Minton, Great Bend
John Moshier, Hoisington
Don Learned, Great Bend

■ Administration

Dr. Carl Heilman

President

A-Bldg., Rm. 120, 792-9301
heilmanc@bartonccc.edu

Amye Schneider

Assistant to the President

A-Bldg., Rm. 122, 792-9302
schneidera@bartonccc.edu

Mark Dean

Dean of Administration

P-Bldg., Rm. 116A, 792-9235
deanm@bartonccc.edu

Trevor Rolfs

Director of Athletics

P-Bldg., Rm. P13D, 792-9378
rolfst@bartonccc.edu

Cathie Oshiro

Director of Grants

A-Bldg., Rm. 123, 792-9234
oshiroc@bartonccc.edu

Charles Perkins

Dean of Information Services

A-Bldg., Rm. 106, 792-9245
perkinsc@bartonccc.edu

Angie Maddy

Dean of Student Services

LRC, L-137, (620) 792-9322
maddy@bartonccc.edu

Nancy Wiebe

Executive Director of Institutional Advancement

Student Union, Rm. 207, 792-9367
wieben@bartonccc.edu

Dr. Robin Garrett

Vice President of Instruction and Student Services

A-Bldg., Rm. 115B, 792-9303
garretr@bartonccc.edu

FACULTY DIRECTORY

■ Instruction & Student Services

Robin Garrett

Vice President of Instruction and Student Services

A-Bldg., Rm. 115B, 792-9303
garretr@bartonccc.edu
B.S. Bellevue University
Educational Specialist Degree. Nova Southeastern
University
M.S. Nova Southeastern University
Ph.D. Nova Southeastern University

Academics

Richard Abel

Dean of Academics

F-Bldg., Rm. 139, 792-9333
abelr@bartonccc.edu
B.A. Morris Harvey College
M.S. Emerson College
Ed.D. University of Central Florida

■ Mathematics, English and Essential Skills & Sciences

Mathematics

Sarah Bretches

Instructor

C-Bldg., Rm. 122, 792-9218
bretchess@bartonccc.edu
B.A. Wichita State University

Joseph Harrington

Instructor

C-Bldg., Rm. 118, 792-9334
harringtonj@bartonccc.edu
A.S. Central Community College
B.S. Wayne State College
M.S. University of Nebraska-Lincoln

Kristen Hathcock

Instructor

C-Bldg., Rm. 121, 792-9348
hathcockk@bartonccc.edu
B.S. John Carroll University
M.E. Georgia State
Ph.D. Capella University

Brian Howe

Instructor

C-Bldg., Rm. 116, 792-9254
howeb@bartonccc.edu
B.S. Pittsburgh State University
M.S. Fort Hays State University

CAMPUS DIRECTORIES

Developmental Education

Carol Murphy

Instructor & Coordinator

C-Bldg., Rm. 123, 786-1170
murphyc@bartonccc.edu
B.S. Kansas State University
M.S. Kansas State University

Nolan Esfeld

Developmental Lab Coordinator

C-Bldg., Rm. 107, 786-1189
esfeldn@bartonccc.edu
A.S. Barton Community College

Abby Howe

Instructor

C-Bldg., Rm. 106, 792-9300
howea@bartonccc.edu
A.A. Coffeyville Community College
B.A. Emporia State University
M.A. Emporia State University

Nellene Kenyon

Instructor

C-Bldg., Rm. 125, 792-9202
kenyonn@bartonccc.edu
B.S. Kansas State University
M.S. Kansas State University

Jaime Oss

Instructor

C-Bldg., Rm. 117, 792-9269
ossj@bartonccc.edu
B.S. Emporia State University
M.A. Emporia State University

English

Stephannie Goerl

Instructor

C-Bldg., Rm. 119, 792-9261
goerls@bartonccc.edu
B.A. Fort Hays State University
M.S. Fort Hays State University

Teresa Johnson

Instructor

C-Bldg., Rm. 120, 792-9277
johnsont@bartonccc.edu
A.A. Barton County Community College
B.S. Emporia State University
M.S. Fort Hays State University

Stephanie Joiner

Instructor and Athletic Mentor

C-Bldg., Rm. 124, 792-9238
joiners@bartonccc.edu
B.A. Oklahoma State University
M.A. Pittsburg State University

Biology

Colleen Hampton

Instructor

S-Bldg., Rm. 130, 792-9331
hamptonc@bartonccc.edu
B.S. Kansas Newman College
B.S. Kansas State University
M.S. Fort Hays State University
M.S. Kansas State University

Chemistry

Amanda Alliband

Instructor

S-Bldg., Rm. 132, 792-9330
allibanda@bartonccc.edu
B.S. Wichita State University
M.S. Wichita State University
Ph.D. Wichita State University

Life Sciences

Oleg Ravitskiy

Instructor

S-Bldg., Rm. 131, 792-9335
ravitskiyo@bartonccc.edu
D.V.M. Moldova State Agrarian University

Physics/Physical Sciences/Astronomy

Timothy Folkerts

Instructor

S-Bldg., Rm. 103, 792-9320
folkertst@bartonccc.edu
B.A. Central College
Ph.D. University of California, Davis

■ Liberal Arts & Sciences

Dance

Amanda Schnoebelen

Head Coach (Dance Line & Cheer)

P-Bldg., Rm. 116, 786-1139
schnoebelena@bartonccc.edu
B.A. Wichita State University

Matt Engstrom

Assistant Coach (Dance Line & Cheer)

P-Bldg., Rm. 113, 792-9311
engstromm@bartonccc.edu

Art

Steve Dudek

Instructor

T-Bldg., Rm. 181, 792-9260
dudeks@bartonccc.edu
B.F.A. Northern Illinois University
M.A. Northern Illinois University
M.F.A. Northern Illinois University

Bill Forst

Instructor

F-Bldg., Rm. 137, 792-9387
forstb@bartonccc.edu
B.F.A. The Cleveland Institute of Art
M.F.A. Wichita State University

Communications

Kay Robinson

Instructor (Communication & Speech)

F-Bldg., Rm. 133, 792-9385
robinsonk@bartonccc.edu
B.A. Fort Hays State University
M.S. Fort Hays State University

Communications & Journalism

Peter Solie

Instructor

Student Union, Rm. 131, 792-9239
soliep@bartonccc.edu
B.A. University of St. Thomas
M.A. DePaul University
M.P.A. Drake University

History

Linda McCaffery

Instructor

F-Bldg., Rm. 132, 792-9251
mccafferyl@bartonccc.edu
B.S. University of Southern Colorado
M.A. University of Northern Colorado

Music

Vern Fryberger

Instructor (Vocal)

F-Bldg., Rm. 02, 792-9395
frybergerv@bartonccc.edu
A.A. Barton County Community College
B.M. Fort Hays State University
M.M. Fort Hays State University

Steven Lueth
Instructor (Instrumental)
F-Bldg., Rm. 08, 792-9396
lueths@bartonccc.edu
B.M. Fort Hays State University
M.M. Fort Hays State University

Karole Erikson
Instructor (Keyboard) (PT)
F-Bldg., Rm. 156, 792-9384
eriksonk@bartonccc.edu
B.M. The University of Kansas
M.L.S. Fort Hays State University

Glenna Gaunt
Instructor (Private Voice) (PT)
F-Bldg., Rm. 03, 792-9289
gauntg@bartonccc.edu
B.M.E. Wichita State University

Psychology

Randy Allen
Instructor
F-Bldg., Rm. 136, 792-9284
allenr@bartonccc.edu
B.A. University of Oklahoma
M.S. University of Oklahoma

Rick Bealer
Instructor
F-Bldg., Rm. 134, 792-9205
bealerr@bartonccc.edu
B.A. George Mason University
M.S. Central Missouri State University

Sociology

Ed Johnson
Instructor
F-Bldg., Rm. 135, 792-9389
johnsone@bartonccc.edu
B.S. Union College – Lincoln Nebraska
M.A. The University of Texas at Arlington

Theatre

Erin Renard
Instructor
F-Bldg., Rm. 138, 786-1187
renarde@bartonccc.edu
B.S. Fort Hays State University
M.S. Fort Hays State University

Workforce Training & Community Education

Elaine Simmons
Dean of Workforce Training & Community Education
S-Bldg., Rm. 143, 792-9214
simmonse@bartonccc.edu
B.S. Fort Hays State University
M.S. Fort Hays State University

Business, Technology & Community Education

Jane Howard
Executive Director of Business, Technology & Community Education
T-Bldg., Rm. 134, 792-9208
howardj@bartonccc.edu
B.S. University of Kansas
C.P.A.

Karly Little
Coordinator of Community Education
T-Bldg., Rm. 130, 792-9294
littlek@bartonccc.edu
A.A. Collins College
A.A. Yavapai College
B.S. Old Dominion University
M.F.A. Antioch University

William Rains
Coordinator of Correctional Education Services
T-Bldg., Rm. 101, 792-9244
rainsw@bartonccc.edu
A.S. Barton County Community College

Allan Collins
Instructor
Ellsworth Correctional Facility
collinsa@bartonccc.edu

Business/Accounting

Kathy Boeger
Instructor & Coordinator
T-Bldg., Rm. 126, 792-9203
boegerk@bartonccc.edu
A.S. Barton County Community College
B.B.A. Fort Hays State University
M.S. Fort Hays State University

Business Computer Management

Deanna Heier
Instructor
T-Bldg., Rm. 127, 786-1118
heierd@bartonccc.edu
B.B.A. Fort Hays State University
M.S. Fort Hays State University

Criminal Justice

Melissa Stevens
Instructor & Coordinator
T-Bldg., Rm. 133, 792-9299
stevensm@bartonccc.edu
B.S. University of Central Missouri
M.S. University of Central Missouri

Information Technology

Cristi Gale
Instructor & Coordinator
T-Bldg., Rm. 132, 786-1183
galec@bartonccc.edu
B.S. Buena Vista University
M.S. Western Illinois University
M.S. Kansas State University

Medical Support Programs

(Medical Assistant, Medical Transcription, Medical Coding & Medical Administrative Technology)

Kimberly Brennan
Instructor & Coordinator
T-Bldg., Rm. 131, 792-9326
brennank@bartonccc.edu
B.S.N. Newman University
M.S.E. Newman University

Nursing & Healthcare Education

Kathy Kottas
Executive Director of Nursing & Healthcare Education
T-Bldg., Rm. 88, 792-9355
kottask@bartonccc.edu
B.S.N. Bethel College
M.S.N. Wichita State University
D.N.P. Wichita State University

Dietary Manager

Marsha Finley
Instructor & Coordinator
finleym@bartonccc.edu
Associate's Barton County Community College
B.S. Kansas State University

CAMPUS DIRECTORIES

Emergency Medical Services Education

Karyl White

Director of Emergency Medical Services Education

T-Bldg., Rm. 142, 792-9347

whitek@bartonccc.edu

A.A.S. Hutchinson Community College and Area
Vocational School

B.S. Emporia State University

M.S. Emporia State University

Dean Dexter

Instructor (MICT & EMT)

Hazardous Materials & Emergency Services Training

Institute, Grandview Plaza

(785) 238-8550

dexterd@bartonccc.edu

B.S. Friends University

Jennifer Ladd

EMS Programming Specialist

T-Bldg., Rm. 182, 786-1110

laddj@bartonccc.edu

A.A.S. Hutchinson Community College and Area
Vocational School

Thomas Shuler

**Clinical Coordinator of Emergency Medical
Services Education**

T-Bldg., Rm. 123, 792-9341

shulert@bartonccc.edu

Medical Laboratory Technician

Cheryl Lippert

Director of Medical Laboratory Technician Program

S-Bldg., Rm. 129, 786-1133

lippertc@bartonccc.edu

B.S. Pittsburg State University

B.S.M.T. Pittsburg State University

M.B.A. William Woods University

Dana Weber

Instructor

S-Bldg., Rm. 134, 786-1113

weberd@bartonccc.edu

A.A. Barton County Community College

B.S. Kansas State University

Nursing

Sara Hoff

Nursing Remediation & Healthcare Programs

Coordinator

S-Bldg., Rm. 133, 792-9298

hoffs@bartonccc.edu

B.S. Fort Hays State University

Kara Brauer

Instructor (Nursing)

T-Bldg., Rm. 79, 792-9353

brauerk@bartonccc.edu

B.A. Luther College

M.S. Chamberlain College of Nursing

Brenda Glendenning

Instructor (Nursing)

T-Bldg., Rm. 91, 792-9264

glendenningb@bartonccc.edu

R.N.

B.S.N. Mid-America Nazarene College

M.N. Wichita State University

Karla Johnston

Instructor (Nursing)

T-Bldg., Rm. 82, 792-9351

johnstonk@bartonccc.edu

B.S. Wichita State University

Jill Lawson

Instructor (Nursing)

T-Bldg., Rm. 90, 792-9350

lawsonj@bartonccc.edu

B.S.N. Fort Hays State University

M.S.N. Fort Hays State University

Shannon Schreiner

Instructor (Nursing)

T-Bldg., Rm. 81, 792-9292

schreiners@bartonccc.edu

A.A.S. Barton Community College

B.S.N. University of Kansas

Renae Skelton

Instructor (Nursing)

T-Bldg., Rm. 80, 792-9356

skeltonr@bartonccc.edu

B.S. Fort Hays State University

Rose Smith

Instructor (CNA) (PT)

S-Bldg., Rm. 142, 786-1152

smithro@bartonccc.edu

A.A.S. Barton Community College

B.S. Tabor College

Pharmacy Technician

LaToya Hill

Instructor & Coordinator (PT)

hilll@bartoccc.edu

B.A. Ashford University

M.A. Ashford University

■ Workforce Training & Economic Development

Mary Foley

Executive Director of Workforce Training &

Economic Development

T-Bldg., Rm. 194, 792-9278

foleym@bartonccc.edu

B.S. Kansas State University

Agriculture

Victor Martin

Instructor & Coordinator

T-Bldg., Rm. 190, 792-9207

martinv@bartonccc.edu

M.S. Ohio State University

Ph.D. Ohio State University

Maggie Tracy

Instructor (PT)

T-Bldg., Rm. 191, 786-1120

tracym@bartonccc.edu

A.S. Colby Community College

B.S. Kansas State University

Automotive

Ron Kirmir

Instructor & Coordinator

T-Bldg., Rm. 180, 792-9338

kirmerr@bartonccc.edu

Auto Mechanics Program, Salina Area

Vocational-Technical School

Associate Barton County Community College

B.S. Friends University

Case New-Holland (CNH)

Mark Bogner

CNH Trainer (Instructor)

T-Bldg., Rm. 189, 792-9337, bognerm@bartonccc.edu
A.A.S. North Central Kansas Technical College
B.S. Technical Studies Fort Hays State University
B.S. Education Fort Hays State University

Early Childhood Education

Rhonda Wertz

Instructor & Coordinator

T-Bldg., Rm. 196, 786-1130, wertzr@bartonccc.edu
A.S. Pratt Community College
B.S. Fort Hays State University
M.S. Fort Hays State University

Natural Gas Transmission & Distribution Technician

Vincent Orth

Instructor (Gas Program)

T-Bldg., Rm. 195, 786-1191
orthv@bartonccc.edu

Adult Education

Chris Lemon

Coordinator of Adult Education

Adult Education, 1025 Main, Great Bend, KS
786-7563, lemonc@bartonccc.edu
B.S. Kansas State University
M.A. Kansas State University

Jamie Buehler

Instructional Specialist

Adult Education, 1025 Main, Great Bend
786-7564, buehlerj@bartonccc.edu
B.A. American Public University System
M.P.A. American Public University System

Kathryn Jackson

Instructional Specialist

Adult Education, 1025 Main, Great Bend, 786-7564
jacksonka@bartonccc.edu
B.A. Bethany College
M. E. Wichita State University

Ashley Norton

Instructional Specialist

Adult Education, 1025 Main, Great Bend, 786-7564
nortona@bartonccc.edu
B.S. Western Michigan University

Doris Reile

Instructional Specialist (PT)

Adult Education, 1025 Main, Great Bend
786-7565, reiled@bartonccc.edu
M.S. Fort Hays State University

Luke Seitz

Instructional Specialist

Adult Education, 1025 Main, Great Bend
786-7562, seitzl@bartonccc.edu
B.A. Bethany College

Susanne Yarmer

Test Proctor (PT)

Adult Education, 1025 Main, Great Bend
786-7566, yarmers@bartonccc.edu

■ Environmental Technology & Military Programs

Bill Nash

Dean of Fort Riley Technical Education & Military Outreach Training

Hazardous Materials & Emergency Services Training
Institute, Grandview Plaza
(866) 457-2828
nashw@bartonccc.edu
A.G.S. Barton County Community College
M.S. Fort Hays State University

Executive Director of Technical & Military Programs

Hazardous Materials & Emergency Services Training
Institute, Grandview Plaza
(866) 452-3724

Brandon Green

OSHA Program Coordinator

Hazardous Materials & Emergency Services Training
Institute, Grandview Plaza
Toll Free (855) 509-3376
greenb@bartonccc.edu
A.A.S. Barton County Community College
B.S. Kansas State University

Edward Dean

Instructor (OSHA)

Hazardous Materials & Emergency Services Training
Institute, Grandview Plaza
Toll Free (855) 509-3376
deane@bartonccc.edu
B.S. Geneva College

Lindsay Holmes

HZMT & EMHS Program Coordinator

Hazardous Materials & Emergency Services Training
Institute, Grandview Plaza
Toll Free (866) 452-3724, holmesl@bartonccc.edu
A.A.S. Hutchinson Community College and Area
Vocational School

Terri Mebane

Director of Military Programs

Fort Riley Programs Office, (785) 239-9769
mebanet@bartonccc.edu
B.S. Upper Iowa University

Walter Brown

Instructor

Fort Riley Programs Office, (785) 239-9769
brownw@bartonccc.edu
A.A.S. Barton County Community College

Eric Bundy

Instructor

Fort Riley Programs Office, (785) 239-9769
bundye@bartonccc.edu
A.A.S. Central Texas College
B.S. Upper Iowa University
M.B.A. University of Mary

Eugene Compton

Instructor

Fort Riley Programs Office, (785) 239-9769
comptone@bartonccc.edu
A.G.S. Barton County Community College
B.S. Upper Iowa University
M.S. Central Michigan University

Dennis King

Instructor

Fort Riley Programs Office, (785) 239-9769
kingd@bartonccc.edu
A.A.S. Central Texas College
B.S. Upper Iowa University

Locadio Perez

Instructor

Fort Riley Programs Office, (785) 239-9769
perezl@bartonccc.edu
A.G.S. Pikes Peak Community College
B.S. Upper Iowa University

CAMPUS DIRECTORIES

Christopher Vanderlinde**Instructor**

Fort Riley Programs Office, (785) 239-9769
vanderlind@bartonccc.edu
A.G.S. Barton County Community College

Lawrence Weber**Instructor**

Fort Riley Programs Office, (785) 239-9769
weberl@bartonccc.edu
A.A.S. Columbia Southern University
B.S. Columbia Southern University
M.S. Columbia Southern University

Shawn Wood**Instructor**

Fort Riley Programs Office, (785) 239-9769
woods@bartonccc.edu

■ Fort Riley Learning Services & Military Operations

Ashley Anderson**Dean of Military Academic Services**

Fort Riley Programs Office, (785) 784-6606
Toll Free (866) 775-9128
andersona@bartonccc.edu
B.A. Assumption College
M.B.A. University of Hartford

Janet Balk**College eCompanion & Hybrid Coordinator**

Fort Riley Programs Office
(785) 784-2152, Toll-Free (866) 779-7622
balkj@bartonccc.edu
B.A. Kansas State University
M.S. Kansas State University

Jim Turner**Tutor (Fort Riley)**

Fort Riley Programs Office
(785) 784-6606,
turnerjj@bartonccc.edu
B.A. Sterling College
B.S. Kansas State University
M.S.A. Central Michigan University

Laura Turner**Tutor (Fort Riley) (PT)**

Fort Riley Programs Office
(785) 784-6606
turnerl@bartonccc.edu
B.S. Sterling College

Kim Bradney**Instructor**

Fort Riley Programs Office
(785) 784-6606, Toll Free (855) 509-3368
bradneyk@bartonccc.edu
B.S. Kansas State University
M.S. Kansas State University

Jerry Butler**Instructor**

Fort Riley Programs Office, (785) 784-6606
butlerj@bartonccc.edu
B.A. Kansas State University
B.S. Kansas State University
M.A. Kansas State University

Wynn Butler**Instructor**

Fort Riley Programs Office, (785) 784-6606
butlerw@bartonccc.edu
B.A. Richmond College – University of Richmond
M.S. Kansas State University
Graduate United States Army Command and
General Staff College

Gilbert Cloud**Instructor**

Fort Riley Programs Office, (785) 784-6606
cloudg@bartonccc.edu
A.A. Frederick Community College
B.A. Seattle Pacific University
M.A. George Fox University
Master of Divinity Covenant Bible Seminary

Michael Cox**Instructor**

Fort Riley Programs Office, (785) 784-6606
cox@bartonccc.edu
M.A. State University of New York, College at Brockport

Charles Davis**Instructor**

Fort Riley Programs Office, (785) 784-6606
davisch@bartonccc.edu
M.A. Kansas State University
Ph.D. Duke University

Alissa Duncan**Instructor**

Fort Riley Programs Office, (785) 784-6606
duncana@bartonccc.edu
B.A. Kansas State University
M.A. Kansas State University

Kenneth Kolembe**Instructor**

Fort Riley Programs Office, (785) 784-6606
kolembek@bartonccc.edu
B.S. Kwame Nkrumah University of Science & Technology
M.S. University of Kaiserslautern

Mark Shipman**Instructor**

Fort Riley Programs Office, (785) 784-6606
shipmanm@bartonccc.edu
B.A. Kearney State College
M.S. Central Michigan University

Brenda Siebold**Instructor**

Fort Riley Programs Office, (785) 784-6606
sieboldb@bartonccc.edu
B.S. Kansas State University

■ Fort Leavenworth

Leanne Miller**Director of Fort Leavenworth Learning Services**

Fort Leavenworth Programs Office
(855) 509-3375
MIL: (913) 684-9384
Barton: (785) 784-6606, Ext 770
millerle@bartonccc.edu
B.A. Fort Hays State University
M.A. Wichita State University

ABOUT THE COLLEGE

bartonccc.edu/aboutbarton

The idea to create a community college in Barton County was introduced in the early 1960s at the Mayflower Café, a popular Great Bend restaurant on Forest Avenue where businessmen gathered for coffee and conversation. Those early proponents were dedicated to the proposition that everyone has the right to higher education.

Former Great Bend Tribune editor Paul Conrad, the Great Bend Jaycees and later the entire community was involved in bringing a community college to Barton County. Beginning with a feasibility study in 1960 and overcoming a 1962 election defeat, Barton Community College was founded in 1965.

J.A. Mermis chaired the original Board of Trustees. With the trustees at work long before the first students arrived, the college exceeded all expectations from the beginning.

When the college opened in the fall of 1969, more than 1,000 students enrolled in the first classes when only 525 were expected. Today, the college serves more than 13,000 students annually, averaging more than 6,000 headcount and more than 1,000 full-time equivalency each semester.

Throughout its history, the college has been dedicated to the philosophy that the individual is society's greatest resource and has relied on its greatest strength, its employees. From the care given to the physical plant to the individual attention given in its classrooms, the staff and faculty have successfully attracted students from all over the state of Kansas, the nation and beyond.

Barton graduates who transfer have performed as well or better than the university students who started at their respective colleges, according to the universities' reports. Community college students who have entered the

workforce have matched the success of their university peers.

The local citizenry and the college's faculty, staff and students put the "community" in Barton Community College and have spread its influence across the state and nation. The college has earned a reputation for its responsiveness to community needs, its adaptability to the changing environment, and its commitment to learning as a lifelong process.

MISSION

The Mission of Barton Community College is to provide quality educational opportunities that are accessible, affordable, continuously improving and student focused. Barton is driven to provide an educational system that is learning-centered, innovative, meets workforce needs, and strengthens communities.

We will seek to achieve our mission through five interrelated themes that define our commitment to excellence in education:

Empowerment

We strive to empower all students to formulate and realize educational goals which will promote their personal growth and facilitate their full participation in a rapidly changing world.

Learning

We invite and assist all students to master a core of knowledge and skills needed for advanced learning, employment, personal growth, and responsible citizenship.

Evaluation

We evaluate the relevant skills and knowledge acquired by all students so as to enhance their meaningful and productive educational experiences. Similarly, Barton evaluates its performance in terms of its contribution to student learning and success.

QUICK FACTS

Founding of the College	April 6, 1965
Governing Body	Six-member elected board of trustees
First Fall Enrollment (1969)	935 students
Students Served Annually	13,000 plus
Average Student Age	29.4
Colors	Royal Blue and Light Gold
Mascot	Cougar
Fight Song	"Great to be a Cougar"
NJCAA Championships	55

BARTON COUNTY CAMPUS

Site	East of Bissells Point
Size	160 acres
Buildings	8
Students Served Annually	7,000 plus
Average Class Size	12
Student Accessible PCs	300 plus
Student Housing Capacity	340

FORT RILEY CAMPUS

Started	1984
Students Served Annually	6,400 plus
Average Class Size	14.5

FORT LEAVENWORTH CAMPUS

Started	October 2012
Students Served Annually	458
Average Class Size	9

COLLEGE PRESIDENTS

1969 - 1972	Dr. Otis Robinson
1972 - 1975	Dr. Paul Hines
1975 - 1996	Dr. Jimmie Downing
1996 - 2005	Dr. Veldon Law
2005 - 2006	Dr. Stephen Maier (Interim)
2006 - Present	Dr. Carl Heilman

Discovery

Because we are a force for innovation, we continually strive to discover better ways to empower all students to learn and grow. Barton is a learning institution in both its means and its ends; we facilitate our students' discovery of what they need and want to know.

Growth

We strive to grow each year in our ability to accomplish our mission through purposeful enrollment and a commitment to quality.

GENERAL INFORMATION

Accreditation and Certification

bartonccc.edu/accreditation

Barton Community College is accredited by the Higher Learning Commission and is a member of the North Central Association, 30 North LaSalle Street, Suite 2400, Chicago, IL 60602-2504, 800-621-7440, hlcommission.org. Also, Barton Community College is accredited under the provisions of the Kansas Community Junior College Act of 1965 and is a member of the American Association of Community Colleges as well as the Council of North Central Junior Colleges.

Automotive Technology

auto.bartonccc.edu

The Automotive Technology Program is certified by the National Automotive Technicians Education Foundation (NATEF).

Website: natef.org

Emergency Medical Services

ems.bartonccc.edu

Barton's program is structured around the National Standard Curriculum and is nationally recognized and accredited by the Commission on Accreditation of Allied Health Education Programs (CAAHEP)

Website: caahep.org

Medical Laboratory Technician

mlt.bartonccc.edu

The MLT Program is accredited by the National Accrediting Agency for Clinical Laboratory Sciences (NAACLS).

Website: naacls.org/search/programs.asp

Nursing

nursing.bartonccc.edu

The Nursing Program is approved by the Kansas State Board of Nursing and accredited by the Accrediting Commission of Education in Nursing, 3343 Peachtree Road NE, Suite 850, Atlanta, GA 30326

Phone: (404) 975-5000,

Fax: (404) 975-5020

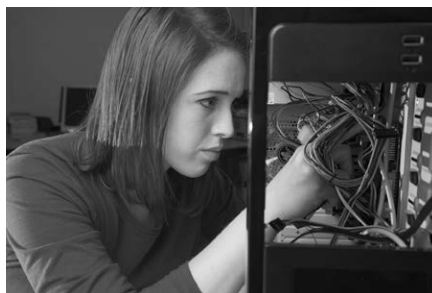
Website: acenursing.org

BARTON COUNTY CAMPUS

The Barton County campus is located on 160 acres, three miles northeast of Great Bend, across the road from Bissell's Point. The campus includes nine buildings in the main section of campus with four buildings of student housing and the Cougar Athletics Fields located on the outskirts.

Students find it easy to get around campus with the Learning Resource Center at the hub and the Science and Math Building, Technical Building, Fine Arts Building, Student Union, Classroom Building, Physical Education Building, and Administration Building forming a circle around the LRC.

Learning facilities include numerous science labs, some of which are equipped for specific programs. The College's attention to technology can be found in its ITV rooms, 35 smart classrooms,



As more college instructors use the web to support their classes, access to a computer becomes even more necessary. A computer

not only helps you do your course work, it's often needed to get your course work in the first place as well as to turn it in, to take tests and to communicate with your instructor.

If you do not have computer access at your residence, the Barton County Campus has computer labs and wireless access points across campus and in Student Housing. Additionally, there may be other access points available to you in your community through public libraries or schools. You do have to be on campus to use our computers so convenience makes it worth considering the purchase of your own.

numerous computer labs and technical program labs. The Planetarium offers programs free of charge as a public service. A 40-foot dome theater with 66 seats, the Planetarium is equipped to recreate the night sky in amazing detail.



Cultural facilities include an 840-seat auditorium and the Shafer Art Gallery. Named for Hoisington, Kan., native and internationally known artist Gus Shafer and his wife, Eva, the gallery schedules shows of local, regional and national interest. Barton's Permanent Art Collection features more than 800 pieces in its collection, including more than 25 Shafer bronzes and more than 100 works by Great Bend native Charles B. Rogers.

Recreational facilities include an all-weather track; tennis courts; baseball, softball and soccer fields; a basketball and volleyball arena; an indoor swimming pool; the Windy Hill Disc Golf Course; and the Kirkman Student Activity Center, which houses indoor practice facilities; a fitness center, spring floor and the Thelma Harms Wellness Center.

Barton offers on-campus housing for 340 students in a comfortable and fun setting for both men and women. Living on campus enhances students' opportunities to meet other students and adapt to college life easier and quicker. Conveniences like free cable and free Internet are available in each room.

CAMP ALDRICH CONFERENCE CENTER

campaldrich.bartonccc.edu

The Camp Aldrich Conference Center, situated on 290 acres of rolling sand hills

northeast of the college, features a classroom facility, cabins, a swimming pool, tennis courts, and much more.

Located approximately two miles north of Highway 156 between Claflin, Kan., and Cheyenne Bottoms Wildlife Refuge, the camp features 40 heavily-wooded acres preserved as a wilderness area. Buildings of rough cedar and unique roof-lines blend into the rolling sand hills. Approximately 70 species of wild flowers and grasses and 57 different species of birds have been identified by campers. Some of the birds are on the endangered species list.



The camp property is composed of the Administration Building, parking lot, the Dining Hall, five lodges that can also be used for seminars and classrooms, a pool and a bathhouse. The day camp area has five shade shelters, much like those in recreational parks. Latrines and washstands are also located at each shelter.

For reservations or information, contact the Facility Management Office, Barton Community College, 245 NE 30 RD, Great Bend, KS 67530, 792-9340.

BARTONLINE

BARTonline.org

Barton Community College operates a virtual campus, BARTonline, using a Learning Management System that allows students to choose the best time for them to complete assignments within each unit.

BARTonline.org
YOUR COMMUNITY COLLEGE SOLUTION

Courses utilize weekly blocks that allow students to determine the best time of day

and the best days of the week to attend class. Students can take a single class or pursue and earn a variety of degree and certificate programs. Students may also take classes for the purpose of transfer to other institutions.

Courses are offered in nine and seventeen-week formats. Fall and spring semesters each contain two nine-week and one seventeen-week session. The summer session is nine weeks long. There are also a couple of four-week sessions throughout the year. Each of the courses listed in the BARTonline catalog is offered at least once each semester. There are no minimum class size limits so classes are never canceled because of low enrollment or capped due to high enrollment.

The college's accreditation by The Higher Learning Commission (hlcommission.org) has been expanded to include offering associate degrees and certificates online. Students may earn an associate in arts, associate in science, or associate in general studies degree as well as an associate in applied science degree in some career technical education programs.

FORT LEAVENWORTH CAMPUS

FL.bartonccc.edu

Fort Leavenworth is the oldest military installation west of the Mississippi River. It was established in 1827 as a forward operating base to protect the Santa Fe and Oregon Trails. Lewis and Clark explored the area where the fort is located between 26–29 June in 1804. Fort Leavenworth is historically known as the "Intellectual Center of the Army." This tradition began in 1881, when



General William T. Sherman established the School of Application for Cavalry and Infantry. The school evolved into the U.S. Army Command and General Staff College (CGSC), which currently resides at Fort Leavenworth. Today, Fort Leavenworth covers 5,634 acres and houses over 3,600 permanent party soldiers. Many of these soldiers stationed at Fort Leavenworth support the United States Disciplinary Barracks (USDB) which is the only maximum security correctional facility in the Department of Defense and the oldest penal institution in continuous operation in the Federal prison system. In addition to the soldiers "permanently" stationed at Fort Leavenworth, 1,400 students and their families also reside on the installation during their nine-month assignment to CGSC (Command and General Staff College.)

The Barton Fort Leavenworth campus provides education and training to the total military family. The Fort Leavenworth campus administration office, classrooms, and computer labs are located in Building 62. The campus also provides instructional services for Military Schools Program, Basic Skills Enhancement Program (BSEP), and Leadership Skills Enhancement Courses (LSEC) as well as evening and weekend college courses.

FORT RILEY CAMPUS

FR.bartonccc.edu

Fort Riley, the home of "The Big Red One," is known for its excellent training, abundant recreational opportunities, rich history and tremendous relations with surrounding communities. Barton Community College is proud of its association with Fort Riley and the U.S. Army, which began in 1984 with a single training contract and has continued to grow in support of the Army, its soldiers and their families.

The Barton-Fort Riley campus provides education and training to the total military family as well as selected

GENERAL INFORMATION

specialized education and training to the entire state. The campus provides 7 degree programs. In addition, BARTonline, the college's site for online courses, is administered at the Fort Riley campus.



The Fort Riley campus administration building is located in Building 217 on the Main Post of Fort Riley, located across from the Fort Riley Museum and the Custer House. The campus provides instructional education for the on-duty educational programs for Basic Skills Enhancement Program (BSEP) and Leadership Skills Enhancement Courses (LSEC), and evening and weekend courses, with all courses leading to a degree. Classrooms are located on Main Post and Custer Hill. Barton provides the Fort Riley Tutor Center for the students of the seven consortium schools on Fort Riley (Kansas State, Southwestern, University of Mary, Central Michigan University, Upper Iowa University, and Central Texas College). Barton provides the DANTES test site for CLEP and DSST for Fort Riley and the surrounding area students. Courses also are offered at the Hazardous Materials and Emergency Services Training Institute located at 100 Continental Ave., Grandview Plaza, KS

HAZARDOUS MATERIALS AND EMERGENCY SERVICES TRAINING INSTITUTE

hmesti.bartonccc.edu, bartonsafety.org
The Hazardous Materials and Emergency Services Training Institute located at 100 Continental Avenue in Grandview Plaza, KS, offers training in hazardous materials

management, emergency management/homeland security, occupational safety and health and courses in Emergency Medical Technician and Paramedic, which may lead to certificates and an associate degree.

Military Schools Program

military.bartonccc.edu/military-schools

Military Schools Program provides centralized vocational training to the soldiers of Fort Riley. The program's secondary mission is to provide training to U.S. Government employees and other members of the total Army family.

Military On-Site Training Program (MOST)

military.bartonccc.edu/most

The Military On-Site Training Program (MOST) is designed to enhance the readiness posture of U.S. Army Reserve and National Guard units by delivering cost effective and flexible skills-based training at the unit's location.



BARTON COMMUNITY COLLEGE FOUNDATION

bartonccfoundation.org

Since 1967, the Foundation has provided Barton with the private resources necessary to fulfill its mission of providing educational, cultural and social opportunities. The Foundation supports academic scholarships, program development, facilities and equipment. The



Foundation coordinates annual friend/fundraising activities and events to benefit the college.

Students, complete the Foundation's one-page application online or in person by the preference deadline of June 1. Foundation scholarships are in addition to any awarded by the College.

For more information on how you can advance academics through the Barton Community College Foundation, contact us at 245 NE 30 RD, Great Bend, KS 67530, (620) 792-9306. All donations are tax deductible.

Silver Cougar Club

bartonccc.org

Silver Cougar Club is a membership organization for anyone 55 years or older residing within the seven-county Barton Community College service area.



Membership benefits include special events and activities throughout the year, reduced fees for classes, admission to sporting events, socials and a bi-monthly newsletter. Dues are \$15 single or \$25 for a married couple. For more information, contact the coordinator at (620) 786-1136 or the Barton Community College Foundation at (620) 792-9306.



ADMISSIONS

Rights of the College

The College reserves the right to deny a student admission or readmission if considered detrimental to the best interests of the college community or if the College is unable to provide the services, courses or program(s) needed to assist the student in meeting educational objectives.

Admissions Procedure

Students must apply for admission either electronically or by submitting a paper application.

In compliance with Kansas Statute KSA 2009 Supp. 65-129, the College has instituted a tuberculosis prevention and control policy for students. All students applying for admission to Barton with classes in classroom setting, will be required to complete a Tuberculosis Screening Questionnaire. **VERY IMPORTANT:** A yes response to **ANY** of the five questions will classify the student in a “high risk” tuberculosis category as defined by the Kansas Department of Health and Environment guidelines. These students will be required to complete a Tuberculosis Assessment at the local health department, medical clinic or BCC Student Health prior to attendance in a college classroom. Failure to comply will result in holds on further enrollments and the release of permanent transcripts.

ADMISSIONS POLICY: SPECIAL STUDENT

A person can be admitted to Barton Community College as a special student if the student:

- Is not seeking an approved certificate or degree from Barton
- Is taking classes for personal enrichment
- Is a high school/home school sophomore, junior or senior with written permission from the high school/home school administrator
- Is a high school/home school student enrolled in an approved gifted program with written permission from the high school/home school administrator
- Is taking classes to transfer to another school

*Special students are not eligible for federal financial aid and some institutional aid. Student services such as advisement are available at the student’s request.

ADMISSIONS POLICY: REGULAR STUDENT

Students admitted to Barton as Regular Students are those individuals who the College has deemed as degree- or certificate-seeking from Barton and eligible for graduation upon completion of the degree requirements. A student admitted as a regular student must request official transcripts (secondary, post-secondary, and/or GED) from all previously attended institutions to be sent directly to Barton. **NOTE:** Students not submitting all official transcripts from all previously attended

institutions prior to completion of entering term will be changed to a “Special Student” for the next term.

The following degree- or certificate-seeking students will be admitted as Regular Students:

- The student must declare a degree or certificate program of study, and
- A graduate of an accredited high school, or
- A graduate of a recognized home school, or
- A student who has passed the General Education Development (G.E.D.) examination.

Selective Admissions Policy

Admission to Barton Community College does not guarantee acceptance and/or enrollment in the following programs. Additional admission requirements are required.

- Emergency Medical Services – Paramedic
- Medical Laboratory Technician
- Nursing

Emergency Medical Services – Paramedic Students

ems.bartonccc.edu

Barton is one of only seven accredited paramedic programs in Kansas with faculty and staff having over 100 years of combined EMS experience. Offering the largest EMS education service area of any community college in Kansas, Barton’s program makes education convenient and accessible.

Barton’s program uses the National Standard Curriculum and is nationally recognized and accredited by the Commission on Accreditation of Allied Health Programs (CAAHEP). Website: caahep.org

Admission Procedure

Students seeking admission to the Paramedic program must be admitted to the college and must also apply for admission to the Paramedic program. Admission to the college does **NOT** automatically mean admission into the Paramedic program. For more information contact the Emergency Medical Services Office at 792-9341 or thomasa@bartonccc.edu.

Application Process:

Complete Application Form for Barton’s Paramedic Program

1. Complete student portion of “Barton Allied Health Programs History & Physical Form”
2. Schedule a physical exam with your physician. Have your physician complete the appropriate section of the “Barton Allied Health Programs History & Physical Form.” **NOTE:** You will be required to provide copies of immunization records as well as complete the Barton immunization form.
3. Request a “Student Copy Transcript” from any and all education institutions that you have attended. Enclose this transcript in your application packet. If you have been a Barton

GETTING STARTED

student, or have already sent official transcripts to Barton, you may call Barton's Enrollment Services and request that a copy of your transcript is sent to the EMS Department, c/o of Karyl White. If you are not sure if you have enough General Education requirements please see the Paramedic "Associate in Applied Science" template. **NOTE:** You will be required to send official college and high school transcripts to Barton's registrar's office prior to graduation.

4. Enclose a copy of your current Kansas EMT card.
5. Enclose two (2) professional letters of recommendation from two (2) other people than those you listed as references on your "Paramedic Application Form."
6. Applications must be received in EMS office by July 31 for classes starting in January and April 30 for classes starting in August.
7. Dates, times, and locations for the written, skills, and oral interview examinations will be scheduled approximately two (2) months prior to the start of classes. You will be notified by either phone or email confirming these dates.

Medical Lab Technology Students

mlt.bartonccc.edu

Barton's Medical Lab Technology Program combines the value of tradition with the enhancements of innovation. Barton's MLT Program graduates are well respected in the field. Clinical partners provide internships, giving students hands-on experience and access to state-of-the-art equipment. The MLT curriculum leads to an Associate of Applied Science degree and eligibility to take a national certification examination. This Program can also be a bridge to a 4 year Bachelors of Science in Clinical Laboratory Science. Barton's MLT Program is fully accredited by the National Accrediting Agency for Clinical Laboratory Sciences, 5600 North River Road, Rosemont, IL, 60018-5119, (773) 714-8880

Admission Procedure

Students seeking admission to the Medical Lab Technology program must be admitted to the college and must also apply for admission to the MLT program. Admission to the college does NOT automatically mean admission into the MLT program. For more information contact the MLT secretary at (888) 423-1711 or the MLT Program Director, Cheryl Lippert, at 786-1133 or lippertc@bartonccc.edu.

Application Process:

1. Apply to the college, submitting all college and high school transcripts
2. Apply separately to the MLT program at this link: bartonccc.edu/careerprograms/medlabtech. (online application only) Deadlines for application are April 15 for August entry and October 31 for January entry.
3. Set up Verified credentials account after notification by program representative. Includes: background check, health

forms, immunization records, current TB test/chest x-ray, proof of current health insurance, current CPR proof.

4. Upon completion of all documents and an interview, the selected applicants for the Program are notified by email of admission or conditional admission for the August or January entry date. The remaining applicants are referred for career counseling.

Acceptance is limited by readiness to enter the program, therefore students are selected based on the following criteria: a.) the applicant's interview b.) academic credentials c.) cooperative lab support d.) general education course completion including phlebotomy national certification eligibility e.) references/employers as solicited by applicant.

Nursing Students

nursing.bartonccc.edu

Barton's well-rounded and demanding coursework, along with experienced and dedicated faculty, prepares you with the skills needed to face just about any nursing environment. The curriculum will educate you on many aspects of nursing care from pre-birth to death.

A career in nursing provides a wide variety of job opportunities. Nurses practice in many settings (hospitals, long term care facilities, community agencies, clinics, schools) and care for all age groups.

Barton offers 2 types of programs for people wanting to enter the field of nursing: Certificate in Practical Nursing (PN) and an Associate in Applied Science Degree in Nursing (ADN). A student completes the first two semesters of the program to earn a PN certificate and is eligible to take the CLEX-P® to become a Licensed Practical Nurse. The graduate then can decide to continue their education or enter the work force.

When the LPN wants to continue their education they may apply for the second year of the nursing program, graduates will receive the Associate in Applied Science degree and is eligible to take the CLEX-R® to become a Registered Nurse. Barton Nursing is approved by the Kansas State Board of Nursing and the Associated Degree Nursing Program is accredited by:

Accreditation Commission for Education in Nursing (ACEN)

3343 Peachtree Road NE, Suite 850, Atlanta, GA 30326

Phone: (404) 975-5000

Fax: (404) 975-5020

Website: acenursing.org

Admission Procedure

Students seeking admission to the nursing program must be admitted to the college and must also apply for admission to

the nursing program. Admission to the college does NOT automatically mean admission into the nursing program.

For the complete nursing admission procedure go to nursing.bartonccc.edu or contact the nursing office at 792-9357 for an admission packet.

Note: Possession of a misdemeanor or felony conviction may preclude acceptance into the nursing program and/or licensure as a Licensed Practical Nurse or Registered Nurse in the state of Kansas. (Statute Kansas Nurse Practice Act 65-1120).

SPECIAL NOTES:

Former Barton Students

Regular students who have attended Barton and then dropped out/stopped for one year or longer, or who have completed a degree or certificate must submit a new application for admission. Students must provide official transcripts of all college credits earned since the last semester of attendance at Barton.

Home School Students

Home school credit evaluations may be submitted in lieu of a transcript or diploma from the school administrator.

Transfer Students

A transfer student is eligible for admission to Barton Community College if eligible to re-enter the institution last attended and in compliance with other requirements of the College.

Individuals who are on academic probation, suspension or dismissal from another college, may apply for admission. If accepted, the student will be admitted according to the Academic Progress Policy which places the student on a one-semester probation.

Barton accepts transfer credit earned at regionally accredited colleges in the United States. Transfer credits will be accepted from colleges and universities starting from the year they are accredited or hold candidacy status with the North Central Association of Colleges and Schools, Middle States Association of Colleges and Schools, New England Association of Colleges and Schools, Northwest Association of Colleges and Schools, Southern Association of Colleges and Schools, and the Western Association of Colleges and Schools.

Transfer credit from institutions recognized by CHEA (www.chea.org) and/or the US Department of Education are subject for review by the Registrar and the Vice President of Instruction and Student Services. Transfer credit from non-accredited institutions will not be accepted at Barton unless approved by the Registrar and/or the Vice President of Instruction and Student Services. All transfer hours will be equated on the semester-hour

system. All credits and grades including repeated courses will be listed on the Barton transcript and calculated into the student's cumulative grade point average.

To be eligible for graduation, students must have completed at least 15 hours out of the required sixty-four (64) hours from Barton Community College. Students seeking a certificate from Barton must have completed at least 25% of the required courses from Barton.

When a course taken at another institution is repeated at Barton, the College shall accept the most recent grade to calculate the student's grade point average or satisfy course and/or graduation requirements.

Students seeking a degree/certificate from Barton need to provide all official transcripts for previous coursework.

Non-degree students are not required to submit transcripts unless it is needed for a course prerequisite. Non-degree seeking student's transcripts will be kept on file and only evaluated as needed and/or as requested by the student.

Army Enlistees

The Concurrent Admissions Program (ConAP) is a joint program of the Army Recruiting Command, Servicemembers Opportunity Colleges (SOC), and the College. As an eligible Army enlistee, individuals will be admitted to the College concurrent with enlistment, defer enrollment for classes for up to two years after discharge and matriculate as a veteran after leaving active duty.

International Students

- International students must adhere to all Barton Community College admissions policies.
- An international admissions packet must be submitted for review by May 1 for the fall semester and October 1 for the spring semester.
- A TOEFL score of 500-paper/73 computer is required. Students from an English speaking country are not required to take the TOEFL. A conditional admission may be allowed for a TOEFL score under 500/73. Enrollment will be restricted under this conditional admission. Students may be required to enroll in appropriate English as a Second Language course(s) upon arrival in addition to their academic program of study.
- Proof of graduation from a secondary school or equivalent is required. All transcripts from the secondary school or any college/universities attended of prior work must include certified English translations. Faxed or copies will not be accepted as official.
- New international students will be charged a one-time nonrefundable application/enrollment fee of \$150 after

GETTING STARTED

completing their initial enrollment at Barton Community College.

- All admissions criteria must be met before housing application forms are approved. The housing deposit fee is required before acceptance is granted to the College.
- Each student is required to have adequate medical insurance
- Each student must provide copies of their immunization record in English. **IMMEDIATELY ON ARRIVAL TO CAMPUS** arrangements must be made with Student Health Services to have a medical assessment, TB screening and review of immunizations. These assessments are **MANDATORY** prior to attending classes.
- The minimum academic year expense is \$12,000. However, students should plan to bring more than this amount so that they can pay summer expenses, if applicable. Students who choose to attend Barton must do so with the intention of paying all expenses from their own financial resources.
- Each student desiring transfer from another educational institution in the United States will be evaluated on a case-by-case basis by Barton's International Admissions Office.
- Barton's International Admissions Office will review all international applications for acceptance each semester.

ENROLLMENT PROCEDURE: BARTON COUNTY CAMPUS

A student is either classified as either a Regular Student or as a Special Student. To determine student status see Admissions Policy, visit bartonccc.edu/admissions, or contact the Barton Admissions Office at 792-9286 or (800) 722-6842.

*To determine if student is eligible to receive Federal Financial Aid visit: financialaid.bartonccc.edu or call the Barton Financial Aid Office at 792-9270 or (866) 257-2574.

Regular students

A student admitted as a regular student must request official transcripts (secondary, post-secondary, and/or GED) from all previously attended institutions to be sent directly to Barton. A regular student will be assigned an advisor, may be eligible to receive federal financial aid, will be eligible to earn a certificate or degree, and may be eligible to compete in intercollegiate athletics.

New Students:

Contact the Admissions Office in the Kirkman Student Activity Center at 792-9286 or (800) 722-6842. All new students may be required to submit placement scores, college transcripts, or be assessed prior to enrollment. Scores and/or college transcripts are used for placement in English, Reading, and Math courses. Barton's assessment is free of charge. *For further information, see Academic Placement.

Returning Students:

1. Schedule an appointment with your academic advisor
2. Enroll with your academic advisor

3. Make payment arrangements and receive a copy of your schedule from the Business Office in the Kirkman Student Activity Center. For more information contact the Business Office at 792-9321.

Special Students

A student admitted as a special student is not required to submit transcripts. A special student is not eligible to receive federal financial aid, is not eligible to earn a certificate or degree from Barton, is not eligible to compete in intercollegiate athletics, and will not be assigned an advisor. However, student services will be available upon the student's request.

*Students may be required to submit placement scores, college transcripts, or be assessed prior to enrollment. Scores and/or college transcripts are used for placement in English, Reading, and Math courses. Barton's assessment is free of charge. For further information, see Academic Placement.

Barton County Campus:

Complete enrollment form at Enrollment Services in the Kirkman Student Activity Center.

By Phone: Call Enrollment Services at 792-9252.

Off Campus Classes:

1. Enroll by coming to Enrollment Services in the Kirkman Student Activity Center or by phoning Enrollment Services at 792-9252.
- or
2. Contact Karly Little at 792-9294 for on-site enrollment information.

ONLINE LEARNING

Barton Community College offers students two online learning options: BARTonline (bartonline.org) and Edukan (edukan.org). Students are encouraged to visit and follow the application/registration procedures for each respective online learning platform.

Other regulations

For summer school, students may not register for more than nine credit hours per session without approval from the Vice President of Instruction and Student Services.

ENROLLMENT PROCEDURE: BARTON FORT RILEY CAMPUS

College Program classes are open to everyone.

Students can enroll in classes up to 8 weeks prior to the start of classes by visiting the Barton-Fort Riley office located at Building 217 Custer Ave, Fort Riley. Students will enroll in courses by using the Genius portal on the BARTonline.org website. Active duty military must submit tuition assistance (TA) requests through GoArmyEd.

College Program courses are available during evening and weekend hours. Sessions are eight (8) week hybrid courses. Hybrid 3-credit hour courses meet once per week for 3 hours and 5 credit hour courses meet twice per week for 3 hours. Payment for the courses can be completed online or in the Barton office.

Books are provided for most of the classes at no cost to the student.

LSEC (Leadership Skills Enhancement Courses) are open to Active duty military, Veterans, National Guard/Reserve, DOD employees, retirees, and their family members.

New students are encouraged to enroll in LSEC classes through the Barton Office and the Army Education Center at Building 217 Custer Ave, Fort Riley. Returning students can enroll online using the BARTOnline.org and GOARMYED.com websites.

Enrollment in LSEC courses begin at least 4 weeks prior to the start of classes. LSEC courses are only offered during on-duty hours. Books are provided at no cost to the student, and tuition is fully covered by scholarship. Cycles are six (6) weeks in length. Courses are traditional type courses that meet every day for 1½ hours.

BSEP (Basic Skills Enhancement Program) courses are open to Active duty military, and if space is available, family members of active duty, veterans, DOD employees, and retirees

These are developmental classes designed to enhance basic math, reading, and writing skills for the GT and Armed Forces Classification Test (AFCT) testing. These developmental classes also help prepare for college level study. Whether you need to build your basic skills or just gain confidence in them again, these courses are designed to help you succeed. These courses do earn college credit but do not count toward graduation requirements.

Active Duty Military must enroll in BSEP classes with the Army Education Center. Family members, Veterans, DOD employees, and retirees may enroll in BSEP classes based on space availability with the Education Center located at 217 Custer Avenue.

Enrollment in BSEP classes begins 8 weeks prior to the start of classes. Classes meet Monday thru Friday for 3-4 weeks, 3 hours each class meeting.

TESTING AND PLACEMENT

Students at both the Great Bend campus and the Fort Riley campus entering college for the first time without ACT, SAT, ASSET, Accuplacer, or COMPASS scores must take the Accuplacer test.

Students must have placement scores on file if they are pursuing a certificate or associate's degree or are enrolling in a general education class requiring specific assessment scores. Placement scores will be used to place students in the appropriate English, reading or math course.

Testing provides both the student and the advisor an effective tool to position the student for academic success. Through enrollment in proper courses, students are more likely to meet their academic goals.

Other Testing Services

For information about other testing services, please see the Student Services section of the catalog on page 24.

RESIDENCY STATEMENT

All applicants must indicate your residency status on the application.

For the purpose of being assessed college tuition, Kansas residents are persons, who, if adults, have resided, or if minors (under 18) whose parents have resided in Kansas for six months immediately preceding the first day of classes.

In some cases, residency status is subject to interpretation by Barton. Such persons as financially independent students whose parents reside in another state, non-residents who marry residents, military personnel and their dependents stationed in Kansas, and students acquiring an abode, whether by purchase, renting or otherwise and intending to live in it permanently or indefinitely, should consult the Office of Enrollment Services if in doubt about their residency status.

It is the student's responsibility to enroll under the proper residency classification. If there is any question concerning residency status, it is the student's responsibility to raise the question in the Enrollment Services before the start of the semester.

Certain undocumented immigrants and others may be eligible for resident tuition. This applies to any student who:

1. Has attended an accredited Kansas high school for three or more years and
2. either graduated from an accredited Kansas high school or has earned a GED issued in Kansas and
3. a.) in the case of a person without lawful immigration status; has signed and filed an affidavit with the institution stating that the person or the person's parents have filed an application to legalize such person's immigration status, or will file such an application as soon as such person is eligible to do so or
b.) in the case of a person with a legal nonpermanent immigration status, has filed with the postsecondary education institution an affidavit stating that such person has filed an

GETTING STARTED

application to begin the process for U.S. citizenship or will file such application as soon as such person is eligible to do so.

Students who meet eligibility requirements should request an affidavit from the Admissions Office or the Office of Enrollment Services.

Tuition & Fee Waiver for Deceased Safety Officer Dependents

Effective July 1, 1996, individuals who were dependents of any Kansas firefighter or law enforcement officer who died as a result of injuries suffered in the line of duty will be allowed to enroll without charge of tuition or mandatory fees at any public institution of postsecondary education in the State of Kansas. (Kansas Senate Bill 325)

Waiver Guidelines

- Dependents include birth child, adopted child, stepchild or any child who was actually dependent in whole or in part of a public safety officer and those who are related to the public safety officer by marriage.
- The statute is not retroactive and will not provide a vehicle for recovery of tuition and fees paid prior to July 1, 1996. However, the death of the law enforcement officer/fire fighter could have occurred prior to July 1, 1996.
- The fees which are waived are those fees which all students must pay at the time of enrollment.
- If you qualify, you must complete a form before the waiver is accepted. Forms may be obtained or additional questions answered by the Business Manager, Kirkman Visitor Center, located on the Barton County Campus, 792-9319.

Tuition & Fee Waiver for Dependents of Veterans

K.S.A. 75-4364 provides an opportunity for dependents and spouses of certain military personnel who died on or after September 11, 2001, while, and as a result of, serving in active military service to enroll in Kansas postsecondary educational institutions without payment of tuition or fees. Enrollment without payment of tuition and fees means that an eligible student will be allowed to enroll without payment of tuition or any mandatory fees required of all students at the time of enrollment. The student will be responsible for other charges associated with the student's academic program and living costs.

FINANCIAL AID

financialaid.bartonccc.edu

The Financial Aid Office, functioning in a manner that is consistent with the College mission statement, promotes scholarship, grant, student loan and employment opportunities for qualified, deserving students. The fundamental purpose of the Financial Aid Office is to actualize this philosophy through counseling and facilitation of the financial aid process.

Merit-based Aid

You must be a Kansas High School graduate (or a Kansas resident with a GED) to be eligible for the Barton Bound Scholarship. The award is based upon your high school GPA or ACT score, whichever is higher. To be awarded a scholarship, you must complete and submit a Barton Admissions & Scholarship Application by May 1 for the fall semester and December 1 for the spring semester for the 2014-15 aid year. The Barton Bound will be for a flat amount except for the Elite tier which will be tuition & books and awarded based upon a combination of a 3.7 or higher GPA plus an ACT score of 28 or above. As with all other Barton tuition scholarships, for online classes the tuition amount covered is equal to the same amount as that for face to face classes.

Award	Award Amount	Kansas HS GPA	ACT Score
Elite Award	Tuition & Books	3.7 and Above	and 28+
Excellence Award	\$1,000	3.5 and Above	or 26+
Honor Award	\$800	3.0 - 3.49	or 24 - 25
Achievement Award	\$500	2.5 - 2.99	or 22 - 23
Merit Award	\$250	2.0 - 2.49	or 20 - 21

Other Institutional Scholarships

Activity Scholarships

Activity Scholarships are offered by sponsors from various Barton programs. Selection is made for special skills, abilities or interests. The student is expected to complete specified obligations. The sponsor administering the award determines the contract obligations and award amounts. Activity Scholarships available: Cheer, Drama, Forensics, Graphic Design, HALO, Journalism, Student Senate, Band, Vocal Music, and Admissions.

Departmental Scholarships

Departmental Scholarships are offered by various programs at the discretion of instructors. Departments offering scholarships include: Agriculture, Art, Automotive, Business, Criminal Justice, Early Childhood, EMS, Medical Assistant, MLT, Music and Networking.

Foundation Scholarships

As part of its mission, the Barton Community College Foundation provides and funds a large number of scholarships to traditional or non-traditional students attending Barton for educational opportunities or training. Thanks to the generosity of many donors, endowments and annually funded scholarships, with a wide variety of criteria, are available to assist students. Scholarship application priority deadline is June 1st prior to the academic year. The application can be found at bartonccfoundation.org.

Trooper Bill Scholarship

An automatic (no application required) scholarship available to military dependents taking College Programs who are:

Kansas residents, seeking a degree or certificate at Barton and have at least a 3.5 or higher overall GPA. The scholarship is worth \$100 per term (\$300 annually) and is credited directly to the student's account at one of the term payout dates.

Need-based Aid

Federal Financial Aid

To apply for Federal financial aid, a Free Application for Federal Student Aid (FAFSA) must be completed. Students can complete a FAFSA online at www.fafsa.ed.gov. There is no charge to have an application processed. If financial aid is applied for in one school year, the student may be sent a renewal application the next year. All Barton degree programs are eligible for federal aid, but not all certificate programs are eligible. Students will need to contact the Financial Aid Office to inquire if a particular certificate program is eligible.

Federal Pell Grants (PELL) are funded by the federal government and do not need to be repaid. This program is designed for undergraduates who do not have a bachelor's degree, and it serves as the foundation, or base, for other forms of aid. Eligibility is based on need. The amount of the Pell Grant is determined by a federal funding formula, number of credit hours and weeks for which the student is enrolled. The maximum award for the 2016-17 year is \$5,815.

Federal Supplemental Educational Opportunity Grants (FSEOG) are basic funded by the federal government and do not need to be repaid. Eligibility is based on need and availability of funds. FSEOG funds are campus-based; and therefore, limited funds are available. Institutions participating in the FSEOG program are responsible for formulating a policy regarding distribution of FSEOG. Barton awards FSEOG in amounts of \$200 per term during the fall and spring terms to those applicants showing the greatest need as long as funds are available.

Federal Work Study (FWS) provides employment opportunities that enable students to earn money to fund their education. Also campus-based, FWS awards are based on documented need and availability of funds. For additional information, contact the Career Center at 792-9349.

Federal Direct Student Loans are low interest loans that are either subsidized or unsubsidized. A subsidized loan is based on financial need unmet by other aid. The federal government pays interest or ("subsidizes") the loan as long as the student is enrolled in at least six credit hours. On an unsubsidized loan the student will be charged interest from the time the loan is disbursed until it is paid in full.

Other Need-Based Aid: There are also two other types of scholarships for students who show need according to

guidelines listed on the scholarship application and who are not eligible to receive other types of aid.

Barton Boost Scholarship: This scholarship is need-based for high school student not receiving any other type of aid. Based upon the number of credit hours the student is enrolled in, the student may receive a scholarship up to and including six credit hours of the cost of tuition and fees per term. The scholarship in combination with other resources cannot exceed direct cost of the classes.

Barton Fresh Start Scholarship: Available to transfer students or students who graduated prior to 2015.

Award	Enrollment Level	Award Amount	Kansas HS GPA
Barton Fresh Start	Full Time (12+ Hours)	\$1,000	3.0 and Above
Barton Fresh Start	3/4 Time (9-11 Hours)	\$750	3.0 and Above
Barton Fresh Start	1/2 Time (6-8 Hours)	\$500	3.0 and Above
Barton Fresh Start	<1/2 Time (1-5 Hours)	\$250	3.0 and Above

If you have any questions or concerns about financial aid at Barton please refer to our website or if you do not have access to a computer call us at 792-9270 or (800) 748-7594.

Return to Title IV Refunds

Students who withdraw 100% from classes, officially or unofficially, may be subject to repaying a portion of their federal aid. Federal funds that may be effected by a withdrawal are the Federal Pell grant, Federal student loans, Federal SEOG, and the Federal ACG grant. When a student withdraws, Barton must determine the actual amount of federal aid the student earned while attending. If the student drops all classes before 60% of completion, federal aid will be subject to a return to the Department of Ed. If classes are dropped after completing 60%, the aid is considered earned and will not be subject to recalculation or repayment to the Department of Education.

The Department of Education provides a formula for schools to determine the actual amount of federal aid that students might be required to repay. The order of the R2T4 (Return to Title IV) funds is Federal Unsubsidized Stafford Loan, Federal Subsidized Stafford Loan, Federal PLUS Loan, Federal Pell Grant, and Federal Supplemental Educational Opportunity Grant.

If the student withdraws before federal has been paid, the student might be eligible for a post withdrawal disbursement. If that is the case, Financial Aid Office will be notified of the withdrawal and will determine if the student is subject to a PWD (Post Withdrawal Disbursement).

During the first two weeks of the fall and spring semesters, the student may drop classes and a 100% refund will be issued. After this point, when a class is dropped, no refund will be

GETTING STARTED

issued. It is the student's responsibility to officially withdraw from classes. Students may initiate a drop by contacting their advisor or the Enrollment Services Office at 792-9252. **Non-attendance does not constitute an official drop.**

If the student withdraws from classes and it is determined that a refund of federal funds is owed, Barton will contact the student informing them if they owe a repayment. The student will be responsible to repay any funds that are determined to be unearned if you owe a repayment to the Department of Education. Owing a repayment may cause the student to be ineligible for further federal aid.

For financial aid disbursement policies, visit the Barton Financial Aid web site.

STUDENT HOUSING

housing.bartonccc.edu

Barton Community College offers on-campus housing for 340 students with single occupancy options in a comfortable and fun setting for both men and women. Living on campus can enhance your opportunity to meet other students and adapt to college life more easily and quickly.

Conveniences include free: cable, internet availability in each room, access to newly released movies updated monthly, three laundromats, phone service, two Eco-friendly drinking water stations, large flat screen TV & Wii in the commons areas and access to indoor pool and workout facility.

The application process is simple and based on a **first come first serve basis upon receipt of the reservation/damage deposit.** Go online at housing.bartonccc.edu to view the student housing options and complete contract online. The housing brochure which includes additional information is available online as well as in the Admissions Office located in the Kirkman Visitors Center. Barton mandates that all full-time freshman students (those enrolled in 12 or more semester hours with a total of less than 24 successfully passed college credits) are required to live in college residence halls. You may be exempt from being required to live in the college residence halls if you meet at least one of the following criteria:

- Are married
- Are 21 years of age or older, or
- Have children or child who reside(s) with you
- Live in Barton County, or bordering county with parents, legal guardian, or other immediate family member.

Meningitis Health Information Facts

Students residing in campus housing are required to review information provided on meningitis and the possible dangers related to the disease.

They are encouraged to receive the vaccine. Students must provide either documentation of the vaccine or sign the provided waiver indicating declining of vaccine at this time. Students under 18 years of age must have parent or guardian sign the waiver.

A booster vaccine is recommended if student was vaccinated prior to the age of 16. Check with your medical provider. This vaccine should not be confused with HIB that is given to young children.

Recent studies suggest younger students who live in dorms, those who smoke, and those who spend more than four hours a week in congested areas are at greater risk for developing this disease. It is rare but severe and frequently fatal.



2016 - 2017 Cost Information

Legal Residence in Kansas - \$104 per credit hour		
	Semester (16 credit hours)	Yearly (32 credit hours)
Tuition	\$1664	\$3328
Books (estimated)	\$415	\$830
Total	\$2079	\$4158

Legal Residence outside Kansas (within the USA) - \$135 per credit hour		
	Semester (16 credit hours)	Yearly (32 credit hours)
Tuition	\$2160	\$4320
Books (estimated)	\$415	\$830
Total	\$2575	\$5150

International Residents - \$187 per credit hour		
	Semester (16 credit hours)	Yearly (32 credit hours)
Tuition	\$2992	\$5984
Books (estimated)	\$415	\$830
Total	\$3407	\$6814

Additional Fee \$150 – One time administrative fee

Housing Costs - Housing contract includes 19 meals per week plan				
Summer 2016		Fall '16 and Spring '17 Semesters	Semester Cost	Annual Cost
Application Fee	\$120	19 Meals per week		
Cost	Start at \$347 per session with no meal plan	Twin Suite, Shared Bath	\$2,812	\$5,624
NOTES:		Single Suite, Shared Bath	\$3,283	\$6,566
■ Application Fee is non-refundable.		Application Fee	\$120	Required to reserve space. Housing reserved on a first-come first-serve basis.
■ No meals are included with the summer housing price.		Single Room Rate	Additional charge for single occupancy or deluxe suite upon availability.	
■ Students who choose to pay the entire semester at the time the first payment is due will receive a 4% discount.				

Yearly Cost Estimates

*Based on 16 credit hours per semester X 2 semesters

	Kansas Resident	Non-KS Resident (U.S Citizen)	International Resident
Tuition	\$3328	\$4320	\$5984
Books	\$830	\$830	\$830
Housing**	\$5624	\$5624	\$5624
Total Cost (**Estimated)	\$9,782	\$10,774	\$12,438

Additional Notes: Housing Students add \$120 Application Fee
International Students add \$150 Administrative Fee

*A scholarship of \$7 per credit hour applies to Barton County residents

** Housing cost is based on the double occupancy room rate.

*** Cost is estimated based on basic charges and do not include other personal costs or costs associated with various classes nor cost of online courses.

Online Costs

BARTonline: \$150

EduKan: \$150

For more information of an estimated cost of attendance, visit the Barton Financial Aid web site.
Prices are subject to change at the discretion of the Board of Trustees.

STUDENT SERVICES

ACTIVITIES

Student activity programming supplements instructional programming by providing experiences designed to increase students' enjoyment of life and stimulate their personal growth and social development. Student interest organizations, clubs and activities have been created to provide these opportunities and experiences. Each club or organization has one to two faculty or staff sponsors who are directly responsible to and for their respective groups. The Director of Student Life oversees these activities and clubs.

Student Government Association – The SGA is the representative body of the student population. It is comprised of elected student officials who provide a “voice” for the student body relevant to their campus experience, and who plan student activities. Elections are held for sophomores in the spring semester and for freshmen in the fall semester. Contact the Director of Student Life at 792-9271 or engled@bartonccc.edu for more information.

Intercom - a monthly source of information about student activities taking place on campus and other need to know information. It is sent via email to students' college (bartoncougars.org) email address and available on the web under Student Life. Contact the Director of Student Life at 792-9271 or engled@bartonccc.edu for more information.

ADVISEMENT

Barton's advisement system is a student-centered, advisor driven system designed to increase student success and retention by promoting close and continuous contact between students, advisors, and the Barton student support structure. Advisors are accessible to all advisees and exhibit an open-door policy.

An Advisement Coordinator will assign an advisor to all degree seeking students. Non degree seeking students may request an advisor or may contact an

Advisement Coordinator when help is needed.

Advisors can help with many things. Here are a few:

- Degree Planning
- Career Options
- Enrollment
- Dropping/Adding a class
- Changing majors and/or advisors
- Graduation requirements
- Advice on courses, schools, and life issues

Academic advisors will provide a friendly, open environment that will foster self-exploration, self-awareness and self-evaluation thus enhancing a sense of personal identity. Additionally, advisors assist students in exploring the possible short and long-range consequences of their choices and facilitate students' recognition and acceptance of personal responsibility for what happens in their lives. Advisors will assist their advisees, not only with semester-by-semester planning, but with college career, workforce, and/or transfer plans as well.

Barton County Campus Advisement Center

Room L134, North end of the Learning Resource Center
792-9225 or (800) 748-7594, ext. 225
advisement@bartonccc.edu

Barton Fort Riley Advisement Services

Building 217, Fort Riley Campus
(785) 784-6606 or (877) 620-6606
advisement@bartonccc.edu

TESTING AND PLACEMENT

Students entering college for the first time without SAT, ACT, Accuplacer, ASSET or Compass test scores may be assessed for placement. Students at both the Great Bend campus and the Fort Riley campus entering college for the first time without ACT, SAT, ASSET, Accuplacer, or COMPASS scores must take the Accuplacer test. Students enrolling in a 100% online English, math or science course with BARTonline may

complete an institutionally developed online placement test.

Students must have placement scores on file if they are pursuing a certificate or associate's degree or are enrolling in a general education class requiring specific assessment scores. Placement scores will be used to place students in the appropriate English, reading or math course.

Testing provides both the student and the advisor an effective tool to position the student for academic success. Through enrollment in proper courses, students are more likely to meet their academic goals.

Other Testing Services

Instructor Assigned Testing: Student Services may conduct other assessments or testing as required by individual instructors or departments.

Proctoring: Individual instructors can arrange to have make-up tests proctored.

The following nationally-normed instruments can be administered:

DANTES - CLEP & DSST: Testing instruments provided by Barton Fort Riley Testing Center which allows the student to receive credit for informal learning by “testing out” of entry-level and upper-level courses. Military soldiers are able to take the test at no cost, fees apply to all other students.

The CLEP test is also offered at the Barton County Campus.

Tests Administered Through Other Testing Agencies

Automotive Service Excellence Exam (ASE)

Please contact the Barton County Campus Testing Center at 792-9344 or 792-9282 or the Fort Riley Testing Center at (785) 240-3617 to make an appointment or further information.

BOOKSTORE

The Bookstore, located in the Student Union on the Barton County Campus, offers Barton apparel and memorabilia, snacks, sandwiches, muffins, and drinks in addition to all the books and supplies needed for classes on the Barton County Campus.

Regular hours are 7:30 a.m. to 6 p.m. Monday through Thursday and 7:30 a.m. to 5:30 p.m. on Friday. Summer hours are 7 a.m. to 5:30 p.m., Monday through Thursday. Contact the Bookstore at 792-9229.

CAREER CENTER

careercenter.bartonccc.edu

Career Exploration

Barton's Career Counselor is available to assist you with choosing a career that fits a student's personality and interests. Assessments of abilities, values and interests are available to assist in choosing a major. Further career exploration resources are available through the Career Center such as books, videos, job shadowing, and assistance with online resources.

Internships/Job Shadow

An internship or job shadowing experience may be arranged through the Career Center. Internships are work experiences that enhance learning and help to verify career choice or encourage exploration of further options. Internships are often unpaid work and may or may not be for college credit.

Job Search Assistance and Part Time Employment

Resources and personal assistance are available in the following areas: resume and cover letter writing, completing job applications, developing interview skills, professional etiquette and job search assistance. Current opportunities are posted on our website for on and off campus employment at careercenter.bartonccc.edu

Transfer Information

Catalogs and brochures from public and private colleges in the state of Kansas are available outside of the Career Center Office. Information about transfer equivalency of Barton courses to other institutions is also available. Information from colleges outside of Kansas will be obtained at your request. Many Kansas colleges send admissions representatives to Barton to speak with our students. Check the Career Center website for specific dates and times.

Call 792-9349, or come to the office in room L133, located on the north end of the Learning Resources Center.

CHILD DEVELOPMENT CENTER

cdc.bartonccc.edu

Students, faculty, and staff with children between the ages of 2 weeks and 12 years have access to the Child Development Center located at the Barton County Campus on a space-available basis. The Center is open from 7 a.m. to 6 p.m. whenever College offices are open. The Center remains open for child care services on Fridays in summer when the Barton County campus offices observe a summer schedule. Located adjacent to the three-story Phase IV Housing Complex, the Center provides care for as short a time as one hour and as long as eleven hours each day. The Center is licensed by the State of Kansas to provide care for up to 66 children during each academic semester. The Director of the Child Development Center can be reached at 786-1131 or 792-9360 to provide information about Center enrollment.

COUNSELING

counseling.bartonccc.edu

Professional counseling is available on the Barton County Campus to help students with personal issues or with academic concerns that would ultimately affect the achievement of their academic goals. Counseling is also available to assist students in exploring choices, recognizing consequences,

and assuming personal responsibility. Referral services are available for career counseling on campus, as well as for community resources. You may also visit our counseling website at counseling.bartonccc.edu. For counseling services, call 792-9295 or visit L139, in the north end of the Learning Resource Center. Counseling is confidential and free for Barton students.

COMPUTER LAB

The Student Services computer lab on the Barton County campus makes available to students and others PCs, printers, and scanners. Qualified personnel are available to assist with Internet access, word-processing, and other computer assignments. On the Barton County campus, the computer lab is located in the far northwest corner of the Learning Resource Center. On the Fort Riley Campus, computer access is located in Buildings 7604 and 215 when computer classes are not in session. Additionally, the Fort Riley Tutor Center located in Building 7656 has computers available during the day for students.

DISABILITY SERVICES

Disability Services provides and coordinates academic or other accommodations to students with disabilities in order to promote equal educational opportunities. Accommodations are provided on an individualized, case by case basis. Prior to receiving accommodations, students are wholly responsible for identifying themselves as being disabled and for providing the proper documentation. Students with disabilities seeking academic accommodations are encouraged to contact the Student Services office as soon as possible at (855) 509-3367 or may contact disabilityservices@bartonccc.edu. Students attending the Fort Riley campus may contact the Fort Riley Student Support office at (785) 784-6606 or e-mail disabilityservices@bartonccc.edu to request assistance with accommodations. Fort Leavenworth students should

STUDENT SERVICES

contact (855) 509-3375 or e-mail disabilityservices@bartonccc.edu to request assistance with accommodations.

HEALTH SERVICES

healthservices.bartonccc.edu

Barton employs a registered nurse full-time from August through May. Clinic hours are Monday, Wednesday and Thursday 8 a.m. to 4 p.m.; Tuesday 8 a.m. to 5:30 p.m.; and Friday 8 a.m. to 1 p.m. After hour emergency contacts can be made by calling cell phone 786-0392. Basic services are free to all students and employees of the college.

All expenses incurred through medical, dental and eye referrals are the responsibility of the student, parent or guardian.

The mission of the College Health Program is to help maintain a state of optimum health, both physical and emotional, among the students, faculty and staff.

Services available include:

1. First aid and emergency care.
2. Routine health checks.
3. Assistance with medical, dental and eye referrals
4. Immunization information and assistance with updates
5. Prescription injections can be given with approval of prescribing physician and college nurse. Medication must be provided by the student.
6. Assistance with family planning, STD and HIV counseling
7. Medical information source

Immunization Information

Barton follows the established recommendations of the Kansas Department of Health and Education (KDHE) and the American College Health Association (ACHA).

1. Proof of immunizations is not required but it is HIGHLY recommended that all college students review and update their immunizations.
2. Informative guidelines on

immunizations are available in the Student Health Office.

3. Limited immunizations may be obtained through Student Health Services. Minimal fees are assessed. If your insurance covers immunizations, it is advised you receive them from your Healthcare provider or Health Department. The college does not process insurance claims.
4. Housing students and international students are asked to provide immunization information along with health assessment at enrollment.
5. All international students are mandated to be seen in Student Health within 24 hours of arrival on campus. Mandatory TB screening will be completed, along with a health assessment including review of immunizations. The TB screening and updates of immunizations will be required to be completed prior to attendance of classes.
6. Campus housing students will be required to show documented proof of meningitis immunization or the signed waiver.
7. As per KS Statute KSA 2009 Supp. 65-129, all students entering a classroom will be screened for tuberculosis. Those who evidence heightened risk will be required to provide the TB Risk Assessment Evaluation which must be completed by a health care professional. Students requiring a Tuberculosis Risk Assessment may inquire at Student Health for testing or go to local Health Department or Healthcare Provider. Assistance with referrals will be provided as needed.

Medical Insurance

According to the Affordable Care Act (ACA) all individuals are required to maintain Essential Coverage in Health Insurance. The college does not have a plan or endorse any particular plan.

LIBRARY

library.bartonccc.edu

Barton's Library offers a variety of resources to meet the informational and

research needs of students and area residents. Access is provided to the library's print and electronic resources including, but not limited to, books, e-books, periodicals, and databases. The library strives to adjust its resources and services to meet the needs of its patrons.

Research and general library assistance is available in person, by phone 792-9365/(888) 403-1900, or e-mail library@bartonccc.edu.

Library hours may alter with the season, campus closings, school holidays, and by demand as dictated by student use. Hours of operation and any variations will be posted on the library's website and Facebook page.

For more information, stop by the library which is located in the south end of the Learning Resource Center, call 792-9365, or visit the library's web site at library.bartonccc.edu.

CAMPUS SAFETY

At Barton the safety and well being of our students, faculty, staff and visitors are of utmost importance. With the support of other departments, we have many people involved in keeping this campus safe and secure; however, a truly safe campus can only be achieved with the cooperation of all students, faculty, staff and visitors.

The Barton Campus Safety Department provides a 24-hour a day, seven days a week patrol function on campus, parking lots, and student housing. The Campus Safety office is located in T-154 and can be reached by calling 792-9217.

TRIO PROGRAMS

Student Support Services

Student Support Services is one of four TRIO programs sponsored by Barton. TRIO programs are funded through the United States Department of Education. These grants provide free services for eligible students to assist them in meeting their educational goals. The Barton

Student Support Services (SSS) program is designed to meet student needs in all academic, career, transitional, and life skills areas. Each member of the Student Support Services staff is committed to helping students successfully complete a two-year degree and/or transfer to a four-year institution.

Services

Services available to eligible students include: academic, career, vocational, transfer, and personal counseling; financial aid information and assistance, transfer visits, disability accommodations, college skills seminars and tutoring.

Eligibility

Students may be eligible for the SSS program if they are first generation college students, meet limited income guidelines, or have a physical or learning disability. In addition, students must show a need for academic support services.

Location

The Student Support Services program offices are located in the north end of the Learning Resource Center. Staff members may be reached by calling 792-9240.

Upward Bound Programs

Upward Bound provides fundamental support to participants in their preparation for college entrance. The program provides opportunities for participants to succeed in their precollege performance and ultimately in their higher education pursuits. Upward Bound serves: high school students from low-income families; and high school students from families in which neither parent holds a bachelor's degree. The goal of Upward Bound is to increase the rate at which participants complete secondary education and enroll in and graduate from institutions of postsecondary education.

A six-week residential program is conducted on the Barton Community College campus during the summer.

Barton Community College has two Upward Bound programs serving our service area:

Barton County Upward Bound: Serves Ellinwood, Hoisington and Great Bend

Contact: 792-9219 or
bcub.bartonccc.edu

Central Kansas Upward Bound: Serves Central Plains, Chase, Ellsworth, Lyons, and Wilson

Contact: 786-1181 or
ckub.bartonccc.edu

Educational Opportunity Center

bartonccc.edu/community/CKEOC

The Central Kansas Educational Opportunity Center (CKEOC) offers free services to provide eligible adults assistance with secondary and postsecondary education attainment. CKEOC has been developed to respond to the increasing educational needs of adults and offer support in identifying their educational, personal, and career goals. The CKEOC TRIO Program is 100% funded by the Department of Education with all services free to those who qualify. CKEOC may serve those under the age of 19 due to there is not a Talent Search Project within the CKEOC target area.

Services

Services include: Career exploration, college and vocational school searches academic advisement, financial aid and admissions assistance, placement in and guidance through high school diploma or GED programs, campus visits, financial literacy, supportive workshops, job networking, and mentoring.

CKEOC Service Area

The CKEOC service area covers 33 counties with EOC Advisors available to meet with current and prospective participants within Workforce Centers. The main EOC office is located in the Great Bend KansasWorks Center and satellite offices are located in Hays, Junction City, Manhattan, Salina, and the Barton Fort Riley Office.

Contact Information:

Great Bend: 793-8164 or
toll free (877) 684-8164

Junction City: (785) 238-5200

TUTORING

Peer and professional tutoring is provided free of charge on the Barton County Campus from 8 a.m. to 9:30 pm Monday through Thursday and from 8 a.m. to 4:30 p.m. on Fridays. Evening, Sunday and summer tutoring hours vary and will be posted at the beginning of each semester. Contact the Barton County Campus Tutoring Center at 786-1127. Professional tutoring services are provided free of charge at Fort Riley in Building 7656. Tutoring is available Monday - Tuesday, 9 a.m. to 5 p.m.; Wednesday - Thursday, 9 a.m. to 7 p.m.; and Friday, 9 a.m. to 3 p.m.; Saturday, 11 a.m. to 3 p.m. Please contact the Fort Riley Tutoring Center at (785) 240-3617 or (785) 784-6606 ext. 763.

For distance or online tutoring options, please contact TutoringServices@bartonccc.edu for more information.

VETERAN SERVICES

bartonccc.edu/supportservices/ militaryresources

The College assists veterans, active duty, and family members in securing educational benefits. Information may be obtained from the nearest Veterans Administration Office or the College's Veteran Service representatives. The Barton County campus VA representative can be reached at (800) 748-7594 ext. 363, and the Fort Riley and Fort Leavenworth campus VA representative can be reached at (785) 784-6606 ext. 707.

ACADEMIC INFORMATION

ACADEMIC INTEGRITY

The College values the honest pursuit of knowledge and expects its students to conduct themselves with academic integrity. To that end, it has adopted an academic integrity policy which defines basic and capital violations and outlines the expectations, rights and responsibilities, sanctions, and related processes essential to maintain the standards of academic integrity within the College.

Upon the recommendation of the faculty, Barton Community College adopted the following values statement:*

“Academic Integrity is a commitment, even in the face of adversity, to fundamental values: honesty, trust, fairness, respect, and responsibility. From these values flow principles of behavior that enable academic communities to translate ideals into action.” Specifically, these values are defined as follows:

- An academic community of integrity advances the quest for truth and knowledge by requiring intellectual and personal honesty in learning, teaching, research, and service.
- An academic community of integrity fosters a climate of mutual trust, encourages the free exchange of ideas, and enables all to reach their highest potential.
- An academic community of integrity establishes clear standards, practices, and procedures and expects fairness in the interaction of students, faculty, and administrators.
- An academic community of integrity recognizes the participatory nature of the learning process and honors and respects a wide range of opinions and ideas.
- An academic community of integrity upholds personal responsibility and depends upon action in the face of wrongdoing.

*As stated in The Center for Academic Integrity handbook, “The Fundamental Values of Academic Integrity,” p.4. Des Plaines, Illinois.

CODE OF CONDUCT

Barton County Community College has established and maintains a fair and equitable procedure for addressing student disciplinary matters ensuring that the rights of the students, the College community, and the community-at-large are protected.

The objectives of the disciplinary process at Barton County Community College are:

1. To protect members of the campus community from harm due to the indiscretions of the few members of the community who are unable, or unwilling to respect the rights of others;
2. To help ensure order in the College community;
3. To create an environment that enhances the opportunity for learning;

4. To protect the rights of members of the College community and the community at large; and
5. To assure students due process when they have been charged with violating College rules and regulations.

Complete Code of Conduct procedure available at studentconduct.bartonccc.edu.

COLLEGE TO UNIVERSITY ARTICULATION AGREEMENTS

Barton promotes the development of partnerships with colleges and universities. One of the leading outcomes of these partnerships are articulation agreements. Agreements may benefit students interested in general transfer or students who are pursuing specific programs of study. For more information, please check out the following website: bartonccc.edu/instruction/transartic

DEVELOPMENTAL EDUCATION

Statement of Philosophy

As developmental educators at Barton Community College, we believe in maximizing the potential of our students and ourselves. We believe in the rights of all students to excellent post-secondary educational experiences: therefore, we strive to achieve and maintain excellence in all our teaching and learning endeavors. It is our mandate to help students overcome any barriers that would hinder their personal and academic success.

We create a learning environment in which faculty, staff, and administration employ the best practices in their field, promote individual initiative, honor diversity, empower independent learning, and encourage risk taking, active learning, problem-solving, and critical thinking while we model a lifelong commitment to learning.



Mission Statement

Developmental education at Barton Community College provides a post-secondary educational opportunity, sensitive and responsive to the individual differences and special needs among learners.

To facilitate academic preparedness, we support diagnostic testing and placement, develop and provide general and discipline-specific learning strategies, and assist students in coping with barriers to learning.

The developmental courses offered regularly in the course schedule include the following:

Reading	Credit Hours
Basic Reading	3
Intermediate Reading	3
English	Credit Hours
English for Speakers of Other Languages (ESOL) Lab	1
ESOL Conversational English	1
ESOL Academic Vocabulary	1
ESOL Sentence Structure	1
Intro to English Language	6
ESOL I	3
ESOL II	3
ESOL III	3
Basic English	3
Intermediate English	3
Math	Credit Hours
Basic Applied Math	3
Basic Algebra	3
College Preparatory Math	3
Student Success	3

Barton ACE

Barton Community College's ACE program helps students master needed math and reading skills in an accelerated time frame. The ACE Lab is located in the classroom building.

Advisors or the Student Support Services staff assist students with the selection of appropriate developmental courses should testing indicate that the student could benefit by enrolling in one or more of these courses.

MILITARY SERVICE SCHOOL CREDIT

Barton Community College will award college credit to veterans and military personnel enrolled at Barton who have successfully completed specialized training in a military service school. For active duty service members, a Joint Services Transcript (JST) and Enlisted Records Brief (ERB) are used to

complete the military evaluation process. The evaluation for the number of credit hours to be awarded will be based on the recommendations as set forth in "A Guide to the Evaluation Experiences in the Armed Services," published by the American Council on Education. Veterans must provide documentation that shows the correct identification of the training program by title, length, location, and course number and submit a DD214 form in addition to any certificates of training you may have.

OUTCOMES ASSESSMENT

The College is committed to the assessment of learning and to quality education. Assessment activities provide a means to develop an understanding of how students learn, what they know, and what they can do with their knowledge. Results from these various activities guide Barton, as a learning college, in finding ways to improve student learning.

