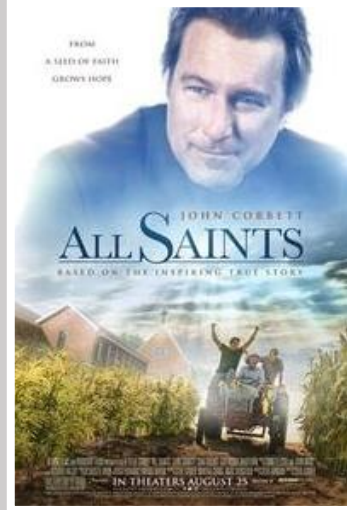




\$3 Movie Night

Thur. Sept. 7



Cash Only Golden Belt Cinema 6 – 1222 Kansas Ave
(Intersection of Kansas & Lakin St – 620.792.5769)

Barton County Campus

| | | |
|-------------------------------|----|----------------|
| KIDNAP | R | 4:55/7:25 p.m. |
| ALL SAINTS | PG | 4:45/7:15 p.m. |
| GIRLS TRIP | R | 7:00 p.m. |
| THE HITMAN'S BODYGUARD | R | 4:25/7:05 p.m. |
| ANNABELLE: CREATION | R | 4:30/7:10 P.M. |
| DESPICABLE ME 3 | PG | 5:00/7:30 p.m. |

Transportation (Van) leaves promptly at 6:15p from the Union parking lot and supports the 6:30-7:30p shows times.

***3D charge is the responsibility of the ticket holder**

TICKETS: Students only (ID/class sched. required) **\$3.00**
Barton employee tickets **\$5.00**

- Cash Only The Day of the Event!
\$3 Movie Tickets are purchased in the Student Life Office – Union or in the theater lobby between 6:30p – 7:15p from Diane only!!

Non-discrimination Notice: Barton Community College is an equal opportunity provider and employer. Visit equal.bartonccc.edu for more information.