



# May Board of Trustees Report

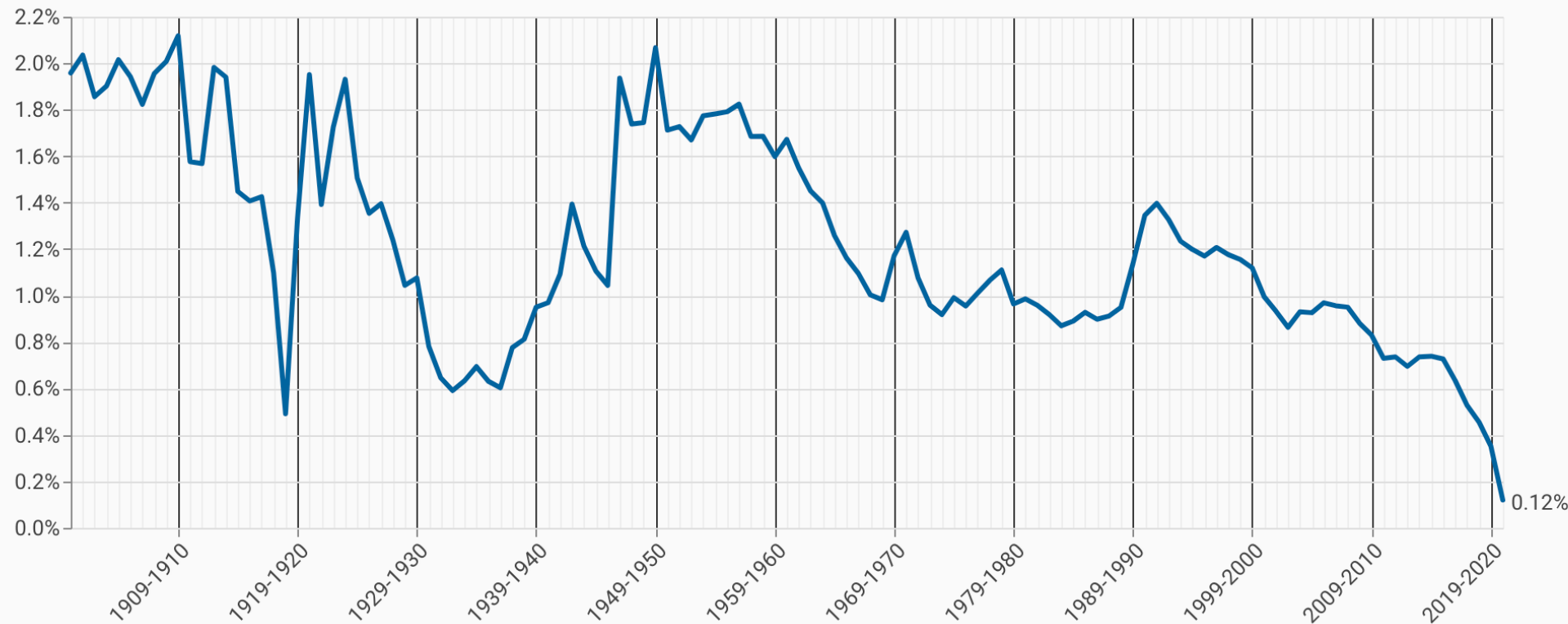
## The Upcoming Population Cliff

# The Population Cliff

# National

- U.S. population size is standing still, according to [data](#) from the U.S. Census Bureau.
- Population growth is the lowest annual growth in U.S. History.

Figure 1. US annual population growth, years 1900–01 to 2020–21



Source: William H. Frey analysis of US Census Bureau historical estimates, including 2010-2021 annual estimates, released 12/21/2021

# Population Decline

# Kansas

- **Kansas is one of thirteen states that has had a population decline in two of the last three years.** [Brookings.edu](https://www.brookings.edu)

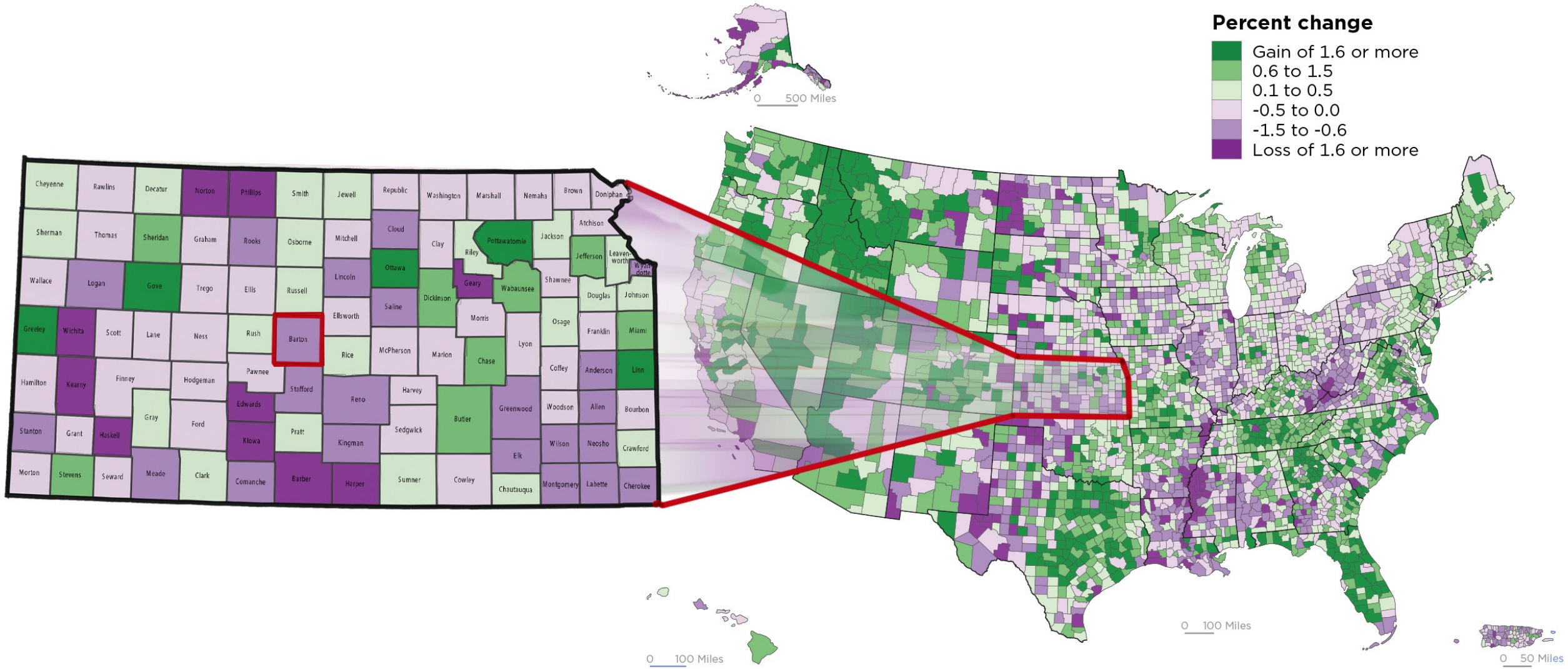
Table 1. States with population declines, 2018-19, 2019-20, 2020-21

2018-2019		2019-2020		2020-2021	
New York	-80,967	New York	-126,355	New York	-319,020
Illinois	-57,668	Illinois	-79,487	California	-261,902
West Virginia	-10,690	California	-69,532	Illinois	-113,776
Pennsylvania	-10,224	Michigan	-18,240	Massachusetts	-37,497
Connecticut	-8,539	Pennsylvania	-15,629	Louisiana	-27,156
Hawaii	-7,487	Louisiana	-12,967	Pennsylvania	-25,569
Louisiana	-6,165	Mississippi	-11,441	District of Columbia	-20,043
Mississippi	-4,652	West Virginia	-10,476	Michigan	-16,853
Alaska	-3,021	Connecticut	-9,016	New Jersey	-12,613
Michigan	-2,491	New Jersey	-8,887	Ohio	-10,570
Rhode Island	-1,180	Hawaii	-8,609	Hawaii	-10,358
Vermont	-756	Ohio	-3,290	Maryland	-7,550
New Jersey	-472	Alaska	-2,445	Mississippi	-6,905
<b>Kansas</b>	<b>-113</b>	Massachusetts	-1,309	West Virginia	-6,839
		Rhode Island	-1,033	North Dakota	-4,014
		Vermont	-699	New Mexico	-1,689
				<b>Kansas</b>	<b>-1,298</b>
				Rhode Island	-619

Source: William H. Frey analysis of US Census Bureau estimates, released December 21, 2021

# Kansas Decline

## Where Counties are Growing Percent Change in Population by County: 2020 to 2021



# The Falling Birthrate

# National

- **National Birthrate down 4% between 2019-2020**  
[Brookings.edu](https://www.brookings.edu)
- **The drop is world-wide among high-income countries according to the [The French Institute for Demographic Studies](https://www.demographic-institute.org/)**

Forecast Number of US Children Births Per Mother Cohort

Cohort	Conservative Approach	Moderate Approach	Aggressive Approach
1975-1980 "baseline"	2.20	2.20	2.20
1985	2.16	2.16	2.19
1990	1.93	1.99	2.07
1995	1.61	1.86	1.97
2000	1.44	1.77	1.92

# Falling Birthrate

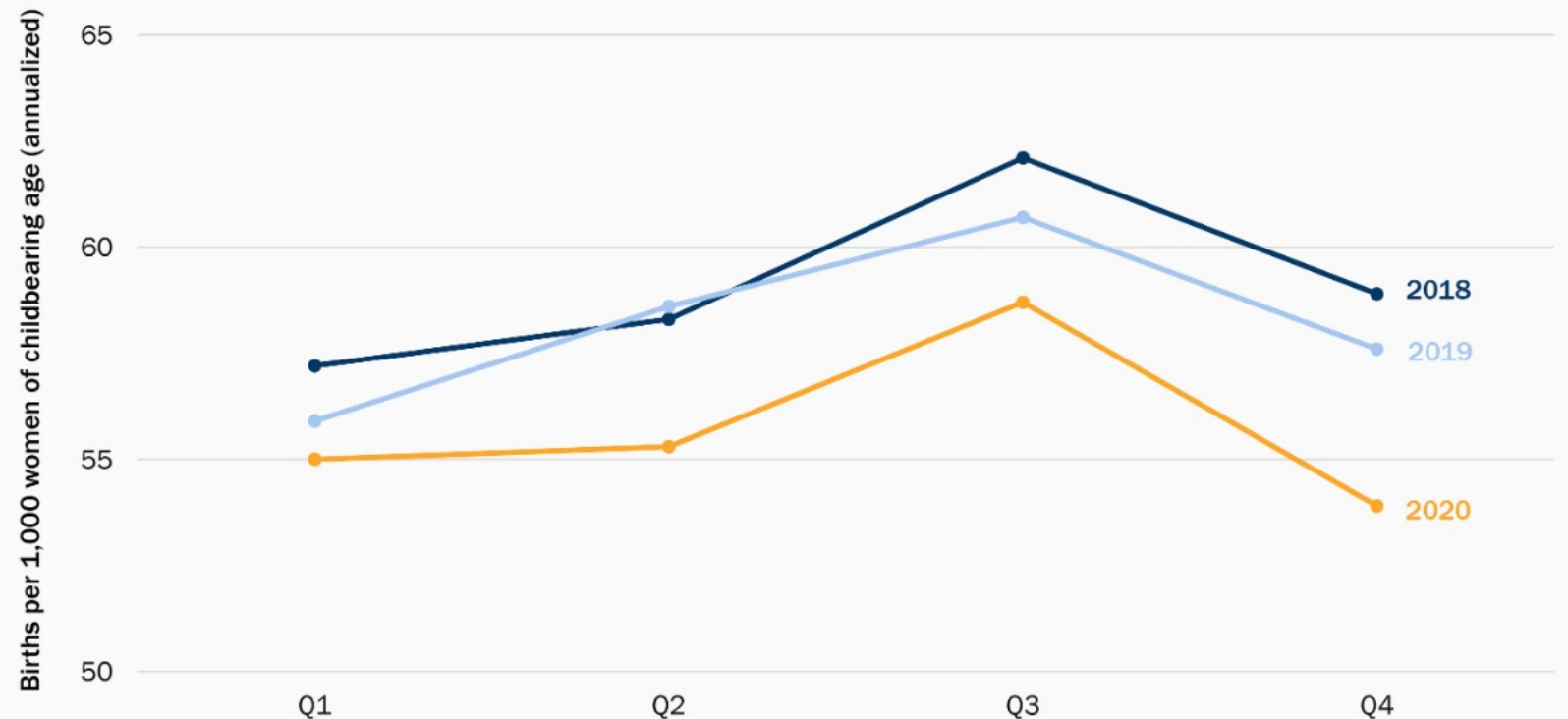
# Pandemic Effect?

- The birthrate drop was not caused by the Pandemic. However, it did have a negative effect on an already declining birthrate.

[Brookings.edu](https://www.brookings.edu)

- [US birth data for 2020](#) showed that births have been falling for more than a decade.

Figure 1. Quarterly Birth Rates, 2018–20



Source: National Center for Health Statistics, Vital Statistics Rapid Release, Natality - Quarterly Provisional Estimates (2021).

# Birthrate Decline is Diverse

Birthrate is not a local, regional, demographic, or political issue. The top five decliners are very diverse in location and economics.

## 5. California

Births, July-Dec 2019: 230,023

Births, July-Dec 2020: 212,597

Change, Between July-Dec 2019 and July-Dec 2020: -7.6%

## 4. West Virginia

Births, July-Dec 2019: 9,369

Births, July-Dec 2020: 8,649

Change, Between July-Dec 2019 and July-Dec 2020: -7.7%

## 3. Hawaii

Births, July-Dec 2019: 8,606

Births, July-Dec 2020: 7,903

Change, Between July-Dec 2019 and July-Dec 2020: -8.2%

## 2. New York

Births, July-Dec 2019: 113,748

Births, July-Dec 2020: 103,666

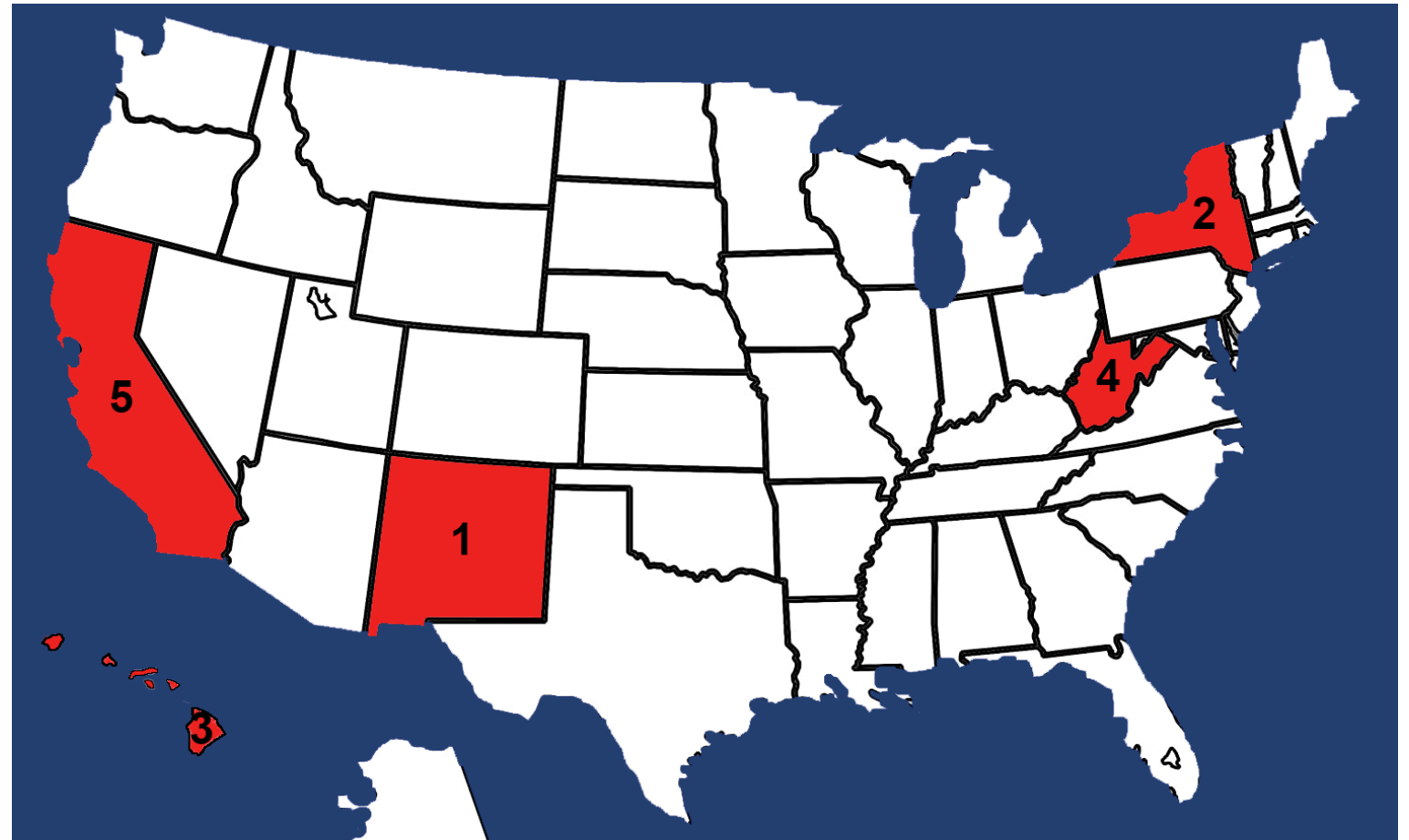
Change, Between July-Dec 2019 and July-Dec 2020: -8.9%

## 1. New Mexico

Births, July-Dec 2019: 11,912

Births, July-Dec 2020: 10,577

Change, Between July-Dec 2019 and July-Dec 2020: -11.2%



# Positives & Demographics

# Current Effects

Lower population growth increases:

1. Economic opportunities for women and minority groups.
2. Exerts upward pressures on wages, especially for unskilled labor.

[\*International Union for the Scientific Study of Population \(IUSSP\)\*](#)

Effects/Solutions at Barton:

1. Female and minority (Hispanic highlighted) enrollments have held or increased; male enrollment has dropped dramatically. [\*KBOR Databook\*](#)
2. Labor shortage and wage pressure factored in Barton salary increases.

Enrollment by Gender  
Academic Year 2016 - 2021

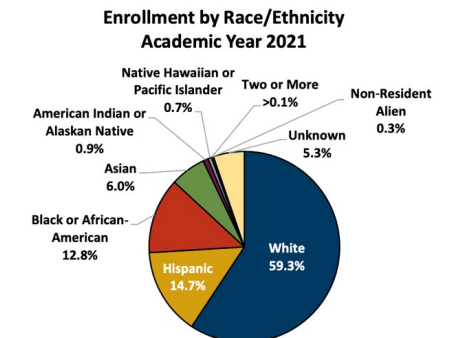
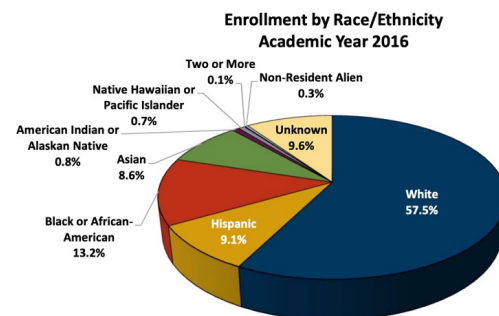
Table P.12

Gender	AY 2016	AY 2017	AY 2018	AY 2019	AY 2020	AY 2021	% Change AY 16 - 21
Female	6,021	5,660	5,592	5,881	6,094	5,823	-3.3%
Male	10,028	9,076	8,849	7,622	7,127	5,571	-44.4%
Unknown	0	0	0	0	5	8	NA
<b>Total</b>	<b>16,049</b>	<b>14,736</b>	<b>14,441</b>	<b>13,503</b>	<b>13,226</b>	<b>11,402</b>	<b>-29.0%</b>

Enrollment by Race/Ethnicity  
Academic Year 2016 - 2021

Barton Community College  
Table P.11

Race/Ethnicity	AY 2016	AY 2017	AY 2018	AY 2019	AY 2020	AY 2021	% Change AY 16 - 21
White	57.5%	57.9%	58.1%	58.2%	59.0%	59.3%	-26.7%
Hispanic	9.1%	9.2%	10.2%	11.7%	13.0%	14.7%	14.5%
Black or African-American	13.2%	12.1%	12.5%	12.6%	13.0%	12.8%	-31.0%
Asian	8.6%	9.1%	8.5%	8.4%	6.8%	6.0%	-50.3%
American Indian or Alaskan Native	0.8%	0.8%	0.8%	0.8%	0.9%	0.9%	-21.6%
Native Hawaiian or Pacific Islander	0.7%	0.7%	0.8%	0.7%	0.8%	0.7%	-32.7%
Two or More	0.1%	0.1%	0.1%	0.1%	0.0%	0.0%	-68.8%
Non-Resident Alien	0.3%	0.2%	0.8%	0.7%	0.4%	0.3%	-41.8%
Unknown	9.6%	9.9%	8.1%	6.7%	6.0%	5.3%	-61.1%



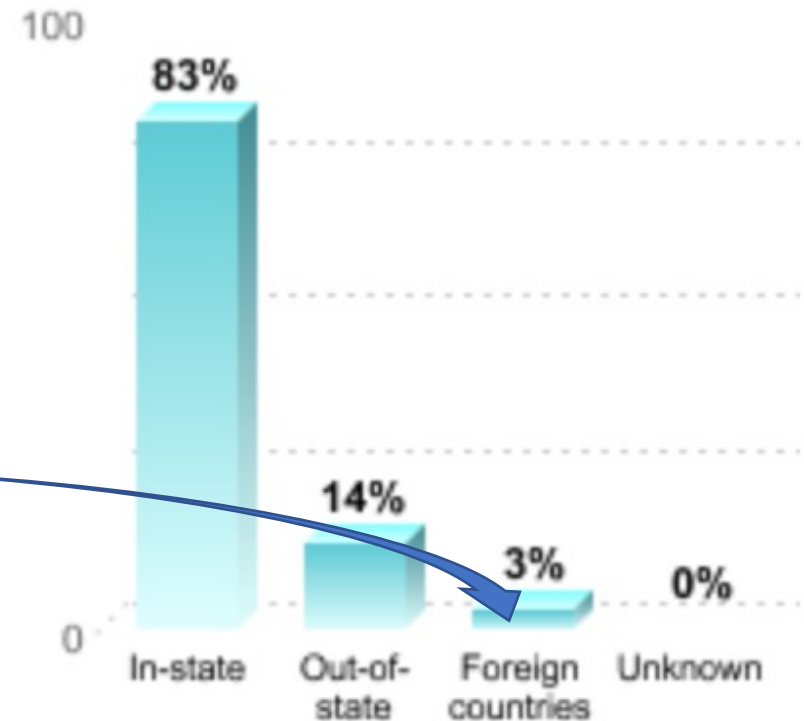


# Future Sources of Growth?

[The United Nations \(2019\)](#) projects that the populations of 55 countries or areas will decrease by 1 percent or more between 2020 and 2050. However, the population of the United States, currently at 333 million, is projected to grow by nearly 14 percent, largely through immigration, to 379 million by 2050.

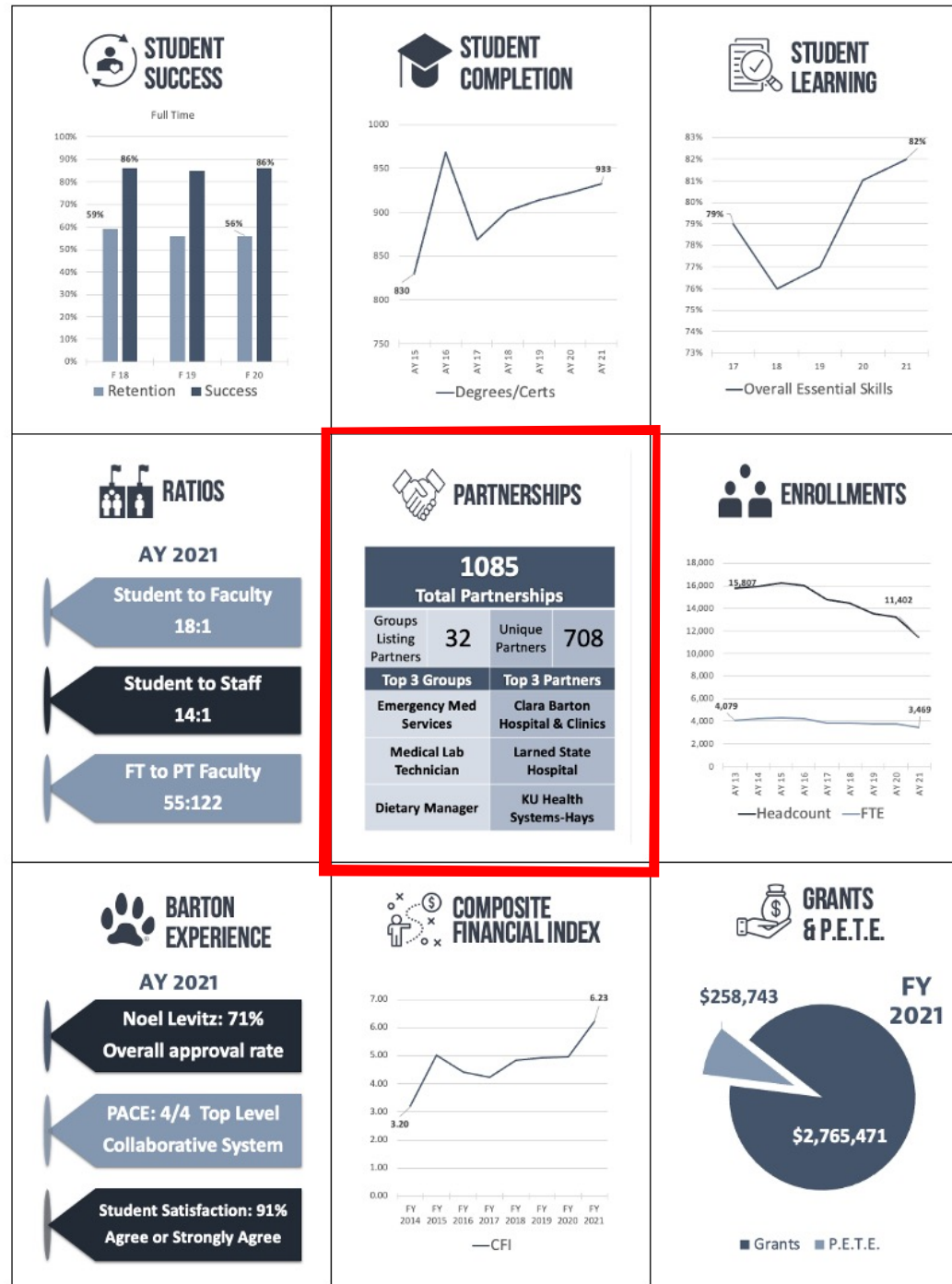
Most likely, international students will become a source for growth in addition to growth in college-attending females and minorities listed on the previous page.

## UNDERGRADUATE STUDENT RESIDENCE



# Dashboard Updates

- 36 partners added
- 8 groups added
- Partner's KPI metric visual updated
- 1085 Total  
708 Unique



## All Groups

- Adult Healthcare
- Agriculture
- Automotive
- Business
- Corrections
- Criminal Justice
- Dietary Manager
- Early Childhood
- Emergency Management / Homeland Security
- Emergency Med Services
- Hazardous Materials Management
- Medical Assisting-Coding- Transcription
- Medical Lab Technician
- Military Schools
- Natural Gas Technician
- Information Technology
- Nursing
- Occupational Safety and Health
- Pharmacy Technician
- Secondary Association
- Welding
- Athletics
- Foundation
- Gallery
- Student Services/Residence Life
- Child Development Center
- Cougar Supply Den
- Title IX
- Volunteers In Action/AmeriCorps Seniors
- SSS/Counseling
- SSS/Jumpstart
- Financial Aid



Questions or  
Comments