

Barton Community College Board Study Session

January 9, 2018

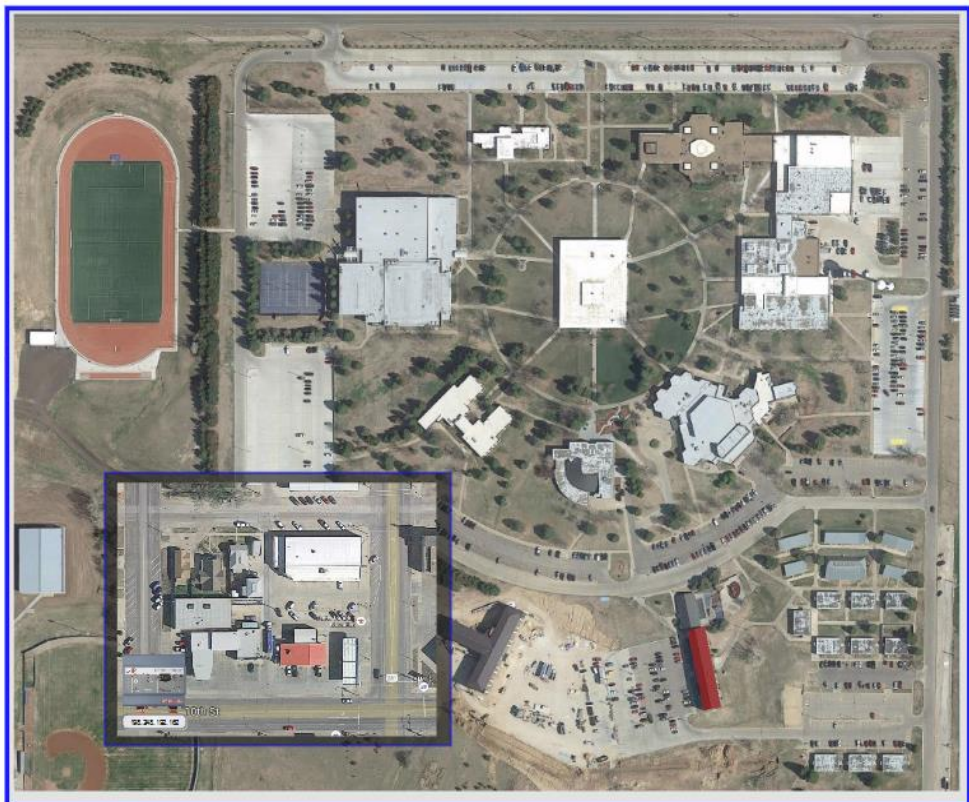
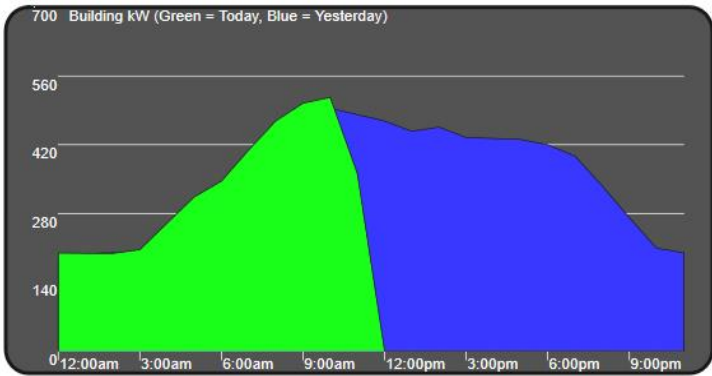
Campus Energy Management System

- System
- Barton County
- System
- Servers
- Enterprise
- Central
- Energy
- Global
- Schedu
- WebSe
- C&Cgrc
- Main Dr
- Overall
- LonWorks
- Calendar
- Digital Sch



Barton Community College

Outside Air
 Temperature 28.9 °F
 Relative Humidity 40.0 %RH



Footprint Calculations

694 Tons of CO2
139 Cars
189 Acres of Trees

Instantaneous Power Consumption
500 kW

Diff: 0.0 %

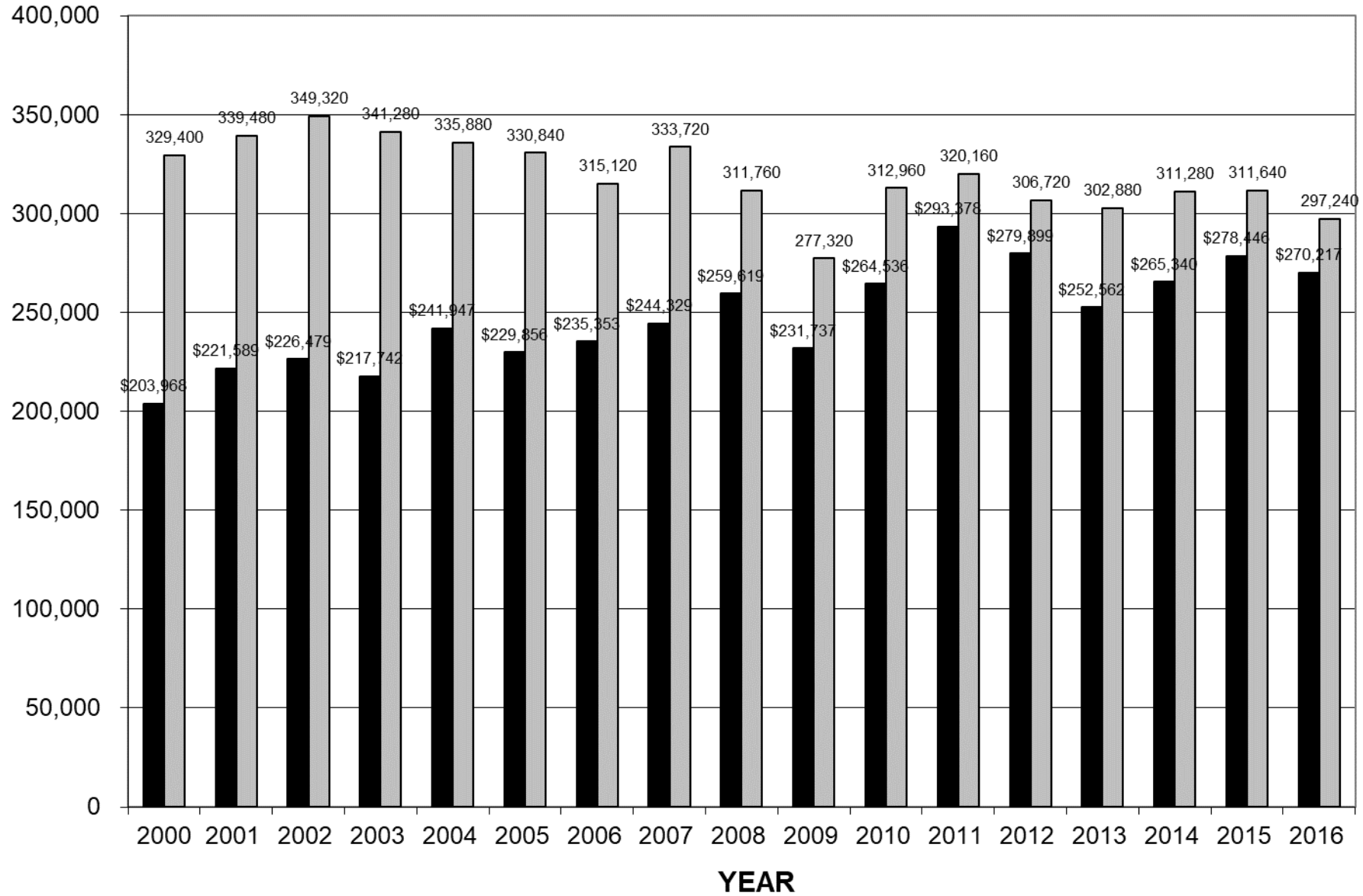
Energy Calculations
 Electricity.....28833 kB TU

Water PSI 45.2 psi WtrPsi Spt - 44.0 psi +	HW System ON	CW System OFF
Pump #1 Off	Boiler Lead Lag Sch.	Chiller Lead Lag Sch.
Pump #2 Off	On = Blr1 Lead Off = Blr2 Lead	On = T1 Lead Off = T2 Lead
Pump #3 Off		
Sprinkler Disable On		

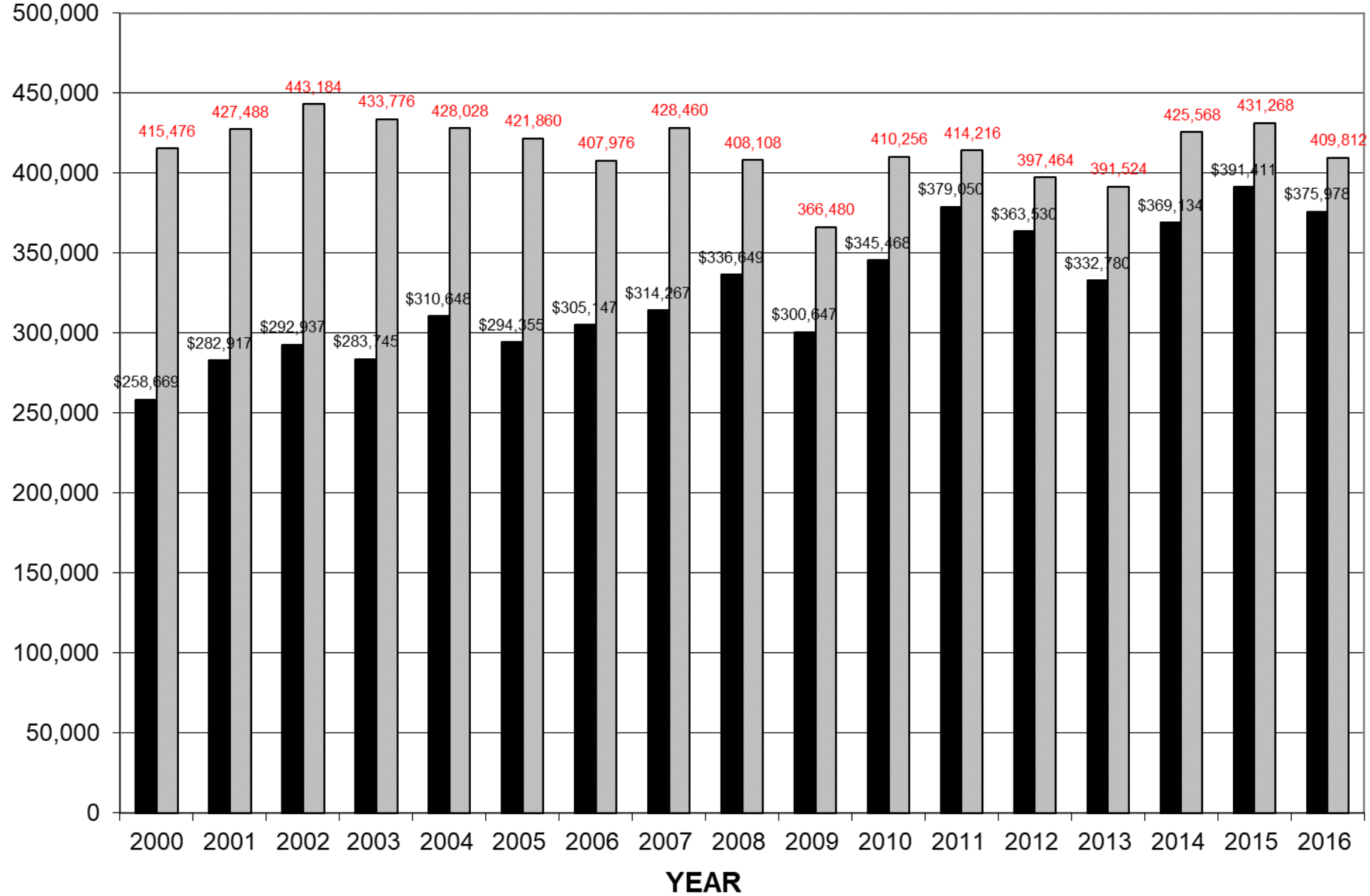
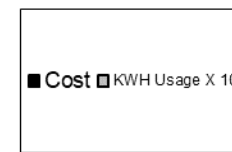
[Link to Schedules](#)

Make the most of your energySM

BCCC Main Campus Electrical Usage -vs- Cost



BARTON ELECTRICAL USAGE -VS- COST (Main Campus and Housing)



BARTON GAS USAGE -VS- COST

