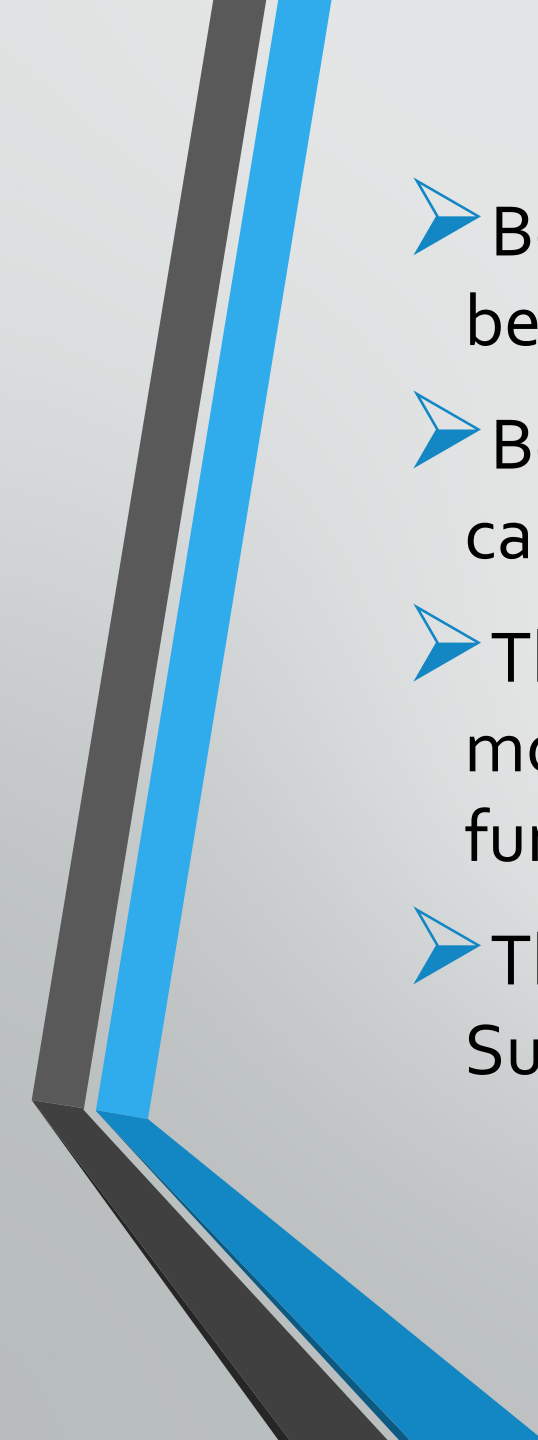


Barton Community College
Board of Trustees
Study Session

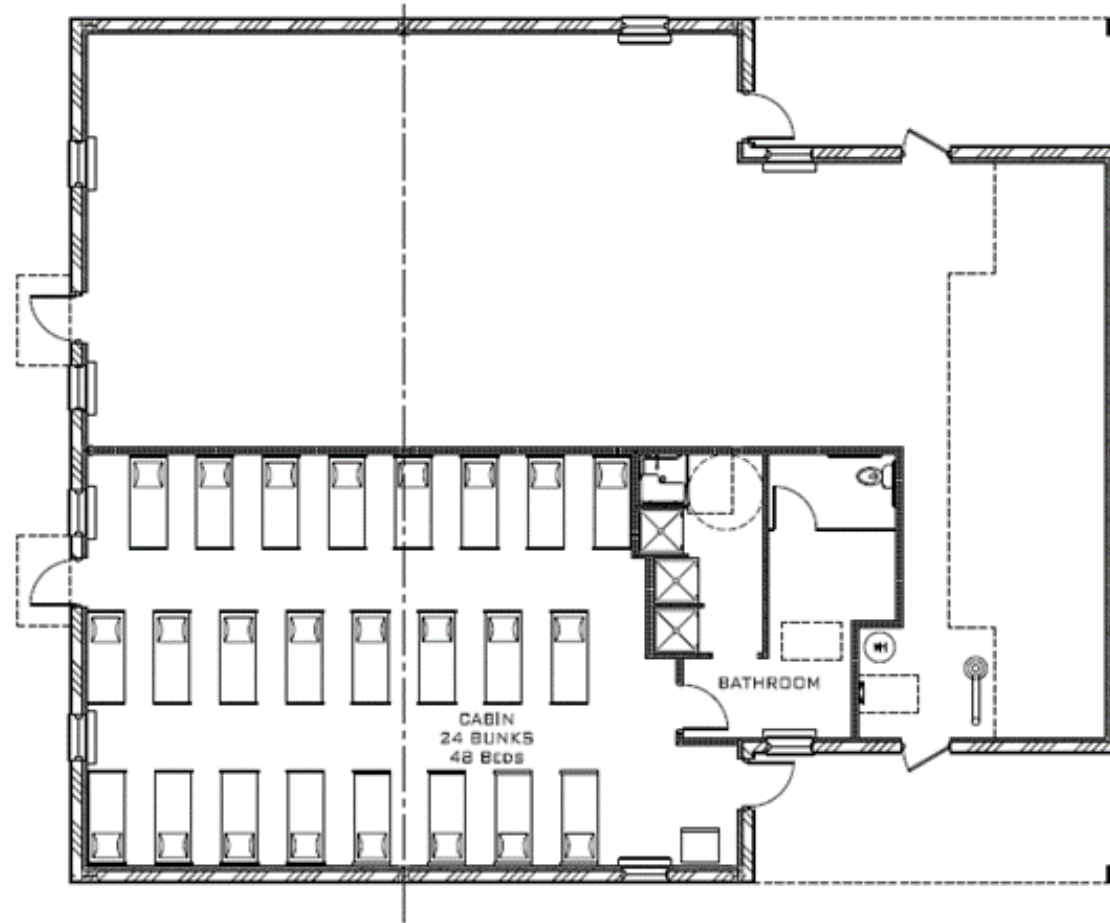
May 14, 2019

Camp Aldrich

On August 8, 2018, Trails End Cabin was destroyed by a fire. Since that time, we have been working with the insurance adjustors to determine, and agree on, a replacement value. The insurance company has agreed to pay up to \$616,000 + contents + architectural fees (Barton will have a \$25,000 deductible). The stipulation would be that the facility must include all required code upgrades (Fire, ADA).

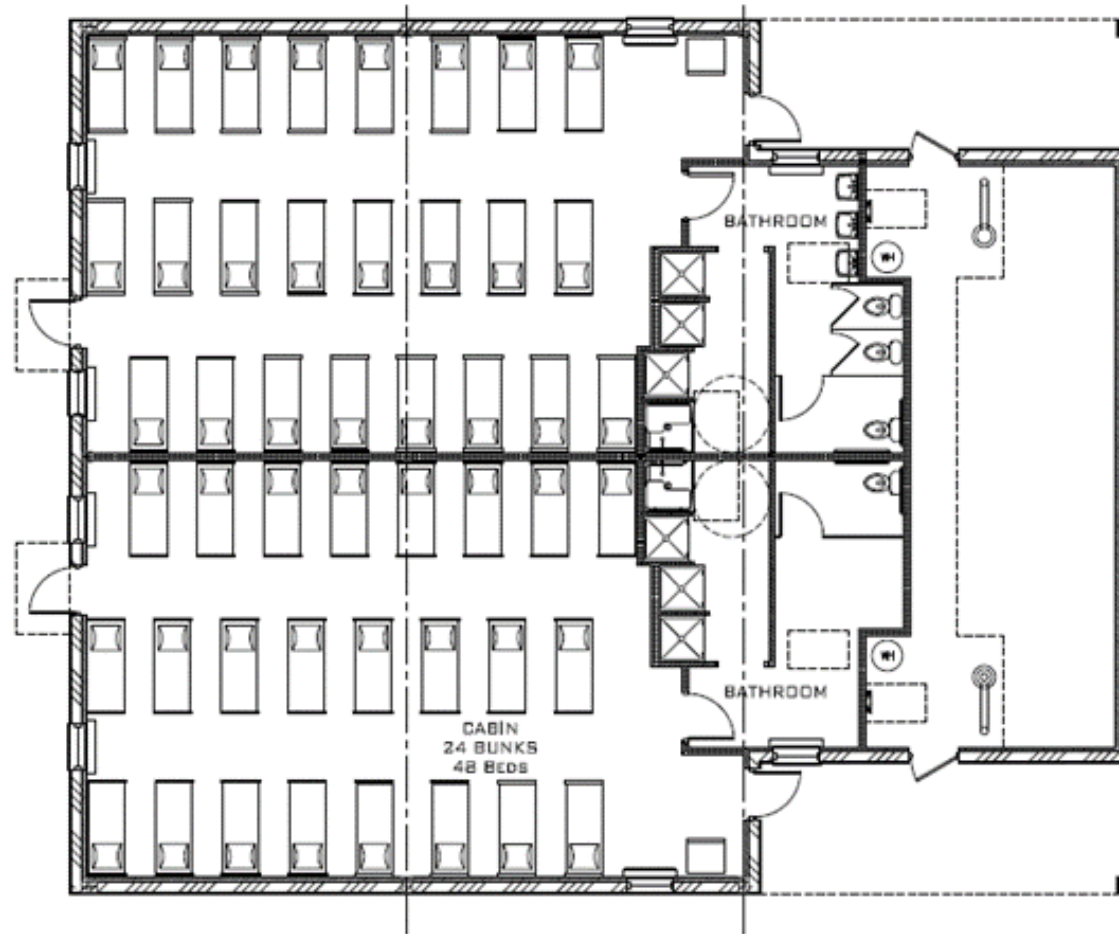
- 
- Below are eight different layouts showing bed capacities between 48 beds and 192 beds
 - Bed setup and configuration will change the capacity of each cabin depending on the group's needs.
 - The construction has been designed and configured in a modular layout where additional facilities could be added as funds become available.
 - The initial design of the facility would include the Fire Suppression capacity for the full quad structure.

48 bed capacity – Estimated Cost = \$608,000



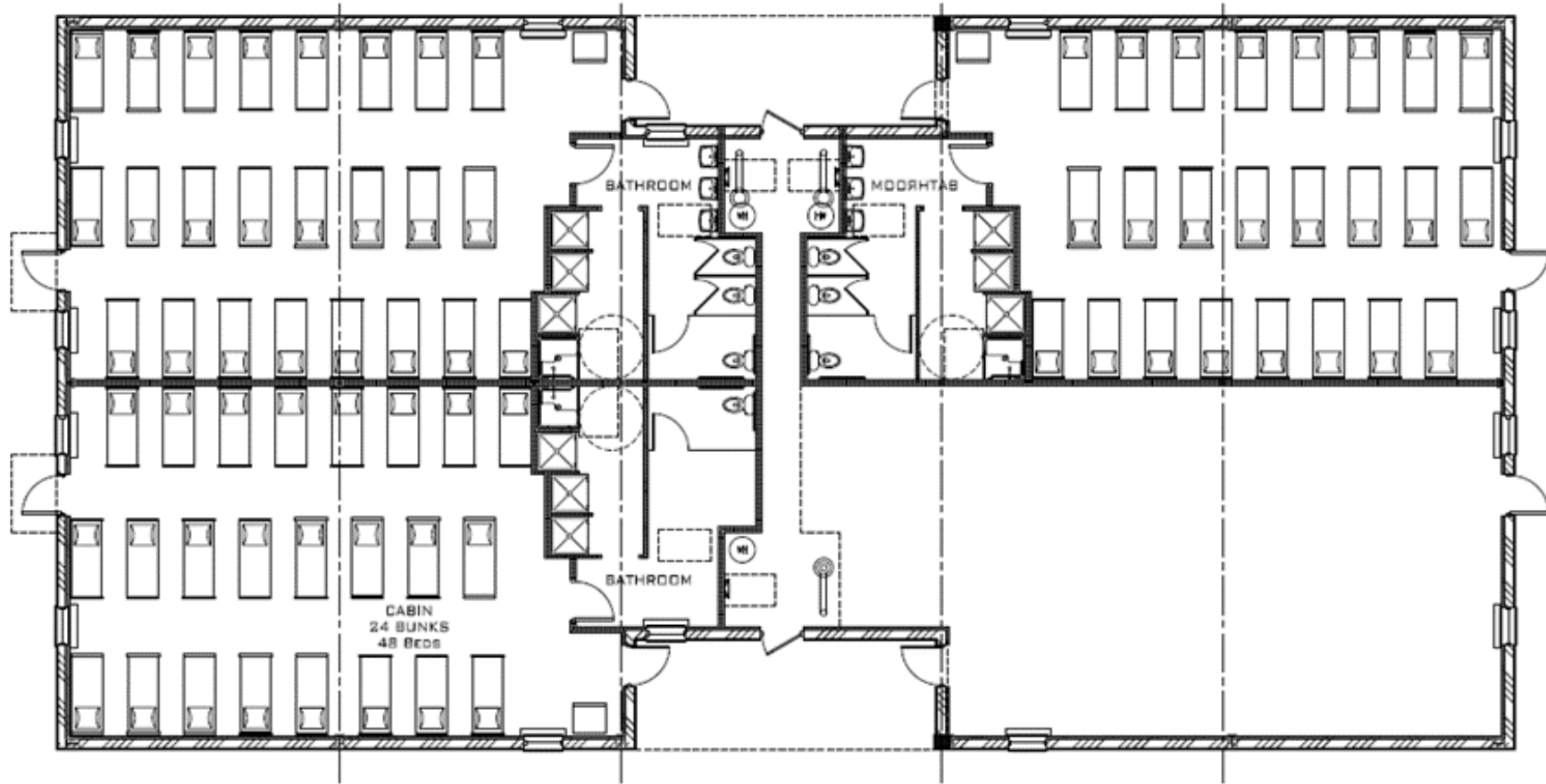
D2 CABIN OPTION D-57'x70' Building + 1 Cabin
Scale: NTS

96 bed capacity – Estimated Cost = \$758,000



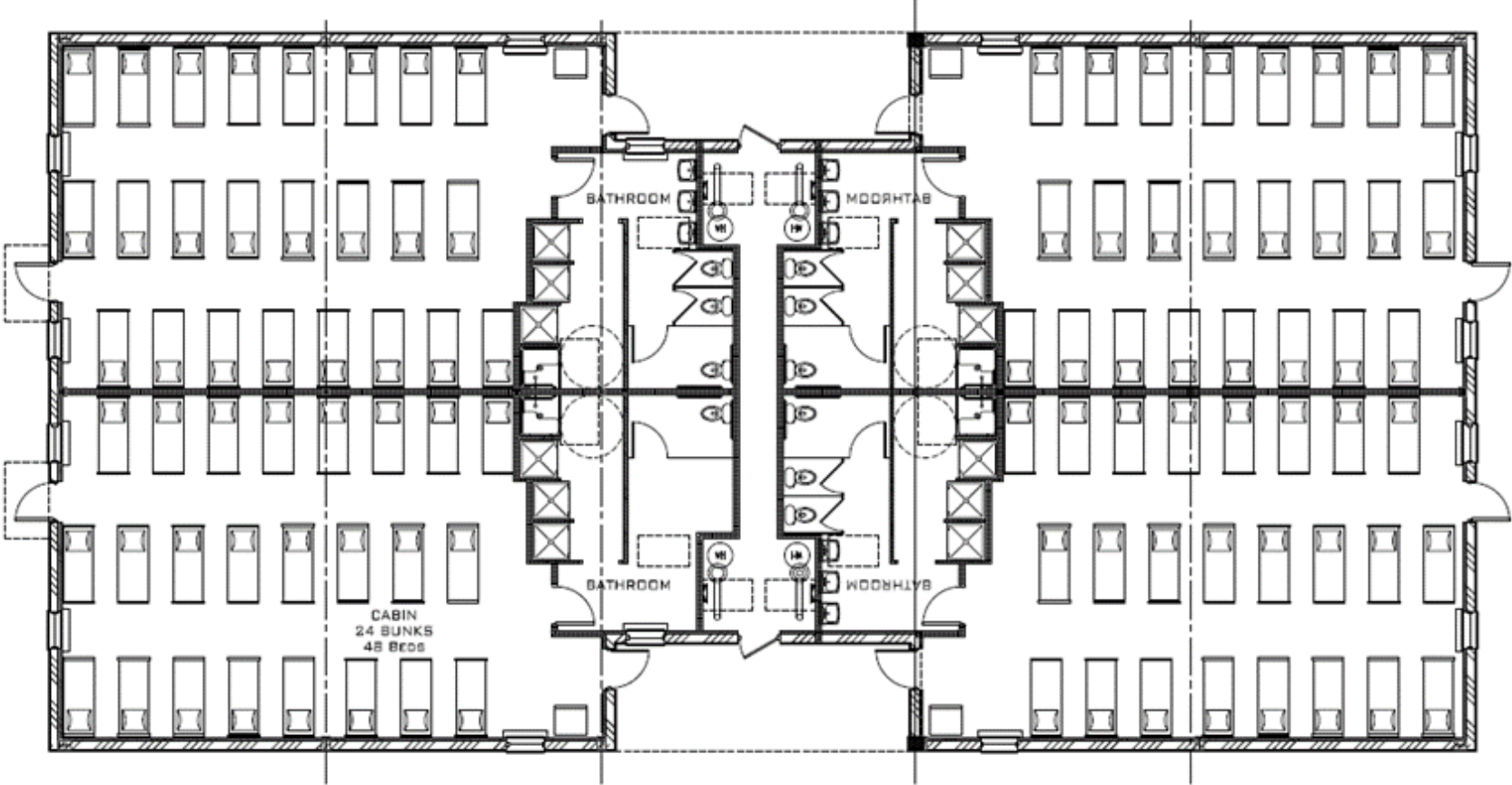
D2 CABIN OPTION D—57'x70' Building + 2 Cabin
Scale: NTS

144 bed capacity – Estimated Cost = \$1,158,000



D2 CABIN OPTION D-57'x70' + 44x57 Addition + 3 Cabin 4-26-19
Scale: NTS

192 bed capacity – Estimated Cost = \$1,308,000



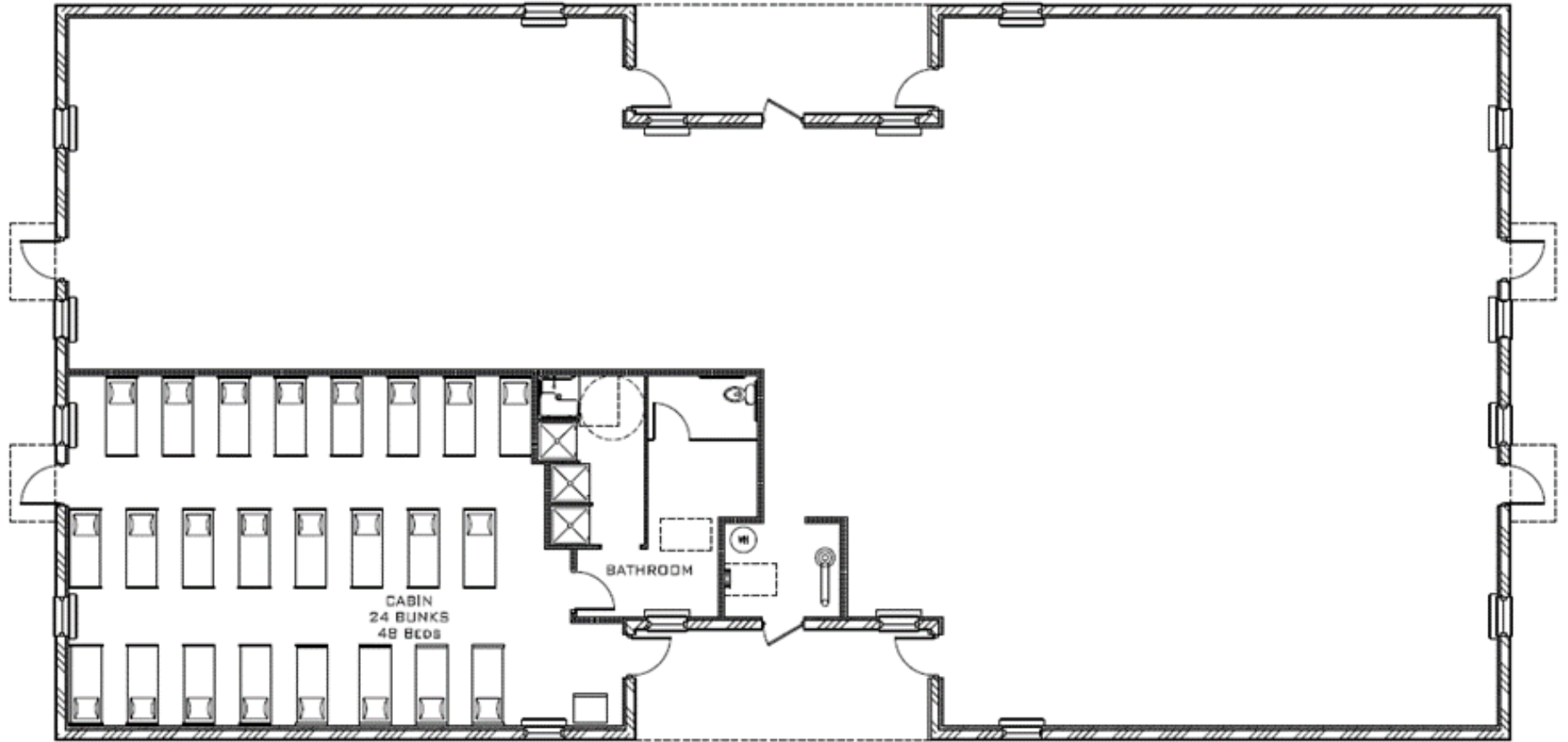
D2 CABIN OPTION D-57'x70' + 44x57 Addition + 4 Cabin 4-26-19
Scale: NTS

Construction is a non-combustible metal building. Colors to match Dining and Events Center, however current pricing includes all metal construction.



D2 CABIN OPTION D – DOUBLE 4-26-19
Scale: NTS

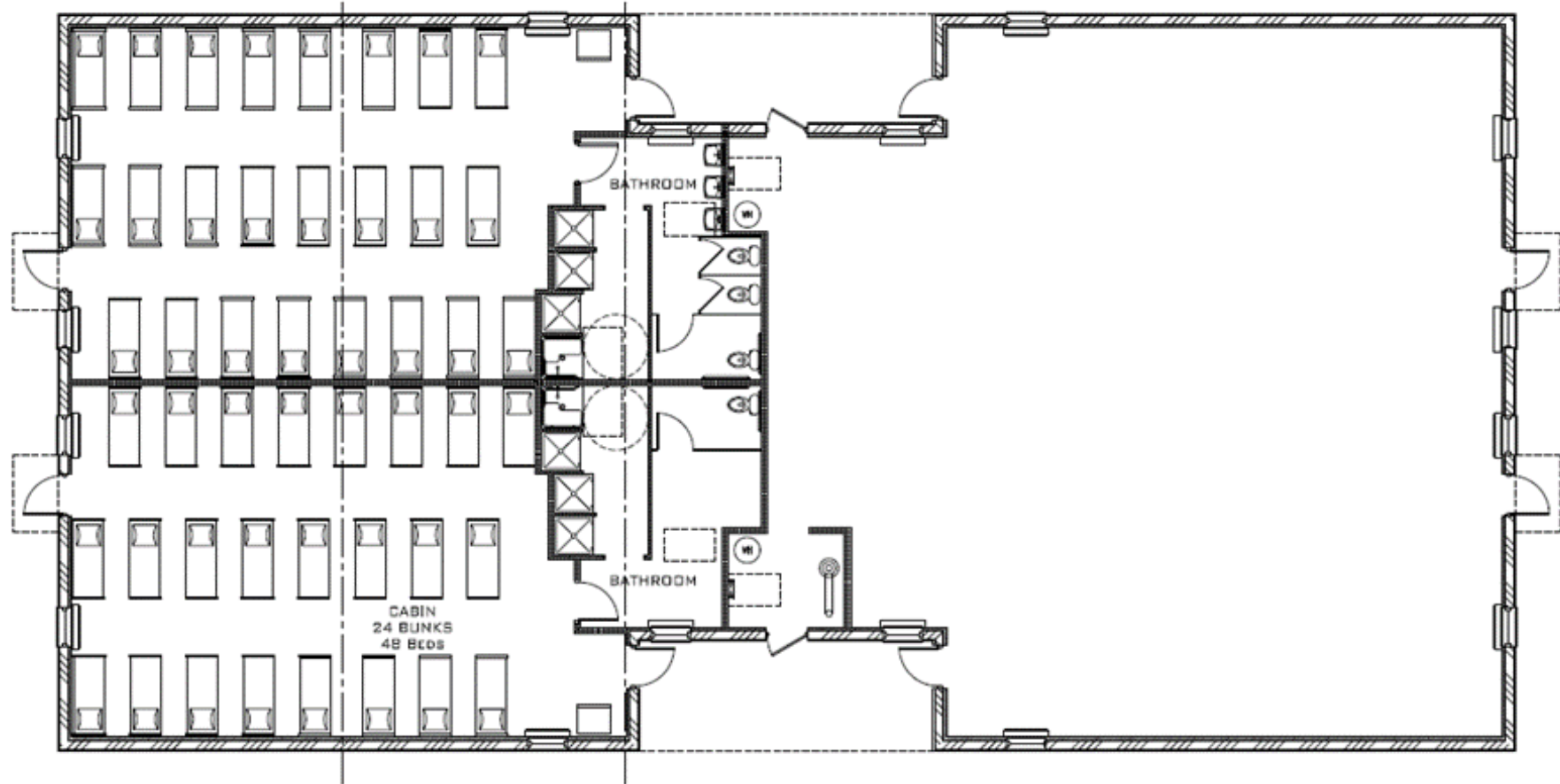
48 bed capacity – Estimated Cost = \$788,000



D CABIN OPTION D – Shell + 1 Cabin
Scale: NTS

4-26-19

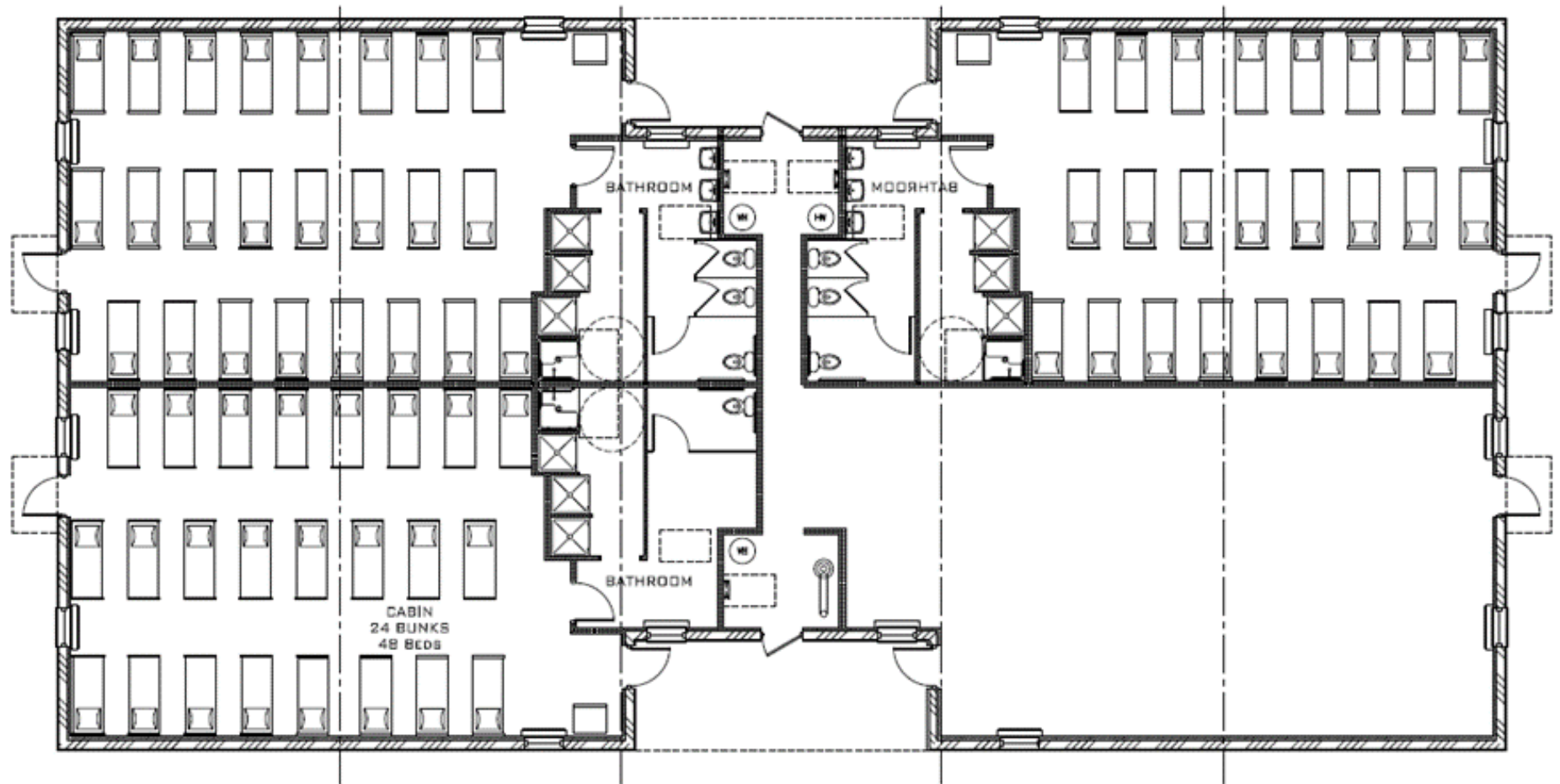
96 bed capacity – Estimated Cost = \$938,000



D CABIN OPTION D – Shell + 2 Cabin
Scale: NTS

4-26-19

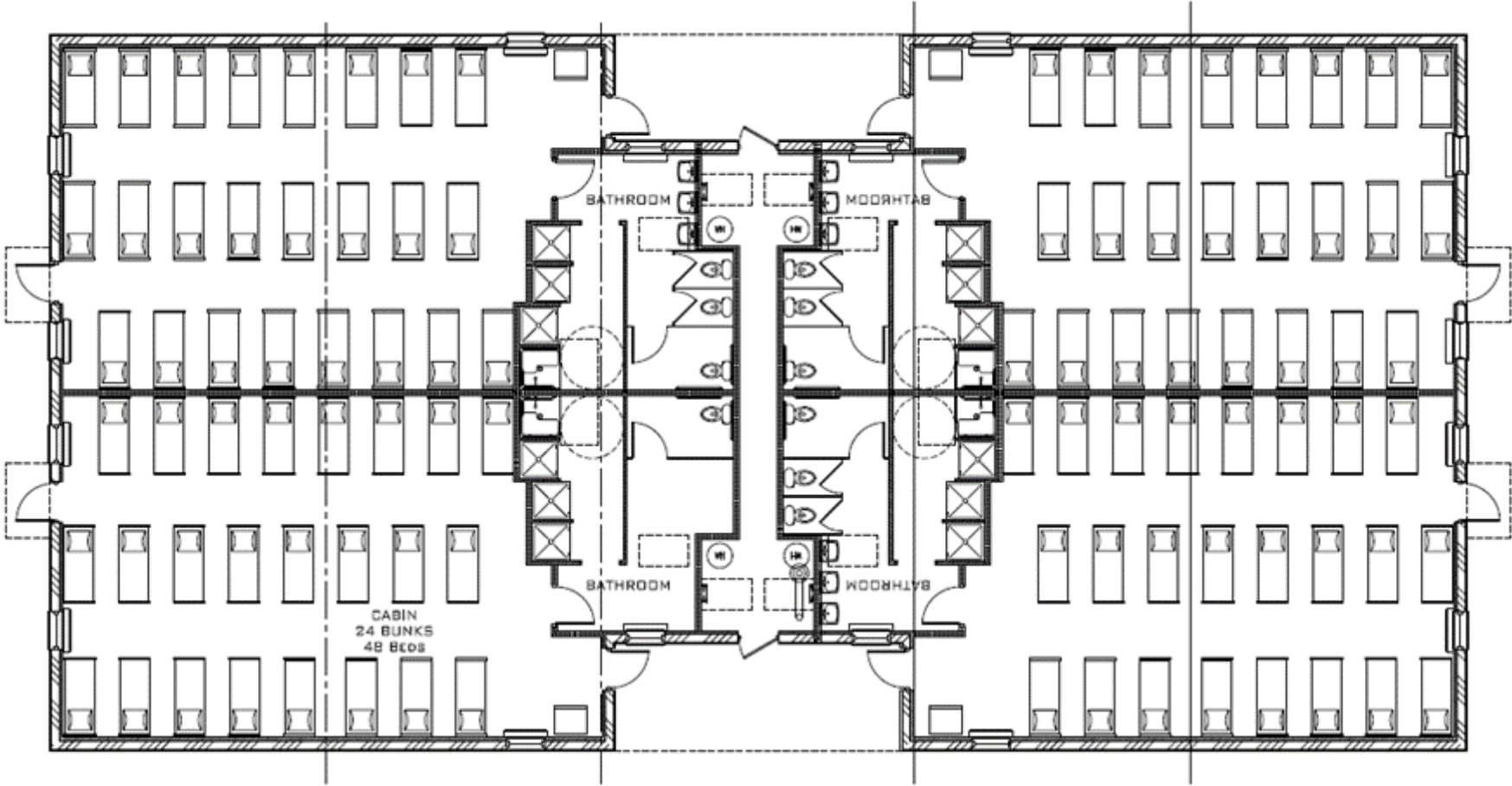
144 bed capacity – Estimated Cost = \$1,088,000



D CABIN OPTION D – Shell + 3 Cabin
Scale: NTS

4-26-19

192 bed capacity – Estimated Cost = \$1,238,000



D

CABIN OPTION D – Shell + 4 Cabin

Scale: NTS

4-26-19

Construction is a non-combustible metal building. Colors to match Dining and Events Center, however current pricing includes all metal construction.



D2

CABIN OPTION D – QUAD
Scale: NTS

4-26-19