

**Barton Community College**  
**Board of Trustees**  
**Board Study Session**  
**June 14, 2022**

**PROPERTY, CASUALTY, WORKERS COMPENSATION, AND OTHER INSURANCE:**

History - The College currently has been insured by a number of independent carriers in recent years starting with EMC, then switching to MHEC, then switching to Chubb/Philadelphia. Reasons for the changes were:

- EMC – long time carrier, canceled our coverage after the Dining Hall fire. They were exiting the Community College market.
- Midwest Higher Education Compact (MHEC) – Consortium of USD's, Colleges & Universities across the country. Due to significant losses, MHEC increased both their rates and deductibles, which made them non-competitive (increased deductibles to more than \$1,000,000).
- Chubb/Philadelphia – Still competitive, but the cost of their coverage and the level of deductibles were not as good as Kansas Educational Risk Management Pool (KERMP).

## What is KERMP (Kansas Educational Risk Management Pool)?

- KERMP is a consortium of KANSAS USD's that have formed a consortium to meet common insurance needs.
- Must be a member of KASB.
- Must be approved to participate by the KERMP Governing Board.
- Initial membership of 2 years is required.
- Once approved to participate, cannot be removed from the consortium.
- All members pay the same prorated fixed costs based on the value of their property.
- For the most part, coverages are much better with KERMP, and deductibles are lower.
- Possibility for dividend returns in future years.
- Risk is spread out among a potential 100 members (all Kansas).
- The consortium is managed by Gallagher (major insurance/benefit Management Company). Gallagher also manages the consortiums for Nebraska, Oklahoma, and Missouri.

# KERMP - A look Back in Time



- **2014:** Gallagher begins talking to school districts in Kansas about forming a group-funded pool for Property/Casualty risks.
- **Spring 2015:** Of 30+ interested districts, KERMP identifies 10 charter members who apply for a Certificate of Authority from the Kansas Insurance Department.
- **June 29<sup>th</sup> 2015 :** Certificate of Authority Granted....
- **July 1<sup>st</sup>:** Pool Launches and begin providing coverage
- **2016:** Pool Grows to 16 Members
- **2017:** Pool Grows to 20 Members
- **2019:** Pool Grows to 23 Members
- **2020:** KERMP forms a strategic partnership with KASB.
- **2021:** Pools Grows to 80 Members
- **2022: Pool Grows to 88 Members** Future remains Bright!

Named Member
■ Andover Unified School District No. 385
■ Baldwin City Unified School District No. 348
■ Bluestem Unified School District No. 205
■ Buhler Unified School District No. 313
■ Clearwater Unified School District No. 264
■ Derby Unified School District No. 260
■ Ell-Saline Unified School District No. 307 (ESSDACK)
■ Eudora Unified School District No. 491
■ Fowler Unified School District No. 225
■ Fort Scott Unified School District No. 234
■ Hays Unified School District No. 489
■ Haysville Unified School District No. 261
■ Renwick Unified School District No. 267
■ Rose Hill Unified School District No. 394
■ Salina Unified School District No. 305
■ Southeast of Saline Unified School District No. 306
■ Topeka Unified School District No. 501
■ Smoky Hill Education Center
■ Easton Unified School District No. 449
■ North Jackson Unified School District No. 335
■ Galena Unified School District No. 499
■ Osage City Unified School District No. 420
■ Goessel Unified School District No. 411
■ Garnett Unified School District No. 365
■ Pawnee Heights Unified School District No. 496
■ Newton Unified School District No. 373
■ Mission Valley Unified School District No. 373
■ Reno County Education Coop 610
■ Riverside Unified School District No. 114
■ Bonner Springs-Edwardsville Unified School District No. 204
■ Emporia Unified School District No. 253
■ Brewster Unified School District No. 314
■ Rock Creek Unified School District No. 323
■ Ellsworth-Kanopolis-Geneseo Unified School District No. 327
■ Wabaunsee Unified School District No. 329
■ Wamego Unified School District No. 320
■ Jefferson West Unified School District No. 340
■ Seaman Unified School District No. 345
■ Goodland Unified School District No. 352
■ Burrton Unified School District No. 369

■ Atchison County Community Schools Unified School District No. 377
■ Shawnee Heights Unified School District No. 450
■ Basehor Linwood Unified School District No. 458
■ Tonganoxie Unified School District No. 464
■ Lawrence Unified School District No. 497
■ Perry Unified School District No. 343
■ Kaw Valley Unified School District No. 321
■ Marais Des Cygnes Valley Unified School District No. 456
■ Washington Unified School District No. 108
■ Unified School District No. 265 Sedgwick County, Kansas (Goddard)
■ Weskan Unified School District No. 242
■ Auburn Unified School District No. 437
■ Troy Unified School District No. 429
■ Wellsville Unified School District No. 289
■ Manhattan-Ogden Unified School District No. 383
■ Cedar Vale Unified School District No. 285
■ Finthills Unified School District No. 492
■ Peabody Burns Unified School District No. 398
■ South Central Kansas Education Service Center
■ Lyons Unified School District No. 405 & Rice County Special Services Cooperative #714
■ Palco Unified School District No. 269
■ Wallace County Schools Unified School District No. 241
■ Marysville Unified School District No. 364
■ Kinsley Offerle Unified School District No. 347
■ Paradise-Natoma-Walso Unified School District No. 399
■ Silver Lake Unified School District No. 372
■ Lewis Unified School District No. 502
■ Concordia Unified School District No. 333
■ Golden Plains Unified School District No. 316
■ Elk Valley Unified School District No. 283
■ Centre Unified School District No. 397
■ Healy Unified School District No. 468
■ Pratt Unified School District No. 382
■ Central Heights Unified School District No. 288
■ Burlingame Unified School District No. 454
■ Riverton Unified School District No. 404
■ Turner Unified School District No. 202
■ Liberal Unified School District No. 480
■ Republic County Unified School District No. 109
■ Bucklin Unified School District No. 459
■ Great Bend Unified School District No. 428

# KERMP Membership List

## 88 Current Members



■ Salina Area Technical College
■ North Central Kansas Technical College dba NCK
■ Barton County Community College
■ Pratt Community College
■ Colby Community College
■ Kansas City Kansas Community College

# What does KERMP bring to my district?

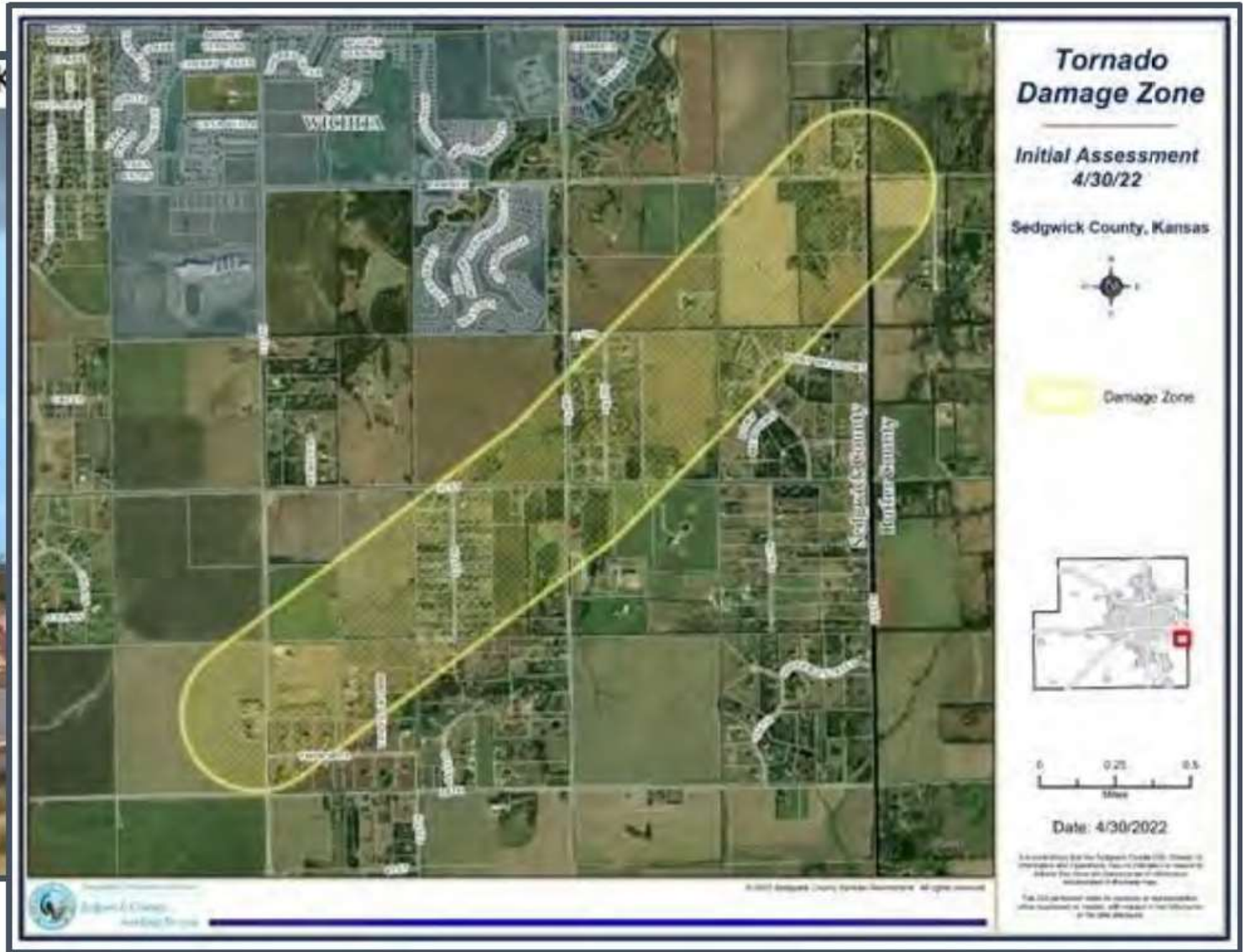


1. **Home** – Your district will not be dropped due to loss history
2. **Voice** – Each member gets a vote
3. **Superior Coverage, Deductibles & Limits**
4. **Competitive Pricing**
5. **Surplus** – Earn Previous Carrier Profit - **\$1.1M Net Position Increase**
6. **Transparency** – 100% transparent in pricing, membership, financials..etc.
7. **Market Diversification & Stability** – Don't put all your eggs in one basket
8. **Dedicated Third Party Administrator** – Claims are adjusted by independent party
9. **Risk Management Resources** – Onsite & online loss control, BRIT TEAM, Enquiron, BetterWorks
10. **Bi Annual Full Membership Meetings** – January & May

**8<sup>th</sup> year of service to  
Kansas Schools!**

# State of the Marketplace

Andover, KS: April 29<sup>th</sup>, 2022



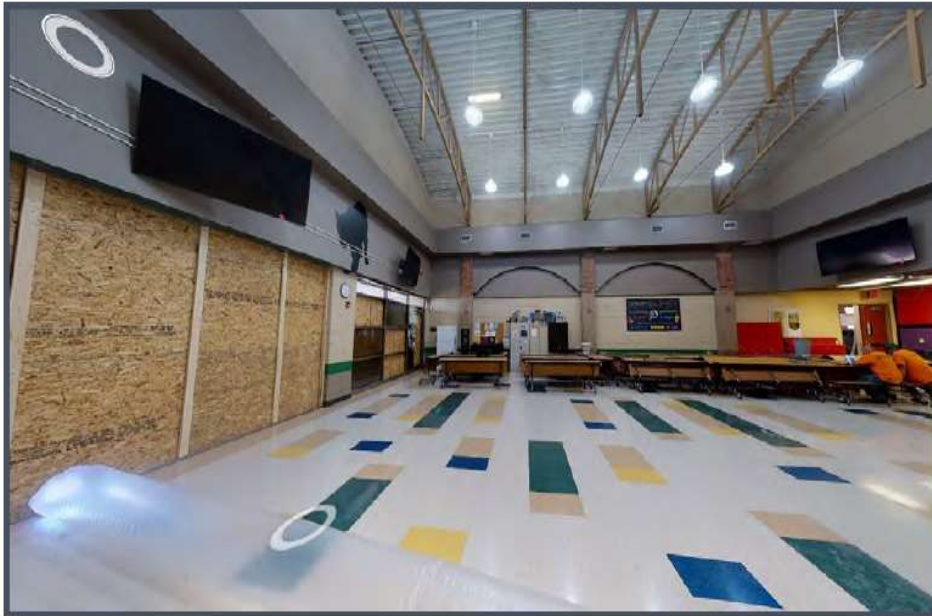
# Andover Tornado

Loss Figure Estimate to Date = \$10,000,000



<https://youtu.be/T2Qu7cgwJmw>

<https://my.matterport.com/show/?m=ikSh2GpkL93>

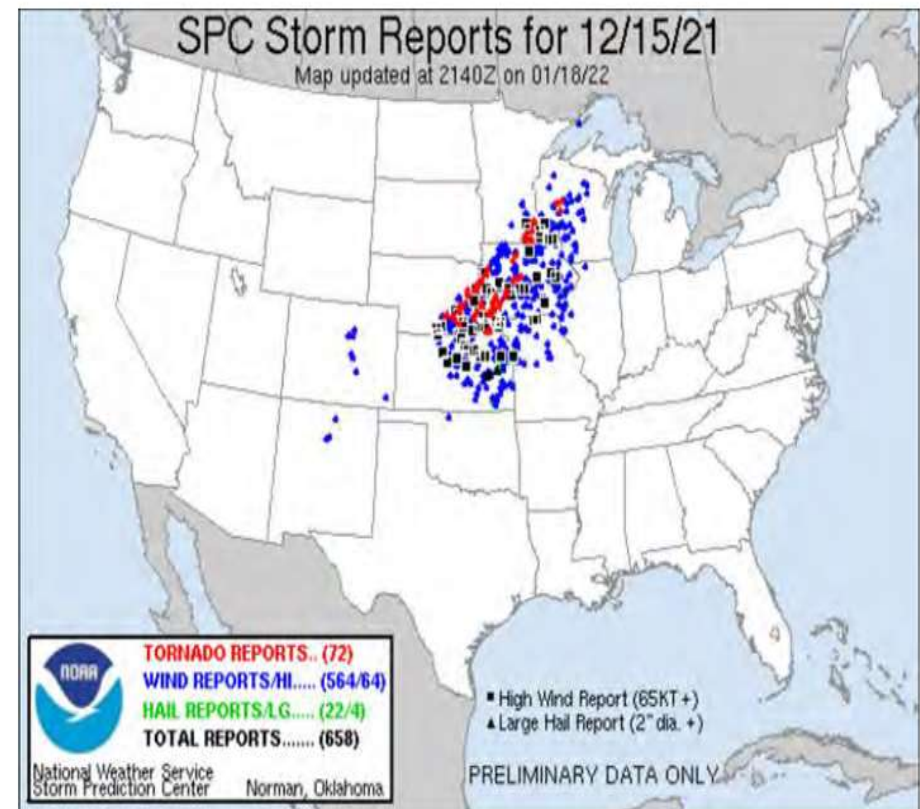


# State of the Marketplace



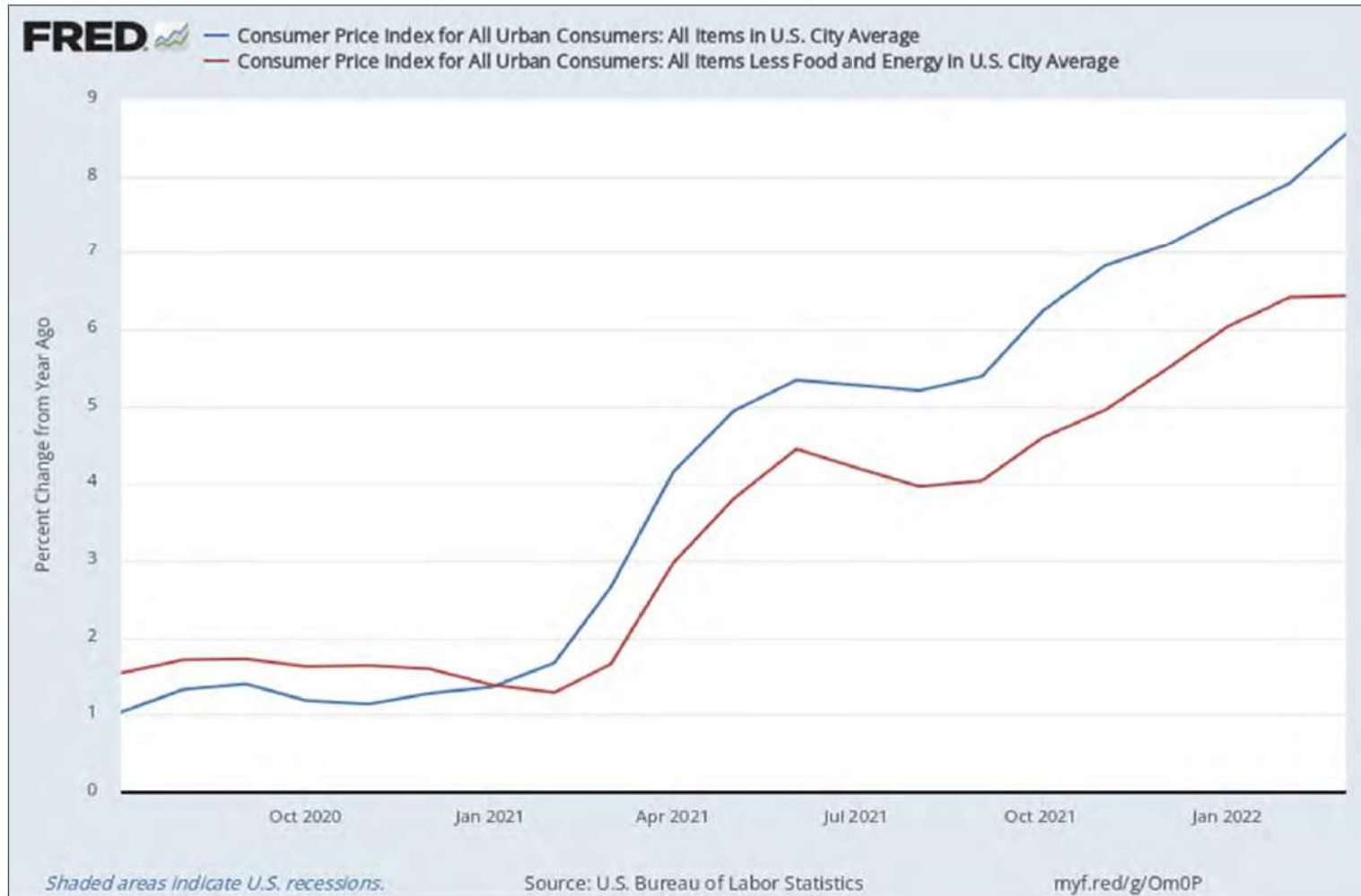
## Property:

- Midwest not immune, Derecho event effected numerous Midwest states and force markets to remodel for Serve Convective Storms (SCS)
- **December 15<sup>th</sup>, 2021 Derecho 2.0**
  - – KERMP had a losses related to both Derechos
- August 10<sup>th</sup>, 2020 Derecho - \$10B+ in damages, one of the costliest events in the past 10 years
- **Valuations of large property schedules is a must**
- • **Carriers are pushing 7-20% valuation increase for Property, 5-10% for contents.**
  - Its recommended that insureds get an updated property appraisal or carriers will add coinsurance or charge a higher rate
- Remodeling based of recent weather, has caused a change in appetite for locations that carriers once provided coverage in





# INFLATION...our biggest new risk? (Hard Market 2.0)



# Key Inflation Metrics Affecting Insurance Costs



- General Inflation Rate (CPI) approximately **8.5%**
- Regular Gas costs on average **58.7%** more than it did a year ago
- Vehicle shortage: New vehicles now selling for **15-25%** over MSRP.
- Construction Materials up roughly 20% in 2021-2022
  - Steel **127%**
  - Aluminum **29.8%**
  - Softwood Lumber **73.9%**
  - Similar story with concrete, roofing materials
- Labor costs are up as job market is tilted in favor of workers. Hard to find skilled labor for large projects or repairs.
- Even retail giant Amazon is applying a **5%** inflation surcharge as of April 2022



# What are insurance markets saying?



- Every line of coverage is affected although Property and Auto most directly affected
  - Insureds located in Catastrophic Exposed zones will see a magnified affect due to frequency and severity of claims
- **Underwriters are demanding trending of values even for customers with recent appraisals**
- Actuaries are trending old losses as if they have new market inflation factors (forward looking calculations.)
- Result is overall increase in premiums across the industry and all sectors



Below you will see the assigned property values for our coverage.

Name	Building Type	Address 1	City	2021 Building Value	2021 Content Value	2022 Building Value	2022 Content Value	Con-tractors	EE/BI	Valuable Papers	Accts Rec	EDP Equip	EDP Media	EDP Extra Expense	Fine Arts	Musical Inst	Total Insured Value
Student Union	Miscellaneous Building	245 NE 30th Rd	Great Bend	\$5,841,651	\$573,164	\$6,285,616	\$616,724	\$0	\$0	\$0	\$0	\$0	\$0	\$0	\$0	\$0	\$6,414,815
Classroom Building	School	245 NE 30th Rd	Great Bend	\$3,509,276	\$595,063	\$3,775,981	\$640,288	\$0	\$0	\$0	\$0	\$0	\$0	\$0	\$0	\$0	\$4,104,339
PhysEd Kirkman Student Activity Ctr	Center	245 NE 30th Rd	Great Bend	\$18,404,524	\$502,817	\$19,003,268	\$541,031	\$0	\$0	\$0	\$0	\$0	\$0	\$0	\$0	\$0	\$18,907,341
Administration Bldg	Administration	245 NE 30th Rd	Great Bend	\$2,028,661	\$651,448	\$2,182,840	\$700,958	\$0	\$0	\$0	\$0	\$0	\$0	\$0	\$0	\$0	\$2,680,109
Planetarium Sci Math Bldg	School	245 NE 30th Rd	Great Bend	\$6,326,335	\$934,394	\$6,907,136	\$1,005,408	\$0	\$0	\$0	\$0	\$0	\$0	\$0	\$0	\$0	\$7,260,729
Technical Building	School	245 NE 30th Rd	Great Bend	\$18,493,079	\$680,835	\$19,898,553	\$732,578	\$0	\$0	\$0	\$0	\$0	\$0	\$0	\$0	\$0	\$19,173,914
Fine Arts	School	245 NE 30th Rd	Great Bend	\$11,978,925	\$2,547,296	\$12,889,323	\$2,740,890	\$0	\$0	\$0	\$0	\$0	\$0	\$0	\$0	\$0	\$14,526,221
Library	Library	245 NE 30th Rd	Great Bend	\$10,454,409	\$693,444	\$11,248,944	\$746,146	\$0	\$0	\$0	\$0	\$0	\$0	\$0	\$0	\$0	\$11,147,853
Maintenance Bldg	Maintenance Building	245 NE 30th Rd	Great Bend	\$355,796	\$122,400	\$382,837	\$131,702	\$0	\$0	\$0	\$0	\$0	\$0	\$0	\$0	\$0	\$478,196
Shipping Receiving Warehouse	Miscellaneous Building	245 NE 30th Rd	Great Bend	\$96,067	\$26,901	\$103,368	\$28,945	\$0	\$0	\$0	\$0	\$0	\$0	\$0	\$0	\$0	\$122,968
Pipeline Training Ctr	Center	245 NE 30th Rd	Great Bend	\$226,322	\$1,196	\$243,522	\$1,287	\$0	\$0	\$0	\$0	\$0	\$0	\$0	\$0	\$0	\$227,518
Generators Four Emergency Backup	Other	245 NE 30th Rd	Great Bend	\$620,736	\$0	\$667,912	\$0	\$0	\$0	\$0	\$0	\$0	\$0	\$0	\$0	\$0	\$620,736
Sports Training Ctr	Center	245 NE 30th Rd	Great Bend	\$478,366	\$2,135	\$514,721	\$2,297	\$0	\$0	\$0	\$0	\$0	\$0	\$0	\$0	\$0	\$480,501
Water Tower	Other	245 NE 30th Rd	Great Bend	\$547,090	\$0	\$588,669	\$0	\$0	\$0	\$0	\$0	\$0	\$0	\$0	\$0	\$0	\$547,090
Cooling Tower	Other	245 NE 30th Rd	Great Bend	\$144,683	\$0	\$155,679	\$0	\$0	\$0	\$0	\$0	\$0	\$0	\$0	\$0	\$0	\$144,683
Pumphouse Including Pump Equipment	Well	245 NE 30th Rd	Great Bend	\$61,488	\$0	\$66,161	\$0	\$0	\$0	\$0	\$0	\$0	\$0	\$0	\$0	\$0	\$61,488
Fence	Yard and Outside	245 NE 30th Rd	Great Bend	\$23,481	\$0	\$25,266	\$0	\$0	\$0	\$0	\$0	\$0	\$0	\$0	\$0	\$0	\$23,481
Campus Lighting	Property in Open	245 NE 30th Rd	Great Bend	\$211,359	\$0	\$227,422	\$0	\$0	\$0	\$0	\$0	\$0	\$0	\$0	\$0	\$0	\$211,359
Track Soccer Complex Storage Bldg	Athletic Field/Stadium	245 NE 30th Rd	Great Bend	\$694,027	\$22,433	\$746,773	\$24,138	\$0	\$0	\$0	\$0	\$0	\$0	\$0	\$0	\$0	\$716,460
Sign Billboard on and off campus	Other	245 NE 30th Rd	Great Bend	\$8,141	\$0	\$8,760	\$0	\$0	\$0	\$0	\$0	\$0	\$0	\$0	\$0	\$0	\$8,141
Athletic Field Club House	Athletic Field/Stadium	245 NE 30th Rd	Great Bend	\$118,058	\$14,341	\$127,030	\$15,431	\$0	\$0	\$0	\$0	\$0	\$0	\$0	\$0	\$0	\$132,399
Softball Field Complex	Athletic Field/Stadium	245 NE 30th Rd	Great Bend	\$374,920	\$0	\$403,414	\$0	\$0	\$0	\$0	\$0	\$0	\$0	\$0	\$0	\$0	\$374,920
Soccer Practice Fields	Athletic Field	245 NE 30th Rd	Great Bend	\$11,966	\$0	\$12,876	\$0	\$0	\$0	\$0	\$0	\$0	\$0	\$0	\$0	\$0	\$11,966
Baseball Field Complex	Athletic Field/Stadium	245 NE 30th Rd	Great Bend	\$482,040	\$0	\$518,675	\$0	\$0	\$0	\$0	\$0	\$0	\$0	\$0	\$0	\$0	\$482,040
One Stop Education Ctr	School	1025 Main St	Great Bend	\$2,174,455	\$57,802	\$2,339,713	\$62,195	\$0	\$0	\$0	\$0	\$0	\$0	\$0	\$0	\$0	\$2,232,257
Computer Classroom Riley	School	Fort Riley KS-	Fort Riley	\$0	\$69,912	\$0	\$75,225	\$0	\$0	\$0	\$0	\$0	\$0	\$0	\$0	\$0	\$69,912
Hannington Pumphouse Pumps	Well	N US Hwy 281	Great Bend	\$24,885	\$0	\$26,776	\$0	\$0	\$0	\$0	\$0	\$0	\$0	\$0	\$0	\$0	\$24,885
Classroom Grandview Plaza	School	100 Continental Dr	Grandview Plaza	\$921,232	\$164,953	\$991,246	\$177,489	\$0	\$0	\$0	\$0	\$0	\$0	\$0	\$0	\$0	\$1,086,185
Larned Correctional Facility	Other	1318 KS-264	Larned	\$0	\$61,560	\$0	\$66,239	\$0	\$0	\$0	\$0	\$0	\$0	\$0	\$0	\$0	\$61,560
Ellsworth Correctional Facility	Other	1607 State St	Ellsworth	\$0	\$76,950	\$0	\$82,798	\$0	\$0	\$0	\$0	\$0	\$0	\$0	\$0	\$0	\$76,950
Dorm Unit 1-12, 6 small bldgs	Dorm	245 NE 30th Rd	Great Bend	\$3,473,550	\$111,821	\$3,737,540	\$120,319	\$0	\$0	\$0	\$0	\$0	\$0	\$0	\$0	\$0	\$3,585,371
Directors Apt- Unit 13-14, 1 small bldg	Dwelling	245 NE 30th Rd	Great Bend	\$191,846	\$59,755	\$206,426	\$64,296	\$0	\$0	\$0	\$0	\$0	\$0	\$0	\$0	\$0	\$251,601
Dorm Units Phase II 15-20, 3 small bldgs	Dorm	245 NE 30th Rd	Great Bend	\$963,746	\$57,364	\$1,036,991	\$61,724	\$0	\$0	\$0	\$0	\$0	\$0	\$0	\$0	\$0	\$1,021,110
Dorm Units Phase III 21-34 Commons Bldg & 5 bldg	Dorm	245 NE 30th Rd	Great Bend	\$3,212,488	\$113,532	\$3,456,637	\$122,160	\$0	\$0	\$0	\$0	\$0	\$0	\$0	\$0	\$0	\$3,326,020
Dormitory Phase IV	Dorm	245 NE 30th Rd	Great Bend	\$3,725,524	\$197,340	\$4,008,664	\$212,338	\$0	\$0	\$0	\$0	\$0	\$0	\$0	\$0	\$0	\$3,922,064
Dorm Unit V	Dorm	245 NE 30th Rd	Great Bend	\$5,715,313	\$334,919	\$6,149,676	\$360,373	\$0	\$0	\$0	\$0	\$0	\$0	\$0	\$0	\$0	\$6,050,232
Dwelling- 30 yr tenant	Dwelling	Mullin Creek Property	Great Bend	\$74,889	\$0	\$80,581	\$0	\$0	\$0	\$0	\$0	\$0	\$0	\$0	\$0	\$0	\$74,889
Dwelling- 10 yr tenant	Dwelling	Mullin Creek Property	Great Bend	\$124,569	\$0	\$134,036	\$0	\$0	\$0	\$0	\$0	\$0	\$0	\$0	\$0	\$0	\$124,569
Barn	Barn	Mullin Creek Property	Great Bend	\$24,885	\$0	\$26,776	\$0	\$0	\$0	\$0	\$0	\$0	\$0	\$0	\$0	\$0	\$24,885
Garage	Garage	Mullin Creek Property	Great Bend	\$13,310	\$0	\$14,321	\$0	\$0	\$0	\$0	\$0	\$0	\$0	\$0	\$0	\$0	\$13,310
Garage	Garage	Mullin Creek Property	Great Bend	\$13,310	\$0	\$14,321	\$0	\$0	\$0	\$0	\$0	\$0	\$0	\$0	\$0	\$0	\$13,310
Ranger House	Dwelling	884 NE 110 Ave	Clafin	\$196,186	\$89,108	\$211,096	\$95,880	\$0	\$0	\$0	\$0	\$0	\$0	\$0	\$0	\$0	\$285,294
Martin Lodge	Dwelling	884 NE 110 Ave	Clafin	\$188,519	\$1,196	\$202,846	\$1,287	\$0	\$0	\$0	\$0	\$0	\$0	\$0	\$0	\$0	\$189,715
Sundowner Lodge	Dwelling	884 NE 110 Ave	Clafin	\$79,879	\$1,196	\$85,950	\$1,287	\$0	\$0	\$0	\$0	\$0	\$0	\$0	\$0	\$0	\$81,075
Aldrich Shop	Shop	884 NE 110 Ave	Clafin	\$38,341	\$1,196	\$41,255	\$1,287	\$0	\$0	\$0	\$0	\$0	\$0	\$0	\$0	\$0	\$39,537
Swimming Pool	Pool	884 NE 110 Ave	Clafin	\$227,579	\$1,196	\$244,875	\$1,287	\$0	\$0	\$0	\$0	\$0	\$0	\$0	\$0	\$0	\$228,775
Camp Aldrich Pump House Equip	Well	884 NE 110 Ave	Clafin	\$16,285	\$1,196	\$17,523	\$1,287	\$0	\$0	\$0	\$0	\$0	\$0	\$0	\$0	\$0	\$17,481
Pleasant View Lodge	Dwelling	884 NE 110 Ave	Clafin	\$163,573	\$1,196	\$176,005	\$1,287	\$0	\$0	\$0	\$0	\$0	\$0	\$0	\$0	\$0	\$164,769
Sun A Risen Lodge	Dwelling	884 NE 110 Ave	Clafin	\$124,883	\$1,143	\$134,374	\$1,230	\$0	\$0	\$0	\$0	\$0	\$0	\$0	\$0	\$0	\$126,026
Dining & Events Center	Miscellaneous Building	885 NE 110 Ave	Clafin	\$2,587,928	\$261,656	\$2,784,610	\$281,542	\$0	\$0	\$0	\$0	\$0	\$0	\$0	\$0	\$0	\$2,849,584
Trails Lodge	Dwelling	885 NE 110 Ave	Clafin	\$1,151,540	\$100,000	\$1,239,057	\$107,800	\$0	\$0	\$0	\$0	\$0	\$0	\$0	\$0	\$0	\$1,251,540
Throughout District	Throughout District			\$0	\$0	\$0	\$0	\$612,833	\$18,386,442	\$10,000	\$10,000	\$100,000	\$10,000	\$10,000	\$860,000	\$100,000	\$22,586,263
				\$106,920,116	\$9,132,858	\$115,046,045	\$9,826,955	\$612,833	\$18,386,442	\$10,000	\$10,000	\$100,000	\$10,000	\$10,000	\$860,000	\$100,000	\$138,561,237

**PREMIUM & COVERAGE COMPARISON**

**Barton County Community College**

	<b>2021-2022</b>		<b>2022-2023</b>			
	<b>KERMP</b>		<b>KERMP</b>			
	<b>Limits</b>	<b>Premium</b>	<b>Limits</b>	<b>Premium</b>		
	<b>KERMP \$300M Program Limit</b>		<b>KERMP \$300M Program Limit</b>			
<b>Property:</b>	<b>Main Campus</b>		<b>Main Campus</b>			
Blanket Building	\$	127,837,770	\$	138,561,237		
Blanket BPP		Included		Included		
Scheduled Equipment		Included		Included		
Business Income/Extra Expense	\$	18,386,442	\$	18,386,442		
Deductible - All Other Perils	\$	50,000	\$	50,000		
Deductible - Wind/Hail	\$	250,000	\$	250,000		
<b>Total PROP</b>						
<b>Cyber Liability</b>	<b>Cyber Liability</b>		<b>Cyber Liability</b>			
Cyber Incident Response Costs	\$	2,000,000	\$	2,000,000		
Legal and Regulatory Costs	\$	2,000,000	\$	2,000,000		
IT Security and Forensic Costs	\$	2,000,000	\$	2,000,000		
Crisis Communication Costs	\$	1,000,000	\$	1,000,000		
Privacy Breach Management Costs	\$	2,000,000	\$	2,000,000		
Income Loss and Extra Expense	\$	2,000,000	\$	2,000,000		
Regulatory Fines	\$	2,000,000	\$	2,000,000		
PCI Fines, Penalties, and Assessments	\$	2,000,000	\$	2,000,000		
Cyber Extortion	\$	2,000,000	\$	2,000,000		
Continuity and Prior & Pending Date		Full Prior Acts		Full Prior Acts		
Deductible	\$	10,000	\$	10,000		
<b>Total CYBER</b>						
<b>Crime Liability</b>	<b>Crime</b>		<b>Crime</b>			
Employee Theft	\$	1,000,000	\$	1,000,000		
Forgery or Alteration	\$	1,000,000	\$	1,000,000		
Theft of Money and Securities-Inside	\$	1,000,000	\$	1,000,000		
Theft of Money and Securities-Outside	\$	1,000,000	\$	1,000,000		
Computer Fraud	\$	1,000,000	\$	1,000,000		
<b>Total Fiduciary and Crime Liability</b>						
<b>Auto Package</b>	<b>Auto Liability</b>		<b>Auto Liability</b>			
Commercial Auto - Combined Single Limit	\$	2,000,000	\$	2,000,000		
Comprehensive and Collision Deductible		\$1,000/\$1,000		\$1,000/\$1,000		
Garagekeepers	\$	100,000	\$	100,000		
Deductible- Comprehensive						
Deductible- Collision						
<b>Total Auto Package</b>						
<b>General Liability</b>	<b>General Liability</b>		<b>General Liability</b>			
Aggregate	\$	4,000,000	\$	4,000,000		
Product & Completed Operation Aggregate	\$	4,000,000	\$	4,000,000		
Personal & Advertising Injury	\$	2,000,000	\$	2,000,000		
General Liability - Occurrence	\$	2,000,000	\$	2,000,000		
Fire Damage Liability	\$	1,000,000	\$	1,000,000		
Medical Payments (Excluding Students)	\$	5,000	\$	5,000		
Employee Benefits - Occurrence	\$	2,000,000	\$	2,000,000		
Employee Benefits - Aggregate	\$	4,000,000	\$	4,000,000		
Retro Date		Full Prior Acts		Full Prior Acts		
Deductible	\$	1,000	\$	1,000		
Sexual Misconduct Occ/Agg	\$	4,000,000	\$	4,000,000		
L Enforcement Liability	\$	2,000,000	\$	2,000,000		
Deductible	\$	2,500	\$	2,500		
<b>Educators Legal Liability</b>						
Board Liability & Professional Educators Liability	\$	2,000,000	\$	2,000,000		
Retro Date		Full Prior Acts		Full Prior Acts		
Deductible						
<b>Nurses Professional Liability</b>						
Aggregate		Included		Included		
Occurrence		Included		Included		
Retro Date						
Deductible (per individual)						
Athletic Participation						
Crisis Management Expense - Each Event						
<b>Total Liability Package</b>		\$	<b>298,307</b>	\$	<b>378,948</b>	
<b>Excess:</b>	<b>\$3M x \$2M</b>	\$	38,233	<b>\$3M x \$2M</b>	\$	30,917
Occurrence	\$	3,000,000	\$	3,000,000		
Aggregate	\$	3,000,000	\$	3,000,000		
<b>Total EXLL</b>	<b>Total KERMP</b>	\$	<b>336,540</b>	<b>Total KERMP</b>	\$	<b>409,865</b>
	<b>United Heartland</b>		<b>United Heartland</b>			
<b>Workers Compensation (MultiState):</b>		\$	81,221		\$	75,527
Employer Liability	\$1Mil / \$1Mil / \$1Mil			\$1Mil / \$1Mil / \$1Mil		
Deductible - Per Claim	\$	500	\$	500		
Experience Modification		0.67		0.62		
<b>Total WC</b>		\$	<b>81,221</b>		\$	<b>75,527</b>
<b>Total</b>		\$	<b>417,761</b>		\$	<b>485,392</b>

Three brokers are approved providers of the KERMP program. Conrade Insurance Group is our current broker, and coordinates the KERMP program for approximately 75% of the State of Kansas.

Barton's increase for FY23 amounts to a 16.2% increase over the previous year. In visiting with Conrade, this is below the average increases industry wide. Most independent carriers are increasing Wind/Hail deductibles to between \$1,000,000-\$2,000,000 or a percentage of the property value. For Barton, we have a property value of \$138, 561,237. At a 2% Wind/Hail deductible, our deductible would be around \$2.7 million.

Both the recent Andover tornado and the Wind/Hail damage in the northwest corner of the state on June 7<sup>th</sup> resulted in large claims to schools within the state.

**Since this was a two-year commitment, no action is required of the Board for the FY23 Coverage.**