



FOUNDATION UPDATES

Faculty Mini-Grants

Faculty Mini-Grants

- 🐾 22 requests, totaling \$32,801.60
- 🐾 20 grants, totaling \$19,979.52
- 🐾 2 awards from other monies
- 🐾 The funds for this initiative are raised at the Annual Sporting Clay Shoot each year in April



Academics

- 🐾 **Jaime Abel, Education** - education and apprenticeship fair for current and prospective students
- 🐾 **Amir Meraban, Science** - cadaver dissection lab, with recording via Go-Pro for online and future students
- 🐾 **Mark Freeman, Ceramics** - raku kiln
- 🐾 **Brandon Steinert, Communications** - auxiliary camera equipment
- 🐾 **Danika Bielek, Dance** - student class fees at three NYC dance studios
- 🐾 **Stephanie Schottel, Foreign Language** - TalkAbroad online subscription
- 🐾 **Jason Lindstrom, History** - World War I Museum entrance fees in Kansas City
- 🐾 **Jo Harrington, Math** - 11 graphing calculators for the student check-out program
- 🐾 **Eric Foley, Music** - Hot Spot monitor and microphone
- 🐾 **Jamie Minneman, Music** - KC Jazz Museum entrance fees
- 🐾 **Kyle LeRoy, Physical Education** - referee/umpire equipment
- 🐾 **Dan Williams, Theatre** - table saw

Workforce Training

- 🐾 **Maggie Tracy, Agriculture** - bovine fetal development models
- 🐾 **Jennifer Steinert, Business** - Clifton Strengths Finder student assessments
- 🐾 **Matt Mazouch, Carpentry** - planer and mobile toolboxes
- 🐾 **Nicholas Larmer, EMS** - video laryngoscope
- 🐾 **Jill Lawson, Nursing** - obstetric dilation charts, cervical dilation/effacement models, cervical cancer charts
- 🐾 **Tana Yellowwolf, Nursing** - geriatric mannequin kits
- 🐾 **Lawrence Weber, OSHA** - 8 NFPA 70E Electrical books
- 🐾 **Jeff Meyer, Plumbing** - PEX tool and fittings

Other Awards

- 🐾 **Nolan Esfeld, Developmental Education** - marker-top worktables
- 🐾 **Alejandro Avila, Music** - student and community masterclasses with public performances

A desk scene featuring a red toy truck with autumn leaves in its bed, a pink straw, a white coffee cup, and several papers. One paper is a honeycomb-patterned envelope with a yellow ribbon and the words "Thank You" written on it. Another paper has handwritten text starting with "Dear Lynn and Hazel".

FOUNDATION UPDATES

Employee Giving Campaign

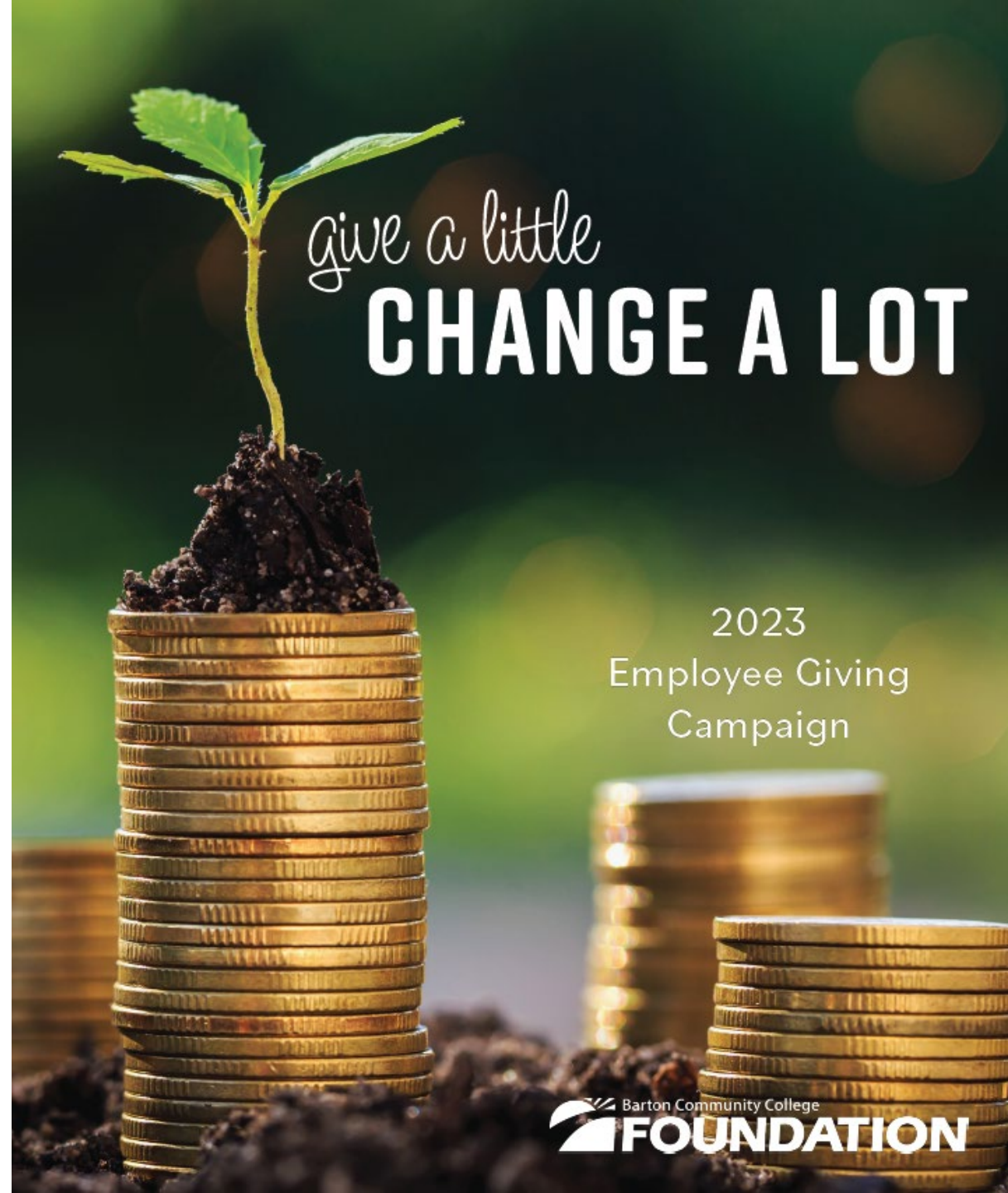
Employee Giving

- 🐾 November 1-30
- 🐾 Foundation Open House Nov. 15
- 🐾 Barton employees are **AMAZING!**

\$13,242 raised

83 employees donated

14 funds supported



give a little
CHANGE A LOT

2023
Employee Giving
Campaign

Employee Giving

Funds Supported:

Ag and Transportation Complex

BASICS Annual Fund

Barton County Upward Bound

BEST Scholarship

Cougar Supply Den

Dance

Dr. Raymond J. Leiker Scholarship for MLT Studies

Jack Kilby STEM Day

LaOportunidad Scholarship

Life Sciences

Student Emergency Assistance Fund

Unrestricted Fund

Veterans Scholarship

Vocal/Instrumental Music Endowment

Employee Giving

Donors:

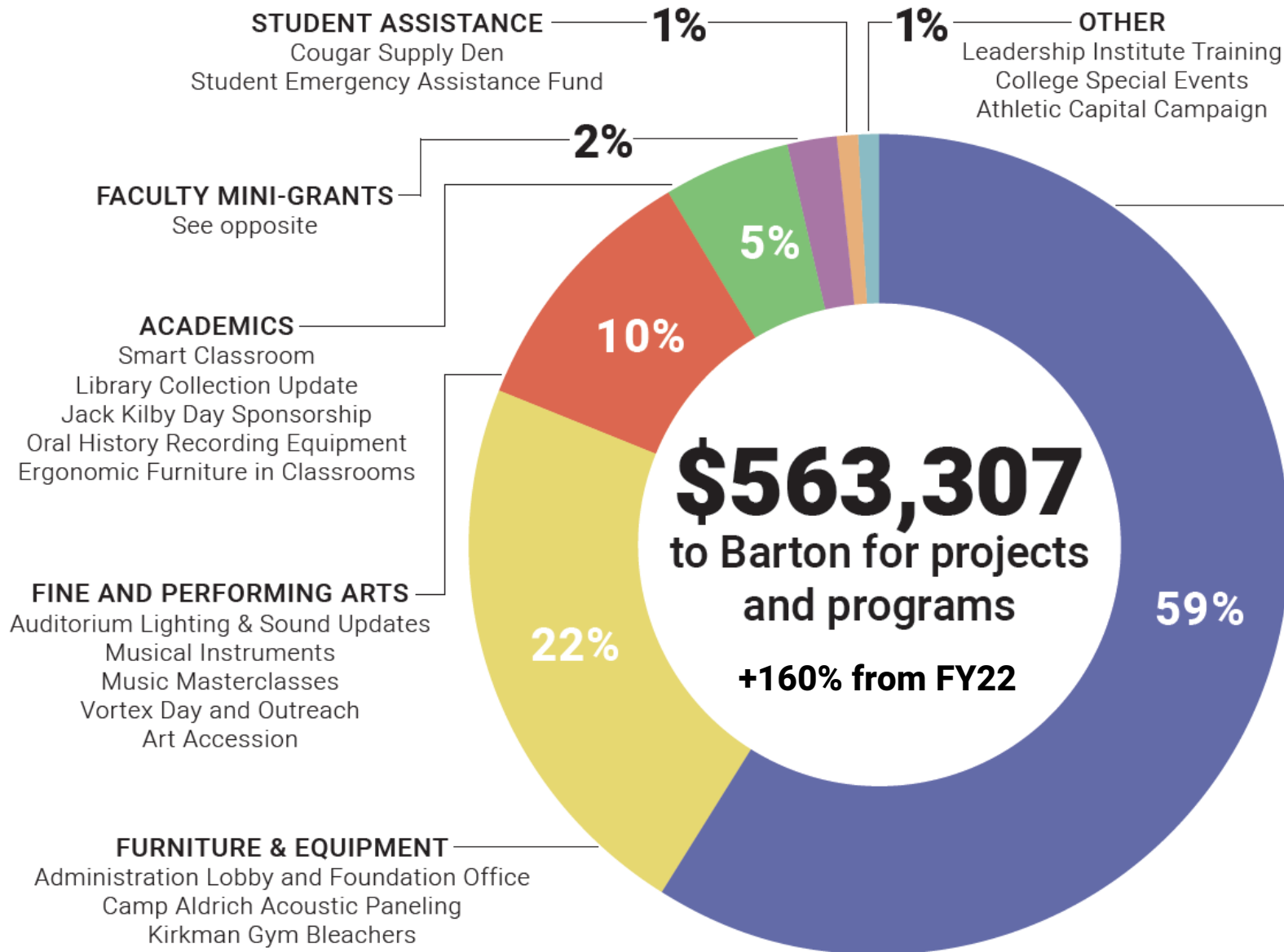
Anonymous (45)	The Lindstrom Family	Paige Scott
Avon from Cherish	In Memory of Fred Johnson	Elaine Simmons
Mark and Lindsey Bogner	Angela and Bill Maddy	Jason and Renae Skelton
Lori Crowther	In Memory of Charles W. McCormick	Dee Ann Smith and Family
The Dannebohm Family	Mollie McReynolds	Sheila Smither
Erin Dannebohm	Nicolet Farms	Rick and Jill Snell
In Honor of Maretto D'Italia	Steve and Amy Oelke	Kristi Suppes
Carla Enstrom	Gina M. Owen	Andrea Thompson MLT (ASCP)
Mary Foley	Sue Ann Peter	The Webers
Vern Fryberger	Dr. Oleg Ravitskiy	Dustin and Amy Wheeler
Larissa Graham	The Rivas Family	The White Family
The Harrington Family	Linda Rothwell	
The Harris Family	Travis and Shelli Schmidt and family	

A photograph of a graduate in a blue cap and gown, wearing glasses, celebrating with his arms raised. The background is filled with other graduates and a shower of blue and yellow confetti. The image has a blue color overlay.

FOUNDATION UPDATES

Annual Report

Enhancement Grants



STUDENT ASSISTANCE — 1%
Cougar Supply Den
Student Emergency Assistance Fund

OTHER — 1%
Leadership Institute Training
College Special Events
Athletic Capital Campaign

WORKFORCE TRAINING
Ag and Transportation Complex
Business Department Education
Nursing Faculty Education
Criminal Justice Tactical Evidence Collection Kits
EMS Mannequin and Airway Simulator

FACULTY MINI-GRANTS
See opposite

ACADEMICS
Smart Classroom
Library Collection Update
Jack Kilby Day Sponsorship
Oral History Recording Equipment
Ergonomic Furniture in Classrooms

FINE AND PERFORMING ARTS
Auditorium Lighting & Sound Updates
Musical Instruments
Music Masterclasses
Vortex Day and Outreach
Art Accession

FURNITURE & EQUIPMENT
Administration Lobby and Foundation Office
Camp Aldrich Acoustic Paneling
Kirkman Gym Bleachers

Grow With Us Capital Campaign

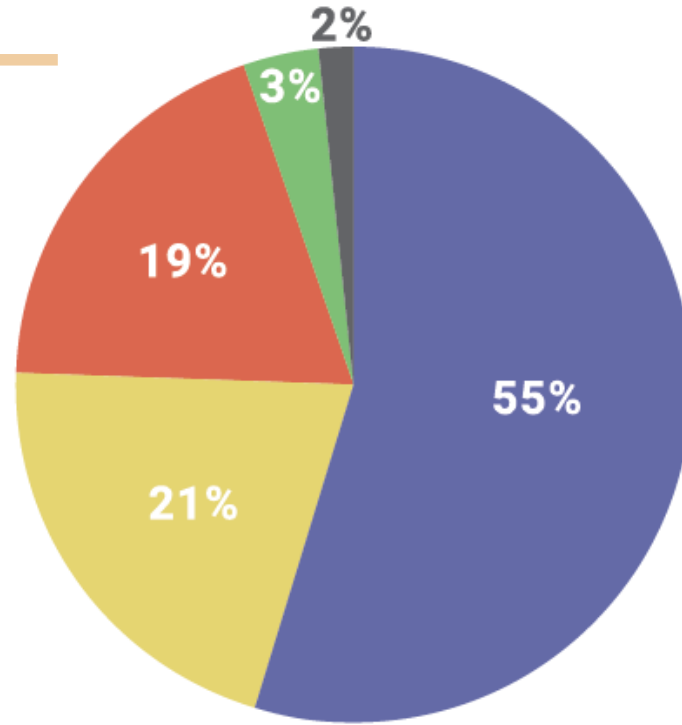
After holding a groundbreaking ceremony in February, the Foundation has been working on a comprehensive capital campaign, called “Grow With Us” to raise funds for the new Agriculture and Transportation Complex. The new complex will house classes for seven certificate programs, two AAS (non-transfer) degree programs, and five AS (transfer) degree programs in the Workforce Training division. This includes the creation of a certificate program in a new area: Ag Mechanics, through a partnership with CNH Industrial and their Top Tech certification program for technicians.

The Kansas Department of Commerce awarded a \$1.85 million 1:1 matching grant of federal stimulus funds from the American Rescue Plan Act (ARPA) to construct the learning center, and the match must be made up of cash and in-kind donations and pledges from community partners.

Scholarships



FIVE YEAR AWARD HISTORY



Where are our awardees from?

- BARTON COUNTY**
- SERVICE AREA**
Ellsworth, Pawnee, Rice, Russell, Rush, and Stafford Counties
- STATE OF KANSAS**
- OUT OF STATE**
- INTERNATIONAL**

Setting up a scholarship fund is a meaningful way to give back to your community or to honor a loved one, friend, or group.

For information about how to create an endowed or annually funded scholarship for Barton students, contact Lindsey Bogner at (620) 786-1141 or bognerl@bartonccc.edu

New Funds

Shirer Stage and Song Scholarship Endowment

While being recognized with the Old Bill Honorarium at the 43rd Annual Big Benefit Auction, Brad and Sarah Shirer created the Shirer Stage and Song Scholarship. The endowment is mixed use and provides scholarships and can be used for program enhancements. It provides scholarships to Fine Arts majors that have financial need and are residents of Barton County or Barton's seven-county service area. It can also be used for buying music for performance or education in the vocal and instrumental departments and the community choir and funding musicals in the theatre department.

Norman and Karen Keller Memorial Scholarship Endowment

After their mother's passing in 2020, brothers Kevin and Jeff Keller and sister Kim Meeds, wanted to memorialize her and their father, who passed in 1999. The care that Karen received by Barton graduates of the CNA program during the end of her life was appreciated by her family and this was a way that they could recognize the program and the students. They created the Norman and Karen Keller Memorial Scholarship to assist students in Agriculture, Business, Adult Healthcare, and Nursing with a 2.5+ GPA who resided in Barton's seven-county service area.

New Funds

The Williams Scholarship Annual Fund and Endowment (2)

The Williams Companies, Inc., one of the nation's largest natural gas processing and transportation companies, is a strong partner of Barton's Natural Gas Transmission and Distribution program. Through their Community Giving programs, they have created both an annual fund and endowed scholarship for traditional students of the program with a GPA of 2.5 or higher, with a minority (of gender or ethnicity) preference. The endowed scholarship will provide scholarships through the natural gas programs in perpetuity.

Student Emergency Assistance Endowment

As part of the BEST (Barton Enhancement and Scholarship Team) campaign in 2018, Barton employees raised funds to create an emergency fund for students. Barton students experiencing non-school related hardships, such as medical or transportation issues, can apply for funds to assist; the applications are reviewed by a team in Student Services and recommended for payment to the Foundation, after which funds are distributed in the student's name to the appropriate vendor. This year, the Foundation has matched a community donor to build an endowment to provide a permanent source of funds for this critical resource.

Ways to Give



Create a Named Endowment Fund

- Scholarship
- Enhancement
- Mixed Use

Create a Named Annual Scholarship Fund

Give an Outright Gift

- Donation
- Pledge
- Real Property

Make a Planned (Deferred) Gift

- Bequest
- Beneficiary Designation
- Life Insurance
- Real Estate and Retained Life Estates
- Charitable Lead or Remainder Trusts

In an effort to make it easier to connect with the Foundation, we are standardizing language and messaging across the board.

For information about how to support Barton, contact Lindsey Bogner at (620) 786-1141 or bognerl@bartonccc.edu

A person in a white shirt is sitting at a wooden desk, using a white calculator. To the left is a laptop. In front of them are several documents, one of which has a pie chart. The scene is dimly lit with a blue tint.

FOUNDATION UPDATES

Annual Audit

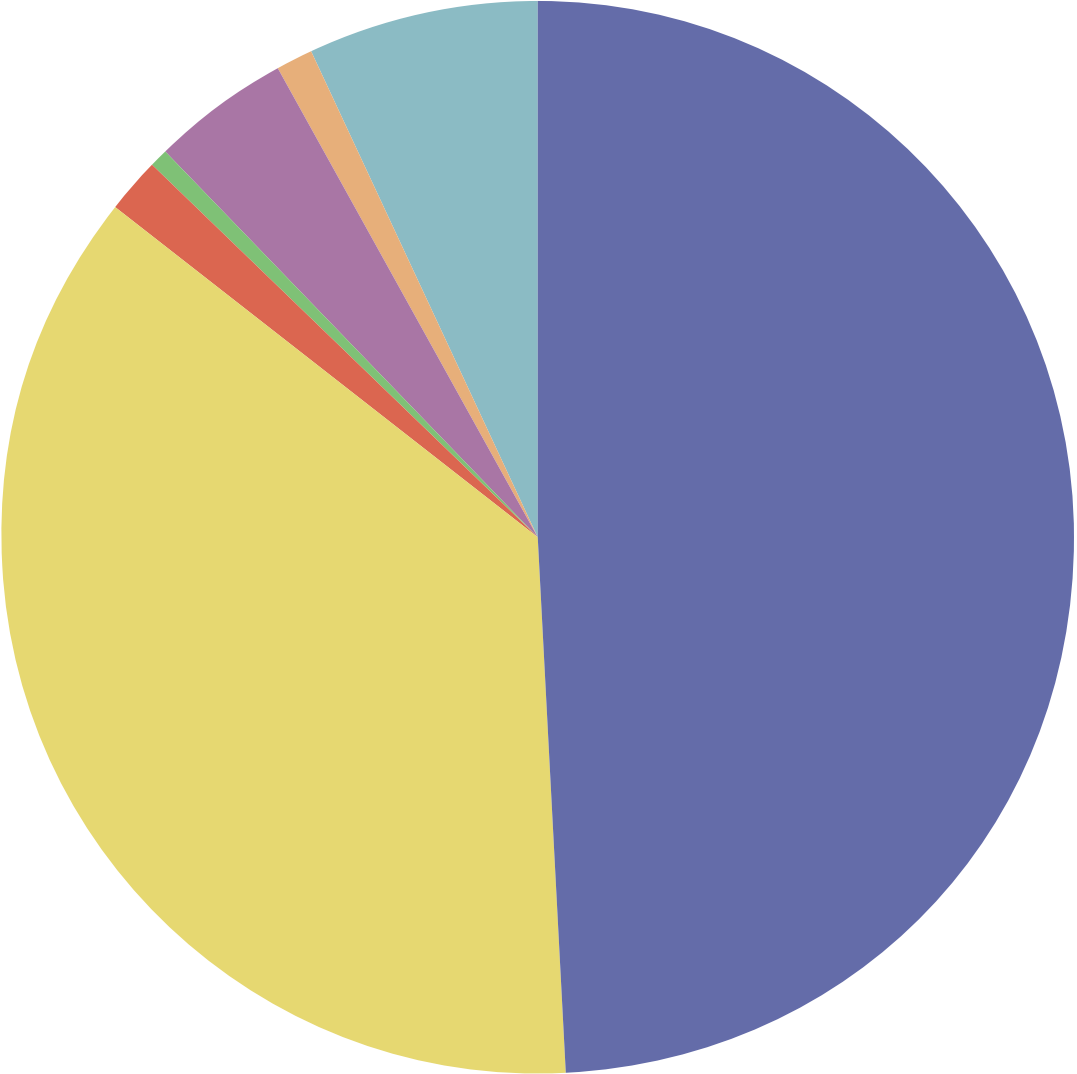
Audit Findings

🐾 The Foundation received an unqualified opinion with zero findings this year from AdamsBrown, LLC

🐾 Highest opinion obtainable

🐾 Items and information of note follow

Financials



ASSETS = \$11,580,407 (+14.6% from FY22)

- Restricted Investments, 49.3%
- Current Investments, 36.3%
- Cash, 1.7%
- Pledges Receivable, 0.5%
- Beneficial Interest in Trusts/Assets, 4.3%
- Cohen Center Book Collection, 1.1%
- Permanent Art Collection, 6.7%

Financials

REVENUE

🐾 Public Support ↑134%* (from FY22)

🐾 Revenues & Gains ↑158%

EXPENSES

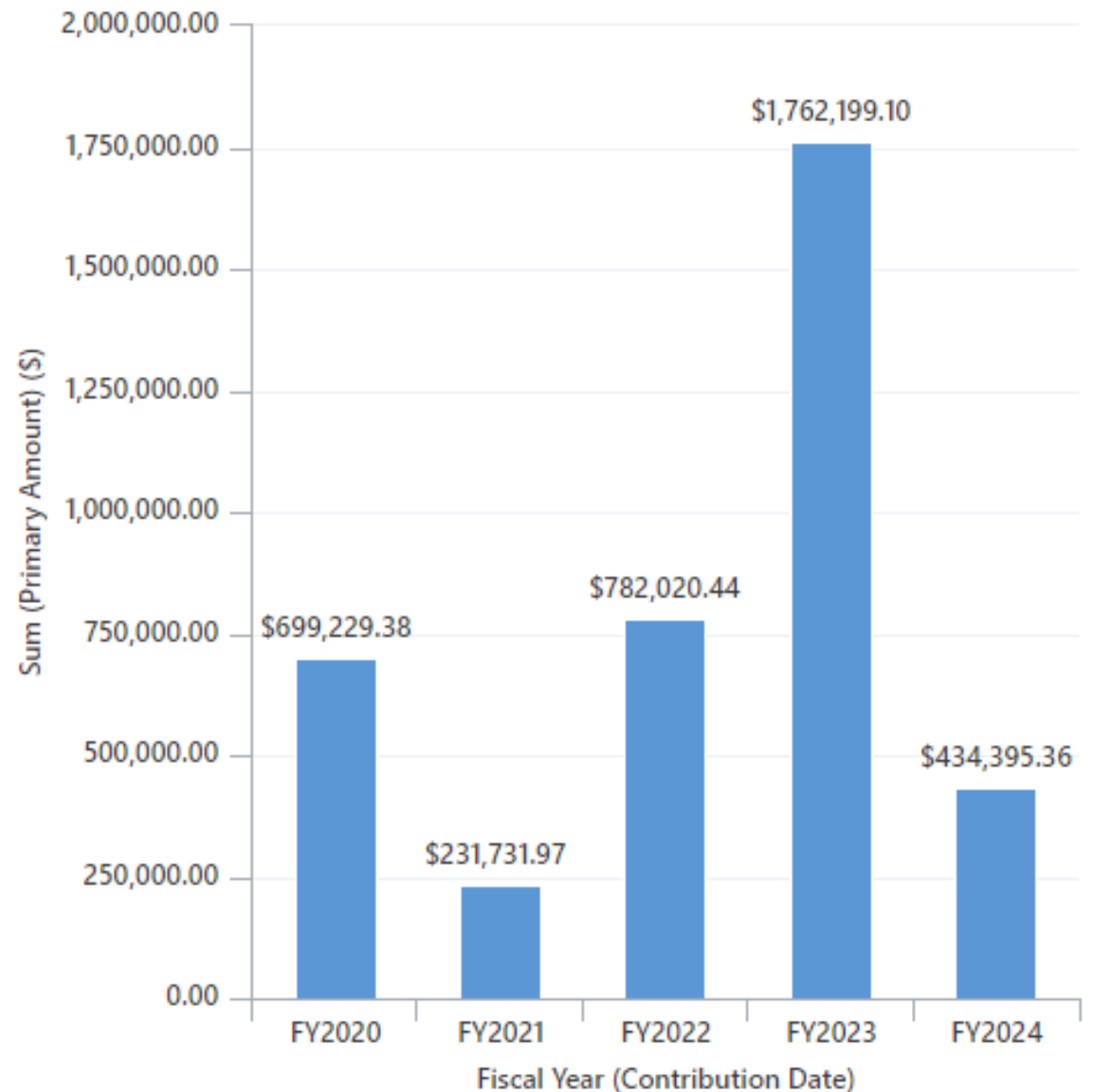
🐾 Grants and Scholarships ↑124%*

🐾 Management Costs ↑6%*

🐾 Fundraising Costs ↑30%*

*Adjusted to remove in-kind support from the College. Audit financials include increase of salaries/wages and facilities, paid by College. Non-adjusted changes: ↑124%, ↑106%, ↑12% and ↑14%, respectively

Total Giving by Year





THANK YOU!

 *Questions?*